

Artingstall Auctioneers 1874



DR. RAFF'S CANADIAN ART 2 & OTHER ESTATES

Sunday - May 23, 2021

DR. RAFF'S CANADIAN ART 2 & OTHER ESTATES



8000: DR. RAFF & HIS PRIVATE COLLECTIONS IN CANADA IN 1985

USD 10,000 - 100,000

Dr. Moses J. Raff M.D., a prominent art collector from Canada, and the owner of a gallery museum in Toronto. His collection consists of paintings by European, Canadian, and American artists. The majority of the paintings are from the 1930s – 1950s, and a substantial number are from the 1800s through the early 1900s. Dr. Moss J. Raff M.D. passed away in 1992.



8001: BRONZE SCULPTURE, "CUPID'S BAND"

USD 3,500 - 5,000

A bronze sculpture group (a table piece) of three cupids with drum and horn; with dark brown patination. Circa 1830. With gilt-bronze bandwork and foliate chamfered plinth base. Unsigned.H: 15 in. L: 16 in.



8002: BRONZE FIGURAL GROUP, "BERGERS D'ARCADIE"

USD 5,000 - 8,000

After a model by Eugène-Antoine Aizelin (French, 1821 - 1902). Titled "Bergers d'Arcadie (Shepherds of Arcadia)". Circa 1867, a bronze sculpture with light brown patination with polished accenting. Modeled as a maiden and a shepherd mourning at a tomb. She is in a flowing robes with head downcast, and he is wearing a woven shepherd's hat with crook in his right hand, with its tip resting on a papyrus bearing an inscription in Ancient Greek. Signed E. AIZELIN with foundry mark.H: 25 in. L: 12 in.



8003: PAIR OF FRENCH BRONZE PUTTI, AFTER EMILE PINEDO

USD 1,000 - 1,500

Circa 1900. Each standing on one foot and holding a pair of painted fruit over shoulders, also set on ivory colored marble bases.H: 15 1/2 in.



8004: PAIR OF 19TH CENTURY BRONZE ANDIRONS

USD 2,000 - 3,000

Each comprising a dark patinated putto with dagger, fighting serpent atop guilloché on patera brackets.H: 20 in. L: 17 in.



8005: SEVRES PORCELAIN & ORMOLU MOUNTED VASE

USD 1,000 - 1,200

The tapering vase with hand-painted medallion on bleu celeste ground with gilt accenting, mounted with term handles continuing to grotesque and scroll base.H: 15 in.



8006: PERSIAN SILVER FOUR-PIECE TEA & COFFEE SERVICE

USD 1,500 - 2,000

With tray. Each covered baluster vessel incised overall with intricate arabesque medallions, bone handles, round tray; with hallmarks.

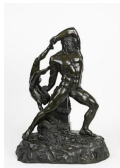
DR. RAFF'S CANADIAN ART 2 & OTHER ESTATES



8007: SILK AND WOOL QUM RUG

USD 2,500 - 3,000

The rose field centering an olive serrated panel filled with zoomorphic motifs within indigo and olive floral borders, including Kufic signature panel; fine weave.W: 3 ft. 6 in. L: 5 ft. 6 in.



8008: PATINATED BRONZE FIGURE OF HERCULES & LICHAS

USD 2,000 - 3,000

After Jean Jacques Pradier (French, 1792-1852).Signed to base Pradier.H: 24 in. (61cm)



8009: FRAMED OIL ON CANVAS OF A BARN SCENE

USD 500 - 1,000

Framed, an oil painting that depicts the inside of a barn with roosters, birds and a duck eating. Not signed.H: 11 1/4 in. L: 14 1/4 in.



8010: FRAMED OIL ON CANVAS PAINTING OF DUTCH CITY

USD 800 - 1,200

Framed, an oil painting that depicts a Dutch city scene. Signature on bottom to read R. Brosse. H: 13 1/8 in. L: 11 1/8 in.



8011: JACK BEDER, CANADIAN (1910 - 1987)

USD 800 - 1,000

Framed. A watercolor painting that depicts a winter landscape. Signature on bottom right to read J B. Jack Beder (1910 - 1987), was a well respected Canadian artist. Born in Poland in 1910 and immigrated to Montreal in 1926. He studied at the École des Beaux-Arts de Montréal from 1929-1934, during which time he won several awards and prizes for drawing and painting.His style was representational and impressionist and his main influences were Maurice Cullen and, more importantly, James Wilson Morrice, both Canadian painters. He was best known for Montreal street scenes and 1930s Montreal cafes, but also painted landscapes, still-lives, gardens and portraits/figures. He worked in oils, acrylics, gouaches, watercolors, pastels, drawings and prints (serigraphs, linoprints, monotypes and monoprints). He also produced sculpture, mostly non-objective, in wood, limestone, marble, serpentine, plaster and liquitex/ cardboard.The record sold price for this artist in auction is USD \$7,145 for "Tree Image (Sculpture #43)", which was sold in 2017.With Frame: 19 1/2 in. x 17 1/2 in.Without Frame (Painting Only): 10 in. x 8 in.



8012: DUTCH OIL PAINTING ON CANVAS OF A FAMILY SCENE

USD 1,000 - 2,000

Framed. Depicts a gathering in a dim-lit room. Signature on bottom right to read Copie Ht, dated 41. H: 15 1/4 in. L: 11 1/8 in.



8013: DUTCH OIL ON CANVAS PAINTING OF A VILLAGE SCENE

USD 500 - 800

Framed. Painted in great details of a village town scene.H: 15 in. L: 1 1/4 in.

DR. RAFF'S CANADIAN ART 2 & OTHER ESTATES



8014: FRAMED PORTRAIT OF A MAN BY DUDLEY WARD

USD 500 - 1,000

Framed, a drawing that depicts a man smoking a pipe. Signature to read Dudley Ward, dated 33.H: 23 1/2 in. L: 17 1/2 in.



8015: EDWIN SALOMON, ISRAELI (1935 - 2014)

USD 800 - 1,000

Framed. A contemporary lithograph of giraffes. Pencil signed on bottom to read Edwin Salomon. The record sold price for this artist is USD \$6,900, for his work, "The Herd", which was sold in 2010.H: 20 1/4 in. L: 12 1/2 in.



8016: JOSEPH GIUNTA, CANADIAN (1911 - 2001)

USD 1,000 - 1,200

Framed, the oil painting depicts some town people walking down on the village street. Signature on bottom right to read Giunta. Joseph Giunta had an artistic career that spanned over 70 years, he was known for both of his styles, realism and gestural abstraction. The record sold price for this artist in auction is USD \$3,219 for his works, "Hiver, Laurentides, Que", which was sold in 2007.



8017: GILTWOOD FRAMED PAINTING ON BOARD OF A DUTCH SCENE

USD 250 - 350

Giltwood framed, depicts a beautiful canal city, painted in fine details.H: 9 1/2 in. L: 13 1/2 in.



8018: FRAMED OIL ON CANVAS PAINTING OF LANDSCAPE

USD 1,000 - 1,200

With an herd of sheep. Signature to read Jort Whiltte. H: 24 1/2 in. L: 33 in.



8019: FRAMED OIL ON CANVAS PAINTING OF A SHOE MAKER

USD 800 - 1,000

Framed. Painted in fine details, of a shoe maker making shoes. Signature to read H. Tschelon. H: 20 1/4 in. L: 24 1/4 in.



8020: GILTWOOD FRAMED OIL PAINTING ON CANVAS OF A FARM

USD 1,200 - 1,500

Giltwood framed. Intricately painted with a group of animals and a countryside house. Signature to read H. Eust. H: 20 in. L: 30 1/4 in.

DR. RAFF'S CANADIAN ART 2 & OTHER ESTATES



8021: FRAMED OIL ON BOARD PAINTING BY DUPOND

USD 250 - 350

Framed. An oil on board painting that depicts two men and a pineapple. Signature on lower right to read M. Dupond, dated 45. H: 19 in. L: 25 in.



8022: WILLIAM SHOWELL, CANADIAN (1903 - 1984)

USD 500 - 800

Framed. Titled "Young Girl". A pastel on canvas painting of a young girl contemplating. Signature to read William Showell. William Showell (1903 - 1984) was a Canadian painter, known for landscape, portrait and nude paintings. H: 24 in. L: 20 in.



8023: FRAMED OIL PAINTING ON CANVAS OF FISHERMEN

USD 2,000 - 3,000

Framed, an oil painting that depicts fishermen spreading out a large fishing net on a beach. Signature on bottom left to read Shlossberg. H: 24 in. L: 36 in.



8024: JAMES EDWARD GRACE, BRITISH (1851-1908)

USD 800 - 1,000

Depicts a tranquil lake, signature on bottom left to read J. E. Grace. James Edward Grace (1851 - 1908), he was a 19th century British painter, known for landscape, and cattle in landscape paintings. The record sold price in auction for his artwork is USD \$2,050, which was sold at Sotheby's Olympia in 2006. H: 10 in. L: 13 in.



8025: FERNELEY RAMUS (1868 - 1937)

USD 400 - 500

Framed, a painting that depicts a village scene. Signature on bottom right to read F. Ramus, 1915. Ferneley Ramus (1868 - 1937), an artist who was a prolific painter in both oils and watercolors. H: 9 in. L: 16 1/4 in.



8026: FRAMED DRAWING OF A SEATED MAN

USD 300 - 500

Framed. A drawing that depicts an older gentleman in a blue suit, in a sitting position. Signature on bottom which is illegible. H: 18 in. L: 12 in.



8027: FRAMED DRAWING OF A FARMER AND A HOUSE

USD 100 - 200

Framed. A drawing of a farmer and a house. Signed on bottom and signature to read C. McBean. H: 10 in. L: 13 in.

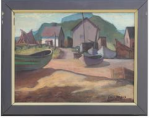


8028: OIL ON CANVAS OF A SNOWY LANDSCAPE BY GABRIS B.

USD 500 - 700

A beautiful oil painting that depicts a winter landscape of a streaming river amongst snow. Signature to read Gabris B. H: 24 1/4 in. L: 36 in.

DR. RAFF'S CANADIAN ART 2 & OTHER ESTATES



8029: FRAMED OIL ON CANVAS PAINTING, OF A LANDSCAPE

USD 250 - 350

Framed, an oil painting that depicts some boats on a beach, with houses at the background. Signature to read Geo S Masse. H: 18 in. H: 24 in.



8030: FRAMED OIL ON CANVAS PAINTING OF A DUTCH SCENE

USD 500 - 1,000

Framed, an oil painting that depicts a group of people having a fight in a pub. Signature on bottom to read Dort.H: 11 in. L: 15 1/4 in.



8031: STANLEY LEWIS, CANADIAN (1930 - 2006)

USD 500 - 700

Framed, a lithograph, titled "Metamorphosis IV," pencil signed LEWIS - 65, numbered 31/50. Stanley Lewis was a Canadian Postwar & Contemporary artist who was born in 1930. Their work was featured in several exhibitions at key galleries and museums, including the National Academy of Design and the Betty Cuninghams Gallery.



8032: STANLEY LEWIS, CANADIAN (1930 - 2006)

USD 500 - 700

Framed, lithograph, titled "Metamorphosis I," pencil signed LEWIS - 65, numbered 48/50. Stanley Lewis was a Canadian Postwar & Contemporary artist who was born in 1930. Their work was featured in several exhibitions at key galleries and museums, including the National Academy of Design and the Betty Cuninghams Gallery.



8033: STANLEY LEWIS, CANADIAN (1930 - 2006)

USD 500 - 700

Framed. Lithograph, titled "The Hermit," pencil signed LEWIS - 62, numbered 9/25. Stanley Lewis was a Canadian Postwar & Contemporary artist who was born in 1930. Their work was featured in several exhibitions at key galleries and museums, including the National Academy of Design and the Betty Cuninghams Gallery.



8034: STANLEY LEWIS, CANADIAN (1930 - 2006)

USD 500 - 700

Framed, lithograph titled "Woman with Hat" and numbered 10/50. Pencil signed LEWIS - 61 on the bottom right. Stanley Lewis (1930 - 2006) was known for sculpture and printmaking. He was regarded by many as a national treasure in the contemporary art world. During his 56 year international career he created "poetry in stone," and his prolific body of work is an enormous contribution to art and Canadian culture. As a teacher and mentor, his generosity, energetic personality and wealth of knowledge inspired several generations of artists. His work was featured in several exhibitions at key galleries and museums, including the National Academy of Design and the Betty Cuninghams Gallery. H: 20 1/2 in. L: 12 1/4 in.



8035: FRAMED PAINTING OF POTTED BLOSSOMING FLOWERS

USD 200 - 300

Framed, a painting that depicts beautiful, blossoming white flowers in a vase. Not signed.

DR. RAFF'S CANADIAN ART 2 & OTHER ESTATES



8036: WATERCOLOR PAINTING OF A SHORE SCENE

USD 500 - 800

Framed, a watercolor painting that depicts roaring ocean waves crashing on the shore. Signature on bottom left to read W.S.T. Smith. H: 12 in. L: 18 in.



8037: DANIEL SHERRIN, BRITISH (1868-1940)

USD 5,000 - 7,000

Depicts a couple working on a field. Signature on bottom right to read D. Sherrin. Daniel Sherrin (1868 - 1940) was an English painter who was commissioned by King George V to paint Sandringham and this painting is still hanging in Buckingham Palace. His work is highly detailed, describing objects such as ships and cattle accurately while maintaining a sense of light and atmosphere. Sherrin's work can be found in mostly British museum collections, including the Bury Art Museum and the Williamson Art Gallery & Museum in Cloughton. The record sold price for this artist in auction is USD \$16,159 for "2 Works: Untitled Landscapes", what was sold at Pundole's in 2012. Exhibited : The Royal Academy H: 16 in. L: 24 in.



8038: GORDON GEZA MARICH, CANADIAN (1913 - 1985)

USD 500 - 800

A beautiful oil on canvas painting that depicts a winter landscape. Signed on bottom right to read G. Marich. Gordon Marich (1913 - 1975) was known for landscape, portrait, city scene and flower painting. Born in Hungary, Gordon Geza Marich studied art in Budapest and emigrated to Canada in 1957. He lived in Nova Scotia, Quebec and Hungary. His works are displayed in the National Museum of Budapest, in galleries in Toronto, Ottawa and Montreal and in private collections. Known for his landscape, portrait, city and flower paintings, his work evolved towards abstraction, including extensive use of a palette knife (seen in this fall landscape painting). H: 23 in. L: 31 in.



8039: WILLIAM WATT MILNE, SCOTTISH (1865 - 1949)

USD 1,200 - 1,800

Framed, depicts some maids working at a seascape. Signed W. W. Milne. William Watt Milne (1865-1949) was a renowned Scottish artist who was popular for his artwork on landscape and rural genre painting. His work can be found in major museums internationally as well as locally in the Norris Museum, St Ives. His paintings have been successfully offered in leading auction houses, including a sale at Sotheby's London for a record price of USD \$14,031 in 2000. H: 11 1/2 in. L: 15 1/2 in.



8040: STILL LIFE OIL ON CANVAS PAINTING BY CHER HOEVEN

USD 300 - 500

An oil on canvas painting that depicts a bouquet of blossoming flowers in a glass, next to a blue and white porcelain cup. Signature on bottom right to read Cher Hoeven. H: 23 3/4 in. L: 31 1/2 in.



8041: GORDON GEZA MARICH, CANADIAN (1913 - 1985)

USD 500 - 700

An oil painting that depicts a house amongst a forest. Signature to read G. Marich. Gordon Marich (1913 - 1975) was known for landscape, portrait, city scene and flower painting. Born in Hungary, Gordon Geza Marich studied art in Budapest and emigrated to Canada in 1957. He lived in Nova Scotia, Quebec and Hungary. His works are displayed in the National Museum of Budapest, in galleries in Toronto, Ottawa and Montreal and in private collections. Known for his landscape, portrait, city and flower paintings, his work evolved towards abstraction, including extensive use of a palette knife (seen in this fall landscape painting). H: 24 in. L: 30 in.

DR. RAFF'S CANADIAN ART 2 & OTHER ESTATES



8042: PIERRE LAWTON, CANADIAN (1933 -)

USD 500 - 700

Framed, ink on paper drawing that depicts a city street scene. Signature on bottom left to read P. Lawton 20. Pierre Lawton (1933 -), a French Canadian artist. H: 17 in. L: 13 in.



8043: FRAMED LANDSCAPE PAINTING

USD 1,200 - 1,500

Framed, depicts beautiful landscape with some children playing on a frozen lake. Signed on bottom left which is illegible. H: 11 in. L: 13 in.



8044: MAURICE GALBRAITH CULLEN, CANADIAN (1866 - 1934)

USD 500 - 700

A beautiful print that depicts a winter landscape. Signature on bottom right to read M Cullen 25. Maurice Galbraith Cullen was a prominent painter and influential educator. His mediums were oil, watercolor, pen and ink, pastel and mixed mediums. His subjects are landscape, coastal scenes, urban scenes, genre, portraits and war (during World War I). His most famous subject is Quebec in winter, its urban streets, its rivers, its countryside. The record sold price for this artist in auction is USD \$362,780 for his work, "Commandant's Point, Lac Tremblant", which was sold in 2008. H: 18 1/2 in. L: 24 1/2 in.



8045: EDWARD JOHN (E.J.) HUGHES, CANADIAN (1913 - 2007)

USD 400 - 600

A beautiful print that depicts a tranquil lake. Signature on bottom left to read E.J. Hughes, dated 1955. Edward John Hughes (aka: E.J. Hughes) was a painter, printmaker, muralist and commercial artist who was born in North Vancouver, British Columbia, Canada. The record sold price for this artist in auction is USD \$1,557,778 for his work, "Fishboats, Rivers Inlet", which was sold at Heffel Vancouver in 2019. H: 24 in. L: 20 in.



8046: ABSTRACT PAINTING ON PAPER BY MARITHE RAY

USD 300 - 350

An abstract painting that depicts a winter landscape scene. Signature on bottom right to read Marithe Ray 76. H: 18 in. L: 14 in.



8047: WILLIAM SHOWELL, CANADIAN (1903 - 1984)

USD 500 - 700

An oil painting that depicts a lady in a pink dress. Signature on bottom right to read William Showell 64. William Showell (1903 - 1984) was a Canadian painter, known for landscape, portrait and nude paintings. H: 18 in. L: 13 in.



8048: WILLIAM SHOWELL, CANADIAN (1903 - 1984)

USD 500 - 700

A drawing that depicts a lady wearing a dress and a headpiece contemplating. Signature on bottom left to read Showell. William Showell (1903 - 1984) was a Canadian painter, known for landscape, portrait and nude paintings. H: 18 in. L: 14 in.

DR. RAFF'S CANADIAN ART 2 & OTHER ESTATES



8049: DORUS ARTS, DUTCH (1901 - 1961)

USD 800 - 1,000

A beautiful oil painting that depicts a fall forest. Signature on bottom right to read Dorus Arts. Dorus Arts was born in 1901. He took lessons at the studios of Gorter, Jan Toorop, Van Vucht Tijssen, and Jurres. With these masters he perfected his talent for drawing, etching and painting. The record sold price for this artist in auction is USD \$1,651 for his work, "Waterlillies in a Forest Pond", which was sold at Christie's Amsterdam in 2004. H: 15 1/2 in. L: 20 3/4 in.



8050: FRAMED WATERCOLOR PAINTING OF A CANAL CITY

USD 500 - 800

Framed. A magnificent watercolor painting of canal in Belgium. Signed on bottom right which is illegible. H: 11 1/2 in. L: 9 1/2 in.



8051: LEO (LIOR) ROTH, ISRAELI (1914 - 2002)

USD 2,000 - 3,000

Framed, a watercolor painting. Signature on bottom. Leo (Lior) Roth (1914 - 2002) was an Israeli painter who was born in 1914. Roth's work was influenced by Cubism and bears much in common with the work of compatriot painter Naftali Bezem. His colorful canvases contain biblical imagery and references to early Israeli pioneer culture. The record sold price in auction is USD \$6,900 for his work "The Shear", which was sold in 2015. H: 9 1/4 in. L: 5 7/8 in.



8052: STANLEY LEWIS, CANADIAN (1930 - 2006)

USD 500 - 700

Framed. Lithograph, titled "Landscape with Moon". Pencil signed LEWIS - 61, numbered 17/30. Stanley Lewis was a Canadian Postwar & Contemporary artist who was born in 1930. Their work was featured in several exhibitions at key galleries and museums, including the National Academy of Design and the Betty Cuningham Gallery.



8053: STANLEY LEWIS, CANADIAN (1930 - 2006)

USD 800 - 1,200

Framed, a drawing of an old man's portrait. Signed on top right to read LEWIS - 53. Stanley Lewis (1930 - 2006) was known for sculpture and printmaking. He was regarded by many as a national treasure in the contemporary art world. During his 56 year international career he created "poetry in stone," and his prolific body of work is an enormous contribution to art and Canadian culture. As a teacher and mentor, his generosity, energetic personality and wealth of knowledge inspired several generations of artists. His work was featured in several exhibitions at key galleries and museums, including the National Academy of Design and the Betty Cuningham Gallery. H: 15 1/4 in. L: 21 1/4 in.



8054: STANLEY LEWIS, CANADIAN (1930 - 2006)

USD 500 - 700

Framed. Lithograph, titled "Still Life (Israel)". Pencil signed LEWIS - 64, numbered 7/45. Stanley Lewis was a Canadian Postwar & Contemporary artist who was born in 1930. Their work was featured in several exhibitions at key galleries and museums, including the National Academy of Design and the Betty Cuningham Gallery.



8055: BEAUTIFUL GILTWOOD FRAME PAINTING BY K. GOULDING

USD 2,000 - 2,500

Giltwood framed, depicts maids and horses crossing a shallow pond. Signature to read K. Goulding. H: 8 in. x W: 10 in.

DR. RAFF'S CANADIAN ART 2 & OTHER ESTATES



8056: OIL PAINTING OF NYMPHS IN GARDEN

USD 1,000 - 2,000

Framed. Depicts nymphs having fun in a garden.



8057: HERMANUS WILLEM KOEKOEK, DUTCH (1867-1929)

USD 10,000 - 15,000

Beautifully framed. A painting that depicts a man walking alone in the mountain. Signed on bottom right. Hermanus Willem Koekkoek was a Dutch 19th Century painter who was born in 1867. He was known for his military scenes. He was part of the famous family of painters, son of Willem Koekkoek and brother of Marinus Adrianus Koekkoek. He was trained by his father, and lived and worked in Amsterdam, and from 1887 to 1891 and again from 1901 to 1920 in London. The record price for this artist at auction is USD \$48,238 for "Hussars," which was sold at Sotheby's Amsterdam in 2006. H: 8 1/2 in. x W: 13 in.



8058: ALFRED PAUL EMILE ETIENNE DUMONT (1828 - 1894)

USD 3,000 - 4,000

Framed. An oil painting that depicts people at a park. Signed on bottom left. Alfred Paul Emile Etienne Dumont was a Swiss 19th Century painter who was born in 1828. The record price for this artist in auction is USD \$7,552 for "Sortie d'Église en Valais", which was sold in 2019. H: 15 in. x W: 18 1/8 in.



8059: FRAMED PAINTING OF A HORSE HEAD BY MR

USD 200 - 400

Framed, a watercolor painting that depicts a horse head. Signature to read MR. H: 6 1/8 in. L: 4 in.



8060: JOHN HUMPHRIES, CANADIAN (1882 - 1958)

USD 300 - 500

A beautiful watercolor painting on paper of a small town nearby a lake. Signature on bottom to read J Humphries. Without Frame: H: 6 1/2 in. L: 12 3/4 in.



8061: FRANCIS GARAT, FRENCH (1870 - UNKNOWN)

USD 1,000 - 1,200

Framed. A watercolor painting on paper of an European city. Signature to bottom left to read Francis Garat. Francis Garat was a French artist who was known for paintings. The record sold price for this artist is USD \$8,879 for the work, "Le Pont Neuf; and Place St. Michel", which was sold at Christie's South Kensington in 2000. H: 8 1/2 in. L: 12 1/2 in.



8062: 19TH CENTURY OIL ON CANVAS PAINTING

USD 200 - 300

Giltwood framed, depicts a woman in front of fences. H: 18 1/8 in. L: 13 in.

DR. RAFF'S CANADIAN ART 2 & OTHER ESTATES



8063: ANTHONY DE FRANGE, AMERICAN (1923 - 1983)

USD 800 - 1,200

Framed, of a bouquet of blossoming yellow roses. Signed on bottom right to read De Frange. Anthony de Frange was known for portrait. The record sold price for this artist in auction is USD \$2,250 which was sold in 2018. Painting Only: L: 17 1/2 in. H: 23 1/2 in. With Frame: L: 23 in. H: 29 in.



8064: WATERCOLOR PAINTING OF A NUDE LADY BY J. BOCKHOUT

USD 200 - 300

Signature on bottom left to read J. Bockhout 66. H: 5 in. L: 7 1/8 in.



8065: SET OF TWO PAINTINGS BY GEO E. DAVIES

USD 800 - 1,000

Both paintings are framed and depict a village scene. Signature on bottom left of each painting to read Geo. E. Davies. H: 4 1/4 in. x W: 5 7/8 in.



8066: LIONEL FIELDING DOWNES, CANADIAN (1900 - 1972)

USD 600 - 800

Framed. A painting that depicts a wooden cabin in a fall forest. Signature on bottom right to read L. Fielding Downes. Lionel Fielding Downes was a Canadian artist, known for paintings. The record sold price for this artist is USD \$1,025 for his work, "Rue Richelieu", which was sold in 2009. H: 18 in. L: 24 in.



8067: FRAMED LANDSCAPE PAINTING OF A FOREST

USD 500 - 800

Framed. Depicts a flowing river amongst a tranquil forest. Not signed. H: 20 in. x L: 30 in.



8068: 20TH CENTURY OIL PAINTING OF A FARMER

USD 400 - 800

Framed, depicts a farmer feeding chicken in his barn. Not signed. H: 24 in. x L: 20 in.



8069: BRITISH OIL PAINTING OF A FOX HUNTING SCENE

USD 800 - 1,000

Depicts a traditional English fox hunting scene. With several British hunters riding horses and hunting foxes with their dogs. Signature on bottom right which is illegible. H: 20 in. L: 24 1/4 in.

DR. RAFF'S CANADIAN ART 2 & OTHER ESTATES



8070: OIL ON CANVAS PAINTING OF A SEA COAST

USD 800 - 1,000

Depicts many ships and boats near the sailing nearby the coast. Signature on the bottom to read C. Leflere. H: 20 in. L: 24 in



8071: OIL ON CANVAS PAINTING OF AN OLD MAN PORTRAIT

USD 2,000 - 3,000

The style of this painting resembles Margaret Campbell Macpherson (1860 - 1931). She was a British painter who was known for Impressionist and realist figure, portrait and landscape painting.H: 18 in. x L: 15 1/4 in.



8072: PAINTING ON CANVAS OF A SNOWY PORT BY CHER HOEVEN

USD 300 - 500

Depicts a town which is covered in heavy snow. Signature on bottom left to read Cher Hoeven. H: 19 in. L: 23 in.



8073: OIL PAINTING ON CANVAS OF A VILLAGE BY CHER HOEVEN

USD 500 - 700

Depicts a quaint rural village at the foot of a snowy mountain. Signature on bottom left to read Cher Hoeven. H: 20 in. x L: 24 in.



8074: OIL ON CANVAS PAINTING OF A COUPLE BY H. HIENSCH

USD 800 - 1,200

Depicts a couple overlooking a river on a bridge. Signature to read H. Hiensch.H: 19 1/2 in. L: 23 1/2 in.



8075: BRIAN HALSEY, AMERICAN (1942 -)

USD 500 - 700

Framed, titled "Tetrad." Pencil signed on bottom to read Halsey and numbered 84/90.Drawing Only: L: 14 in. H: 17 1/2 in.With Frame: L: 22 in. H: 25 1/2 in.



8076: FRAMED DUTCH PAINTING OF A HARBOR SCENE

USD 700 - 900

Framed, depicts boats and ships in a harbor. Not signed.H: 11 in. x L: 14 in.



8077: 18TH C. PAINTING OF A NOBLE FAMILY GATHERING

USD 500 - 1,000

Depicts a family embracing each other in a grand living room.H: 14 1/4 in. x L: 22 in.

DR. RAFF'S CANADIAN ART 2 & OTHER ESTATES



8078: PIERRE LAWTON, CANADIAN (1933 -)

USD 200 - 300

Framed, a watercolor painting of a boat. Signed on bottom right to read P. Lawton. Pierre Lawton (1933 -), is a French Canadian artist. Painting Only: L: 9 1/4 in. H: 7 1/4 in. With Frame: L: 11 in. H: 8 3/4 in.



8079: A PORTRAIT DRAWING OF A LADY

USD 500 - 700

A beautiful drawing that depicts a lady dressing in a dress with a shawl. Not signed. H: 20 in. L: 15 3/4 in.



8080: FRAMED PAINTING OF A WINDMILL BY W. PERCY

USD 1,000 - 3,000

Framed, depicts a windmill up on a mountain. Signature on bottom to read W. Percy. H: 8 in. L: 10 in.



8081: FRAMED PAINTING OF A WATERFALL BY T. ALBERT

USD 300 - 700

Depicts a majestic waterfall flowing down to a river. Signature on bottom right to read T. Albert. H: 18 1/4 in. x W: 15 1/4 in..



8082: JOSEPH GIUNTA, CANADIAN (1911 - 2001)

USD 1,000 - 1,200

Framed, depicts a landscape with two people camping next to a flowing river, with a tent. Signature on bottom right to read Giunta. Joseph Giunta had an artistic career that spanned over 70 years, he was known for both of his styles, realism and gestural abstraction. The record sold price for this artist in auction is USD \$3,219 for his works, "Hiver, Laurentides, Que", which was sold in 2007. H: 18 in. x L: 24 in.



8083: 20TH CENTURY OIL PAINTING OF AN OLD MAN

USD 200 - 300

Depicting old man smoking with a pipe. Signature is illegible on top right. H: 26 in. L: 20 1/4 in.



8084: SAMUEL EDMUND OPPENHEIM (AMERICAN, 1901-1992)

USD 800 - 1,000

Framed, depicts a girl dressing in white shirt and smiling. Signature to read Oppenheim 52 on top right. Samuel Oppenheim, an art educator at the Art Students League of New York, was active in the Hudson River Valley and predominantly worked on paintings and illustrations. H: 18 in. L: 13 in.

DR. RAFF'S CANADIAN ART 2 & OTHER ESTATES



8085: WALTER CANNON, BRITISH (1887-1913)

USD 1,200 - 1,800

Giltwood framed. Depicts ships sailing in roaring waves. Signature to bottom left to read W. Cannon. Walter Cannon (1887 - 1913) was a British painter. One of his works, "Pair: Sail and Steam Offshore", was sold in 2013.H: 10 in. x L: 18 in.



8086: ABSTRACT ACRYLIC PAINTING BY DAVID ASHOURI

USD 500 - 800

Titled "Dream". Signed on bottom left to read Ashouri.H: 40 in. L: 30 in.



8087: OIL ON CANVAS PAINTING BY DAVID ASHOURI

USD 500 - 800

Depicts two connecting hearts growing amongst a black thorns against a vignette, cobalt blue background. Artist's signature to the bottom left. H: 30 x L: 24 in.



8088: PERCY FRANKLIN WOODCOCK, CANADIAN (1855 - 1936)

USD 2,000 - 3,000

Giltwood framed, depicts a snowy, winter landscape. Signed on the lower left to read Percy Woodcock.He was a prominent late 19th century and early 20th century Canadian painter and educator. His works were featured in important exhibitions in Canada, England, France and the US. He was a member of the Royal Canadian Academy of Arts and the Ontario Society of Artists. He is also listed and discussed in many of the comprehensive Canadian art history reference books and his works are in the collections of several museums including the National Gallery of Canada.H: 8 in. L: 11 1/2 in.



8089: THEODORE NICOLAI LUKITS, AMERICAN (1897 - 1992)

USD 1,200 - 1,500

Depicts a beautiful goddess with two deer. Signed on bottom left to read T.N. Lukits.The record sold price for this artist in auction is USD \$28,125 for "Idle Hour," which was sold in 2009.L: 24 in. H: 30 in.



8090: HERMAN JOHANNES VAN DER WEELE, DUTCH (1852 - 1930)

USD 5,000 - 7,000

Giltwood framed, depicts a shepherd and a flock of sheep. Signature to read HJ vd Weele. Herman Johannes van der Weele (1852 - 1930) was a Dutch painter. He painted flocks of sheep, sheep barns, stable interiors, meadows with cows, sand drifts, foresters with horses, farmers plowing with an ox team, milkmaids tending cows, street scenes with coaches, and sand quarries. The record sold price for this artist in auction is USD \$11,875 for "Landscape with Cows", which was sold at Christie's New York in 2015.H: 16 1/2 in. L: 26 in.



8091: FRAMED OIL ON CANVAS LANDSCAPE PAINTING

USD 800 - 1,000

Giltwood frame. Signed on bottom right to read Benson.Painting Only: L: 11 1/2 in. H: 15 1/2 in.With Frame: L: 22 in. H: 27 in.

DR. RAFF'S CANADIAN ART 2 & OTHER ESTATES



8092: OIL PAINTING OF BLOOMING FLOWERS

USD 300 - 500

Framed, a beautiful oil on canvas painting that Signed on lower right to read Speciale. Painting Only: L: 21 1/2 in. H: 27 3/4 in. With Frame: L: 22 3/4 in. H: 28 3/4 in.



8093: FRANCOIS (CARBUCCIA) CARBU, FRENCH (1896 - UNKOWN)

USD 600 - 800

Oil on canvas painting depicts a beautiful seashore scene with waves crashing on the beach under moonlight. Signature to on bottom left to read Carbu. Francois (Carbuccia) Carbu, was a French artist who was known for painting of seacapes and boats. H: 21 in. L: 39 in.



8094: GEORGE WASHINGTON BROWNLOW, BRITISH (1835-1876)

USD 2,000 - 3,000

Framed, an oil painting that depicts people hanging out on a cliff which overlooks the ocean. George Washington Brownlow (1835 - 18786) was a British painter. The record sold price for this artist is USD \$15,422 for his work, "Come Awa", which was sold at James Adam & Sons in 2012. H: 12 in. x W: 19 in.



8095: PAIR OF GILTWOOD FRAMED WATERCOLOR PAINTINGS

USD 500 - 1,000

Each painting is giltwood framed, and depicts a female equestrian. H: 10 in. L: 10 3/4 in.



8096: JOHAN NICOLAAS VAN LOKHORST (DUTCH, 1837 - 1929)

USD 1,000 - 2,000

Giltwood framed, depicts a few cattle in river. Signature on bottom to read Van Lokhorst. Jan van Lokhorst was born in 1837 in Utrecht, where he lived and worked until 1872. After this, he moved to Brussels. Well-known for his painted and drawn city scenes in Utrecht and the landscapes surrounding the Dom city. The record sold price for this artist is USD \$6,002, for his work, "By the Bridge", which was sold at Christie's Amsterdam in 2004. H: 12 1/2 in. L: 18 in.



8097: FRANCOIS (CARBUCCIA) CARBU, FRENCH (1896 - UNKOWN)

USD 600 - 800

Oil on canvas painting depicts a beautiful seashore scene with waves crashing on the beach. Signature to on bottom right to read Carbu. Francois (Carbuccia) Carbu, was a French artist who was known for painting of seacapes and boats. H: 21 in. x W: 39 in.



8098: FRAMED WATERCOLOR PAINTING OF JERUSALEM STREET

USD 500 - 700

Framed. Signed on bottom left to read Bullock. Painting Only: L: 11 in. H: 14 in. With Frame: L: 17 in. H: 21 in.

DR. RAFF'S CANADIAN ART 2 & OTHER ESTATES



8099: CORNELIUS KOPPENOL, DUTCH (1866 - 1946)

USD 800 - 1,200

DAMAGED. Giltwood framed, depicts a group of people chatting on the side of a road. Signature to read C. Koppenol. Cornelius Koppinol (1866-1946), was a Dutch artist who was known for figural, still life and landscape paintings. He studied at the Academy of the Hague, among others under J. P. Koelman and A. van den Berg. He was also a member of "Pulchri Studio" in The Hague. The record sold price for this artist in auction is USD \$7,526 for his work, Two Children with Geese in a Polder Landscape, which was sold in 2006. H: 10 1/2 in. x W: 14 1/2 in.



8100: JACK BEDER, CANADIAN (1910 - 1987)

USD 2,000 - 2,500

Depicts a park scene, overlooking a street. Signature on bottom right to read Beder. Jack Beder (1910 - 1987), a well respected Canadian artist. Born in Poland in 1910 and immigrated to Montreal in 1926. He studied at the École des Beaux-Arts de Montréal from 1929-1934, during which time he won several awards and prizes for drawing and painting. His style was representational and impressionist and his main influences were Maurice Cullen and, more importantly, James Wilson Morrice, both Canadian painters. He was best known for Montreal street scenes and 1930s Montreal cafes, but also painted landscapes, still-lives, gardens and portraits/figures. He worked in oils, acrylics, gouaches, watercolors, pastels, drawings and prints (serigraphs, linoprints, monotypes and monoprints). He also produced sculpture, mostly non-objective, in wood, limestone, marble, serpentine, plaster and liqutex/ cardboard. The record sold price for this artist in auction is USD \$7,145 for "Tree Image (Sculpture #43)", which was sold at Waddington's in 2017. H: 10 3/4 in. L: 13 3/4 in.



8101: FRAMED OIL PAINTING OF A PORTRAIT

USD 500 - 700

Giltwood frame, an oil painting of a youngster's portrait whom wearing a hat and having a pipe in the mouth. Signed on bottom right which is illegible. Painting Only: L: 11 in. H: 15 1/4 in. With Frame: L: 21 in. H: 24 1/2 in.



8102: DRAWING OF MORNING GLORIES

USD 500 - 800

Framed, depicts blossoming morning glories of blue, white and purple colors. Titled "Morning Glories," stated at the back to read after Pauline Guidery's work. Drawing Only: L: 14 in. H: 17 1/2 in. With Frame: L: 22 in. H: 25 1/2 in.



8103: OIL PAINTING ON CANVAS OF A NIGHT FOREST

USD 300 - 500

The moon is peeking behind tall forest trees, dim moonlight shining on the grassland. Unsigned. L: 22 1/4 in. H: 30 1/4 in.



8104: FRAMED OIL PAINTING OF A NOBLE BOY

USD 500 - 700

Beautifully framed, depicts a noble boy playing golf. Unsigned. Painting Only: 7 1/2 in. H: 9 1/2 in. With Frame: L: 18 1/2 in. H: 21 in.



8105: FRAMED OIL PAINTING OF A NOBLE MAN

USD 500 - 700

Giltwood frame. Signed on bottom right to read Benson. Painting Only: L: 11 1/2 in. H: 15 1/2 in. With Frame: L: 22 in. H: 27 in.

DR. RAFF'S CANADIAN ART 2 & OTHER ESTATES



8106: WILFRED MOLSON BARNES, CANADIAN (1882 - 1955)

USD 800 - 1,000

Framed. Depicts two buildings amongst forest. Signature on bottom to read W M Barnes. Wilfred Barnes (aka. Wilfred Molson Barnes; W. M. Barnes) was a Canadian painter, draftsman, photographer and educator. His primary mediums were oil on panel and oil on canvas, although, he has works in watercolor, pastel, graphite and mixed mediums. His subjects were landscapes (usually spring or summer scenes, noted for their big skies), portraits, figures, genre*, marine scenes, rivers, mountains, lakes and icebergs. H: 9 3/4 in. L: 13 1/4 in.



8107: DUTCH OIL ON BOARD PAINTING OF A TOWN SCENE

USD 350 - 700

Framed, depicts a daily life scene of town people on street. Not signed. H: 14 in. L: 10 in.



8108: DECORATIVE MARBLE PLINTH

USD 200 - 300

With a clown playing guitar and sitting on a bench. With a marble plinth.



8109: DECORATIVE LAMP

USD 200 - 300

Adorned with a figure of a clown playing guitar.



8110: DECORATIVE MARBLE PLINTH WITH A GILDED GIRL

USD 200 - 300

Adorned with a gilded figure of a girl, modeled in grand dress, and in a sitting position.



8111: CHINESE SANG DE BOEUF VASE

USD 1,000 - 2,000

Raised on a splayed foot, with a flaring mouth. Flanked by two tubes on the neck as handles. H: 15 in.



8112: INDIAN BRONZE FIGURE OF A DEITY

USD 100 - 200

H: 11 1/2 in.

DR. RAFF'S CANADIAN ART 2 & OTHER ESTATES



8113: GROUP OF FIVE RELIGIOUS METALWORKS

USD 200 - 300

Comprising of different Asian religious metal artifacts.



8114: LARGE CHINESE CABINET WITH INLAYS

USD 500 - 800

With hinged doors which opened up to multiple compartments and drawers. Beautiful and intricate carved details on the columns on the two side, as well as on the short foot. Inlaid with stones in the front with design of children performing dragon dance.



8115: LARGE CHINESE GREEN GLAZED MOONFLASK

USD 100 - 200

Flanked by two chilongs on the neck as handles.H: 19 1/2 in.



8116: CHINESE BLUE AND WHITE PLANTER

USD 100 - 200

Raised on four short legs, with reticulated design on the exterior.



8117: ANTIQUE CHINESE HAN DYNASTY POTTERY HORSE HEAD

USD 2,000 - 3,000

Restored. Covered in overall with patinas.H: 22 1/2 in. L: 22 1/2 in. W: 7 3/4 in.



8118: CHINESE COPPER ALLOY WINE SERVER AND A SCULPTURE

USD 200 - 300

Chinese copper wine server (no cover, H: 5 1/2 in.), and a brass sculpture of bird (damage on wing, H: 5 3/4 in.).



8119: LARGE CHINESE LACQUERED PLANTER

USD 100 - 300

Decorated with intricate details on the exterior.H: 7 1/3 in. W: 14 3/4 in.



8120: FOUR BEAUTIFUL JAPANESE FIGURES

USD 200 - 300

Each performing a task, while their pets watch and cling on their humans.

DR. RAFF'S CANADIAN ART 2 & OTHER ESTATES



8121: GROUP OF SEVEN CHINESE FIGURES

USD 200 - 250

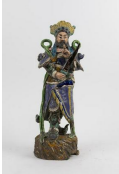
An interesting group of seven (7) figures, of scholars, each performing a task, including an elderly bathing a child, and a rooster.



8122: PAIR OF ASIAN WOODEN WALL HANGING FRAMES

USD 100 - 200

Oval wooden frames with rectangular center that are intricately carved, resembling Thai-style decor.



8123: LARGE CHINESE POTTERY FIGURE OF A GENERAL

USD 100 - 200

Standing on a rock pedestal, the figure wears a colorful uniform while one hand holds a sword. H:



8124: VINTAGE BRASS BIBLE STAND

USD 50 - 80

Beautiful adjustable stand for Bible or books.



8125: SET OF FOUR CHINESE PORCELAIN PLATES

USD 200 - 300

Four serving cloud-shaped and oval platters with colorful fruits and finger citron design.



8126: SET OF EIGHT CHINESE PORCELAIN PLATES AND BOWLS

USD 300 - 400

Four plates with floral design, and another four octagonal bowls with sage green interior.



8127: SMALL JAPANESE BLUE AND WHITE LIDDED BOWL

USD 100 - 120

Beautifully painted with flowers all over, including cover with a round finial. Small loop handle on each side.



8128: PAIR OF CHINESE BLUE AND WHITE SQUARE VASES

USD 800 - 1,000

Each vase is beautifully painted with landscape scenes on the body. Six-character mark to read Guangxu on the bottom. H: 15 in.

DR. RAFF'S CANADIAN ART 2 & OTHER ESTATES



8129: CHINESE BLUE AND WHITE LIDDED JAR

USD 200 - 250

Four-character mark to read Chenghua on the bottom.



8130: SET OF SIX SMALL CHINESE ENAMELED BOWLS

USD 50 - 100

Of concave form, each has a six-character mark to read Qianlong on the bottom.



8131: CHINESE CELADON VASE

USD 100 - 150

Raised on a short foot, with a bulbous bottom. Tapered to a long, ribbed neck with a flaring mouth. Flanked by two fishes on two sides on the neck as handles. The bottom heavy body is incised with floral motif.



8132: PAIR OF CHINESE BLUE AND WHITE PLATES

USD 100 - 120

Each plate is painted in the center of foo lion.



8133: PAIR OF CHINESE BLUE AND WHITE DOUBLE GOURD VASES

USD 200 - 300

Each is beautifully painted with blossoming flowers and scrolling foliage on the body. A two-character mark on the bottom.



8134: PAIR OF CHINESE ENAMELED PORCELAIN FIGURES

USD 50 - 100

Each figure is modeled as a bald man dressing in a long robe and holding a basket on one hand.



8135: FRAMED CHINESE WOVEN SILK PANEL

USD 200 - 300

Framed. A beautiful, intricate work that depicts a traditional Chinese park.



8136: GROUP OF NINE MINIATURE CHINESE ITEMS

USD 200 - 300

Comprising of a pair of foo dogs, a pair of lions, two figures of a scholar and a child, a mythical creature in recumbent position, a tray, and a round pill box.

DR. RAFF'S CANADIAN ART 2 & OTHER ESTATES



8137: CHINESE SANG DE BOEUF VASE

USD 100 - 150

Having a rectangular pear shape, and slightly mottled ground.



8138: JAPANESE BRONZE FIGURE OF A GENERAL

USD 100 - 150

Cast with great details, of a Japanese general dressing in a traditional armor.



8139: CHINESE BRONZE FIGURE OF GUANG YU

USD 100 - 120

With great and intricate details.



8140: GROUP OF SIX CHINESE PORCELAIN FIGURES

USD 200 - 300

Of different designs, as immortals and generals.



8141: LARGE CHINESE PORCELAIN FIGURE OF A HAPPY BUDDHA

USD 200 - 300

With children.



8142: IRON RED PORCELAIN TABLE WITH BLUE AND WHITE DECOR

USD 3,000 - 5,000

Hand-painted under the glaze with panels of figural scenes on top. L: 29 in. D: 33 1/2 in



8143: PAIR OF STONE (JADE-LIKE) ELEPHANT STANDS

USD 500 - 1,000

Damaged. H: 13 1/8 in. L: 17 1/2 in. W: 10 in



8144: CHINESE FAMILLE ROSE OVAL SHAPED VASE

USD 300 - 600

H: 13 1/4 in.

DR. RAFF'S CANADIAN ART 2 & OTHER ESTATES



8145: PAIR OF POTTERY JARS

USD 300 - 500

Damaged. The upper half of each jar is intricately carved with designs of figures and houses.



8146: CHINESE CARVED BISQUE PORCELAIN VASE

USD 300 - 600

H: 26 7/8 in.



8147: CHINESE WHITE BISCUIT VASE

USD 500 - 1,000

With raised design of a dragon chasing a flaming pearl around the body. Flanked by chilongs on the sides as handles. H: 25 7/8 in.



8148: CHINESE MULTI-COLORED PORCELAIN VASE

USD 500 - 800

Beautifully decorated all over vase with colorful floral blossoms. Flanked by two handles on the neck of the vase.



8150: CHINESE FAMILLE ROSE VASE WITH TWO HANDLES

USD 350 - 700

Festive figural painting on white ground below a diaper of enamel border on the neck. Raised leopard head biting on a red ring on each side. H : 15 1/4 in.



8151: PAIR OF CHINESE BRONZE FIGURES OF QILIN

USD 500 - 800

H: 21 in L: 27 in.



8152: A FIGURAL WARRIOR OR LUO HAN

USD 500 - 1,000

Standing on crashing waves and with a pearl or ball on his left foot.



8153: ANTIQUE BRONZE HAPPY BUDDHA

USD 2,000 - 3,000

Wearing a draping robe on his torso, his round belly exposed above a long loincloth, the Happy Buddha with his wide smile and elongated ears, stands on a tree stump while holding a broom draped around his back, and his left hand holding an inglot. H: 34 1/2 in.

DR. RAFF'S CANADIAN ART 2 & OTHER ESTATES



8154: PAIR OF BRONZE FOO LIONS

USD 500 - 800

In leaping position, anchored on a ball on square pedestal. H: 28 1/4 in.



8155: BRONZE VESSEL WITH GOLD INLAID

USD 1,800 - 2,200

Gold inlays were found throughout the body and vase H: 22 5/8 in.



8156: FINE BRONZE STATUE OF A LEAPING HORSE

USD 200 - 300

In great details with a plinth. H: 16 in.



8157: CHINESE CARVED WOODEN FIGURE OF GUANYIN

USD 300 - 800

Standing on a foliate pedestal, the deity cradles in her left arm a scepter with tassel, while her right hand in shoonya or shuni mudra as a seal of patience and awareness of the moment. H:



8158: CHINESE BLUE AND WHITE JARDINIERE

USD 1,000 - 1,500

Painted with trees in the woods beneath a border of hanging garlands. H: 20 7/8 in. D: 20 3/4 in.



8159: ANTIQUE CHINESE BLUE AND WHITE FISH JAR

USD 700 - 1,000

Beautifully painted around the body with a figural scene.H: 19 3/4 in. D: 20 1/2 in.



8160: CHINESE STATUE OF MONEY GOD

USD 1,000 - 2,000

H: 21 in.



8161: CHINESE BRONZE VESSEL

USD 2,000 - 3,000

Flanked by chillongs on the bottom; with two creatures on the neck as handles, and birds atop of the lid.

DR. RAFF'S CANADIAN ART 2 & OTHER ESTATES



8162: BRONZE RITUAL VESSEL

USD 800 - 1,200

Finely cast with a pomegranate shaped body, and elaborate handles with rings.



8163: DOUBLE PHOENIX-SHAPED BRONZE VESSEL

USD 500 - 800

H: 10 5/8 in.



8164: CHINESE BRONZE VESSEL

USD 2,000 - 3,000

Cast bronze with etched design all over the body of a bulbous vase on fowl base, and a lid with a fowl finial on tripod fowl legs.



8165: PAIR OF CHINESE BRONZE HORSES

USD 500 - 800

H: 14 1/4 in. L: 15 in.



8166: PAIR OF BRONZE STATUES OF BUDDHA

USD 1,000 - 2,000

Both are standing atop of lotus pedestals, with left hands holding vessels. H: 19 1/2 in.



8167: SET OF THREE CHINESE FU LU SHOU GODS

USD 800 - 1,200

Fu, Lu, and Shou are the three gods that represent fortune, prosperity and longevity. H: 14 1/4 in.



8168: CHINESE HONG SHAN STONE FIGURE

USD 3,000 - 5,000

H: 24 3/4 in.



8169: CHINESE BRONZE TRIPOD VESSEL

USD 1,000 - 2,000

Raised on three legs, flanked by two handles. H: 8 1/8 in.

DR. RAFF'S CANADIAN ART 2 & OTHER ESTATES



8170: CHINESE STONE STATUE OF A SEATED BUDDHA

USD 500 - 800

His eyes closed in meditation, and seated with one palm upward, and the other hand holding his foot. H: 20 in.



8171: SET OF TWO FIGURAL PORCELAINS OF A LONGEVITY GOD

USD 300 - 500

H: 12 1/4 in.



8172: CHINESE BLUE AND WHITE JAR

USD 100 - 200

Footed hexagonal vase with figural pattern. Double ring mark on the base. H:



8174: CHINESE PORCELAIN FIGURE OF HAPPY BUDDHA

USD 300 - 500

Seated Happy Buddha with one hand holding a prayer bead. H:



8175: CHINESE BLUE AND WHITE JAR

USD 300 - 600

H: 6 in.



8176: CHINESE BLUE AND WHITE VASE WITH HANDLES

USD 300 - 500

Finely painted with a soaring dragon on the body, flanked by two chilongs on the neck as handles. Four-character mark to read Qianlong on the bottom.



8177: CHINESE FAMILIE ROSE VASE

USD 300 - 500

With figural painting on one panel, and a Chinese inscription on the other panel. H: 22 3/4 in.



8178: CHINESE BLUE AND WHITE CELADON VASE

USD 300 - 500

Finely painted with a figural scene around the body, flanked by two handles on the neck of the vase.

DR. RAFF'S CANADIAN ART 2 & OTHER ESTATES



8179: ANTIQUE CHINESE JADE ROUND DISC

USD 250 - 500

Of foliate motif. D:10 in.



8180: HAND-CARVED JADEITE OF A CABBAGE

USD 500 - 800

H: 7 3/8, L: 12 3/4 in.



8181: PAIR OF CARVED FIGURAL SOAPSTONES OF A MAN ON FISH

USD 300 - 500

H: 11 1/4 in.



8182: CHINESE CELADON BOWL

USD 100 - 200

Of concave form, raised on a short foot.H: 2 1/2 in. D: 5 1/2 in.



8183: CHINESE POTTERY JAR WITH HANDLES

USD 100 - 150

Has seal on the bottom.H: 6 1/8 in.



8184: FLAMBE-LIKE OVOID PORCELAIN VASE

USD 200 - 300

H: 10 3/4 in.



8185: CHINESE CELADON MEIPING VASE

USD 2,000 - 3,000

H: 13 1/8 in.



8186: CHINESE CRACKLE VASE WITH RAISED ANIMAL HANDLES

USD 300 - 500

H: 10 1/4 in.

DR. RAFF'S CANADIAN ART 2 & OTHER ESTATES



8187: CHINESE BLUE GLAZED MELON-SHAPED JAR

USD 100 - 300

With seal on the side.



8188: CHINESE IRON RED VASE WITH FOO LION HEAD HANDLES

USD 300 - 500

Seal Mark to read Kangxi to the bottom.H: 12 7/8 in.



8189: CHINESE GLOBULAR VASE WITH KOI

USD 300 - 500

The globular body rising to a tall cylindrical neck, painted to the exterior with red and black koi.



8190: BLUE AND WHITE BOTTLE VASE WITH METAL TRIMS

USD 200 - 400

Painted with a war scene on the body, flanked by two handles on the neck. Mark to the bottom. H: 15 7/8 in.



8191: CHINESE CERAMIC BALUSTER VASE WITH RAISED DESIGN

USD 300 - 500

Carved in details of two dragon chasing flaming pearl on the body. Flanked by two chilongs as handles on the neck. H: 29 1/4 in.



8192: TALL WHITE PORCELAIN VASE OF RAISED DRAGON DESIGN

USD 300 - 500

The smooth crackled neck with two creature handles leads to a globular body on circular base with raised design all over.



8193: CHINESE FAMILLE ROSE BLUSTER VASE

USD 300 - 500

Beautifully painted with phoenixes in a blossoming garden scene. H: 18 3/4 in.



8194: CHINESE CARVED BISQUE PORCELAIN VASE

USD 700 - 1,000

Carved in fine details of a flying dragon and a flaming pearl on the body. Flanked by two chilongs on the neck as handles. Six-character mark to read Qianlong on the rim. H: 24 7/8 in.

DR. RAFF'S CANADIAN ART 2 & OTHER ESTATES



8195: CHINESE IRON RED 'FOO LION' VASE

USD 500 - 800

Painted with a dancing foo lion on the body, with inscription on the back. Flanked by two handles on the shoulder of the vase. H: 14 1/4 in.



8196: BLUE AND WHITE PORCELAIN VASE

USD 300 - 500

H: 15 1/8 in.



8197: CHINESE FAMILLE ROSE ROULEAU VASE

USD 500 - 800

Finely painted with a figural scene all around the vase. H: 23 1/2 in.



8198: CHINESE BLUE AND WHITE BOTTLE VASE

USD 300 - 500

The globular body rising to a tall cylindrical neck with a slightly flaring rim. A pair of dragon shaped handles on the side of the neck. Six character mark of Zhizheng H: 16 1/4 in.



8199: CHINESE FAMILLE ROSE BALUSTER VASE

USD 300 - 500

Painted with a Chinese warrior scene.



8200: CHINESE IRON RED FOO LION VASE

USD 300 - 500

H: 14 1/4 in.



8201: CHINESE CARVED BRONZE FIGURE OF 'LU'

USD 300 - 500

'Lu' represents status in Chinese religion, he is the star of prosperity, rank and influence.



8202: ANTIQUE FIGURAL METAL TEAPOT, OF A LION

USD 200 - 300

H: 8 in.

DR. RAFF'S CANADIAN ART 2 & OTHER ESTATES



8203: CHINESE BRONZE-MOUNTED LIDDED OVOID VASE

USD 800 - 1,000

Enameled tendrils decorate the vase, domed lid with cone finial. H: 6 in.



8204: SET OF TWO ENAMELED LIDDED GLOBULAR BRONZE VASES

USD 500 - 800

Lotus flowers decorate the central body in between blue enamel bands. H: 2 5/8 in.



8205: BLUE AND WHITE PORCELAIN MEIPING VASE

USD 700 - 1,000

Body depicting of large flower bloom surrounded by loose banana leaves, between bands of lapel and flowers. H: 30 in.



8206: FINE CHINESE OVOID PORCELAIN VASE

USD 800 - 1,200

Six-character mark to read Kangxi on the bottom. H: 15 1/2 in.



8207: CHINESE BLUE AND WHITE MEIPING VASE

USD 200 - 300

With a bulbous shoulder. Painted with panels of cranes around the body.



8208: CHINESE BLUE AND WHITE JAR

USD 300 - 350

Painted with flying dragon around the body.



8209: CHINESE BLUE AND WHITE VASE

USD 300 - 500

Beautifully painted with blossoming chrysanthemums and scrolling leaves around the body. Flanked by two tubes on the neck as handles.



8210: CHINESE FAMILLE ROSE FIGURAL VASE

USD 250 - 550

Painted in beautiful colors rendering three generations from an elderly man, middle-aged man, and a young boy seated under a tree. Handles of bamboo design. Four-mark character in red ink on the bottom of the vase.

DR. RAFF'S CANADIAN ART 2 & OTHER ESTATES



8212: CHINESE BLUE AND WHITE OCTAGONAL MEIPING VASE

USD 250 - 350

With a beautiful meiping form, hand-painted with various trees on each of the eight panels under auspicious symbols around the neck.



8213: CHINESE BLUE AND WHITE LIDDED JAR

USD 350 - 450

Decorated with a dragon in relief on the body, chasing a flaming pearl.



8214: KOREAN BLUE AND WHITE VASE

USD 100 - 200

With a bulbous body, flanked by a long neck and slightly flared mouth.



8215: CHINESE BLUE AND WHITE ROULEAU VASE

USD 500 - 700

Painted with a figural scene on the body. A double-ring mark on the bottom.



8216: CHINESE BRONZE VESSEL

USD 200 - 300

Raised on a straight foot, with a bulbous body and a flaring mouth. Flanked by a handle.H: 7 in.



8217: CHINESE CELADON VASE

USD 200 - 300

Incised on the body with flowers.



8218: ANTIQUE CHINESE DARK GREEN GLAZED TRIPOD CENSER

USD 500 - 800

Raised on three short legs.



8219: CHINESE JUNYAO PLANTER

USD 350 - 450

Raised on three short legs, with holes on the bottom for drainage.

DR. RAFF'S CANADIAN ART 2 & OTHER ESTATES



8220: CHINESE CELADON VASE

USD 300 - 500

Flanked by two tubes on the neck as handles. Six-character mark on bottom to read Qianlong.



8221: CHINESE CELADON VASE

USD 300 - 350

Raised on a splayed foot. Flanked by two ring handles on the shoulder, with a flaring mouth. Six-character mark to read Qianlong on bottom.



8222: CHINESE BLUE AND WHITE MEIPING VASE

USD 300 - 350

Beautifully painted with blossoming flowers and scrolling leaves on the body.



8223: CHINESE FIGURAL VASE

USD 200 - 300

Beautifully painted with figural scene on the body, with inscription on the back. Flanked by two bamboo-like tubes on the neck, with a flaring mouth. Four-character mark to read Hongxian on the bottom.



8224: CHINESE BLUE AND WHITE OCTAGONAL MEIPING VASE

USD 500 - 700

With a bulbous shoulder. Each side is beautifully painted with blossoming flowers and trees.



8225: CHINESE CELADON DOUBLE GOURD VASE

USD 500 - 800

In greenish grayish color etched with floral design.



8226: CHINESE BLUE AND WHITE GLOBULAR VASE

USD 300 - 500

Six-character mark to read Qianlong on the bottom.



8227: CHINESE KINTSUGI REPAIRED CELADON MEIPING VASE

USD 200 - 300

Stamped mark on the bottom.

DR. RAFF'S CANADIAN ART 2 & OTHER ESTATES



8228: SET OF FOUR CHINESE PORCELAIN HANGING PANELS

USD 800 - 1,000

Each porcelain panel is beautifully painted with landscape with inscription on top. Each is enframed with a beautifully carved wooden frame. Porcelain Plaque Only: H: 29 in. W: 8 1/2 in.



8229: LARGE OLD CHINESE WOODEN DINING TABLE

USD 300 - 500

Of ovoid form with two extension panels, showing carved openwork to apron corners. 30 1/2 in. x 66 1/2 in. 44 1/2 in.



8230: SET OF SIX CHINESE WOODEN CHAIRS

USD 400 - 600

Of ovoid form with two extension panels, showing carved openwork to apron corners. 30 1/2 in. x 66 1/2 in. 44 1/2 in.



8231: FAUX-STAINED GLASS HANGING DECORATION

USD 300 - 350

Hanging faux-stained glass window decoration. H: 26 in. L: 14 in.



8232: CHINESE BLUE AND WHITE LIDDED JAR

USD 100 - 200

Painted with floral motif around the body.



8233: CHINESE BLUE AND WHITE PLATE

USD 100 - 200

Shallow footed bowl, the middle painted with interlocking bats, with fan-leaves by the border.



8234: CHINESE CARVED JADE FIGURAL GROUP

USD 800 - 900

In white and green color. Of a phoenix perching on a tree. With a wooden stand. H: 7 1/4 in.



8235: SHANG DYNASTY BRONZE TRIPOD LIBATION CUP

USD 2,000 - 3,000

Raised on three, tall foot. With carved details on the body. Flanked by two protrusions atop, and a handle on the side. H: 7 1/2 in.

DR. RAFF'S CANADIAN ART 2 & OTHER ESTATES



8236: CHINESE GLAZED CLAY FIGURE OF A FISHERMAN

USD 100 - 120

With a stamped mark on the bottom.



8237: CHINESE ENAMELLED PORCELAIN FIGURE OF HAPPY BUDDHA

USD 200 - 300

In a sitting position, dressing in a flowing robe, with five children clinging on him.



8238: JAPANESE MEIJI PERIOD PORCELAIN FIGURE OF A LADY

USD 200 - 300

Dressing in a beautiful kimono and a hat. Beautifully painted with enamel of floral patterns.H: 14 1/4 in.



8239: JAPANESE MEIJI PERIOD KUTANI FIGURE OF A BUDDHA

USD 100 - 150

Modeled in a sitting position, dressing in an multi-colored, enameled robe with lotus motif. H: 8 1/2 in.



8240: JAPANESE MEIJI PERIOD ENAMELED FIGURE OF GEISHA

USD 200 - 300

Dressing in a beautiful kimono, painted with enamel of blossoming flowers.



8241: LARGE 19TH C. CHINESE BLANC DE CHINE MEIPING VASE

USD 500 - 800

Beautifully hand-carved in relief all over the body with water lilies and fishes. A carved four-character mark to the bottom.H: 13 in. W: 8 in.



8242: CHINESE TEA DUST GLAZED DOUBLE VASE

USD 100 - 150

Flanked by a long, narrow neck.



8243: CHINESE REPUBLIC PERIOD FAMILLE ROSE MINATURE VASE

USD 100 - 150

Beautifully hand painted with blossoming flowers around the vase, and flanked by a long, narrow neck. A mark on the bottom.

DR. RAFF'S CANADIAN ART 2 & OTHER ESTATES



8244: JAPANESE IMARI HEXAGONAL BOWL

USD 200 - 300

Painted in the center of a foo lion. A four-character double ring mark on the bottom.H: 5 1/8 in. W: 10 3/4 in.



8245: ANTIQUE CHINESE WOODEN PANEL

USD 500 - 700

Intricately and beautifully painted with a celebratory scene in an Imperial garden. Inscription and a stamp mark on top left. Flanked by two metal hanging hinges atop.L: 60 in. H: 22 in.



8246: CHINESE ENAMELED PORCELAIN PLATE

USD 200 - 300

Beautifully painted in the center of a seated luohan.



8247: CHINESE ENAMELED PORCELAIN ROULEAU VASE

USD 200 - 300

Unusually painted with red and ink colored glaze on the body with roosters and trees, with an inscription on the back. A six-character double-ring mark on the bottom to read Yongzheng.H: 22 1/2 in.



8248: CHINESE ENAMELED PORCELAIN FIGURE OF AN EAGLE

USD 200 - 300

Modeled as an eagle perching on a garden rock. Painted in fine details, and with a mark on the bottom.H: 19 in.



8249: CHINESE ENAMELED PORCELAIN FIGURAL VASE

USD 200 - 300

Finely painted on the body with a figural scene in garden. A four-character mark to the bottom.H: 16 in.



8250: CHINESE FAMILLE NOIRE LIDDED TEMPLE JAR

USD 200 - 300

Beautifully painted with beauties in a garden scene. Six-character double-ring mark on the bottom to read Kangxi.H: 20 in.



8251: CHINESE BLUE AND WHITE HEXAGONAL TEAPOT WITH LID

USD 200 - 300

Painted around the body with flowers and auspicious objects. Flanked by a long sprout and a high handle.H: 17 in.

DR. RAFF'S CANADIAN ART 2 & OTHER ESTATES



8252: TALL CHINESE BLUE AND WHITE OCTAGONAL GARDEN SEAT

USD 200 - 300

Finely painted around the body with an elaborated landscape. H: 22 in.



8253: CHINESE MADE-FOR-EXPORT SQUARE PLANTER

USD 200 - 300

Made for European market. Beautifully painted with flowers, figures and emblems on the body. Flanked by a gilded foo lion on each corner. H: 6 1/2 in. W: 9 in.



8254: CHINESE POTTERY FIGURE OF A GOAT

USD 200 - 300

Standing on four legs, decorated with red and white paint on the body. H: 12 in. L: 14 in.



8255: CHINESE BLUE AND WHITE GU VASE

USD 200 - 300

Finely painted with landscapes and blossoming flowers on the body, as well as on the neck. H: 20 in.



8256: CHINESE CARVED WOODEN FIGURE OF A CHILD

USD 200 - 300

In a crouching positing and contemplating. H: 15 in. L: 17 in.



8257: CHINESE MADE-FOR-EXPORT BLUE AND WHITE BASIN

USD 200 - 300

Made for European market. Painted in the center and on the exterior of foreign town scenes. A family crest mark on the bottom. H: 4 in. D: 15 in.



8258: TALL CHINESE ENAMELED LIDDED TEMPLE JAR

USD 300 - 500

Beautifully painted around the body with birds, trees and blossoming flowers. Flanked by a gilded foo lion atop as finial. H: 25 in.



8259: CHINESE FAMILLE VERTE JAR

USD 300 - 500

Beautifully painted with a hundred children scene around the body. H: 16 in.

DR. RAFF'S CANADIAN ART 2 & OTHER ESTATES



8260: CHINESE FAMILLE ROSE NINE-PEACH VASE

USD 800 - 1,000

Finely painted with peaches and flying bats. Four-character mark on the bottom to read Qianlong.H: 20 in.



8261: UNUSUAL CHINESE LACQUERED TRIPOD CENSER

USD 200 - 300

Raised on three legs, finely gilt painted with a landscape design around the body.H: 12 in.



8262: CHINESE ENAMELED PORCELAIN JARDINIERE

USD 2,000 - 3,000

Finely painted with a figural scene around the body with scholars in a garden setting.H: 15 in.



8263: UNUSUAL CHINESE ENAMELED PORCELAIN LIDDED VASE

USD 300 - 500

With a bulbous body, tapered to a long neck. Finely painted with The Eight Immortals and auspicious objects on the body. Beautifully adorned with gilded beads all around.H: 22 in.



8264: CHINESE BLUE AND WHITE LIDDED TEA JAR

USD 300 - 400

Painted with scholars around the body, and Chinese characters "Tea" on the body as well as on the lid.H: 16 in.



8265: CHINESE ENAMELED PORCELAIN JAR

USD 500 - 800

Raised on a splayed foot, finely painted with immortals around the body. Flanked by two creature heads on the sides as handles.H: 11 in. W: 18 1/2 in.



8266: TALL CHINESE FAMILLE NOIRE VASE

USD 200 - 300

Beautifully painted with phoenix, birds, blossoming flowers and butterflies against the black background.H: 23 in.



8267: CHINESE ENAMELED PORCELAIN GARDEN SEAT

USD 200 - 300

Beautifully painted with peacocks, birds and blossoming flowers on the body, with a reticulated double-coin design on the back. Circa 1940 - 1970.H: 17 in.

DR. RAFF'S CANADIAN ART 2 & OTHER ESTATES



8268: CHINESE ENAMELED GLOBULAR VASE

USD 500 - 800

With a bulbous body and a flaring mouth. Flanked by two creature heads on the shoulder as handles. Beautifully painted with figural scenes around the body.H: 14 3/4 in.



8269: CHINESE PORCELAIN FIGURE OF AN IMMORTAL

USD 350 - 550

Dressing in a flowing robe, standing atop of a dragon and raising his two arms. A raised mark on the bottom.H: 23 in.



8270: ANTIQUE TALL CHINESE FAMILLE NOIRE VASE

USD 800 - 1,000

Beautifully painted with panels of foo lions around the body, as well as on the neck, against a black background. Six-character double-ring mark to read Kangxi on the bottom.H: 24 in.



8271: CHINESE ENAMELED PORCELAIN JARDINIERE

USD 200 - 300

Painted on the body with panels of figural scenes against a dark blue background.H: 15 in.



8272: VERY LARGE CHINESE BLUE AND WHITE SQUARE VASE

USD 450 - 750

Painted on each side of the body as well as the neck with scenery.H: 37 1/2 in.



8273: CHINESE FAMILLE VERTE GARDEN SEAT

USD 300 - 500

Intricately painted with various figures and foo lions around the body, with some reticulated design. Decorated with blossoming flowers and scrolling leaves on top.H: 18 1/2 in.



8274: CHINESE ENAMELED PORCELAIN GARDEN SEAT

USD 300 - 500

Beautifully decorated with flowers all around the garden seat.H: 19 in.



8275: ANTIQUE CHINESE GLAZED VASE

USD 200 - 300

Covered overall in a light grey glaze, with carved in relief around the neck.H: 13 in.

DR. RAFF'S CANADIAN ART 2 & OTHER ESTATES



8276: TALL CHINESE FIGURAL ROULEAU VASE

USD 200 - 300

Finely painted on the body with a figural scene.H: 24 in.



8277: CHINESE BLUE AND WHITE VASE

USD 200 - 300

Beautifully painted with four seasons around the body with blossoming flowers, trees and birds.H: 15 in.



8278: LARGE CHINESE BLUE AND WHITE TRIPOD CENSER

USD 300 - 500

Raised on three creature legs, beautifully painted with flowers and birds around the body. Four-character on the back of the short neck, and flanked by two tall handles on the sides.H: 23 in.



8279: CHINESE BLUE AND WHITE FIGURAL VASE

USD 200 - 300

Finely painted with figural scene around the body as well as on the neck.H: 14 3/4 in.



8280: CHINESE ENAMELED FIGURAL VASE

USD 200 - 300

Beautifully painted in multicolor of a figural scene around the body. Four-character mark on the bottom.H: 18 in.



8281: CHINESE BLUE AND WHITE SQUARE VASE

USD 200 - 300

Beautifully painted all around the body and on the neck with alternating panels of floral and auspicious objects.H: 22 1/2 in.



8282: CHINESE BLUE AND WHITE MOONFLASK

USD 500 - 800

Beautifully painted with elaborated landscape scenes on both sides of the body. Flanked by two chilongs on the neck as handles.H: 18 1/2 in.



8283: CHINESE FAMILLE ROSE FISH BOWL

USD 200 - 300

Beautifully painted around the body with swimming gold fishes and blossoming water lilies. Six-character mark near the rim to read Qianlong.H: 12 in.

DR. RAFF'S CANADIAN ART 2 & OTHER ESTATES



8284: ANTIQUE CHINESE BLUE AND WHITE LIDDED JAR

USD 300 - 500

Painted around the body with foo lions. H: 16 in.



8285: TALL CHINESE CRACKLEWARE VASE

USD 300 - 400

Of phoenix tail form, covered over all in dark green, crackle glaze. Beautifully decorated in low relief of blossoming flowers around the bulbous body. H: 24 1/2 in.



8286: LARGE CHINESE LIDDED TEMPLE JAR

USD 500 - 800

Beautifully painted in multicolor with two dragons chasing a flaming pearl on the body. H: 27 in.



8287: TALL CHINESE ENAMELED PORCELAIN FIGURAL VASE

USD 500 - 600

Intricately painted with a figural scene around the body. Flanked by two chilongs on the neck as handles. H: 25 in.



8288: PAIR OF CHINESE PANELS WITH BEAUTIFUL INLAYS

USD 500 - 800

Each panel has a beautiful design of a birds perching on a blossoming tree. H: 31 in. W: 13 in.



8289: ANTIQUE 19TH C. SANG DE BOEUF OCTAGONAL VASE

USD 500 - 1,000

Four-character mark on the bottom to read Yongzheng. H: 17 1/2 in.



8290: ANTIQUE CHINESE GLAZED PORCELAIN VASE

USD 500 - 800

Covered in a mottled brown glaze. Four-character mark to the base to read Yongzheng (of period). H: 16 1/2 in.



8291: ANTIQUE CHINESE SANG DE BOEUF TRIPLE GOURD VASE

USD 200 - 300

Four-character mark on the bottom to read Yongzheng (of period). H: 11 in.

DR. RAFF'S CANADIAN ART 2 & OTHER ESTATES



8292: ANTIQUE CHINESE BLUE AND WHITE SQUARE VASE

USD 200 - 300

Beautifully painted with blossoming flowers and scrolling leaves all around the vase. Six-character mark on the bottom to read Qianlong.H: 10 3/4 in.



8293: ANTIQUE CHINESE CELADON CRACKLEWARE VASE

USD 300 - 500

With a bulbous body, flanked by a long neck and a flaring mouth. Mark on the bottom.H: 7 in.



8294: ANTIQUE CHINESE YELLOW GROUND DOUBLE GOURD VASE

USD 200 - 300

With a lid. Covered overall in yellow glaze. Five-character mark on the bottom.H: 22 1/2 in.



8295: ANTIQUE CHINESE CELADON CRACKLEWARE VASE

USD 200 - 300

Raised on a short foot, the bulbous body gradually tapered to a long, cylindrical neck. A four-character on the bottom.H: 8 in.



8296: ANTIQUE CHINESE CELADON DOUBLE GOURD VASE

USD 300 - 500

Raised on a short foot, with a four-character mark on the bottom.H: 8 in.



8297: CHINESE ENAMELED PORCELAIN SQUARE VASE

USD 500 - 700

Each side is beautifully painted with different auspicious objects. Eight-character mark on the bottom.H: 13 1/2 in. x W: 6 1/2 in.



8298: CHINESE ENAMELED PORCELAIN VASE

USD 500 - 800

Beautifully painted around the body as well as on the neck with birds and blossoming flowers. Double-ring mark on the bottom.H: 21 1/2 in. x W: 8 in.



8299: CHINESE ENAMELED PORCELAIN VASE

USD 800 - 1,000

Beautifully painted with different figural scenes in various settings on the body as well as on the neck. Flanked by two pierced bamboo-form handles on the neck as handles. Circa 1940s,H: 18 in. x W: 16 in.

DR. RAFF'S CANADIAN ART 2 & OTHER ESTATES



8300: UNUSUAL CHINESE ENAMELED PORCELAIN COVERED VASE

USD 500 - 800

With a lid. Carved with ducks swimming in a lotus pond on the body, against a dark blue background.H: 25 1/2 in. x W: 6 1/2 in.



8301: CHINESE PEACH BLOOM GLAZED JAR WITH LID

USD 200 - 300

Of a bulbous form, flanked by a small finial atop of the lid.H: 10 in. x W: 12 in.



8302: CHINESE ENAMELED PORCELAIN VASE

USD 500 - 800

Beautifully painted with birds and blossoming flowers around the body and on the neck. Flanked by two pierced bamboo-form handles on the neck as handles. Circa 1950s.H: 21 in. x W: 14 1/2 in.



8303: CHINESE GREEN GLAZED PORCELAIN TRIPOD CENSER

USD 300 - 500

Raised on three legs, carved in relief all over the legs and the body. Covered in green glazed. Six-character raised mark on the bottom to read Guangxu.



8304: CHINESE DARK BROWN PORCELAIN PLATE

USD 100 - 200

Carved with some pattern around the rim. Diameter: 9 in.



8305: PAIR OF CHINESE BLUE AND WHITE PORCELAIN SAUCERS

USD 500 - 700

Of a shell-like form, painted with flowers in the center. Four-character mark to read Chenghua on the bottom of each saucer.L: 6 1/2 in.



8306: CHINESE RED AND WHITE VASE

USD 800 - 1,200

Painted on the body with blossoming flowers and scrolling leaves.H: 13 in.



8307: CHINESE DARK BLUE HEXAGONAL LIDDED VASE

USD 300 - 500

Except the bottom, the lidded vase is covered overall in dark blue glaze. Circa 1930s.H: 15 in.
