

Artingstall Auctioneers 1874



DR. RAFF'S COLLECTION OF CANADIAN ART 3

Sunday - June 13, 2021

DR. RAFF'S COLLECTION OF CANADIAN ART 3



8001: BEAUTIFUL GILTWOOD FRAMED KPM PORCELAIN PLAQUE

USD 15,000 - 20,000

Giltwood framed, beautifully painted with children with fruits. KPM mark on the back. With Frame: L: 30 1/2 in. H: 23 in. Without Frame: L: 21 1/4 in. H: 13 1/2 in.



8002: MASSIVE FRAMED OIL PAINTING ON CANVAS BY LEMOS

USD 800 - 1,200

Depicting a seascape scenery of a still ship by the open sea, with four men on a boat rowing towards a cliff, waves crashing on the rocks as a flock of sea gulls fly overhead. Artist's signature, Wm Lemos right bottom corner of the painting. L: 69 1/2 In.(176.5cm) X H: 39 1/2 In.(100.5cm)



8003: OIL PAINTING ON CANVAS OF A CANAL CITY

USD 1,000 - 2,000

Framed, with gondolas by the port assisting passengers. Signed on bottom right which is illegible. H: 36 in. x L: 48 in.



8004: LARGE OIL PAINTING OF A SOIREE IN A THEATRE

USD 7,000 - 10,000

Of a social gathering in a theatre, likely set in the 19th century. Signature to read Rousouy. 6 ft. x 4 ft.



8005: LARGE OIL PAINTING ON CANVAS, STILL LIFE

USD 1,200 - 1,500

In a beautiful giltwood frame. Depicts blossoming flowers and ripe fruits. L: 44 1/2 in. (113cm) x H: 39 in. (99cm) (with frame: L: 57 in. (145cm) x H: 51 1/2 in. (131cm)



8006: FERNELEY RAMUS (1868 - 1937)

USD 800 - 1,000

Depicts a village scene. Signature on bottom right to read F. Ramus, dated 1914. Ferneley Ramus (1868 - 1937) was a prolific painter in both oils and watercolors. H: 9 1/4 in. L: 16 3/4 in.



8007: OIL PAINTING OF A LANDSCAPE BY H. HIENSCH

USD 800 - 1,000

Framed. Depicts a serene scenery under sunset. Signature on bottom right to read H. Hiensch. H: 19 1/2 in. x W: 23 1/2 in.



8008: OIL PAINTING ON CANVAS OF SEASHORE BY H. HIENSCH

USD 700 - 800

Depicts a beautiful scenery next to a beach. Signature on bottom right to read H. Hiensch. H: 19 in. L: 23 in.

DR. RAFF'S COLLECTION OF CANADIAN ART 3



8009: HARENCZY, HUNGARIAN (1878 - 1932)

USD 800 - 1,000

A beautiful oil on canvas painting that depicts a family with their horse carriages resting along a pathway. Signature on bottom left to read Harenczy. L: 31 in. H: 23 1/4 in.



8010: FRANCOIS (CARBUCCIA) CARBU, FRENCH (1896 - UNKNOWN)

USD 600 - 800

Oil on canvas painting depicts a beautiful seashore scene with waves crashing on the beach under moonlight. Signature to on bottom left to read Carbu. Francois (Carbuccia) Carbu, was a French artist who was known for painting of seascapes and boats. H: 21 in. L: 39 in.



8011: PAINTING OF A NAKED MAN WITH HAT BY RUDICK

USD 200 - 300

Framed. A painting that depicts a naked man wearing a hat, and sitting on bench. Signed on lower right to read Rudick '60. With Frame: L: 42 in. H: 55 in. Without Frame (Painting Only): L: 35 1/2 in. H: 47 1/2 in.



8012: A BEAUTIFUL PRINT OF STILL LIFE

USD 200 - 300

A beautiful print-out of depiction of balcony and flowers. Signature on lower right which is illegible. L: 22 1/2 in. H: 29 in.



8013: STANLEY LEWIS, CANADIAN (1930 - 2006)

USD 500 - 700

Lithograph, titled "Victim", numbered 1/30, and pencil signed on bottom right to read Lewis - 62. Stanley Lewis (1930 - 2006) was known for sculpture and printmaking. He was regarded by many as a national treasure in the contemporary art world. During his 56 year international career he created "poetry in stone," and his prolific body of work is an enormous contribution to art and Canadian culture. As a teacher and mentor, his generosity, energetic personality and wealth of knowledge inspired several generations of artists. His work was featured in several exhibitions at key galleries and museums, including the National Academy of Design and the Betty Cuninghame Gallery. L: 24 in. H: 36 in.



8014: SIMON KARCZMAR (1903 - 1982)

USD 800 - 1,000

A painting that depicts an old man and a boy at a dining table. Signed on bottom right to read S. Karczmar. Simon Karczmar (1903 - 1982) was active/ lived in Israel, Russian Federation, and Poland. He was known for painting. The record sold price for this artist in auction is USD \$2,300 for "Here Comes the Bride," which was sold in 2005. Painting Only: L: 13 3/4 in. H: 18 1/4 in.



8015: SIMON KARCZMAR (1903 - 1982)

USD 800 - 1,000

A painting that depicts a man with his dog, walking down on a street. Signed on bottom right to read S. Karczmar. Simon Karczmar (1903 - 1982) was active/ lived in Israel, Russian Federation, and Poland. He was known for painting. The record sold price for this artist in auction is USD \$2,300 for "Here Comes the Bride," which was sold in 2005. Painting Only: L: 14 in. H: 18 in.

DR. RAFF'S COLLECTION OF CANADIAN ART 3



8016: SIMON KARCZMAR (1903 - 1982)

USD 800 - 1,000

A painting that depicts a man reading at a podium. Signed on bottom right to read S. Karczmar. Simon Karczmar (1903 - 1982) was active/ lived in Israel, Russian Federation, and Poland. He was known for painting. The record sold price for this artist in auction is USD \$2,300 for "Here Comes the Bride," which was sold in 2005. Painting Only: L: 13 3/4 in. H: 18 in.



8017: SIMON KARCZMAR (1903 - 1982)

USD 800 - 1,000

A painting that depicts a man riding a donkey and his wife walking behind him, along with two dogs. Signed on bottom right to read S. Karczmar. Simon Karczmar (1903 - 1982) was active/ lived in Israel, Russian Federation, and Poland. He was known for painting. The record sold price for this artist in auction is USD \$2,300 for "Here Comes the Bride," which was sold in 2005. Painting Only: L: 18 in. H: 12 3/4 in. With Mounting: L: 25 1/2 in. H: 20 in.



8018: SIMON KARCZMAR (1903 - 1982)

USD 800 - 1,000

A painting that depicts a blossoming red flower. Signed on bottom right to read S. Karczmar. Simon Karczmar (1903 - 1982) was active/ lived in Israel, Russian Federation, and Poland. He was known for painting. The record sold price for this artist in auction is USD \$2,300 for "Here Comes the Bride," which was sold in 2005. Painting Only: L: 12 1/2 in. H: 18 in. With Mounting: L: 19 1/2 in. H: 25 1/2 in.



8019: SIMON KARCZMAR (1903 - 1982)

USD 800 - 1,000

A painting that depicts blossoming flowers. Signed on bottom right to read S. Karczmar. Simon Karczmar (1903 - 1982) was active/ lived in Israel, Russian Federation, and Poland. He was known for painting. The record sold price for this artist in auction is USD \$2,300 for "Here Comes the Bride," which was sold in 2005. Painting Only: L: 13 in. H: 18 1/2 in. With Mounting: L: 19 1/2 in. H: 25 1/4 in.



8020: DRAWING OF AN OLD MAN'S PORTRAIT BY OPPENHEIM

USD 700 - 900

Framed, a monochromatic drawing of an old man's portrait, signed on top. Carved details around the frame and a carved name to read J. O. Wikson on the bottom right of the frame. Painting Only: L: 9 1/2 in. H: 13 in. With Frame: L: 12 in. H: 15 1/2 in.



8021: FRAMED WATERCOLOR PAINTING OF A CITY SCENE

USD 300 - 500

Framed. A watercolor painting of an European city scene. Signed on bottom right which is illegible. Painting Only: L: 9 3/4 in. H: 15 in. With Frame: L: 17 1/4 in. H: 23 in.



8022: CARTOON DRAWING BY RG

USD 200 - 300

Drawing of a mouse named Niky, chatting with an alien sitting on top of his spaceship. Signed on the right. Titled "Niky Mouse and His Friends..." With a gift note in the center to read "From a bell-boy from Argentine to Dr. Raff and Wife" L: 19 3/4 in. H: 13 in.

DR. RAFF'S COLLECTION OF CANADIAN ART 3



8023: CARTOON DRAWING BY RG

USD 200 - 300

Titled "Niky Mouse and His Friends". Depicts a mouse that overeats cheese, with a rescue by a bee. Signed on lower right to read RG. L: 19 3/4 in. H: 13 in.



8024: CARTOON DRAWING BY RG

USD 200 - 300

Titled "Charlie James The Secret Agent Man." Depicts a man trying to stop another man who's trying to attack him with a sword. Note to read "Dedicated to Dr. Raff" on lower right and signed on the right. L: 19 3/4 in. H: 13 in.



8025: SIMON KARCZMAR (1903 - 1982)

USD 800 - 1,000

Lithograph. Depicts a man carrying two buckets of water. Pencil signed on bottom right to read S. Karczmar, and numbered 13/75. Simon Karczmar (1903 - 1982) was active/ lived in Israel, Russian Federation, and Poland. He was known for painting. The record sold price for this artist in auction is USD \$2,300 for "Here Comes the Bride," which was sold in 2005. L: 12 in. H: 16 in. With Mounting: L: 19 1/2 in. H: 22 1/2 in.



8026: SIMON KARCZMAR (1903 - 1982)

USD 800 - 1,000

Lithograph. Depicts a Jewish man walking down the street with two goats. Pencil signed on bottom right to read S. Karczmar, and numbered 1/50. Simon Karczmar (1903 - 1982) was active/ lived in Israel, Russian Federation, and Poland. He was known for painting. The record sold price for this artist in auction is USD \$2,300 for "Here Comes the Bride," which was sold in 2005. L: 12 in. H: 13 3/4 in. With Mounting: L: 19 3/4 in. H: 22 in.



8027: SIMON KARCZMAR (1903 - 1982)

USD 800 - 1,000

Lithograph, depicts two Jewish men gathering and chatting with each other. Pencil signed on bottom right to read S. Karczmar, and numbered 1/50. Simon Karczmar (1903 - 1982) was active/ lived in Israel, Russian Federation, and Poland. He was known for painting. The record sold price for this artist in auction is USD \$2,300 for "Here Comes the Bride," which was sold in 2005. L: 13 3/4 in. H: 12 in. With Mounting: L: 22 in. H: 19 3/4 in.



8028: SIMON KARCZMAR (1903 - 1982)

USD 800 - 1,000

Lithograph. Depicts a Jewish man. Pencil signed on bottom right to read S. Karczmar, and numbered 1/75. Simon Karczmar (1903 - 1982) was active/ lived in Israel, Russian Federation, and Poland. He was known for painting. The record sold price for this artist in auction is USD \$2,300 for "Here Comes the Bride," which was sold in 2005. L: 12 in. H: 13 3/4 in. With Mounting: L: 19 3/4 in. H: 23 in.



8029: WILLIAM SHOWELL, CANADIAN (1903 - 1984)

USD 100 - 200

Drawing of a building in snow. Signed on bottom right to read Showell 64. William Showell (1903 - 1984) was a Canadian painter, known for landscape, portrait and nude paintings. Painting Only: L: 14 1/4 in. H: 10 in. With Mounting: L: 18 3/4 in. H: 14 3/4 in.

DR. RAFF'S COLLECTION OF CANADIAN ART 3



8030: STANLEY LEWIS, CANADIAN (1930 - 2006)

USD 800 - 1,000

Sculpture, of a sleeping person, on top of a plinth. Carved mark on the plinth to read LEWIS - 60. Stanley Lewis (1930 - 2006) was known for sculpture and printmaking. He was regarded by many as a national treasure in the contemporary art world. During his 56 year international career he created "poetry in stone," and his prolific body of work is an enormous contribution to art and Canadian culture. As a teacher and mentor, his generosity, energetic personality and wealth of knowledge inspired several generations of artists. His work was featured in several exhibitions at key galleries and museums, including the National Academy of Design and the Betty Cuninghame Gallery. L: 17 in. H: 11 in. Depth: 4 1/2 in.



8031: STANLEY LEWIS, CANADIAN (1930 - 2006)

USD 800 - 1,000

Sculpture, of a carved plaque with design for his lithograph works, on top of a marble plinth. Carved mark on the left side on the sculpture to read L - 63. Stanley Lewis (1930 - 2006) was known for sculpture and printmaking. He was regarded by many as a national treasure in the contemporary art world. During his 56 year international career he created "poetry in stone," and his prolific body of work is an enormous contribution to art and Canadian culture. As a teacher and mentor, his generosity, energetic personality and wealth of knowledge inspired several generations of artists. His work was featured in several exhibitions at key galleries and museums, including the National Academy of Design and the Betty Cuninghame Gallery. L: 17 in. H: 12 3/4 in. Depth: 4 1/4 in.



8032: WATERCOLOR DRAWING ON PAPER OF A FACTORY

USD 200 - 300

A watercolor drawing of a factory building. Signed on bottom right which is illegible. L: 13 1/2 in. H: 11 in.



8033: WATERCOLOR PAINTING ON PAPER OF A RURAL SCENE

USD 200 - 300

A beautiful painting on paper of few people nearby an historic building in countryside. Unsigned. L: 14 in. H: 10 in.



8034: OIL LANDSCAPE PAINTING BY DURNBERGER

USD 300 - 500

A beautiful oil on canvas painting of a wooden shed amongst a countryside. Signed on bottom left to read Durnberger. L: 31 in. H: 23 in.



8035: ABSTRACT OIL PAINTING OF WINTER LANDSCAPE

USD 500 - 700

An abstract oil painting that depicts a winter landscape. Unsigned. L: 10 in. H: 45 in.



8036: OIL ON CANVAS PAINTING OF BOATS

USD 500 - 700

An oil painting that depicts boats drifting on a lake which enclosed by snow-covered hills. Unsigned. L: 41 in. H: 30 in.

DR. RAFF'S COLLECTION OF CANADIAN ART 3



8037: MODERN OIL PAINTING OF BLOOMING FLOWERS

USD 300 - 500

A modern oil painting of many colorful, blossoming flowers. Unsigned. L: 60 in. H: 24 in.



8038: OIL PAINTING OF PEOPLE GATHERING

USD 700 - 900

A modern oil painting that depicts a group of people gathering. Unsigned. L: 26 1/2 in. H: 45 in.



8039: OIL PAINTING OF LANDSCAPE

USD 700 - 900

An oil painting that depicts houses amongst mountains. Unsigned. L: 48 in. H: 24 in.



8040: FRAMED PORTRAIT DRAWING OF A YOUNG LADY

USD 500 - 700

Framed. A monochromatic drawing of a portrait of a beautiful young lady. Unsigned. With Frame: L: 19 in. H: 23 in. Without Frame: L: 13 1/2 in. H: 17 1/2 in.



8041: FRAMED PAINTING OF A LADY'S PORTRAIT BY LAWRENCE

USD 700 - 900

Framed, a realistic painting of a lady's portrait. Signed on bottom right to read Lawrence, dated 1973. With Frame: L: 23 1/2 in. H: 28 in. Without Frame: L: 15 1/2 in. H: 19 in.



8042: CHINESE EROTIC FAN FACE PAINTING

USD 500 - 700

A Chinese erotic fan face painting. Inscription on top left. L: 26 in. H: 14 1/2 in.



8043: WILLIAM SHOWELL, CANADIAN (1903 - 1984)

USD 100 - 200

Of a ship docked at a port. Signed on bottom right to read Showell. William Showell (1903 - 1984) was a Canadian painter, known for landscape, portrait and nude paintings. Painting Only: L: 13 1/2 in. H: 8 in. With Mounting: L: 18 in. H: 12 1/2 in.



8044: WILLIAM SHOWELL, CANADIAN (1903 - 1984)

USD 100 - 200

Drawing of the back of a naked lady. Signed on top right to read Showell 64. William Showell (1903 - 1984) was a Canadian painter, known for landscape, portrait and nude paintings. Drawing Only: L: 8 1/2 in. H: 13 1/2 in. With Mounting: L: 12 1/2 in. H: 18 in.

DR. RAFF'S COLLECTION OF CANADIAN ART 3



8045: WILLIAM SHOWELL, CANADIAN (1903 - 1984)

USD 100 - 200

Of a snow covered scene. Signed on lower right to read Showell 64. William Showell (1903 - 1984) was a Canadian painter, known for landscape, portrait and nude paintings. Drawing Only: L: 12 1/2 in. H: 9 1/2 in. With Mounting: L: 17 in. H: 14 1/2 in.



8046: DRAWING OF A STUDY GROUP BY J. WOLBERG

USD 500 - 700

Drawing of a study group with a man and five children. Signed on bottom right to read J. Wolberg. Painting Only: 16 in. H: 12 in.



8047: DRAWING OF A MASS BY J. WOLBERG

USD 500 - 700

Drawing of a group of mass, praying in front of a monument. Signed on bottom left to read J. Wolberg. Painting Only: L: 16 in. H: 12 in.



8048: PAINTING OF A PRAYING GIRL BY J. WOLBERG

USD 500 - 700

Drawing of a young girl lighting up candles for her praying. Signed on bottom right to read J. Wolberg. Painting Only: L: 12 in. H: 16 in.



8049: SIMON KARCZMAR (1903 - 1982)

USD 800 - 1,000

Framed. Drawing of a group of praying men, holding rolls of scriptures. Signed on lower right to read S. Karczmar. Simon Karczmar (1903 - 1982) was active/ lived in Israel, Russian Federation, and Poland. He was known for painting. The record sold price for this artist in auction is USD \$2,300 for "Here Comes the Bride," which was sold in 2005. Painting Only: L: 8 3/4 in. H: 12 3/4 in. With Frame: L: 12 in. H: 16 1/4 in.



8050: SIMON KARCZMAR (1903 - 1982)

USD 800 - 1,000

Drawing of two men. Signed on bottom right to read S. Karczmar. Simon Karczmar (1903 - 1982) was active/ lived in Israel, Russian Federation, and Poland. He was known for painting. The record sold price for this artist in auction is USD \$2,300 for "Here Comes the Bride," which was sold in 2005. Painting Only: L: 14 in. H: 18 in.



8051: A PRINTED CALENDAR PAGE OF JANUARY 1904

USD 200 - 300

A beautiful printed calendar page of January 1904, with a printed advertisement on top of a law office. L: 6 in. H: 10 1/2 in.

DR. RAFF'S COLLECTION OF CANADIAN ART 3



8052: MARIE-ALEXANDRE ALOPHE, FRENCH (1812 - 1883)

USD 500 - 700

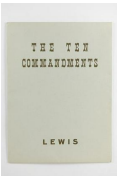
Pencil drawing of a noble man pointing at a ship. Signed on lower left to read M. Alophe. Marie-Alexandre Alophe was a French artist who was known for painting. L: 7 1/2 in. H: 9 3/4 in.



8053: COMIC STRIP BY LIOZU

USD 300 - 500

A comic strip of two men, signed on lower right to read Liozu. L: 12 in. H: 9 1/2 in.



8054: STANLEY LEWIS, CANADIAN (1930 - 2006)

USD 800 - 1,000

A portfolio of lithographs, titled "The Ten Commandments," Edition No. 57. Consisting of illustrations of The Ten Commandments that were done by Lewis, printed in Israel. Each illustration is numbered and signed on the bottom. Total of 17 pages. Stanley Lewis (1930 - 2006) was known for sculpture and printmaking. He was regarded by many as a national treasure in the contemporary art world. During his 56 year international career he created "poetry in stone," and his prolific body of work is an enormous contribution to art and Canadian culture. As a teacher and mentor, his generosity, energetic personality and wealth of knowledge inspired several generations of artists. His work was featured in several exhibitions at key galleries and museums, including the National Academy of Design and the Betty Cuninghame Gallery. L: 11 1/2 in. H: 15 1/2 in.



8055: BEAUTIFUL DRAWING OF AN ELEGANT LADY

USD 300 - 500

Depicts a beautiful, elegant lady in an emerald green gown, holding a wide brimmed hat. Signed on bottom right which is illegible. L: 14 in. H: 18 in.



8056: DRAWING OF TWO BEAUTIES BY A LAKE

USD 200 - 300

A drawing on paper that depicts two beautiful ladies resting next to a lake. Signed on bottom right which is illegible. L: 17 in. H: 21 1/2 in.



8057: CARTOON DRAWING BY RG

USD 200 - 300

A cartoon drawing of four different animal characters, Signed on the right. L: 19 in. H: 12 1/2 in.



8058: WILLIAM SHOWELL, CANADIAN (1903 - 1984)

USD 100 - 200

Drawing on paper of a naked, sleeping lady. Signed on lower right to read William Showell 66. William Showell (1903 - 1984) was a Canadian painter, known for landscape, portrait and nude paintings. L: 25 in. H: 20 in.

DR. RAFF'S COLLECTION OF CANADIAN ART 3



8059: WILLIAM SHOWELL, CANADIAN (1903 - 1984)

USD 100 - 200

Drawing of a lady with long hair, dressing in a pink dress, sitting on a chair. Signed on lower right to read William Showell. William Showell (1903 - 1984) was a Canadian painter, known for landscape, portrait and nude paintings. L: 20 in. H: 25 in.



8060: WILLIAM SHOWELL, CANADIAN (1903 - 1984)

USD 100 - 200

A sketch drawing of a lady painting. Signed on bottom to read William Showell. William Showell (1903 - 1984) was a Canadian painter, known for landscape, portrait and nude paintings. L: 20 in. H: 25 in.



8061: WILLIAM SHOWELL, CANADIAN (1903 - 1984)

USD 100 - 200

Drawing on paper of a naked lady. Signed on the bottom to read William Showell. William Showell (1903 - 1984) was a Canadian painter, known for landscape, portrait and nude paintings. L: 20 in. H: 25 in.



8062: WILLIAM SHOWELL, CANADIAN (1903 - 1984)

USD 100 - 200

A rough sketch of a leg. Signed lower right to read William Showell. William Showell (1903 - 1984) was a Canadian painter, known for landscape, portrait and nude paintings. L: 20 in. H: 25 in.



8063: WILLIAM SHOWELL, CANADIAN (1903 - 1984)

USD 100 - 200

A drawing of the back of a naked lady. Signed on lower right to read William Showell. William Showell (1903 - 1984) was a Canadian painter, known for landscape, portrait and nude paintings. L: 25 in. H: 20 in.



8064: WILLIAM SHOWELL, CANADIAN (1903 - 1984)

USD 100 - 200

A sketch drawing of a naked lady. Signed on bottom to read William Showell. William Showell (1903 - 1984) was a Canadian painter, known for landscape, portrait and nude paintings. L: 25 in. H: 20 in.



8065: WILLIAM SHOWELL, CANADIAN (1903 - 1984)

USD 100 - 200

A sketch drawing and study of different body shapes. Signed on the lower center to read William Showell. William Showell (1903 - 1984) was a Canadian painter, known for landscape, portrait and nude paintings. L: 25 in. H: 20 in.



8066: WILLIAM SHOWELL, CANADIAN (1903 - 1984)

USD 100 - 200

A sketch drawing of a naked lady and a foot. Signed on lower right to read William Showell. William Showell (1903 - 1984) was a Canadian painter, known for landscape, portrait and nude paintings. L: 20 in. H: 25 in.

DR. RAFF'S COLLECTION OF CANADIAN ART 3



8067: WILLIAM SHOWELL, CANADIAN (1903 - 1984)

USD 100 - 200

A sketch of a naked lady. Signed on lower right to read William Showell. William Showell (1903 - 1984) was a Canadian painter, known for landscape, portrait and nude paintings. L: 25 in. H: 20 in.



8068: WILLIAM SHOWELL, CANADIAN (1903 - 1984)

USD 100 - 200

A sketch of a lady. Signed on lower center to read William Showell. William Showell (1903 - 1984) was a Canadian painter, known for landscape, portrait and nude paintings. L: 20 in. H: 25 in.



8069: WILLIAM SHOWELL, CANADIAN (1903 - 1984)

USD 100 - 200

A sketch of a lady. Signed on lower right to read William Showell. William Showell (1903 - 1984) was a Canadian painter, known for landscape, portrait and nude paintings. L: 20 in. H: 25 in.



8070: WILLIAM SHOWELL, CANADIAN (1903 - 1984)

USD 100 - 200

A sketch of a lady's profile. Signed to read William Showell. William Showell (1903 - 1984) was a Canadian painter, known for landscape, portrait and nude paintings. L: 20 in. H: 25 in.



8071: WILLIAM SHOWELL, CANADIAN (1903 - 1984)

USD 100 - 200

A sketch of a sleeping cat. Signed to read William Showell. William Showell (1903 - 1984) was a Canadian painter, known for landscape, portrait and nude paintings. L: 25 in. H: 20 in.



8072: WILLIAM SHOWELL, CANADIAN (1903 - 1984)

USD 100 - 200

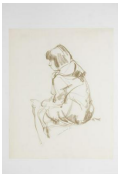
A sketch of a naked lady. Signed to read William Showell. William Showell (1903 - 1984) was a Canadian painter, known for landscape, portrait and nude paintings. L: 20 in. H: 25 in.



8073: WILLIAM SHOWELL, CANADIAN (1903 - 1984)

USD 100 - 200

A sketch of a lady. Signed to read William Showell. William Showell (1903 - 1984) was a Canadian painter, known for landscape, portrait and nude paintings. L: 20 in. H: 25 in.



8074: WILLIAM SHOWELL, CANADIAN (1903 - 1984)

USD 100 - 200

A sketch drawing of a girl. Signed to read William Showell. William Showell (1903 - 1984) was a Canadian painter, known for landscape, portrait and nude paintings. L: 20 in. H: 25 in.

DR. RAFF'S COLLECTION OF CANADIAN ART 3



8075: WILLIAM SHOWELL, CANADIAN (1903 - 1984)

USD 100 - 200

A sketch drawing of a lady sitting on a stool and contemplating. Signed to read William Showell. William Showell (1903 - 1984) was a Canadian painter, known for landscape, portrait and nude paintings. L: 25 in. H: 20 in.



8076: WILLIAM SHOWELL, CANADIAN (1903 - 1984)

USD 100 - 200

A sketch drawing of two ladies. Signed to read William Showell. William Showell (1903 - 1984) was a Canadian painter, known for landscape, portrait and nude paintings. L: 20 in. H: 25 in.



8077: WILLIAM SHOWELL, CANADIAN (1903 - 1984)

USD 100 - 200

A sketch drawing of a lady. Signed to read William Showell. William Showell (1903 - 1984) was a Canadian painter, known for landscape, portrait and nude paintings. L: 20 in. H: 25 in.



8078: WILLIAM SHOWELL, CANADIAN (1903 - 1984)

USD 100 - 200

A sketch of a person. Signed to read William Showell. William Showell (1903 - 1984) was a Canadian painter, known for landscape, portrait and nude paintings. L: 25 in. H: 20 in.



8079: WILLIAM SHOWELL, CANADIAN (1903 - 1984)

USD 100 - 200

A sketch of a lady. Signed to read William Showell. William Showell (1903 - 1984) was a Canadian painter, known for landscape, portrait and nude paintings. L: 20 in. H: 25 in.



8080: WILLIAM SHOWELL, CANADIAN (1903 - 1984)

USD 100 - 200

A sketch of a naked lady. Signed to read William Showell. William Showell (1903 - 1984) was a Canadian painter, known for landscape, portrait and nude paintings. L: 20 in. H: 25 in.



8081: WILLIAM SHOWELL, CANADIAN (1903 - 1984)

USD 100 - 200

A sketch drawing of a lady. Signed to read William Showell. William Showell (1903 - 1984) was a Canadian painter, known for landscape, portrait and nude paintings. L: 20 in. H: 25 in.



8082: WILLIAM SHOWELL, CANADIAN (1903 - 1984)

USD 100 - 200

A sketch drawing of a lady. Signed to read William Showell. William Showell (1903 - 1984) was a Canadian painter, known for landscape, portrait and nude paintings. L: 20 in. H: 25 in.

DR. RAFF'S COLLECTION OF CANADIAN ART 3



8083: WILLIAM SHOWELL, CANADIAN (1903 - 1984)

USD 100 - 200

A sketch of a nude lady's head and body. Signed to read William Showell. William Showell (1903 - 1984) was a Canadian painter, known for landscape, portrait and nude paintings. L: 25 in. H: 20 in.



8084: WILLIAM SHOWELL, CANADIAN (1903 - 1984)

USD 100 - 200

A sketch drawing of a naked lady. Signed to read William Showell. William Showell (1903 - 1984) was a Canadian painter, known for landscape, portrait and nude paintings. L: 18 in. H: 24 in.



8085: WILLIAM SHOWELL, CANADIAN (1903 - 1984)

USD 100 - 200

A sketch drawing of a naked lady. Signed to read William Showell. William Showell (1903 - 1984) was a Canadian painter, known for landscape, portrait and nude paintings. L: 24 in. H: 18 in.



8086: WILLIAM SHOWELL, CANADIAN (1903 - 1984)

USD 100 - 200

A sketch drawing of a naked lady. Signed to read William Showell. William Showell (1903 - 1984) was a Canadian painter, known for landscape, portrait and nude paintings. L: 18 in. H: 24 in.



8087: WILLIAM SHOWELL, CANADIAN (1903 - 1984)

USD 100 - 200

A sketch of a naked lady. Signed to read William Showell. William Showell (1903 - 1984) was a Canadian painter, known for landscape, portrait and nude paintings. L: 24 in. H: 18 in.



8088: WILLIAM SHOWELL, CANADIAN (1903 - 1984)

USD 100 - 200

A drawing of a girl. Signed to read William Showell. William Showell (1903 - 1984) was a Canadian painter, known for landscape, portrait and nude paintings. L: 18 in. H: 24 in.



8089: WILLIAM SHOWELL, CANADIAN (1903 - 1984)

USD 100 - 200

A sketch of an artist painting. Signed to read William Showell. William Showell (1903 - 1984) was a Canadian painter, known for landscape, portrait and nude paintings. L: 18 in. H: 24 in.



8090: WILLIAM SHOWELL, CANADIAN (1903 - 1984)

USD 100 - 200

A drawing of an old man. Signed to read William Showell. William Showell (1903 - 1984) was a Canadian painter, known for landscape, portrait and nude paintings. L: 18 in. H: 24 in.

DR. RAFF'S COLLECTION OF CANADIAN ART 3



8091: WILLIAM SHOWELL, CANADIAN (1903 - 1984)

USD 100 - 200

A drawing of a resting lady. Signed to read William Showell. William Showell (1903 - 1984) was a Canadian painter, known for landscape, portrait and nude paintings. L: 18 in. H: 24 in.



8092: WILLIAM SHOWELL, CANADIAN (1903 - 1984)

USD 100 - 200

A drawing of a lady. Signed to read William Showell. William Showell (1903 - 1984) was a Canadian painter, known for landscape, portrait and nude paintings. L: 18 in. H: 24 in.



8093: WILLIAM SHOWELL, CANADIAN (1903 - 1984)

USD 100 - 200

A drawing of a sleeping lady. Signed to read William Showell. William Showell (1903 - 1984) was a Canadian painter, known for landscape, portrait and nude paintings. L: 28 in. H: 24 in.



8094: WILLIAM SHOWELL, CANADIAN (1903 - 1984)

USD 100 - 200

A sketch drawing of a lady. Signed to read William Showell. William Showell (1903 - 1984) was a Canadian painter, known for landscape, portrait and nude paintings. L: 18 in. H: 24 in.



8095: WILLIAM SHOWELL, CANADIAN (1903 - 1984)

USD 100 - 200

A drawing of a lady's profile. Signed to read William Showell. William Showell (1903 - 1984) was a Canadian painter, known for landscape, portrait and nude paintings. L: 28 in. H: 24 in.



8096: WILLIAM SHOWELL, CANADIAN (1903 - 1984)

USD 100 - 200

A sketch drawing of a naked lady. Signed to read William Showell. William Showell (1903 - 1984) was a Canadian painter, known for landscape, portrait and nude paintings. L: 18 in. H: 24 in.



8097: WILLIAM SHOWELL, CANADIAN (1903 - 1984)

USD 100 - 200

A sketch drawing of a mother and a daughter. Signed to read William Showell. William Showell (1903 - 1984) was a Canadian painter, known for landscape, portrait and nude paintings. L: 18 in. H: 12 in.



8098: WILLIAM SHOWELL, CANADIAN (1903 - 1984)

USD 100 - 200

A sketch of two ladies and four children, with different body shapes. Signed to read William Showell. William Showell (1903 - 1984) was a Canadian painter, known for landscape, portrait and nude paintings. L: 18 in. H: 12 in.

DR. RAFF'S COLLECTION OF CANADIAN ART 3



8099: WILLIAM SHOWELL, CANADIAN (1903 - 1984)

USD 100 - 200

A sketch drawing of different figures. Signed to read William Showell. William Showell (1903 - 1984) was a Canadian painter, known for landscape, portrait and nude paintings. L: 18 in. H: 12 in.



8100: WILLIAM SHOWELL, CANADIAN (1903 - 1984)

USD 100 - 200

A sketch drawing of a man's portrait. Signed to read William Showell. William Showell (1903 - 1984) was a Canadian painter, known for landscape, portrait and nude paintings. L: 16 in. H: 18 in.



8101: WILLIAM SHOWELL, CANADIAN (1903 - 1984)

USD 100 - 200

A sketch of a naked lady. Signed to read William Showell. William Showell (1903 - 1984) was a Canadian painter, known for landscape, portrait and nude paintings. L: 12 in. H: 9 in.



8102: WILLIAM SHOWELL, CANADIAN (1903 - 1984)

USD 100 - 200

A sketch of a naked lady. Signed to read William Showell. William Showell (1903 - 1984) was a Canadian painter, known for landscape, portrait and nude paintings. L: 12 in. H: 9 in.



8103: WILLIAM SHOWELL, CANADIAN (1903 - 1984)

USD 100 - 200

A sketch of a lady's portrait who's wearing a headscarf. Signed to read William Showell. William Showell (1903 - 1984) was a Canadian painter, known for landscape, portrait and nude paintings. L: 9 in. H: 12 in.



8104: WILLIAM SHOWELL, CANADIAN (1903 - 1984)

USD 100 - 200

A sketch of a naked lady. Signed to read William Showell. William Showell (1903 - 1984) was a Canadian painter, known for landscape, portrait and nude paintings. L: 12 in. H: 9 in.



8105: WILLIAM SHOWELL, CANADIAN (1903 - 1984)

USD 100 - 200

A sketch of a boy's portrait. Signed to read William Showell. William Showell (1903 - 1984) was a Canadian painter, known for landscape, portrait and nude paintings. L: 7 1/2 in. H: 10 in.



8106: WILLIAM SHOWELL, CANADIAN (1903 - 1984)

USD 100 - 200

A sketch of a mischievous young boy. Signed to read William Showell. William Showell (1903 - 1984) was a Canadian painter, known for landscape, portrait and nude paintings. L: 7 1/2 in. H: 10 in.

DR. RAFF'S COLLECTION OF CANADIAN ART 3



8107: WILLIAM SHOWELL, CANADIAN (1903 - 1984)

USD 100 - 200

A sketch of a young girl's portrait. Signed to read William Showell. William Showell (1903 - 1984) was a Canadian painter, known for landscape, portrait and nude paintings. L: 7 1/2 in. H: 10 in.



8108: WILLIAM SHOWELL, CANADIAN (1903 - 1984)

USD 100 - 200

A sketch of a contemplating young boy. Signed to read William Showell. William Showell (1903 - 1984) was a Canadian painter, known for landscape, portrait and nude paintings. L: 7 1/2 in. H: 10 in.



8109: WILLIAM SHOWELL, CANADIAN (1903 - 1984)

USD 100 - 200

A sketch drawing of a growing kid. Signed to read William Showell. William Showell (1903 - 1984) was a Canadian painter, known for landscape, portrait and nude paintings. L: 7 1/2 in. H: 10 in.



8110: WILLIAM SHOWELL, CANADIAN (1903 - 1984)

USD 100 - 200

A sketch of a sulking child. Signed to read William Showell. William Showell (1903 - 1984) was a Canadian painter, known for landscape, portrait and nude paintings. L: 10 in. H: 7 1/2 in.



8111: WILLIAM SHOWELL, CANADIAN (1903 - 1984)

USD 100 - 200

A sketch drawing of a young boy. Signed to read William Showell. William Showell (1903 - 1984) was a Canadian painter, known for landscape, portrait and nude paintings. L: 7 1/2 in. H: 10 in.



8112: WILLIAM SHOWELL, CANADIAN (1903 - 1984)

USD 100 - 200

A sketch of the back of a naked lady. Signed to read William Showell. William Showell (1903 - 1984) was a Canadian painter, known for landscape, portrait and nude paintings. L: 7 1/2 in. H: 10 in.



8113: WILLIAM SHOWELL, CANADIAN (1903 - 1984)

USD 100 - 200

A sketch of a naked lady. Signed to read William Showell. William Showell (1903 - 1984) was a Canadian painter, known for landscape, portrait and nude paintings. L: 10 in. H: 7 1/2 in.



8114: WILLIAM SHOWELL, CANADIAN (1903 - 1984)

USD 100 - 200

A sketch of the back of a naked lady. Signed to read William Showell. William Showell (1903 - 1984) was a Canadian painter, known for landscape, portrait and nude paintings. L: 7 1/2 in. H: 10 in.

DR. RAFF'S COLLECTION OF CANADIAN ART 3



8115: WILLIAM SHOWELL, CANADIAN (1903 - 1984)

USD 100 - 200

A sketch of a naked lady's body. Signed to read William Showell. William Showell (1903 - 1984) was a Canadian painter, known for landscape, portrait and nude paintings. L: 10 in. H: 7 1/2 in.



8116: WILLIAM SHOWELL, CANADIAN (1903 - 1984)

USD 100 - 200

A sketch of a naked lady. Signed to read William Showell. William Showell (1903 - 1984) was a Canadian painter, known for landscape, portrait and nude paintings. L: 7 1/2 in. H: 10 in.



8117: WILLIAM SHOWELL, CANADIAN (1903 - 1984)

USD 100 - 200

A sketch of a naked lady. Signed to read William Showell. William Showell (1903 - 1984) was a Canadian painter, known for landscape, portrait and nude paintings. L: 7 1/2 in. H: 10 in.



8118: WILLIAM SHOWELL, CANADIAN (1903 - 1984)

USD 100 - 200

A sketch of a naked lady. Signed to read William Showell. William Showell (1903 - 1984) was a Canadian painter, known for landscape, portrait and nude paintings. L: 7 1/2 in. H: 10 in.



8119: WILLIAM SHOWELL, CANADIAN (1903 - 1984)

USD 100 - 200

A sketch of a naked lady. Signed to read William Showell. William Showell (1903 - 1984) was a Canadian painter, known for landscape, portrait and nude paintings. L: 7 1/2 in. H: 10 in.



8120: WILLIAM SHOWELL, CANADIAN (1903 - 1984)

USD 100 - 200

A sketch of an arm, a naked man, a young girl and a lady. Signed to read William Showell. William Showell (1903 - 1984) was a Canadian painter, known for landscape, portrait and nude paintings. L: 7 1/2 in. H: 10 in.



8121: DRAWING OF TWO OLD MEN BY SHLOSSBERG

USD 300 - 500

A drawing on paper of two old men reading together. Signed on lower right to read Shlossberg. L: 18 1/2 in. H: 12 in.



8122: DRAWING OF A MAN BY SHLOSSBERG

USD 300 - 500

Drawing of a man with beard and wearing a hat. Signed on lower right to read Shlossberg. L: 12 in. H: 18 1/2 in.

DR. RAFF'S COLLECTION OF CANADIAN ART 3



8123: DRAWING OF AN OLD MAN BY SHLOSSBERG

USD 300 - 500

A drawing on paper of an old men with glasses and turban reading. Signed to read Shlossberg.L: 12 in. H: 18 1/2 in.



8124: DRAWING OF A MAN BY SHLOSSBERG

USD 300 - 500

Drawing on paper of a man with a wide brimmed hat. Signed to read Shlossberg.L: 12 in. H: 18 1/2 in.



8125: DRAWING OF AN OLD MAN SMOKING BY SHLOSSBERG

USD 300 - 500

A drawing on paper of an old man smoking a pipe. Signed to read Shlossberg on lower right.L: 12 in. H: 18 3/4 in.



8126: DRAWING OF A CHILD WITH BABY GOAT BY SHLOSSBERG

USD 300 - 500

A drawing on paper of a young child holding a baby goat. Signed on bottom to read Shlossberg.L: 12 in. H: 18 3/4 in.



8127: DRAWING OF AN OLD MAN BY SHLOSSBERG

USD 300 - 500

A drawing on paper of an old man. Signed on lower right to read Shlossberg.L: 12 in. H: 18 1/2 in.



8128: DRAWING OF DR. RAFF BY SHLOSSBERG

USD 300 - 500

A drawing on paper of Dr. Raff's portrait. Signed on lower right to read Shlossberg.L: 12 in. H: 18 1/2 in.



8129: DRAWING OF AN EXOTIC WOMAN BY SHLOSSBERG

USD 300 - 500

A drawing on paper of an exotic woman. Signed on lower right to read Shlossberg.L: 12 in. H: 18 1/2 in.



8130: DRAWING OF AN EXOTIC LADY BY SHLOSSBERG

USD 300 - 500

A drawing on paper of an exotic lady with an unique hairpiece and hairstyle. Signed on lower right to read Shlossberg.L: 12 in. H: 18 1/2 in.

DR. RAFF'S COLLECTION OF CANADIAN ART 3



8131: DRAWING OF HANDS BY SHLOSSBERG

USD 300 - 500

A drawing of two connecting hands. Signed to read Shlossberg. L: 18 1/2 in. H: 12 in.



8132: DRAWING OF A MOTHER AND A DAUGHTER BY SHLOSSBERG

USD 300 - 500

A drawing on paper of a daughter and a mother, embracing each other. Signed on lower right to read Shlossberg. L: 12 in. H: 18 1/2 in.



8133: DRAWING OF A LADY BY SHLOSSBERG

USD 300 - 500

A drawing on paper of a lady wearing a beanie and winter clothing. Signed on lower left to read Shlossberg. L: 12 in. H: 18 1/2 in.



8134: DRAWING OF THREE CHILDREN BY SHLOSSBERG

USD 300 - 500

A drawing on paper of three children who are all wearing hats. Signed on lower right to read Shlossberg. L: 18 1/2 in. H: 12 in.



8135: DRAWING OF AN OLD MAN BY SHLOSSBERG

USD 300 - 500

A drawing on paper of an old man threading a needle. Signed on lower left to read Shlossberg. L: 18 1/2 in. H: 12 in.



8136: DRAWING OF AN OLD MAN BY SHLOSSBERG

USD 300 - 500

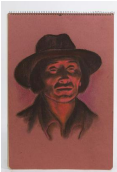
A drawing of an old man writing. Signed to read Shlossberg. L: 18 1/2 in. H: 12 in.



8137: DRAWING OF DR. RAFF BY SHLOSSBERG

USD 300 - 500

A drawing of Dr. Raff's portrait. L: 12 in. H: 18 1/2 in.



8138: DRAWING OF AN OMINOUS LADY BY SHLOSSBERG

USD 300 - 500

A drawing of an ominous looking lady with a wide brimmed hat. L: 12 in. H: 18 1/2 in.

DR. RAFF'S COLLECTION OF CANADIAN ART 3



8139: DRAWING OF A GIRL BY SHLOSSBERG

USD 300 - 500

A drawing of a girl with long, dark hair. Signed on lower right to read Shlossberg. L: 12 in. H: 18 1/2 in.



8140: DRAWING OF AN EXOTIC GIRL BY SHLOSSBERG

USD 300 - 500

A drawing of a girl with bright-colored clothing. L: 12 in. H: 18 1/2 in.



8141: TWO DRAWINGS BY J. WOLBERG

USD 700 - 900

One is a drawing that depicts a studying class; another one depicts a group of refugees behind wires. One is signed on bottom left to read J. Wolberg. Drawing Only: L: 11 3/4 in. H: 7 3/4 in. With Border: L: 16 in. H: 12 1/4 in.



8142: DRAWING OF THREE MUSICIANS BY J. WOLBERG

USD 500 - 700

A drawing that depicts three musicians. Signed on bottom right to read J. Wolberg. Drawing Only: L: 8 1/2 in. H: 11 in. With Border: L: 12 in. H: 16 in.



8143: DRAWING OF A FAMILY BY J. WOLBERG

USD 300 - 500

Signed on bottom left to read J. Wolberg. Drawing Only: L: 10 3/4 in. H: 7 1/2 in. With Border: L: 15 1/4 in. H: 11 in.



8144: DRAWING OF A MAN SEWING BY J. WOLBERG

USD 300 - 500

Signed on bottom right to read J. Wolberg. Drawing Only: L: 11 1/4 in. H: 9 1/2 in. With Border: L: 16 1/4 in. H: 13 1/2 in.



8145: DRAWING OF A MAN BY J. WOLBERG

USD 300 - 500

A drawing that depicts a man carrying two buckets of water. Signed on bottom right to read J. Wolberg. Drawing Only: L: 9 in. H: 12 in. With Border: L: 12 in. H: 16 1/4 in.



8146: DRAWING OF A MAN WITH HIS GOAT BY J. WOLBERG

USD 300 - 500

A drawing that depicts a man in long coat walking with his goat which is on leash. Signed on bottom right to read J. Wolberg. Drawing Only: L: 14 1/2 in. H: 10 in. With Border: L: 20 in. H: 16 in.

DR. RAFF'S COLLECTION OF CANADIAN ART 3



8147: DRAWING OF A MAN READING BY J. WOLBERG

USD 300 - 500

A drawing that depicts a man reading. Signed on bottom left to read J. Wolberg. Drawing Only: L: 10 3/4 in. H: 8 1/4 in. With Border: L: 12 in. H: 16 in.



8148: DRAWING OF TRAVELLERS BY J. WOLBERG

USD 300 - 500

Signed on bottom right to read J. Wolberg. Drawing Only: L: 12 1/4 in. H: 9 1/2 in. With Border: L: 16 in. H: 12 in.



8149: DRAWING OF THREE MUSICIANS BY J. WOLBERG

USD 300 - 500

Signed on bottom left to read J. Wolberg. Drawing Only: L: 9 in. H: 12 in. With Border: L: 12 in. H: 16 in.



8150: DRAWING OF READING GROUP BY J. WOLBERG

USD 300 - 500

Signed on bottom right to read J. Wolberg. Drawing Only: L: 10 in. H: 8 in. With Border: L: 16 in. H: 12 in.



8151: DRAWING OF THREE DANCING MEN BY J. WOLBERG

USD 500 - 700

Signed on bottom right to read J. Wolberg. Drawing Only: L: 10 in. H: 7 3/4 in. With Border: L: 16 in. H: 12 in.



8152: DRAWING OF THREE MUSICIANS BY J. WOLBERG

USD 300 - 500

Signed on bottom left to read J. Wolberg. Drawing Only: L: 10 3/4 in. H: 9 1/4 in. With Border: L: 16 in. H: 12 in.



8153: DRAWING OF THREE MEN BY J. WOLBERG

USD 300 - 500

A drawing of three men walking down a street. Signed on bottom right to read J. Wolberg. Drawing Only: L: 8 1/4 in. H: 11 1/4 in. With Border: L: 12 in. H: 16 1/4 in.



8154: DRAWING OF A PRAYING MASS BY J. WOLBERG

USD 300 - 500

Signed on bottom left to read J. Wolberg. Drawing Only: L: 8 3/4 in. H: 11 1/4 in. With Border: L: 12 in. H: 16 in.

DR. RAFF'S COLLECTION OF CANADIAN ART 3



8155: DRAWING OF TWO MUSICIANS BY J. WOLBERG

USD 500 - 700

Signed on bottom right to read J. Wolberg. Drawing Only: L: 12 in. H: 16 in. With Border: L: 16 in. H: 20 in.



8156: DRAWING OF A PARTY BY J. WOLBERG

USD 300 - 500

A drawing that depicts a group of people dancing and playing music at a party. Signed on bottom right to read J. Wolberg. Drawing Only: L: 14 3/4 in. H: 12 1/4 in. With Border: L: 18 1/2 in. H: 16 1/4 in.



8157: DRAWING OF A LADY'S PORTRAIT BY J. WOLBERG

USD 300 - 500

A sketch of a lady's portrait. Signed on bottom right to read J. Wolberg. Drawing Only: L: 5 in. H: 6 1/4 in. With Border: L: 10 in. H: 13 1/4 in.



8158: DRAWING OF A MAN'S PORTRAIT BY J. WOLBERG

USD 300 - 500

A drawing of a man's portrait. Signed on bottom right to read J. Wolberg. Drawing Only: L: 5 in. H: 6 1/4 in. With Mounting: L: 8 in. H: 11 in.



8159: DRAWING OF A TREE BY J. WOLBERG

USD 300 - 500

Signed on bottom left to read J. Wolberg. Drawing Only: L: 12 in. H: 9 in.



8160: A SELF PORTRAIT BY J. WOLBERG

USD 300 - 500

A drawing of the artist himself. Signed on bottom left to read J. Wolberg. Drawing Only: L: 9 in. H: 12 in.



8161: DRAWING OF TWO MUSICIANS BY J. WOLBERG

USD 300 - 500

Signed on bottom right to read J. Wolberg. Drawing Only: L: 14 in. H: 17 in.



8162: SIMON KARCZMAR (1903 - 1982)

USD 800 - 1,000

Lithograph, of three musicians. Pencil signed on bottom right to read S. Karczmar, and numbered 1/50. Simon Karczmar (1903 - 1982) was active/ lived in Israel, Russian Federation, and Poland. He was known for painting. The record sold price for this artist in auction is USD \$2,300 for "Here Comes the Bride," which was sold in 2005. Lithograph Only: L: 12 in. H: 14 in.

DR. RAFF'S COLLECTION OF CANADIAN ART 3



8163: DOUBLE-SIDED DRAWINGS BY J. WOLBERG

USD 500 - 700

One side depicts a cellist, signed on bottom left; the other side depicts a man reading, signed on bottom right to read J. Wolberg. L: 8 1/2 in. H: 11 1/2 in.



8164: DRAWING OF A MAN'S PORTRAIT BY J. WOLBERG

USD 300 - 500

Signed on bottom right to read J. Wolberg. L: 9 1/4 in. H: 12 in.



8165: SKETCH DRAWING OF A MAN BY J. WOLBERG

USD 300 - 500

A sketch of a man carrying two buckets of water. Signed on bottom right to read J. Wolberg. L: 11 3/4 in. H: 9 in.



8166: DRAWING OF A MAN'S PORTRAIT BY J. WOLBERG

USD 300 - 500

A sketch drawing of a contemplating man. Signed on bottom right to read J. Wolberg. L: 9 in. H: 12 in.



8167: DRAWING OF THREE MEN DANCING BY J. WOLBERG

USD 300 - 500

Signed on bottom right to read J. Wolberg. L: 8 1/2 in. H: 11 in.



8168: DRAWING OF AN OLD MAN BY J. WOLBERG

USD 300 - 500

A drawing that depicts an old man reading. Signed on bottom to read J. Wolberg. L: 5 1/2 in. H: 7 3/4 in.



8169: A DRAWN ADVERTISING SIGN BY J. WOLBERG

USD 700 - 900

A self-promotional sign to read "Original Paintings by J. Wolberg of Buenos Aires". L: 16 1/4 in. H: 4 1/2 in.



8170: WILLIAM SHOWELL, CANADIAN (1903 - 1984)

USD 100 - 200

Sketch of a village covered in snow. Signed to read William Showell. William Showell (1903 - 1984) was a Canadian painter, known for landscape, portrait and nude paintings. L: 10 in. H: 7 1/2 in.

DR. RAFF'S COLLECTION OF CANADIAN ART 3



8171: WILLIAM SHOWELL, CANADIAN (1903 - 1984)

USD 100 - 200

Sketch of a port, and some boats. Signed to read William Showell. William Showell (1903 - 1984) was a Canadian painter, known for landscape, portrait and nude paintings. L: 10 in. H: 7 1/2 in.



8172: WILLIAM SHOWELL, CANADIAN (1903 - 1984)

USD 100 - 200

Sketch of a building. Signed to read William Showell. William Showell (1903 - 1984) was a Canadian painter, known for landscape, portrait and nude paintings. L: 10 in. H: 7 1/2 in.



8173: WILLIAM SHOWELL, CANADIAN (1903 - 1984)

USD 100 - 200

Various sketches of hand gestures. Signed to read William Showell. William Showell (1903 - 1984) was a Canadian painter, known for landscape, portrait and nude paintings. L: 7 1/2 in. H: 10 in.



8174: WILLIAM SHOWELL, CANADIAN (1903 - 1984)

USD 100 - 200

Sketch of naked lady. Signed to read William Showell. William Showell (1903 - 1984) was a Canadian painter, known for landscape, portrait and nude paintings. L: 10 3/4 in. H: 8 1/2 in.



8175: WILLIAM SHOWELL, CANADIAN (1903 - 1984)

USD 100 - 200

Sketch of a naked lady. Signed to read William Showell. William Showell (1903 - 1984) was a Canadian painter, known for landscape, portrait and nude paintings. L: 8 1/2 in. H: 10 3/4 in.



8176: WILLIAM SHOWELL, CANADIAN (1903 - 1984)

USD 100 - 200

Sketch of a pregnant woman seated. Signed to read William Showell. William Showell (1903 - 1984) was a Canadian painter, known for landscape, portrait and nude paintings. L: 10 3/4 in. H: 8 1/2 in.



8177: WILLIAM SHOWELL, CANADIAN (1903 - 1984)

USD 100 - 200

Sketch of a lush park and people having a picnic. Signed to read William Showell. William Showell (1903 - 1984) was a Canadian painter, known for landscape, portrait and nude paintings. L: 10 3/4 in. H: 8 1/2 in.



8178: WILLIAM SHOWELL, CANADIAN (1903 - 1984)

USD 100 - 200

Beautiful sketch of a garden and lamppost. Signed to read William Showell. William Showell (1903 - 1984) was a Canadian painter, known for landscape, portrait and nude paintings. L: 10 3/4 in. H: 8 1/2 in.

DR. RAFF'S COLLECTION OF CANADIAN ART 3



8179: WILLIAM SHOWELL, CANADIAN (1903 - 1984)

USD 100 - 200

A beautiful sketch of a gate of an estate. Signed to read William Showell. William Showell (1903 - 1984) was a Canadian painter, known for landscape, portrait and nude paintings. L: 8 1/2 in. H: 10 3/4 in.



8180: WILLIAM SHOWELL, CANADIAN (1903 - 1984)

USD 100 - 200

Sketches of two young men. Signed to read William Showell. William Showell (1903 - 1984) was a Canadian painter, known for landscape, portrait and nude paintings. L: 8 1/2 in. H: 10 3/4 in.



8181: WILLIAM SHOWELL, CANADIAN (1903 - 1984)

USD 100 - 200

Sketches of various characters. Signed to read William Showell. William Showell (1903 - 1984) was a Canadian painter, known for landscape, portrait and nude paintings. L: 10 3/4 in. H: 8 1/2 in.



8182: WILLIAM SHOWELL, CANADIAN (1903 - 1984)

USD 100 - 200

Various sketches of different characters. Signed to read William Showell. William Showell (1903 - 1984) was a Canadian painter, known for landscape, portrait and nude paintings. L: 8 1/2 in. H: 10 3/4 in.



8183: WILLIAM SHOWELL, CANADIAN (1903 - 1984)

USD 100 - 200

Sketch of a street with a lamppost. Signed to read William Showell. William Showell (1903 - 1984) was a Canadian painter, known for landscape, portrait and nude paintings. L: 8 1/2 in. H: 10 3/4 in.



8184: WILLIAM SHOWELL, CANADIAN (1903 - 1984)

USD 100 - 200

Sketch of an elaborate alley. Signed to read William Showell. William Showell (1903 - 1984) was a Canadian painter, known for landscape, portrait and nude paintings. L: 8 1/2 in. H: 10 3/4 in.



8185: WILLIAM SHOWELL, CANADIAN (1903 - 1984)

USD 100 - 200

Sketch of a man. Signed to read William Showell. William Showell (1903 - 1984) was a Canadian painter, known for landscape, portrait and nude paintings. L: 8 1/2 in. H: 10 3/4 in.



8186: WILLIAM SHOWELL, CANADIAN (1903 - 1984)

USD 100 - 200

Sketch of a seated uniformed man. Signed to read William Showell. William Showell (1903 - 1984) was a Canadian painter, known for landscape, portrait and nude paintings. L: 8 1/2 in. H: 10 3/4 in.

DR. RAFF'S COLLECTION OF CANADIAN ART 3



8187: WILLIAM SHOWELL, CANADIAN (1903 - 1984)

USD 100 - 200

Sketch of a group of seated elderly people. Signed to read William Showell. William Showell (1903 - 1984) was a Canadian painter, known for landscape, portrait and nude paintings. L: 10 3/4 in. H: 8 1/2 in.



8188: WILLIAM SHOWELL, CANADIAN (1903 - 1984)

USD 100 - 200

Various sketches of people. Signed to read William Showell. William Showell (1903 - 1984) was a Canadian painter, known for landscape, portrait and nude paintings. L: 8 1/2 in. H: 10 3/4 in.



8189: WILLIAM SHOWELL, CANADIAN (1903 - 1984)

USD 100 - 200

Sketch of a man's portrait. Signed to read William Showell. William Showell (1903 - 1984) was a Canadian painter, known for landscape, portrait and nude paintings. L: 8 1/2 in. H: 10 3/4 in.



8190: WILLIAM SHOWELL, CANADIAN (1903 - 1984)

USD 100 - 200

Sketch of a wrecking yard/ car junkyard. Signed to read William Showell. William Showell (1903 - 1984) was a Canadian painter, known for landscape, portrait and nude paintings. L: 10 3/4 in. H: 8 1/2 in.



8191: WILLIAM SHOWELL, CANADIAN (1903 - 1984)

USD 100 - 200

Sketch of a multi-storey mixed-used building, with artist's notes on color specifics. Signed to read William Showell. William Showell (1903 - 1984) was a Canadian painter, known for landscape, portrait and nude paintings. L: 8 1/2 in. H: 10 3/4 in.



8192: WILLIAM SHOWELL, CANADIAN (1903 - 1984)

USD 100 - 200

Sketch of a woman. Signed to read William Showell. William Showell (1903 - 1984) was a Canadian painter, known for landscape, portrait and nude paintings. L: 10 3/4 in. H: 8 1/2 in.



8193: WILLIAM SHOWELL, CANADIAN (1903 - 1984)

USD 100 - 200

Sketch of a woman. Signed to read William Showell. William Showell (1903 - 1984) was a Canadian painter, known for landscape, portrait and nude paintings. L: 8 1/2 in. H: 10 3/4 in.



8194: WILLIAM SHOWELL, CANADIAN (1903 - 1984)

USD 100 - 200

Sketch of a woman. Signed to read William Showell. William Showell (1903 - 1984) was a Canadian painter, known for landscape, portrait and nude paintings. L: 10 3/4 in. H: 8 1/2 in.

DR. RAFF'S COLLECTION OF CANADIAN ART 3



8195: WILLIAM SHOWELL, CANADIAN (1903 - 1984)

USD 100 - 200

Sketch of a woman. Signed to read William Showell. William Showell (1903 - 1984) was a Canadian painter, known for landscape, portrait and nude paintings. L: 8 1/2 in. H: 10 3/4 in.



8196: WILLIAM SHOWELL, CANADIAN (1903 - 1984)

USD 100 - 200

Sketch of a naked lady in recumbent position. Signed to read William Showell. William Showell (1903 - 1984) was a Canadian painter, known for landscape, portrait and nude paintings. L: 10 3/4 in. H: 8 1/2 in.



8197: WILLIAM SHOWELL, CANADIAN (1903 - 1984)

USD 100 - 200

Sketch of lady's portrait, back view. Signed to read William Showell. William Showell (1903 - 1984) was a Canadian painter, known for landscape, portrait and nude paintings. L: 10 3/4 in. H: 8 1/2 in.



8198: WILLIAM SHOWELL, CANADIAN (1903 - 1984)

USD 100 - 200

Sketch of a naked lady, front view. Signed to read William Showell. William Showell (1903 - 1984) was a Canadian painter, known for landscape, portrait and nude paintings. L: 10 3/4 in. H: 8 1/2 in.



8199: WILLIAM SHOWELL, CANADIAN (1903 - 1984)

USD 100 - 200

Sketch of a lady's portrait, side view. Signed to read William Showell. William Showell (1903 - 1984) was a Canadian painter, known for landscape, portrait and nude paintings. L: 8 1/2 in. H: 10 3/4 in.



8200: WILLIAM SHOWELL, CANADIAN (1903 - 1984)

USD 100 - 200

Sketch of a lady's portrait, back view. Signed to read William Showell. William Showell (1903 - 1984) was a Canadian painter, known for landscape, portrait and nude paintings. L: 8 1/2 in. H: 10 3/4 in.



8201: WILLIAM SHOWELL, CANADIAN (1903 - 1984)

USD 100 - 200

Sketch of lady's portrait. Signed to read William Showell. William Showell (1903 - 1984) was a Canadian painter, known for landscape, portrait and nude paintings. L: 10 3/4 in. H: 8 1/2 in.



8202: WILLIAM SHOWELL, CANADIAN (1903 - 1984)

USD 100 - 200

Rough and colored sketches of a group of women. Signed to read William Showell. William Showell (1903 - 1984) was a Canadian painter, known for landscape, portrait and nude paintings. L: 8 1/2 in. H: 10 3/4 in.

DR. RAFF'S COLLECTION OF CANADIAN ART 3



8203: WILLIAM SHOWELL, CANADIAN (1903 - 1984)

USD 100 - 200

Sketches of various miniature portraits. Signed to read William Showell. William Showell (1903 - 1984) was a Canadian painter, known for landscape, portrait and nude paintings. L: 8 1/2 in. H: 10 3/4 in.



8204: WILLIAM SHOWELL, CANADIAN (1903 - 1984)

USD 100 - 200

A sketch on paper of ladies in billowing dresses. Signature to the bottom right to read W. Showell. William Showell (1903 - 1984) was a Canadian painter, known for landscape, portrait and nude paintings. L: 9 in. H: 12 in.



8205: WILLIAM SHOWELL, CANADIAN (1903 - 1984)

USD 100 - 200

A sketch of the artist's profile. Signed on bottom right to read W. Showell. William Showell (1903 - 1984) was a Canadian painter, known for landscape, portrait and nude paintings. L: 9 in. H: 12 in.



8206: WILLIAM SHOWELL, CANADIAN (1903 - 1984)

USD 100 - 200

Sketch of a lady with her chin on her hands, reading, and her cup rests on the table. Signed to read William Showell. William Showell (1903 - 1984) was a Canadian painter, known for landscape, portrait and nude paintings. L: 9 in. H: 12 in.



8207: WILLIAM SHOWELL, CANADIAN (1903 - 1984)

USD 100 - 200

A self portrait sketch, of the artist's profile. Signature to the bottom right to read W. Showell. William Showell (1903 - 1984) was a Canadian painter, known for landscape, portrait and nude paintings. L: 9 in. H: 12 in.



8208: WILLIAM SHOWELL, CANADIAN (1903 - 1984)

USD 100 - 200

Sketch of a young girl reading a book. Signature to the bottom right to read W. Showell. William Showell (1903 - 1984) was a Canadian painter, known for landscape, portrait and nude paintings. L: 9 in. H: 12 in.



8209: BEAUTIFUL OIL ON CANVASE LANDSCAPE PAINTING

USD 500 - 700

An oil painting that depicts a pathway within a park. Unsigned but inscribed on bottom left to read Marallet Montreal. H: 23 in. L: 31 in.



8210: GORDON GEZA MARICH, CANADIAN (1913 - 1985)

USD 500 - 700

An oil on canvas painting that depicts a winter landscape. Signature on bottom right to read G. Marich. Gordon Geza Marich (1913 - 1975) was known for landscape, portrait, city scene and flower painting. Born in Hungary, Marich studied art in Budapest and emigrated to Canada in 1957. He lived in Nova Scotia, Quebec and Hungary. His works are displayed in the National Museum of Budapest, in galleries in Toronto, Ottawa and Montreal and in private collections. Known for his landscape, portrait, city and flower paintings, his work evolved towards abstraction, including extensive use of a palette knife. H: 23 in. L: 31 in.

DR. RAFF'S COLLECTION OF CANADIAN ART 3



8211: GORDON GEZA MARICH, CANADIAN (1913 - 1985)

USD 500 - 700

A beautiful oil on canvas painting of a landscape. Signature on bottom left to read G. Mauich. Gordon Geza Marich (1913 - 1975) was known for landscape, portrait, city scene and flower painting. Born in Hungary, Marich studied art in Budapest and emigrated to Canada in 1957. He lived in Nova Scotia, Quebec and Hungary. His works are displayed in the National Museum of Budapest, in galleries in Toronto, Ottawa and Montreal and in private collections. Known for his landscape, portrait, city and flower paintings, his work evolved towards abstraction, including extensive use of a palette knife. H: 23 in. L: 31 in.



8212: GORDON GEZA MARICH, CANADIAN (1913 - 1985)

USD 500 - 700

An oil on canvas painting of a winter landscape. Signature on bottom right to read G. Marich. Gordon Geza Marich (1913 - 1975) was known for landscape, portrait, city scene and flower painting. Born in Hungary, Marich studied art in Budapest and emigrated to Canada in 1957. He lived in Nova Scotia, Quebec and Hungary. His works are displayed in the National Museum of Budapest, in galleries in Toronto, Ottawa and Montreal and in private collections. Known for his landscape, portrait, city and flower paintings, his work evolved towards abstraction, including extensive use of a palette knife. H: 23 in. L: 31 in.



8213: OIL ON CANVAS PAINTING OF WATERFALL BY GREGOR

USD 300 - 500

An oil on canvas painting that depicts a majestic waterfall. Signature on bottom left to read Gregor. H: 24 in. L: 32 in.



8214: GORDON GEZA MARICH, CANADIAN (1913 - 1985)

USD 500 - 700

A beautiful oil painting that depicts a winter landscape. Signature on bottom right to read G. Marich. Gordon Geza Marich (1913 - 1975) was known for landscape, portrait, city scene and flower painting. Born in Hungary, Marich studied art in Budapest and emigrated to Canada in 1957. He lived in Nova Scotia, Quebec and Hungary. His works are displayed in the National Museum of Budapest, in galleries in Toronto, Ottawa and Montreal and in private collections. Known for his landscape, portrait, city and flower paintings, his work evolved towards abstraction, including extensive use of a palette knife. H: 23 in. L: 31 in.



8215: GORDON GEZA MARICH, CANADIAN (1913 - 1985)

USD 500 - 700

An oil on canvas painting that depicts a winter landscape. Signature on bottom to read G. Marich. Gordon Geza Marich (1913 - 1975) was known for landscape, portrait, city scene and flower painting. Born in Hungary, Marich studied art in Budapest and emigrated to Canada in 1957. He lived in Nova Scotia, Quebec and Hungary. His works are displayed in the National Museum of Budapest, in galleries in Toronto, Ottawa and Montreal and in private collections. Known for his landscape, portrait, city and flower paintings, his work evolved towards abstraction, including extensive use of a palette knife. H: 23 in. L: 31 in.



8216: GORDON GEZA MARICH, CANADIAN (1913 - 1985)

USD 500 - 700

A beautiful oil painting of landscape. Signature on bottom right to read G. Marich. Gordon Geza Marich (1913 - 1975) was known for landscape, portrait, city scene and flower painting. Born in Hungary, Marich studied art in Budapest and emigrated to Canada in 1957. He lived in Nova Scotia, Quebec and Hungary. His works are displayed in the National Museum of Budapest, in galleries in Toronto, Ottawa and Montreal and in private collections. Known for his landscape, portrait, city and flower paintings, his work evolved towards abstraction, including extensive use of a palette knife. H: 23 in. L: 31 in.

DR. RAFF'S COLLECTION OF CANADIAN ART 3



8217: GORDON GEZA MARICH, CANADIAN (1913 - 1985)

USD 500 - 700

A beautiful oil painting of a winter landscape. Signature on bottom right to read G. Marich. Gordon Geza Marich (1913 - 1975) was known for landscape, portrait, city scene and flower painting. Born in Hungary, Marich studied art in Budapest and emigrated to Canada in 1957. He lived in Nova Scotia, Quebec and Hungary. His works are displayed in the National Museum of Budapest, in galleries in Toronto, Ottawa and Montreal and in private collections. Known for his landscape, portrait, city and flower paintings, his work evolved towards abstraction, including extensive use of a palette knife. H: 23 in. L: 31 in.



8218: GORDON GEZA MARICH, CANADIAN (1913 - 1985)

USD 500 - 700

An oil on canvas painting that depicts a winter landscape. Signature on bottom right to read G. Marich. Gordon Geza Marich (1913 - 1975) was known for landscape, portrait, city scene and flower painting. Born in Hungary, Gordon Geza Marich studied art in Budapest and emigrated to Canada in 1957. He lived in Nova Scotia, Quebec and Hungary. His works are displayed in the National Museum of Budapest, in galleries in Toronto, Ottawa and Montreal and in private collections. Known for his landscape, portrait, city and flower paintings, his work evolved towards abstraction, including extensive use of a palette knife. H: 23 in. L: 31 in.



8219: GORDON GEZA MARICH, CANADIAN (1913 - 1985)

USD 500 - 700

An oil painting that depicts a winter landscape. Signature on lower right to read G. Marich. Gordon Geza Marich (1913 - 1975) was known for landscape, portrait, city scene and flower painting. Born in Hungary, Gordon Geza Marich studied art in Budapest and emigrated to Canada in 1957. He lived in Nova Scotia, Quebec and Hungary. His works are displayed in the National Museum of Budapest, in galleries in Toronto, Ottawa and Montreal and in private collections. Known for his landscape, portrait, city and flower paintings, his work evolved towards abstraction, including extensive use of a palette knife. H: 23 in. L: 31 in.



8220: GORDON GEZA MARICH, CANADIAN (1913 - 1985)

USD 500 - 700

An oil on canvas painting that depicts a winter landscape. Signature on bottom right to read G. Marich. Gordon Geza Marich (1913 - 1975) was known for landscape, portrait, city scene and flower painting. Born in Hungary, Gordon Geza Marich studied art in Budapest and emigrated to Canada in 1957. He lived in Nova Scotia, Quebec and Hungary. His works are displayed in the National Museum of Budapest, in galleries in Toronto, Ottawa and Montreal and in private collections. Known for his landscape, portrait, city and flower paintings, his work evolved towards abstraction, including extensive use of a palette knife. H: 23 in. L: 31 in.



8221: GORDON GEZA MARICH, CANADIAN (1913 - 1985)

USD 500 - 700

A beautiful oil on canvas painting that depicts an autumn forest. Signature on bottom right to read G. Marich. Gordon Geza Marich (1913 - 1975) was known for landscape, portrait, city scene and flower painting. Born in Hungary, Gordon Geza Marich studied art in Budapest and emigrated to Canada in 1957. He lived in Nova Scotia, Quebec and Hungary. His works are displayed in the National Museum of Budapest, in galleries in Toronto, Ottawa and Montreal and in private collections. Known for his landscape, portrait, city and flower paintings, his work evolved towards abstraction, including extensive use of a palette knife. H: 23 in. L: 31 in.



8222: GORDON GEZA MARICH, CANADIAN (1913 - 1985)

USD 500 - 700

A beautiful oil on canvas painting that depicts a winter landscape. Signature on bottom left to read G. Marich. Gordon Geza Marich (1913 - 1975) was known for landscape, portrait, city scene and flower painting. Born in Hungary, Gordon Geza Marich studied art in Budapest and emigrated to Canada in 1957. He lived in Nova Scotia, Quebec and Hungary. His works are displayed in the National Museum of Budapest, in galleries in Toronto, Ottawa and Montreal and in private collections. Known for his landscape, portrait, city and flower paintings, his work evolved towards abstraction, including extensive use of a palette knife. H: 24 in. L: 30 in.

DR. RAFF'S COLLECTION OF CANADIAN ART 3



8223: GORDON GEZA MARICH, CANADIAN (1913 - 1985)

USD 500 - 700

A beautiful oil on canvas painting that depicts a winter landscape. Signature on bottom left to read G. Marich. Gordon Geza Marich (1913 - 1975) was known for landscape, portrait, city scene and flower painting. Born in Hungary, Gordon Geza Marich studied art in Budapest and emigrated to Canada in 1957. He lived in Nova Scotia, Quebec and Hungary. His works are displayed in the National Museum of Budapest, in galleries in Toronto, Ottawa and Montreal and in private collections. Known for his landscape, portrait, city and flower paintings, his work evolved towards abstraction, including extensive use of a palette knife. H: 24 in. L: 30 in.



8224: GORDON GEZA MARICH, CANADIAN (1913 - 1985)

USD 500 - 700

A beautiful oil on canvas painting of an autumn landscape. Signature on bottom right to read G. Marich. Gordon Geza Marich (1913 - 1975) was known for landscape, portrait, city scene and flower painting. Born in Hungary, Marich studied art in Budapest and emigrated to Canada in 1957. He lived in Nova Scotia, Quebec and Hungary. His works are displayed in the National Museum of Budapest, in galleries in Toronto, Ottawa and Montreal and in private collections. Known for his landscape, portrait, city and flower paintings, his work evolved towards abstraction, including extensive use of a palette knife. H: 24 in. L: 30 in.



8225: GORDON GEZA MARICH, CANADIAN (1913 - 1985)

USD 500 - 700

An oil on canvas of a winter landscape. Signature on bottom right to read G. Marich. Gordon Geza Marich (1913 - 1975) was known for landscape, portrait, city scene and flower painting. Born in Hungary, Marich studied art in Budapest and emigrated to Canada in 1957. He lived in Nova Scotia, Quebec and Hungary. His works are displayed in the National Museum of Budapest, in galleries in Toronto, Ottawa and Montreal and in private collections. Known for his landscape, portrait, city and flower paintings, his work evolved towards abstraction, including extensive use of a palette knife. H: 23 in. L: 31 in.



8226: GORDON GEZA MARICH, CANADIAN (1913 - 1985)

USD 500 - 700

An oil on canvas painting that depicts a winter forest. Signature on bottom right to read G. Marich. Gordon Geza Marich (1913 - 1975) was known for landscape, portrait, city scene and flower painting. Born in Hungary, Marich studied art in Budapest and emigrated to Canada in 1957. He lived in Nova Scotia, Quebec and Hungary. His works are displayed in the National Museum of Budapest, in galleries in Toronto, Ottawa and Montreal and in private collections. Known for his landscape, portrait, city and flower paintings, his work evolved towards abstraction, including extensive use of a palette knife. H: 23 in. L: 31 in.



8227: OIL PAINTING ON CANVAS OF A VILLAGE BY CHER HOEVEN

USD 500 - 700

Depicts a quaint rural village at the foot of a snowy mountain. Signature on bottom left to read Cher Hoeven. H: 20 in. x L: 24 in.



8228: ALBERT WOODS, BRITISH (1871 - 1944)

USD 500 - 700

Framed. Depicts a coastal town up on a cliff, overlooking the ocean. Signature to read Albert Woods. Albert Woods was a British artist who was born in 1871. His work, "Walton Village, Clair de Lune", was sold in 2008. The artist died in 1944. H: 20 in. L: 36 in.



8229: OIL PAINTING OF HAYSTACKS BY H. HIENSCH

USD 300 - 500

Framed. A beautiful painting depicts farmer working on a field along with haystacks on the side. Signature on bottom right to read H. Hiensch. H: 23 in. L: 30 1/4 in.

DR. RAFF'S COLLECTION OF CANADIAN ART 3



8230: WALTER CANNON, BRITISH (1887-1913)

USD 1,200 - 1,800

Giltwood framed. Depicts ships sailing in roaring waves. Signature to bottom left to read W. Cannon. Walter Cannon (1887 - 1913) was a British painter. One of his works, "Pair: Sail and Steam Offshore", was sold in 2013. H: 10 in. x L: 18 in.



8231: FRAMED PAINTING OF A WINDMILL BY W. PERCY

USD 1,000 - 3,000

Framed, depicts a windmill up on a mountain. Signature on bottom to read W. Percy. H: 8 in. L: 10 in.



8232: OIL PAINTING ON BOARD OF A SNAKE CHARMER

USD 100 - 200

Depicts an Indian man with turban performing with a snake in a weaved basket. Unsigned.



8233: FRAMED COLLAGE PAINTING

USD 200 - 300

Framed. An abstract collage painting. Unsigned. H: 14 in. L: 14 in.



8234: FRAMED PAINTING OF A SHIP BY HAGUENAUER

USD 600 - 800

Framed. Depicts a ship near a port, signature on top left to read Haguenauer 50. H: 19 3/4 in. L: 24 in.



8235: MARCEL STARY, CANADIAN (1918-1962)

USD 300 - 500

An oil painting depicts stationery, books and fruits. Signature on bottom to read M. Stary 51. Marcel Stary (1918 - 1962) was a Canadian artist. He was born in the former Czechoslovakia and studied Art in Prague. Marcel escaped during the Soviet occupation and came to Montreal, Canada in 1948. He traditionally worked in oil, watercolor and acrylics. His subjects included the landscape and life of the Inuit people in the Arctic and Labrador. H: 20 in. L: 16 in.



8236: GILTWOOD FRAMED OIL ON CANVAS PAINTING

USD 500 - 800

Giltwood framed. Depicts an old woman telling story to two kids. Unsigned. H: 13 in. x W: 9 1/2 in.

DR. RAFF'S COLLECTION OF CANADIAN ART 3



8237: DUTCH OIL ON CANVAS PAINTING OF A VILLAGE SCENE

USD 500 - 800

Framed. Painted in great details of a village town scene. Unsigned. H: 15 in. L: 1 1/4 in.



8238: FRAMED OIL ON CANVAS PAINTING OF DUTCH CITY

USD 800 - 1,200

Framed, an oil painting that depicts a Dutch city scene. Signature on bottom to read R. Brosse. H: 13 1/8 in. L: 11 1/8 in.



8239: DUTCH OIL PAINTING ON CANVAS OF A FAMILY SCENE

USD 1,000 - 2,000

Framed. Depicts a gathering in a dim-lit room. Signature on bottom right to read Copie Ht, dated 41. H: 15 1/4 in. L: 11 1/8 in.



8240: FRAMED OIL ON CANVAS OF A BARN SCENE

USD 500 - 1,000

Framed, an oil painting that depicts the inside of a barn with roosters, birds and a duck eating. Unsigned. H: 11 1/4 in. L: 14 1/4 in.



8241: FRAMED OIL ON CANVAS PAINTING

USD 500 - 1,000

Framed. Depicts a group of noble men scene. Unsigned. H: 10 1/4 in. L: 14 in.



8242: JORDI PLA DOMENECH, SPANISH (1917 - 1992)

USD 200 - 500

A lithograph that depicts a mother and her daughter. Pencil signed on bottom. Signed on bottom right to read Pla Domenech. Jordi Pla Doenech (1917 - 1992) was a Spanish painter who was known for painting. The record sold price for this artist in auction is USD \$600 for "Woman in Perfume Bottle", which was sold in 2010. H: 14 3/4 in. L: 15 in.



8243: JACK BEDER, CANADIAN (1910 - 1987)

USD 500 - 1,000

Framed. Signature to read "Beder" on bottom right. Jack Beder (1910 - 1987), a well respected Canadian artist. Born in Poland in 1910 and immigrated to Montreal in 1926. He studied at the École des Beaux-Arts de Montréal from 1929-1934, during which time he won several awards and prizes for drawing and painting. His style was representational and impressionist and his main influences were Maurice Cullen and, more importantly, James Wilson Morrice, both Canadian painters. He was best known for Montreal street scenes and 1930s Montreal cafes, but also painted landscapes, still-lives, gardens and portraits/figures. He worked in oils, acrylics, gouaches, watercolors, pastels, drawings and prints (serigraphs, linoprints, monotypes and monoprints). He also produced sculpture, mostly non-objective, in wood, limestone, marble, serpentine, plaster and liquitex/ cardboard. The record sold price for this artist in auction is USD \$7,145 for "Tree Image (Sculpture #43)", which was sold at Waddington's in 2017. H: 10 1/2 in. L: 14 in.

DR. RAFF'S COLLECTION OF CANADIAN ART 3



8244: MARCEL STARY, CANADIAN (1918-1962)

USD 500 - 800

Framed, a watercolor painting that depicts a bare tree in a barren land. Signature to read M. Stary. Marcel Stary (1918 - 1962) was a Canadian artist. He was born in the former Czechoslovakia and studied Art in Prague. Marcel escaped during the Soviet occupation and came to Montreal, Canada in 1948. He traditionally worked in oil, watercolor and acrylics. His subjects included the landscape and life of the Inuit people in the Arctic and Labrador. H: 14 1/4 in. L: 18 1/4 in.



8245: FRAMED DUTCH PAINTING OF A HARBOR SCENE

USD 700 - 900

Framed, depicts boats and ships in a harbor. Not signed. H: 11 in. x L: 14 in.



8246: FERNELEY RAMUS (1868 - 1937)

USD 400 - 500

Framed, a painting that depicts a village scene. Signature on bottom right to read F. Ramus, 1915. Ferneley Ramus (1868 - 1937), an artist who was a prolific painter in both oils and watercolors. H: 9 in. L: 16 1/4 in.



8247: JAMES EDWARD GRACE, BRITISH (1851 - 1908)

USD 800 - 1,000

Depicts a tranquil lake, signature on bottom left to read J. E. Grace. James Edward Grace (1851 - 1908), he was a 19th century British painter, known for landscape, and cattle in landscape paintings. The record sold price in auction for his artwork is USD \$2,050, which was sold at Sotheby's Olympia in 2006. H: 10 in. L: 13 in.



8248: FRAMED DRAWING OF A FARMER AND A HOUSE

USD 100 - 200

Framed. A drawing of a farmer and a house. Signed on bottom and signature to read C. McBean. H: 10 in. L: 13 in.



8249: WATERCOLOR DRAWING OF A CITYSCAPE

USD 300 - 400

A watercolor painting that depicts a cityscape. Signed on bottom right which is illegible. H: 13 in. L: 18 3/4 in.



8250: FRAMED PAINTING OF AN OLD GENTLEMAN

USD 500 - 1,000

Framed, a watercolor painting that depicts an old man in a sitting position. Signature on bottom which is illegible. H: 19 in. L: 13 3/8 in.

DR. RAFF'S COLLECTION OF CANADIAN ART 3



8251: FRAMED PAINTING OF A WINTER CITY SCENE

USD 800 - 1,200

Giltwood framed, depicts of a quaint town, with people strolling on a frozen lake. Unsigned. H: 10 in. x L: 14 1/2 in.



8252: 18TH C. PAINTING OF A NOBLE FAMILY GATHERING

USD 500 - 1,000

Depicts a family embracing each other in a grand living room. H: 14 1/4 in. x L: 22 in.



8253: JOSEPH GIUNTA, CANADIAN (1911 - 2001)

USD 1,000 - 1,200

Framed, the oil painting depicts some town people walking down on the village street. Signature on bottom right to read Giunta. Joseph Giunta had an artistic career that spanned over 70 years, he was known for both of his styles, realism and gestural abstraction. The record sold price for this artist in auction is USD \$3,219 for his works, "Hiver, Laurentides, Que", which was sold in 2007.



8254: WILLEM FREDERIK NOORDIJK, DUTCH (1887 - 1970)

USD 800 - 1,000

Painted in great details, depicts a farmer and two milk cows. Signed on bottom right to read W. Noordijk. Willem Frederik Noordijk (1887 - 1970) was a Dutch painter who was known for landscape paintings. The record sold price for this artist in auction is USD \$1,734 for his work, "Skaters by the City Walls of Naarden," which was sold in 2001. H: 16 in. L: 23 3/4 in.



8255: OIL ON CANVAS PAINTING OF A COUNTRY CABIN

USD 250 - 550

A beautiful oil on canvas painting. Depicts a scene of a beautiful country cabin with its front alley, surrounding by different plants and flowers in the forest. H: 24 in. L: 36 in.



8256: CHINESE PAINTING OVER PRINT OF PEONIES

USD 200 - 300

Depicts overflowing peonies in a vase with a foo dog sitting on the side. Inscription to top right. H: 36 in. x L: 21 in.



8257: LITHOGRAPH WITH DOGS AND A DUCK BY CROWE

USD 300 - 600

Framed. A lithograph of six black dogs in the background with a duck in the front. Signature on bottom right to read Crowe.

DR. RAFF'S COLLECTION OF CANADIAN ART 3



8258: OIL PAINTING ON CANVAS OF A SPRINGER SPANIEL DOG

USD 500 - 800

In the field. Framed. H: 19 1/4 in. L: 23 1/2 in.



8259: FRAMED PAINTING OF THE BLUE HORSE LEGEND

USD 500 - 800

Depicting a scene of the Navajo myths about the blue horse. Signature to the lower right read Leo Witte. H: 23 in. L: 31 in.



8260: FRAMED LITHOGRAPH OF RUINS

USD 50 - 100

Framed. A monochrome lithograph of ruins. H: 17 3/4 in. L: 24 in.



8261: FRAMED PAINTING OF DAISY

USD 100 - 200

Framed. Depicts a small bouquet of yellow daisies in a glass jar. Unsigned. H: 24 1/4 in. L: 19 1/4 in.



8262: FRAMED PAINTING OF A DANCING MAN

USD 300 - 350

Framed. A sketch painting of a nude man dancing. H: 29 in. L: 23 in.



8263: FRAMED ACRYLIC PRINT OF A HARBOR SCENE

USD 300 - 500

Framed. An acrylic print-work that depicts a harbor scenes with boats and yachts. Pencil signed on bottom which is illegible and numbered 111/300. H: 23 1/4 in. L: 33 1/2 in.



8264: OIL PAINTING OF A NUDE LADY BY JACQUES LUC

USD 300 - 500

An oil on canvas painting that depicts a naked lady crouching in a tub with her left arm supporting herself, and the right arm cleaning herself with a sponge. Signed on bottom right to read Jacques Luc. L: 24 in. W: 36 in.



8265: FRAMED OIL PAINTING OF A GARDEN SCENE

USD 200 - 300

Framed. A beautiful oil painting that depicts a luxe garden with numerous blossoming flowers. Unsigned. H: 24 in. L: 36 in.

DR. RAFF'S COLLECTION OF CANADIAN ART 3



8266: OIL PAINTING OF POTTED LILIES BY R. ROSSINI

USD 300 - 500

A beautiful oil on canvas painting that depicts of a pot of red and white blooming lilies. Signed on the bottom left to read R. Rossini. H: 36 in L: 24 in



8267: FRAMED OIL PRINT OF PEACOCKS AND CHICKENS

USD 1,200 - 1,500

Framed. A beautiful painting of two majestic peacocks with chickens and chicks. Unsigned. H: 24 in L: 36 in



8268: TWO FRAMED PRINTS OF MAPS

USD 75 - 150

H: 20 in L: 22 3/4 in



8269: OIL ON CANVAS PAINTING OF LOVERS BY M. SOVINO

USD 500 - 800

Both of them are sitting down in a forest setting, with a bird and a flower basket. Signed on bottom to read M. Sovino. H: 36 in L: 24 in.



8270: FRAMED LITHOGRAPH BY P DAVIES

USD 400 - 600

Framed. Titled "Triangle 25." A lithograph of repetitive triangles in different red-color shades. Signed on bottom right to read P Davies. H: 31 in. L: 25 in.



8271: FRAMED OIL PAINTING OF A PIANIST BY A. CRANE

USD 500 - 800

Framed. An oil on canvas painting that depicts a pianist performing, with different souls floating around. Signature to read A. Crane 11-37. H: 30 in. L: 25 in.



8272: OIL PAINTING ON CANVAS OF A POTTED FLOWERS

USD 500 - 800

A scene of a potted blooming flowers. Signature is on the bottom left corner to read Francois Bieler. H: 36 in L: 24 in



8273: FRAMED PRINT OF LANDSCAPE BY ROBERT WOOD

USD 500 - 800

Framed. A print of a view of a waterfall goes through the mountains and forest. Signed to read Robert Wood, and numbered 955/1000 on the bottom. L: 22 1/2 in; H: 18 in.

DR. RAFF'S COLLECTION OF CANADIAN ART 3



8274: CHINESE FRAMED PAINTING OF A LANDSCAPE

USD 1,800 - 2,500

Signature to read Li Xiongcai, dated Ding Mao (1987). Li Xiongcai (1910-2001) is equally skillful at painting figures, landscapes and flower & birds. He has carried on the traditions of the Lingnan School. During the long period, Lingnan made innovations in technique and developed its own style. He paints with bold fluid sweeps of the brush, creating an imposing atmosphere and suggesting great majesty and splendor. People has named and honored his works as "Li's Landscapes" or "Li's Pines". H: 28 3/8 in.(72cm) x W: 18 3/4 in.(47.5cm)



8275: FRAMED COLOUR ILLUSTRATION OF THE GREAT EXHIBITION

USD 200 - 300

Framed. An illustration that depicts a temporary structure and a scene of the world exposition built in Hyde Park, London from May to October 1851. H: 18 in. L: 24 in.



8276: NORMAN ROCKWELL, AMERICAN (1894 - 1978)

USD 5,000 - 7,000

Framed, titled "She's my Baby". A lithograph that depicts a boy and a girl. Numbered 124/200 and signed on bottom right to read Norman RockwellNorman Rockwell (1894 - 1978) was an American painter and illustrator. His works have a broad popular appeal in the United States for their reflection of American culture. Rockwell is most famous for the cover illustrations of everyday life he created for The Saturday Evening Post magazine over nearly five decades.The record sold price of this artist in auction is USD \$46 million for his work, "Saying Grace" which was sold in 2013.H: 27 in L: 20 in



8277: FRAMED PAINTING OF SHAVANO BY LEO WITTE

USD 300 - 600

Framed. Titlted "Shavano remembered". Signature to read Leo Witte to the lower left. H: 22 1/4 in. L: 33 1/2 in.



8278: FRAMED OIL PAINTING OF BOATS

USD 300 - 600

Signature to read P. Seatun. H: 24 in L: 36 in



8279: OIL ON CANVAS PRINT OF FLOWERS

USD 300 - 500

With a heavily gilt frame. H: 24 in. L: 20 in. [Dimension without frame]



8280: OIL ON CANVAS PAINTING OF A PARISIAN STOREFRONT

USD 300 - 500

24 in. (H) x 20 in. (L).

DR. RAFF'S COLLECTION OF CANADIAN ART 3



8281: FRAMED OIL PAINTING BY R.WHITELY

USD 500 - 800

Framed, depicts a path amongst a forest, painted with magnificent details. Signed by R. Whitely. H: 12 in. L: 16 in.



8282: OIL PAINTING ON CANVAS OF PARISIAN SHOPS

USD 200 - 300

Artist's signature to the bottom right. H: 24 in. L: 36 in.



8283: OIL PAINTING ON CANVAS OF LANDSCAPE

USD 300 - 500

A view of countryside, with boats flow on the river. Signature to read "Leifton", signed in the bottom right corner. H: 24 in. L: 36 in.



8284: OIL PAINTING ON CANVAS OF A POTTED FLOWERS

USD 500 - 800

A scene of a potted plant with different kind of beautiful blooming flowers. Signature read as Sackson H: 24 in. L: 36 in.



8285: OIL PAINTING ON CANVAS OF LAKE SHORE SCENE

USD 300 - 500

A lake shore scene with many ships parking. Signature read as "D.Dalton", Signed on the bottom right corner. H: 24 in. L: 36 in.



8286: OIL PAINTING BY WILLIAM TODD BRITISH

USD 500 - 800

Signature on bottom left to read W. Todd H: 24 in. L: 36 in.



8287: OIL PAINTING ON CANVAS OF A POTTED FLOWERS

USD 500 - 700

Depicting a scene of a potted plants with different kind of blooming beautiful flowers. Signature is on the bottom right corner. H: 24 in. L: 36 in.



8288: OIL ON CANVAS PAINTING OF SEASIDE COTTAGE

USD 700 - 800

Signature to read Leifton. H: 24 in., L: 36 in.

DR. RAFF'S COLLECTION OF CANADIAN ART 3



8289: CARL ROMNEY 20TH CENTURY

USD 800 - 1,000

A scene of different kinds of fruit on some silver plates. Signature on bottom right to read Carl Romney. H: 24 in. L: 36 in.



8290: FRAMED PAINTING OF A RIVER, SIGNED BY CARZON

USD 200 - 300

Pencil signed on the bottom and numbered 79/100.



8291: PORTRAIT OF A YOUNG BALLERINA, OIL ON CANVAS

USD 300 - 500

Dressing in a light blue tutu, in a standing position. H: 36 in. L: 24 in.



8292: OIL PAINTING ON CANVAS OF LANDSCAPE

USD 250 - 550

A view of a bridge cross the river of a small town. Signature to read "Leifton", signed in the bottom right corner. H: 24 in. L: 36 in.



8293: OIL PAINTING OF LANDSCAPE BY JAMES MCDUKEI

USD 300 - 500

Painted beautifully of a countryside house next to a pond; and a lady is walking down a path. Signed on bottom right to read James McDukei. H: 24 in. L: 36 in.



8294: FRAMED PRINT OF BULLFIGHT

USD 500 - 800

Signature to read Leo Witte to the lower left. H: 18 1/2 in. L: 27 3/4 in.



8295: OIL ON CANVAS PAINTING OF A WOMAN AND PIANO

USD 500 - 700

L: 24 in., H: 36 in.



8296: OIL ON CANVAS PAINTING OF SEA COVE

USD 200 - 300

Signature to read to the bottom right.

DR. RAFF'S COLLECTION OF CANADIAN ART 3



8297: BRITISH 20TH CENTURY LITHOGRAPH

USD 100 - 200

Magnificent landscape view of a river shore in a countryside in water color. Artist signature Leo Bromer . L: 27 1/2 in, H:12 1/2 in.



8298: FRAMED OIL ON CANVAS PAINTING OF A VALLEY

USD 400 - 500

Signature to read Robert E. Gorin. H: 36 in. L: 24 in. [Dimension without frame]



8299: VIETNAMESE FRAMED WOOD INLAY PICTURE

USD 300 - 400

Design with a bouquet of flowers with a ribbon on the bottom. H: 27 1/4 in. x W: 17 in.
