

# Artingstall Auctioneers 1874



INTERNATIONAL FINE ART & ANTIQUES SALE

---

Sunday - February 6, 2022

## INTERNATIONAL FINE ART & ANTIQUES SALE



### 8001: MAGNIFICENT GILT BRONZE MANTEL CLOCK

USD 800 - 1,200

Gilt bronze clock case with magnificent details and raised on scrolling feet. Clock dial with Roman numeral markings; and adorned with a figural group on top of lovers. H: 18 1/2 in.

---



### 8002: REX A PARK MOVEMENT GILT BRONZE MANTEL CLOCK

USD 1,500 - 2,500

Raised on scrolling legs, gilt bronze case with magnificent details. Clock dial with Roman numeral markings. Adorned atop with a figure of a nobleman. Movement made by Rex A Park. H: 17 1/2 in.

---



### 8003: EARLY 19TH C. FRENCH GILTBRONZE MANTEL CLOCK

USD 1,500 - 3,000

With a gilt-bronze case, dial with Roman numeral markers. Raised on four curved legs with delicate details. Adorned with a figure of a beauty on top right with blossoming flowers details. H: 18 in.

---

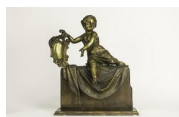


### 8004: MAGNIFICENT GILT BRONZE MANTEL CLOCK

USD 800 - 1,200

With a gilt bronze case with great details, clock dial with Roman numeral markings. Adorned with a figure of a nobleman sitting on top, sitting on a tree trunk, and playing with a bird. H: 18 in.

---



### 8005: WOODEN AND BRONZE FIGURE OF A CHILD

USD 300 - 600

Sitting on top of the wooden base covered with a rug and holding a mirror. H: 22 1/2 in. W: 22 1/2 in.

---



### 8006: SET OF FIVE SEVRES PORCELAIN PLATES

USD 1,000 - 1,500

Beautifully hand-painted in the center of blossoming flowers, bordered in sky blue bands with matching three floral cartouches around, and with gilt details. Diameter: 9 in.

---



### 8008: SILVER-PLATED CENTERPIECE WITH MIRROR PLATEAU

USD 500 - 800

A two-piece set, the mirror plateau shaped as waisted cartouche with a gilt gallery rail and ring handles, while the centerpiece is a deep oval dish partially lobed, and chased on the rim with circular foot slender handles. the Mark to the bottom. L: 16 1/2 in.

---



### 8009: BEAUTIFUL SILVER-PLATED TANKARD

USD 500 - 800

With raised design of children figures in relief all around the body, depicting a scene of picking grapes from vines for wine making. Flanked by a high handle, a spout and a hinged cover with a child holding a bundle of wheats as finial. H: 9 1/2 in.

---

## INTERNATIONAL FINE ART & ANTIQUES SALE



### 8010: SILVER-PLATED TANKARD

USD 500 - 800

With a beautiful design in relief of a wine making scene around the body with raised figures of immortals picking grapes, making wine. Flanked by a high handle and a hinged cover with a child figure as finial. H: 13 in.

---



### 8011: CUT CRYSTAL CENTERPIECE WITH BONBON DISH

USD 200 - 300

Mounted on a white marble plinth, flanked by a gilt bronze luster that adorns with drop crystals. Seated atop with a beautiful cut crystal bonbon dish. H: 15 in.

---



### 8012: BEAUTIFUL JAPANESE GILDED PORCELAIN JAR

USD 300 - 500

Beautifully hand-painted with enameled blossoming tree around the bulbous body, against a golden brown background. Mark to the base. H: 8 1/2 in.

---



### 8013: FRENCH SEVRES SKY BLUE BACKGROUND LIDDED VASE

USD 300 - 600

Beautifully hand-painted with a panel of a love scene with a panel of landscape scene on the body with gilt details; against a beautiful light blue background. Flanked by two gilt bronze lion-head ring handles. Mounted on a bronze plinth. (Lid is restored). Total Height: 19 in. Without Plinth: 17 1/2 in.

---



### 8014: 19TH C. OBLONG-SHAPED PORCELAIN JARDINIERE

USD 1,400 - 1,800

Beautifully hand-painted around the porcelain jardiniere with children playing; flanked by two lion-head ring handles on two sides. With the original metal lining. The rim is chipped. L: 20 in. Depth: 7 in.

---



### 8015: BEAUTIFUL ROYAL DOULTON PORCELAIN PLATE

USD 200 - 300

Mounted with a silver rim with mark. Beautifully hand-painted in the center and around the borders with colorful birds, against a purplish blue background. Marks on the bottom to read 8215; and Royal Doulton England. Diameter: 11 1/2 in.

---



### 8016: PAIR OF LIGHT PINK PORCELAIN STEM DISHES

USD 150 - 250

Each with a tall stem, with light pink background; beautifully hand-painted centrally with blossoming flowers, and gilt detail around the rim, matching the base. One of the dishes has some hair cracks. Diameter: 9 1/2 in.

---



### 8017: PAIR OF ANTIQUE CRYSTAL LUSTERS, CONVERTED AS LAMPS

USD 500 - 700

Converted as a pair of electric lamps. With two glass covers and crystal drops. H: 17 in.

---

## INTERNATIONAL FINE ART & ANTIQUES SALE



### 8018: BEAUTIFUL FRENCH NEEDLEPOINT OF A HUNTING SCENE

USD 200 - 300

Giltwood framed. The needlepoint depicts a hunting scene amongst a forest with dogs and birds with great details. With Frame: L: 21 in. H: 21 in.

---



### 8019: MARCEL STARY, CANADIAN (1918-1962)

USD 500 - 800

Framed. A watercolor painting that depicts a tranquil scenery of a lake amongst forest. Signature on bottom right to read M. Stary. Marcel Stary (1918 - 1962) was a Canadian artist. He was born in the former Czechoslovakia and studied Art in Prague. Marcel escaped during the Soviet occupation and came to Montreal, Canada in 1948. He traditionally worked in oil, watercolor and acrylics. His subjects included the landscape and life of the Inuit people in the Arctic and Labrador. H: 12 in. L: 16 in.

---



### 8020: MAGNIFICENT FRAMED OIL PAINTING

USD 500 - 800

Beautifully framed, an oil on canvas painting that depicts a horse carriage passing through a field. Signature on bottom right which is illegible. H: 8 in. L: 10 in.

---



### 8021: WATERCOLOR PAINTING OF A SHORE SCENE

USD 300 - 400

Framed. A watercolor painting that depicts waves crashing on shores. Signature on bottom right to read MR. H: 12 1/2 in. L: 21 in.

---



### 8022: WATERCOLOR PAINTING OF A SHORE

USD 300 - 500

Framed. A magnificent watercolor painting of the shore. Not signed. With Frame: L: 25 1/2 in. H: 15 1/2 in. Without Frame: L: 22 1/2 in. H: 12 in.

---



### 8023: WATERCOLOR PAINTING OF A SHORE SCENE

USD 500 - 800

Framed, a watercolor painting that depicts roaring ocean waves crashing on the shore. Signature on bottom left to read W.S.T. Smith. H: 12 in. L: 18 in.

---



### 8024: W. H. TUCK, (19TH CENTURY)

USD 1,000 - 1,500

Giltwood framed. A watercolor painting that depicts a lady resting at the door of her shed and admiring her garden. The record sold price for this artist is USD \$1,596 for "The Jockey Club", which was sold in 2013. H: 10 1/4 in L: 14 1/4 in

---

## INTERNATIONAL FINE ART & ANTIQUES SALE



### 8025: FRAMED OIL ON BOARD PAINTING OF STRAWBERRIES

USD 400 - 500

Giltwood framed. An oil on board painting that depicts a bunch of ripe strawberries with flowers on a table. Signed on bottom left to read Bellamy Carroll. With Frame: L: 19 in. H: 17 in. Painting Only: L: 9 in. H: 7 in.



### 8027: OIL ON CANVAS PAINTING OF PORTE ST-DENIS, PARIS

USD 400 - 500

Depicts a bustling Parisian street scene. Signature on bottom right which is illegible. H: 20 in. L: 24 in.



### 8029: CHINESE ENAMELED PORCELAIN FIGURE OF HAPPY BUDDHA

USD 200 - 300

In a sitting position, dressing in a flowing robe, with five children clinging on him.



### 8030: CHINESE ENAMELED FIGURAL VASE

USD 200 - 300

Beautifully painted in multicolor of a figural scene around the body. Four-character mark on the bottom. H: 18 in. (45.7 cm)



### 8031: CHINESE RED AND WHITE VASE

USD 800 - 1,200

Painted on the body with blossoming flowers and scrolling leaves. H: 13 in.



### 8032: JAPANESE IMARI HEXAGONAL BOWL

USD 200 - 300

Painted in the center of a foo lion. A four-character double ring mark on the bottom. H: 5 1/8 in. W: 10 3/4 in.



### 8033: FLAMBE-COLOR OVOID PORCELAIN VASE

USD 200 - 300

H: 10 3/4 in.



### 8034: SET OF NINE SILVER SPOONS

USD 200 - 300

Some have marks on the bottom. Total of 17.6 oz (approximately)

## INTERNATIONAL FINE ART & ANTIQUES SALE



### 8035: DECORATIVE LAMP

USD 200 - 300

Adorned with a figure of a clown playing guitar.

---



### 8036: CHINESE CELADON CRACKLEWARE BRUSH WASHER

USD 200 - 300

Four-character mark to read Yongzheng on the bottom. H: 2 1/2 in. W: 6 in.

---



### 8037: CHINESE BLUE AND WHITE BOTTLE VASE

USD 300 - 500

With a bulbous body, flanked by a long, cylindrical neck. Beautifully painted with flowers, fishes and scrolling leaves all around the vase. A double ring mark on the bottom.

---



### 8038: LARGE CHINESE POTTERY FIGURE OF A GENERAL

USD 300 - 500

Standing on a rock pedestal, the figure wears a colorful uniform while one hand holds a sword.

---



### 8039: 18TH CENTURY CHINESE BLUE AND WHITE DISH

USD 50 - 80

D: 5 in. H: 1 1/4 in.

---



### 8041: 18TH CENTURY PAIR OF CHINESE BRONZE CANDLESTICKS

USD 1,500 - 2,000

Of two beauties holding the seedpod of the lotus. H: 13 1/4 in. Private Collection of California Collector

---



### 8042: BISQUE FIGURE OF A GREEK GODDESS

USD 100 - 200

Riding horse carriage, with plinth. H: 7 in. L: 9 1/2 in.

---



### 8043: BRONZE FIGURE OF AN ELEPHANT

USD 200 - 300

On the wooden base. H: 4 in. Private Collection of California Collector

---

## INTERNATIONAL FINE ART & ANTIQUES SALE



### 8044: FRENCH SEVRES PORCELAIN VASE MOUNTED AS LAMP

USD 500 - 1,000

Beautifully hand-painted with a love scene. Painted on the neck and the bottom of the splayed feet with gilt details against a cobalt blue background. Flanked by two gilt bronze ring handles on the sides and mounted on a gilt bronze plinth. Total Height: 33 in. Vase Only: 14 1/2 in.



### 8045: FINE 19TH C. SILVER-PLATED AND GLASS CENTERPIECE

USD 800 - 1,000

Modeled as a child on an elaborate tripod base holding aloft a beautiful iridescent blue floral dish. H: 16 in.



### 8046: GILT BRONZE SEVEN-ARM CANDELABRUM

USD 500 - 800

Mounted on a gilt bronze plinth, with three legs of rococo design. Extended with a column of the same design in the center that is flanked by seven-arm candelabrum. H: 27 3/4 in.



### 8047: GILT BRONZE AND WHITE MARBLE SIX-ARM CANDLESTICK

USD 600 - 800

Mounted on a white marble base with two paw-leg foot. Seated atop with a bronze figure of a nymph in flowing dress holding a six-arm candlestick. H: 32 in.



### 8048: PAIR OF GILT BRONZE VASES WITH BLOSSOMING FLOWERS

USD 700 - 1,000

Each gilt bronze vase is with magnificent details, flanked by a tall stem of blossoming bouquet of flowers. Mounted on a square gilt bronze plinth. H: 33 in.



### 8049: DAUM CRYSTAL DUCK

USD 100 - 200

Signed DAUM. H: 4 1/2 in.



### 8050: PAIR OF ITALIAN CAPODIMONTE PORCELAIN CHARGERS

USD 400 - 800

With a raised medallion in the middle of fighting warriors. Decorated with a figural band in high relief around the raised medallion. Encircled by a scroll of connecting floral baskets with hanging tulles. Capodimonte mark to read on the bottom. Pairing with wooden stands. Diameter: 17 in.

## INTERNATIONAL FINE ART & ANTIQUES SALE



### 8051: CHINESE CARVED WOOD BOX

USD 100 - 200

Of rectangle shape. with two bronze handle on the side. L: 17in., W: 9 3/4 in., H: 9 in.

---



### 8052: 18TH C. CHINESE ANTIQUE GILT BRONZE BUDDHA

USD 500 - 800

Of 18th Century. Finely cast as a standing BuddhaH: 8 in.

---



### 8053: CHINESE CARVED STONE FIGURE OF STANDING GUANYIN

USD 1,000 - 2,000

In spinach color. With her hair in a top knot bun and wearing a hooded robe. Holding a bottle in one hand and brush in the other. H: 13 1/8 in.

---



### 8054: ANTIQUE CHINESE PAINTED STONE FIGURE OF KUBERA

USD 200 - 300

Known as the "God of Wealth" in Buddhism, this carved stone figure of Kubera is hand painted with brilliant gilt and multicolor pigments. He holds a brown mongoose in his left hand and a money bag in his right; surrounded by a flaming mandala. H: 7 1/2 in.

---



### 8055: TIBETAN BRONZE VESSEL WITH DESIGN OF CHILONGS

USD 500 - 800

Clambering all around the vase. The vessel is standing on top of two chilongs. The entirety of the body cast with Archaic-style design. H: 9 1/8 in.

---



### 8056: TWO EUROPEAN PORCELAIN VESSELS

USD 300 - 500

Each is beautifully painted with blossoming flowers against the ivory white ground. H: 12 in.

---



### 8057: DECORATIVE MARBLE PLINTH

USD 200 - 300

With a clown playing guitar and sitting on a bench. With a marble plinth.

---



### 8058: INDIAN BRONZE STATUE OF SHIVA PARVATHI

USD 1,000 - 2,000

Depicting a scene of Shiva and Parvathi holding hand together. H: 12 1/2 in. L: 7 3/4 in. W: 4 in.

---



## INTERNATIONAL FINE ART & ANTIQUES SALE



### 8059: ANTIQUE CHINESE BRONZE FIGURE OF BUDDHA

USD 1,500 - 2,000

In seated position with lotus ruyi propping up the left arm. Possibly Yuan dynasty. H: 10 1/4 in.

---



### 8060: CHINESE FAMILLE VERTE ROULEAU VASE

USD 300 - 350

Beautifully painted with beauties in a garden scene, with inscription on the back. Four-character mark to read Yonghua Tang on the bottom. H: 17 1/2 in.

---



### 8061: CHINESE BLUE AND WHITE MEIPING VASE

USD 300 - 500

H: 18 in. W: 10 in.

---



### 8062: 19TH CENTURY CHINESE BLUE AND WHITE VASE

USD 300 - 500

Beautifully painted with foo lions amongst blossoming peonies and scrolling leaves all around the body. H: 17 in.

---



### 8063: JAPANESE BRONZE FIGURE OF A GENERAL

USD 200 - 400

Cast with great details, of a Japanese general dressing in a traditional armor.

---



### 8064: OIL PAINTING ON CANVAS OF AFTERNOON PICNIC TIME

USD 300 - 500

Giltwood framed. Depicting a scene of two young lady and a little girl happily playing in the forest and picking beautiful flowers. H: 16 in. L: 12 in.

---



### 8065: OIL PAINTING ON CANVAS OF MOTHER AND BABY

USD 500 - 800

A woman in a green dress and jewelry, playing with a naked baby. H: 12 in. L: 16 in.

---



### 8066: OIL PAINTING ON CANVAS OF LADIES IN HERAM

USD 500 - 800

Two ladies are happily chatting in the bedroom. One girl is sitting on the edge of the bed, the other one is lying on the bed. H: 12 in. L: 16 in.

---

## INTERNATIONAL FINE ART & ANTIQUES SALE



### 8067: PAIR OF DUTCH OIL ON CANVAS PAINTINGS

USD 300 - 500

Both of the paintings depict city scene, and framed. One of the paintings has the artist's signature to read Chele on lower right.

---



### 8068: 19TH CENTURY BRITISH OIL PAINTING

USD 500 - 800

Framed, depicts a beautiful landscape. Hand signed by Tirol L.S. H: 5 in. L: 8 1/2 in.

---



### 8069: WATERCOLOR DRAWING OF A WINDMILL ON A FARM

USD 300 - 400

Giltwood framed, of 20th century, depicts a windmill and a house in countryside. H: 6 1/4 in. x L: 8 1/4 in.

---



### 8070: FRAMED OIL PAINTING ON CANVAS, OF A LANDSCAPE

USD 300 - 500

Signature on bottom right. H: 8 1/4 in. L: 14 in.

---



### 8071: 19TH CENTURY DUTCH SCHOOL OIL PAINTING

USD 800 - 1,200

Dutch Golden Age painting was informed by a number of artistic influences, including the landscapes and village scenes of Pieter Bruegel the Elder, the work of the anonymous "Master of The Small Landscapes," and the Northern European Renaissance artists (such as Jan van Eyck, Albrecht Dürer, and Hieronymus Bosch and Utrecht Caravaggism). However, it was primarily a reflection of the Dutch Golden Age's cultural, economic, and scientific domination of the era.. H: 7 1/4 in. L: 10 1/2 in.

---



### 8072: PAIR OF JAPANESE CLOISONNE VASES

USD 800 - 1,000

Each painted with a crane in a pond with blossoming flowers, with a beautiful sky blue background. Both are in perfect conditions. H: 7 1/4 in.

---



### 8073: SET OF FIVE BOHEMIAN GLASSES

USD 300 - 400

Each glass is raised on a tall stem, beautifully decorated with gilt details.

---

## INTERNATIONAL FINE ART & ANTIQUES SALE



### 8074: JAPANESE CLOISONNE VASE WITH HEXAGONAL BODY

USD 200 - 300

The sides of the body with alternating panels of dragons and phoenixes. The dragons chasing a flaming pearl; the phoenixes with multicolor feathers. The top of the body with a scrolling floral pattern on a dark yellow background. H: 7 1/2 in.



### 8075: GERMAN LIDDED KETTLE

USD 100 - 200

Decorated on the body with a group of people in a restaurant setting. Carved marks on the bottom. H: 15 7/8 in.



### 8076: HAND CARVED BAMBOO FIGURE OF A OLD MAN

USD 200 - 300

With crutch. H: 11 in.



### 8078: SET OF TEN BOHEMIAN GLASSES

USD 500 - 700

Each glass is raised on a tall stem, beautifully decorated with gilt details.



### 8079: BOHEMIAN OVERLAY STYLE COMPOTE BOWL

USD 100 - 150

Footed in deep ruby and milky white color, the body is enameled. H: 7 5/8 in.



### 8080: CHINESE BRONZE STATUE OF A SEATED GUANYIN

USD 500 - 800

Seated in a flowing gown on a double-lotus platform.



### 8081: CHINESE BRONZE STATUE OF A SEATED GUANYIN

USD 500 - 800

Sitting atop a lotus pedestal, and holding a baby. H: 13 in.



### 8082: CHINESE CARVED JADE-LIKE FIGURE OF A LUOHAN

USD 200 - 300

Holding a cane shaped like a dragon in one hand and a peach in the other. With long beard and billowing robe, light green in tone. H: 6 7/8 in.

## INTERNATIONAL FINE ART & ANTIQUES SALE



**8083: SET OF 10 BOHEMIAN GLASSES**

USD 700 - 800

H:



**8084: CHINESE CARVED SPINACH JADE STANDING GUANYIN**

USD 1,000 - 1,200

She stands, wearing an elegant billowing, hooded robe and holds a bottle with both hands. H: 8 1/8 in.



**8085: PAIR OF HAPPY BUDDHAS BEARING AUSPICIOUS SYMBOLS**

USD 200 - 300

H: 11 7/8 in.



**8086: TWO AMERICAN BRILLIANT CUT GLASS RELISH DISHES**

USD 50 - 100

L: 11 7/8 in.



**8087: 18TH C PAINTING OF A SOCIAL SCENE: A DOWRY MEETING**

USD 5,000 - 8,000

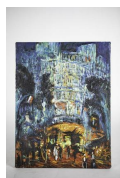
Of 18th century. Depicting a scene likely of a father having a pre-wedding arrangement with a potential husband for his daughter, either for a dowry or a bride token. H: 14 1/8 in. L: 14 1/8 in.



**8088: OIL ON CANVAS PAINTING OF STILL LIFE**

USD 200 - 300

An oil on canvas painting that depicts inanimate objects; a porcelain vase, a lidded caddy, and a plate of fruits. Signed on bottom right to read P. Lebrun. L: 12 in. H: 16 in.



**8089: OIL ON CANVAS PAINTING OF A CITY SCENE**

USD 300 - 400

A modern oil on canvas painting that depicts a city scene at night. Unsigned. L: 12 in. H: 16 in.



**8090: OIL ON CANVAS PAINTING OF A CANAL CITY SCENE**

USD 300 - 400

An oil on canvas painting that depicts a canal city. Signed on bottom right which is illegible. L: 16 in. H: 12 in.

## INTERNATIONAL FINE ART & ANTIQUES SALE



### 8091: OIL ON CANVAS PAINTING OF STILL LIFE

USD 300 - 500

An oil painting that depicts ripe fruits. Signed on bottom right to read K. Mills.

---



### 8092: OIL ON CANVAS PAINTING OF A YOUNG NOBLEMAN

USD 500 - 800

An oil on canvas painting that depicts a young nobleman dressing in a light blue clothing, holding his jacket and a hat. Unsigned. L: 12 in. H: 16 in.

---



### 8093: OIL ON CANVAS PAINTING OF A RURAL VILLAGE

USD 300 - 350

An oil on canvas painting that depicts a rural village in a countryside. Unsigned. L: 16 in. H: 12 in.

---



### 8094: PAIR OF FRENCH SEVRES COBALT BLUE BACKGROUND VASES

USD 1,000 - 1,500

Converted as lamps. Each vase is beautifully hand-painted with a panel of a love scene, and a panel of landscape at the back with gilt details. Flanked on the two sides by lion head ring as handles. Each vase is mounted on a gilt bronze base. Total Height: 25 1/2 in. Vase Only: H: 14 in.

---



### 8095: PARQUETRY SLANT-FRONT DESK

USD 200 - 300

First half 20th Century; the hinged front reversing to a writing surface lined with later gilt-tooled brown leather; Condition: veneer loss to back; scattered areas of lifting to veneer. H: 35 in. W: 28 1/2 in. Depth: 16 in.

---



### 8097: FRENCH SECRETARY DESK

USD 1,000 - 1,800

Raised on four tapering fluted legs. The two front hinged doors opens up to a chest for storage, decorated with two cast metal panels of lover scene. H: 48 in. L: 28 1/2 in. W: 16 in. Property from an exclusive, private collector in Beverly Hills, California.

---



### 8099: GILTWOOD CANAP  WITH AUBUSSON TAPESTRY UPHOLSTERY

USD 800 - 1,200

Beautifully covered with Aubusson tapestry upholstery of blossoming peonies. With ribbon-carved giltwood frame. H: 43 in. L: 57 in. W: 23 in. Property from an exclusive, private collector in Beverly Hills, California.

---



### 8100: FRENCH STAND WITH MARBLE-TOP AND MIRROR

USD 1,000 - 1,500

With a reddish pink-veined marble-top, one lower and one upper shelf. A single drawer with an ormolu pull. Features a mirror, adorned with an oblong hand-painted plaque of depicts a group of nobles. Decorated all around with fine gilt details. H: 47 in. L: 22 in. W: 12 in. Property from an exclusive, private collector in Beverly Hills, California.

---

## INTERNATIONAL FINE ART & ANTIQUES SALE



### 8101: FRENCH PARQUETRY INLAID CARD GAME TABLE

USD 700 - 900

Raised on four cabriole legs, the top is beautifully decorated with parquetry inlaid of a floral bouquet, swivels and unfolds to reveal a dark red felt game surface. A small compartment underneath is revealed when the top is open. H: 30 in. L: 33 in. W: 16 in. Property from an exclusive, private collector in Beverly Hills, California.



### 8102: BEAUTIFUL ENGLISH PARQUETRY INLAID SECRETARY DESK

USD 1,500 - 2,000

Raised on four cabriole legs, with beautiful parquetry inlays, with different drawers and compartments for storage. H: 37 in. L: 39 in. W: 21 in. Property from an exclusive, private collector in Beverly Hills, California.



### 8103: 19TH CENTURY ENGLISH PIETRA DURA SIDE TABLE

USD 500 - 800

Raised by three elegant legs, with baluster shaped central support. The striking top is beautifully painted with blossoming flowers with vivid colors and gilt details. H: 27 in. W: 21 1/2 in. Property from an exclusive, private collector in Beverly Hills, California.



### 8104: OIL ON CANVAS PAINTING OF STILL LIFE

USD 300 - 400

An oil painting that depicts grapes, a porcelain tea caddy and a glass decanter. Unsigned.



### 8107: OIL PAINTING OF A SLEEPING MAIDEN TWO GENTLEMEN

USD 300 - 500

Depicts a maiden falling asleep in a garden making flower crown, with two gentlemen checking up on her. Signature to read L. Rossetti. H: 16 in. L: 12 in.



### 8108: BEAUTIFUL OIL PAINTING OF A MOTHER AND HER CHILD

USD 1,000 - 2,000

Depicts a beautiful mother in a grand red gown sitting in a chair and holding her child on her laps. H: 16 in. L: 12 in.



### 8109: YELLOW FLOWERS HAND SIGNED BY A. BLUM

USD 8,000 - 12,000

Possibly by Alexandra Blum is an artist. Their work was featured in several exhibitions at key galleries and museums, including the Bermondsey Project Space and the Mission Cultural Center for Latino Arts. In Mutual Art's artist press archive, Alexandra Blum is featured in London Art: Alexandra Blum's Dalston Square The Geffrye Museum, a piece from the Londonist in 2012. H: 16 in L: 12 in

## INTERNATIONAL FINE ART & ANTIQUES SALE

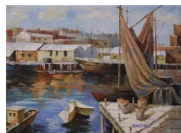


### 8110: OIL PAINTING ON CANVAS OF BOATS

USD 200 - 300

Signature to read Andre Guilium Falcon. H: 12 in L: 16 in

---



### 8111: OIL PAINTING ON CANVAS OF A HARBOR

USD 200 - 300

Signature to read Dalton. H: 12 in L: 16 in

---



### 8112: ENGLISH VICTORIAN INLAID SIDE TABLE

USD 700 - 1,000

Beautiful raised on three elegant legs with ormolu mounts. The baluster shaped central support is flanked by a circular top with beautiful parquetry inlaid design. H: 32 in. W: 16 in. Property from an exclusive, private collector in Beverly Hills, California.

---



### 8113: A FIVE-PIECE CANAP   & FAUTEUILS, AUBUSSON TAPESTRY

USD 3,000 - 5,000

The suite each covered with Aubusson tapestry upholstery of beautiful blossoming bouquets. Giltwood frames, and each is finely decorated with carved floral motif. Property from an exclusive, private collector in Beverly Hills, California.

---



### 8114: FINE ANTIQUE INLAY CENTER TABLE

USD 500 - 700

Raised on four carved cabriole legs, and carved openwork around. Shaped top with marquetry design, flanked by brass rails on two sides. H: 17 in. L: 35 in. W: 19 in. Property from an exclusive, private collector in Beverly Hills, California.

---



### 8115: FRENCH GILTWOOD BERG  RE CHAIR

USD 1,000 - 1,500

Beautifully carved with scrolling vines details on the giltwood frame. Padded back, arms and seat with a loose cushion covered in striped light canary yellow and pastel blue floral silk. H: 48 in. L: 29 in. W: 25 in. Property from an exclusive, private collector in Beverly Hills, California.

---



### 8118: SMALL THAI TAPESTRY

USD 100 - 200

17 1/2 in. x 17 1/2 in.

---



### 8119: FRAMED PAINTING OF A HORSE HEAD BY MR

USD 200 - 400

Framed, a watercolor painting that depicts a horse head. Signature to read MR. H: 6 1/8 in. L: 4 in.

---



## INTERNATIONAL FINE ART & ANTIQUES SALE



### 8120: TWO PORTRAIT PAINTINGS ON BOARD

USD 200 - 300

One depicts a young boy holding fencing swords; another painting depicts a girl in dress holding a basket. L: 7 in. x H: 5 in.



### 8122: SET OF TWO PAINTINGS BY GEO. E. DAVIES

USD 800 - 1,000

Both paintings are framed and depict a village scene. Signature on bottom left of each painting to read Geo. E. Davies. H: 4 1/4 in. x W: 5 7/8 in.



### 8123: FRAMED OIL ON BOARD PAINTING OF A FOREST SCENE

USD 500 - 800

Framed. Titled "The Brook". An oil on board painting that depicts a horse carriage is passing through a river while a man is fishing on a bridge. Signed on bottom right which is illegible. H: 9 in. L: 11 1/2 in.



### 8124: SALLERY F. B., BRITISH (19TH CENTURY)

USD 300 - 500

Magnificent watercolor drawing. Depicts two gentlemen with horses coming walking down the path. Signature on bottom right to read F.B. Sallery 17. H: 5 1/2 in. L: 8 1/2 in.



### 8125: JACK DUDLEY, AMERICAN (1918-1996)

USD 800 - 1,000

Jack Dudley was an American artist who was born in 1918. Jack Dudley's first artwork to be offered at auction was "Child of the Valley" at Cowan's Cincinnati in 2012. The artist died in 1996. H: 5 1/2 in. x W: 5 1/4 in.



### 8126: TWO SMALL ANTIQUE FRAMED OIL PAINTING ON CANVAS

USD 200 - 400

Each painting depicts a nomad with a llama and donkeys out in the nature. Signature to the lower right. L: 11 7/8 in., H: 8 3/4 in.



### 8127: PAIR OF SILVER PLATED CANDLE HOLDERS

USD 50 - 75

With foliate designs decorating each register. Leaves cast around the base. H: 12 in.



### 8128: SILVER-PLATED BOX WITH HINGED COVER

USD 200 - 300

Raised on a base, finely decorated all around the body. Mark on the bottom. H: 6 5/8 in.



## INTERNATIONAL FINE ART & ANTIQUES SALE



### 8129: SET OF EIGHT KUTANI PLATES

USD 500 - 700

Centrally painted with faint clouds, branches, leaves, foliate, flowers and birds on white ground, and surrounded with six large bats on alternating wave, floral, and geometric patterns on the rim. Slightly raised and the bottom decorated and with six-character mark. With orange glaze. Diameter: 8 1/4 in.



### 8130: THAI BRONZE HEAD OF BUDDHA

USD 1,000 - 2,000

Wearing a diadem with a medallion in the center. H: 16 1/4 in. (41cm)



### 8131: LARGE CHINESE POTTERY JAR

USD 300 - 500

Covered overall in a brown glaze. H: 14 1/2 in.



### 8132: GREEN MARBLE TRINKET BOX

USD 150 - 300

Small green marble rectangular lidded trinket box on four short feet. Marked on the bottom. H: 2 1/4 in., L: 4 1/2 in.



### 8134: BEAUTIFUL ANTIQUE OPALINE JUG

USD 300 - 500

In an old rose ombre color, with translucent white stem-like handle.



### 8135: ANTIQUE CHINESE EARTHENWARE WELL-HEAD AND BUCKET

USD 300 - 600

Possibly Han dynasty. The cylindrical body is flanked by an arched handle. H: 10 3/4 in.



### 8136: CHINESE CARVED GREEN QUARTZ

USD 300 - 500

Atop a wooden stand. Qing Dynasty. H: 12 1/4 in.



### 8137: CARVED BAMBOO FIGURE OF A HAPPY BUDDHA

USD 100 - 150

In standing position, with a large round belly and wearing a draping robe. H: 12 1/2 in.

## INTERNATIONAL FINE ART & ANTIQUES SALE



### 8138: CUT GLASS VASE AND CUP

USD 100 - 200

Of one narrow neck vase and one water cup.

---



### 8139: PAIR OF CAST SILVER-PLATED SHEFFIELD CANDLESTICKS

USD 200 - 500

Each with shaped, square based with four cast lions and rococo details. Decorations continues up the column. The circular sconces shaped as a blossoming flower. H: 13 1/2 in.

---



### 8140: PAIR OF BRASS FIREPLACE FENDERS

USD 400 - 500

Each on three legs, with acorn and knop design

---



### 8141: PAIR OF BRONZE CANDLESTICKS LUSTERS

USD 200 - 500

Each is raised on a square, white marble plinth. Seated on top with a detailed, gilt bronze figural group of a boy and a girl, against a leafy background. Flanked by an extended column with a single sconce on top; adorned with a gilt bronze band with crystal drops. H: 16 in.

---



### 8142: CHINESE CARVED STONE HEAD OF A SCHOLAR

USD 800 - 1,000

H: 20 in. W: 10 in.

---



### 8143: CHINESE BLUE AND WHITE SQUARE VASE

USD 200 - 300

Beautifully painted all around the body and on the neck with alternating panels of floral and auspicious objects. H: 22 1/2 in.

---



### 8144: CHINESE BLACK GLAZED POTTERY JAR

USD 200 - 300

With a heavy bottom, tapered to a long, narrow neck with a flared mouth. H: 14 1/8 in.

---



### 8145: CHINESE BLUE AND WHITE HEXAGONAL JAR AND COVER

USD 500 - 800

Painted with figural design of voyaging men. Six-character mark to read Kangxi on the bottom. H: 12 3/4 in.

---

## INTERNATIONAL FINE ART & ANTIQUES SALE



### 8146: CHINESE YELLOW GROUND PORCELAIN VASE

USD 200 - 300

Beautifully decorated with blossoming peonies and other flowers with rockery and birds. Inscriptions on the back. Six-character mark to read Qianlong on the bottom. H: 13 1/8 in.



### 8147: CHINESE BLUE AND WHITE SQUARE JAR AND COVER

USD 200 - 500

Painted with soldiers in a battle. Six-character mark to read Kangxi on the bottom. H: 11 7/8 in.



### 8148: ANTIQUE CHINESE PORCELAIN JAR

USD 500 - 800

Beautifully decorated with a child amidst dense, scrolling leaves with floral blossoms. With a double ring mark on bottom.



### 8149: CHINESE BLUE AND WHITE VASE

USD 2,000 - 3,000

Beautifully painted with blossoming chrysanthemums and scrolling leaves around the body. Flanked by two tubes on the neck as handles. H: 13 1/4 in.



### 8150: LARGE CHINESE BRONZE-MOUNTED PORCELAIN VASE

USD 500 - 800

With floral motif on blue ground, ornately carved/chaised bronze plates decorated the foot, body, neck and mouth of the vase. H: 18 in.



### 8151: PAIR OF CHINESE BRONZE HORSES

USD 500 - 800

H: 14 1/4 in. L: 15 in.



### 8152: CHINESE BLUE AND WHITE DOUBLE GOURD VASE

USD 300 - 350

A double-ring six-character mark to read Zhengde on the bottom. H: 13 1/2 in. W: 7 in.



### 8153: SIX U.S. BICENTENNIAL SOCIETY COMMEMORATIVE PLATES

USD 100 - 150

D: 10 3/4 in.

## INTERNATIONAL FINE ART & ANTIQUES SALE



### 8154: EUROPEAN PORCELAIN VASE

USD 500 - 800

White body painted with family crest.

---



### 8156: PAIR OF GLASS CANDLE HOLDERS

USD 50 - 100

With geometric patterns cut around the base. H: 8 1/2 in.

---



### 8157: ANTIQUE INDIAN BRONZE FIGURE OF GANESHA

USD 200 - 300

H: 7 1/4 in.

---



### 8158: VIENNA GILDED BLUE PORCELAIN VASE

USD 50 - 70

Beautifully decorated with gilded floral details against the mottled blue background. H: 10 5/8 in.

---



### 8159: TALL CYLINDRICAL CERAMIC BRUSH POT

USD 50 - 100

Painted with butterflies throughout. H: 9 in.

---



### 8160: CHINESE IRON RED VASE

USD 500 - 800

With a tapering long neck and a flaring rim. Six-character mark to read Qianlong on the bottom. H: 12 5/8 in.

---



### 8161: CHINESE BLUE GLAZE GARLIC HEAD VASE

USD 300 - 600

With a bulbous body and a long, narrow head. Flanked by a chilong wrapped around the neck under the garlic head mouth. H: 8 3/8 in.

---



### 8163: EARLY 20TH CENTURY BRONZE STATUE

USD 1,800 - 2,200

of the girl sitting with deer on light spinach color marble. H: 10 3/4 in. L: 21 in. W: 9 1/2 in.

---

## INTERNATIONAL FINE ART & ANTIQUES SALE



### 8164: LATE 19TH CENTURY BRONZE STATUE BY PJ MENE

USD 1,000 - 2,000

Depicting the two elk's fighting with their antlers interlocked on rockery. Mark to read 'PJ Mene' and numbered 15. Possibly by Pierre Jules Méné (1810 - 1879). He was a famous French sculptor and animalier, considered as one of the pioneers of animal sculpture in the 19th century. L: 24 in.

---



### 8165: DRAWING OF AN OLD MAN'S PORTRAIT BY OPPENHEIM

USD 700 - 900

Framed, a monochromatic drawing of an old man's portrait, signed on top. Carved details around the frame and a carved name to read J. O. Wikson on the bottom right of the frame. Painting Only: L: 9 1/2 in. H: 13 in. With Frame: L: 12 in. H: 15 1/2 in.

---



### 8166: OIL ON CANVAS PAINTING OF SNOW SKIING SCENE

USD 300 - 350

Depicts two skiers skiing down a snowy slope. Unsigned. H: 20 in. L: 24 in.

---



### 8167: OIL ON CANVAS OF OCEAN WAVES BY B. BERAN

USD 300 - 400

Crashing on the rocky shore. Signature on bottom right to read B. Beran. H: 20 in. L: 28 in.

---



### 8168: OIL ON CANVAS PAINTING OF INSIDE A BARN

USD 100 - 200

With two goats, not signed. H: 19 1/4 in. L: 27 in.

---



### 8169: MARCEL STARY, CANADIAN (1918 -1 962)

USD 500 - 800

An oil painting that depicts a tranquil pond amongst a forest. Signature on bottom left to read M. Stary. Marcel Stary (1918 - 1962) was a Canadian artist. He was born in the former Czechoslovakia and studied Art in Prague. Marcel escaped during the Soviet occupation and came to Montreal, Canada in 1948. He traditionally worked in oil, watercolor and acrylics. His subjects included the landscape and life of the Inuit people in the Arctic and Labrador. H: 18 in. L: 24 in.

---



### 8171: WILLEM FREDERIK NOORDIJK, DUTCH (1887 - 1970)

USD 1,000 - 2,000

An oil on canvas painting that depicts a winter town. Signature on bottom left to read W. Noordijk. Willem Frederik Noordijk (1887 - 1970) was a Dutch painter who was known for landscape paintings. The record sold price for this artist in auction is USD \$1,734 for his work, "Skaters by the City Walls of Naarden," which was sold in 2001. H: 16 in. L: 24 in.

---

## INTERNATIONAL FINE ART & ANTIQUES SALE



### 8172: WILLEM FREDERIK NOORDIJK, DUTCH (1887 - 1970)

USD 1,500 - 1,800

An oil on canvas painting that depicts animals outside of a farm house. Signature on bottom to read W Noordijk. Willem Frederik Noordijk (1887 - 1970) was a Dutch painter who was known for landscape paintings. The record sold price for this artist in auction is USD \$1,734 for his work, "Skaters by the City Walls of Naarden," which was sold in 2001. H: 16 in. L: 24 in.

---



### 8173: MANLY EDWARD MACDONALD RCA, CANADIAN (1889 - 1971)

USD 1,000 - 2,000

A beautiful print-work that depicts a man riding a horse carriage to cross a river. Signature on bottom right to read Manly MacDonald. Manly Edward MacDonald was a well-known Canadian painter, printmaker and educator. His primary medium was oil paint; however, he also worked in pastel, watercolor, etching, drypoint, aquatint and mixed mediums. His subjects included portraits, figures, landscapes, winter scenes, cityscapes, village scenes, farm activity, lakes, rivers, boats and genre. His styles were Realism and Plein Air. His favorite painting location was the countryside around the Bay of Quinte on the north shore of Lake Ontario, near where he was born. The record price for this artist in auction is USD \$16,741 for his work, "BRUCE'S MILL, 10 MILES NORTH OF UNIONVILLE", which was sold in 2014. H: 19 in. L: 24 1/2 in.

---



### 8174: PAIR OF FRENCH SEVRES BLUE GROUND LIDDED VASES

USD 1,500 - 2,000

Of 19th Century, and both urns are converted as lamps. Each urn is flanked by two gilt bronze lion ring handles on the sides; beautifully hand-painted with a cameo of a love scene on the body in the front, and a cameo of a landscape scene at the back. Mounted on a gilt bronze plinth. Total Height: 32 in. Vase Only: H: 16 in.

---



### 8175: JAPANESE FIGURE OF A GEISHA

USD 500 - 700

Wearing a beautiful kimono and a intricate head-piece. In a glass box. With Box: H: 21 in. L: 12 in. W: 10 in. Figure Only: H: 17 1/2 in. L: 8 in. W: 7 in.

---



### 8176: PAIR OF FRENCH SEVRES CRANBERRY RED GROUND VASES

USD 1,500 - 1,800

Converted to lamps. Each vase is beautifully hand-painted with a panel of love scene, and a on the body with exquisite gilt details; against the cranberry red background. Mounted on a bronze plinth. Total Height (of each): 24 3/4 in. Vase Only: H: 18 in.

---



### 8177: FRENCH SEVRES WHITE BACKGROUND PORCELAIN VASE

USD 500 - 800

Converted as a lamp. The white background porcelain vase is finely hand-painted with gilt details of a figural scene around the bulbous body. Mounted on a gilt bronze plinth. Total Height: 27 1/4 in. Vase Only: H: 13 1/4 in.

---



### 8178: FRENCH SEVRES WHITE GROUND VASE, CONVERTED TO LAMP

USD 300 - 500

Converted to lamp. Flanked by gilt bronze lion head handles on the sides. Finely hand-painted with a lover's scene and a landscape scene with gilt details on the bulbous body. Mounted on a gilt bronze plinth. Total Height: 27 3/4 in. Vase Only: H: 14 in.

---

## INTERNATIONAL FINE ART & ANTIQUES SALE



### 8179: 19TH C. FRENCH SEVRES COBALT BLUE BACKGROUND VASE

USD 500 - 1,000

Converted as a lamp. Beautifully hand-painted on the body with a cameo of a love scene in the front; with a cameo of a landscape scene at the back, with gilt details. Mounted on a gilt bronze plinth. Total Height: 29 3/4 in. Vase Only: H: 17 in.



### 8180: FRENCH SEVRES COBALT BLUE BACKGROUND COVERED VASE

USD 300 - 400

Flanked by two gilt bronze high handles on the sides with a face of nymph. Beautifully hand-painted with a cameo of a love scene in the front; and a cameo of a landscape scene on the back. Mounted on a gilt bronze plinth. (Restored) Total Height: 20 in. Vase Only: H: 19 in.



### 8181: GILT BRONZE & WHITE MARBLE LAMP

USD 400 - 600

The circular white marble base is decorated with gilt bronze details. Flanked by a central column with three-arm candelabrum, decorated with a white, cylindrical lamp shade. H: 25 1/8 in.



### 8182: MARCEL STARY, CANADIAN (1918-1962)

USD 500 - 700

Framed, a watercolor painting of a ranch with tents and canoes. Signature on bottom left to read M. Stary. Marcel Stary (1918 - 1962) was a Canadian artist. He was born in the former Czechoslovakia and studied Art in Prague. Marcel escaped during the Soviet occupation and came to Montreal, Canada in 1948. He traditionally worked in oil, watercolor and acrylics. His subjects included the landscape and life of the Inuit people in the Arctic and Labrador. H: 12 in. L: 16 in.



### 8183: NEEDLEPOINT OF A NOBLE WOMAN

USD 100 - 200

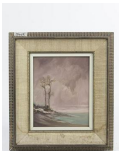
H: 20 3/4 in. L: 21 in.



### 8184: CARVED AND PAINTED WOOD PANEL OF A HUNTING SCENE

USD 300 - 500

Depicts a deer hunting scene. Carved mark on bottom right. H: 12 in. L: 23 3/4 in.



### 8185: OIL ON BOARD PAINTING OF A WINTER LANDSCAPE

USD 200 - 300

Framed. An oil on board painting that depicts a winter landscape, unsigned. H: 10 in. L: 8 in.

## INTERNATIONAL FINE ART & ANTIQUES SALE



### 8186: OIL ON BOARD PAINTING OF A GIRL BY SHLOSSBERG

USD 300 - 500

An oil on board painting that depicts a girl wearing a wide-brimmed hat and a cape. Signature on bottom left to read Shlossberg. H: 20 in. L: 16 in.

---



### 8188: ENGLISH INLAID WOODEN BOX WRITING CASKET

USD 200 - 250

Of rectangular form, the hinged top opening to reveal a secret compartment with folded leather top and smaller compartments for writing implements. H: 7 in. W: 15 3/4 in. Depth: 10 in.

---



### 8189: ANTIQUE VICTORIAN LACQUER BOX WITH COVER

USD 200 - 300

Decorated with openwork against a mottled red background on top of the cover, with a key hole. H: 5 7/8 in. L: 10 1/4 in. W: 6 in.

---



### 8190: CHINESE EXPORT BOWL

USD 100 - 150

Painted with a Chinese character 'shou' in the center meaning longevity. H: 3 1/8 in. D: 10 in.

---



### 8191: SMALL BRONZE FIGURE OF WOMAN PLAYING A LYRE

USD 200 - 300

Gazing up and in a striding position. Atop a base on four short feet. H: 7 in.

---



### 8192: TWO DAINTY FOLIATED GLASS BOTTLES WITH GILT RIM

USD 100 - 300

Each beautifully hand-painted on the bulbous body and neck with floral design matching the foliate rim

---



### 8193: AN ADORABLE PORCELAIN FIGURE OF A DOG

USD 200 - 300

Modeled as a dog lying down and looking back, with white and tan color fur. H: 7 in. L: 13 1/2 in.

---



### 8194: CHINESE BRONZE CENSER WITH PLINTH

USD 500 - 700

Decorated with gilt details of Buddhist scriptures all around the body. The plinth is beautifully decorated with gilt details of water lily. H: 7 1/4 in. W: 7 in.

---



## INTERNATIONAL FINE ART & ANTIQUES SALE



### 8195: PAIR OF CHINESE CARVED STONE FIGURES OF CREATURE

USD 800 - 1,000

In mottled grayish green and brown colors. Carved in great details, with roaring mouths.

---



### 8196: CHINESE BOTTLE VASE OF PEACHES AND FLOWERS

USD 300 - 500

Beautifully painted with panels of figural scene on the bulbous body. Flanked by a long neck, with peaches on two sides. Mark to read Kangxi on the shoulder. H: 27 3/8 in.

---



### 8197: CHINESE CARVED BISQUE PORCELAIN VASE

USD 300 - 600

Decorated in relief of dragons chasing flaming pearl on the bulbous body. Flanked by two chilongs in the neck as handles, with a flaring mouth. H: 26 7/8 in.

---



### 8198: OIL ON BOARD PAINTING OF A JERUSALEM CITY BY CHW

USD 500 - 800

Signature on bottom right to read CHW. H: 18 in. L: 14 in.

---



### 8199: HOLGER JENS SOPHUS JENSEN, DANISH (1900 - 1966)

USD 200 - 300

Framed. Painting on silk. Holger Jens Sophus Jensen was a Danish painter who was born in 1900. H: 10 1/2 in. L: 13 1/2 in.

---



### 8200: FRAMED WATERCOLOR PAINTING OF A CITY STREET SCENE

USD 500 - 800

Framed. A beautiful watercolor drawing of the street shops. Signed on bottom left which is illegible. H: 8 in. L: 10 1/2 in.

---



### 8201: ISRAELI PAINTED PORCELAIN TILE

USD 100 - 150

Framed. A painted porcelain tile that depicts a mother and two children. H: 6 in. L: 6 in.

---



### 8203: MODERN WATERCOLOR PAINTING ON PAPER OF A RACCOON

USD 100 - 200

Framed. A modern watercolor painting that depicts a raccoon and a tureen. Signed on lower right to read Janet Stewart. With Frame: L: 21 in. H: 17 in. Without Frame: L: 16 in. H: 12 in.

---

## INTERNATIONAL FINE ART & ANTIQUES SALE



**8204: AFTER-PABLO PICASSO, "FEMME"**

USD 1,000 - 2,000

Framed. After-Pablo Picasso's line art, titled "Femme". A simple line-work that depicts a lady's body. Signed on lower right to read Picasso. With Frame: L: 20 in. H: 16 1/2 in. Without Frame: L: 11 in. H: 10 in.

---



**8205: WATERCOLOR PAINTING OF A LANDSCAPE WITH COWS**

USD 300 - 500

Framed. A watercolor painting of landscape with cows. Signature on the bottom left to read J.F. Grace. H: 13 1/2 in. L: 18 1/2 in.

---



**8206: ABSTRACT PAINTING ON PAPER BY MARITHE RAY**

USD 300 - 350

An abstract painting that depicts a winter landscape scene. Signature on bottom right to read Marithe Ray 76. H: 18 in. L: 14 in.

---



**8207: WILLIAM SHOWELL, CANADIAN (1903 - 1984)**

USD 500 - 700

An oil painting that depicts a lady in a pink dress. Signature on bottom right to read William Showell 64. William Showell (1903 - 1984) was a Canadian painter, known for landscape, portrait and nude paintings. H: 18 in. L: 13 in.

---



**8208: LARGE CHINESE CARVED JADE PLAQUE**

USD 1,000 - 1,200

In mottled yellowish color, carved with two chilongs on the bottom with a taotie motif. Four carved characters on the plaque meaning "house treasure". H: 11 1/4 in.

---



**8209: SILVER PLATED BOX**

USD 50 - 100

With an inscription to the front and black painted decoration to the sides of the box. L: 6 1/4 in. x W: 3 3/8 in. x H: 1 7/8 in.

---



**8210: ANTIQUE GILT BRONZE FIGURE OF YONTEN GYALPO**

USD 1,000 - 1,500

Cast seated atop a ferocious snow lion in lalitasana. Wearing a wide brimmed lacquer hat. All raised on a double-lotus plinth. H: 10 7/8 in.

---



**8211: 18TH CENTURY JAPANESE KAKIEMON PORCELAIN DISHES**

USD 150 - 250

With heavily enameled flowers in red color, with blue and green enameled leaves. D: 4 3/4 in. x H: 1 5/8 in.

---

## INTERNATIONAL FINE ART & ANTIQUES SALE



### 8212: CHINESE BRONZE VESSEL

USD 2,000 - 3,000

Cast bronze with etched design all over the body of a bulbous vase on fowl base, and a lid with a fowl finial on tripod fowl legs. H: 17 in.

---



### 8213: BRONZE RITUAL VESSEL

USD 800 - 1,200

Finely cast with a pomegranate shaped body, and elaborate handles with rings.

---



### 8214: CHINESE BRONZE FIGURE OF GUAN YU

USD 300 - 800

The god of warriors. H: 10 1/4 in.

---



### 8215: JAPANESE TERRACOTTA TEAPOT

USD 100 - 150

Of late 20th century, decorated with incised landscape. H: 5 in.

---



### 8216: JAPANESE BRONZE INLAY CABINET VASE

USD 100 - 150

With image of cranes in flight under the moon. H: 7 1/2 in.

---

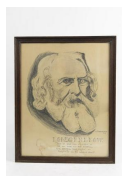


### 8217: JAPANESE PORCELAIN BOWL

USD 50 - 100

Floral designs under the glaze on an orange-red ground.

---

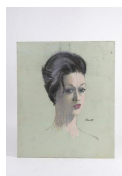


### 8218: DRAWING ON AN OLD MAN PORTRAIT BY M. RAFOLORITCH

USD 300 - 400

Framed. A drawing of an old man's portrait. Signature to read M. Rafoloritch 1978 on lower right. Inscription on the bottom.

---



### 8219: WILLIAM SHOWELL, CANADIAN (1903 - 1984)

USD 200 - 300

Drawing of a lady's portrait. Signature on bottom right to read Showell. William Showell (1903 - 1984) was a Canadian painter, known for landscape, portrait and nude paintings. H: 24 in. L: 20 in.

---

## INTERNATIONAL FINE ART & ANTIQUES SALE



### 8220: WILLIAM SHOWELL, CANADIAN (1903 - 1984)

USD 300 - 500

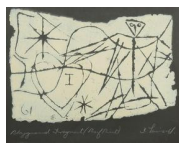
A modern painting on board that depicts a movie scene. Signature on bottom right to read Showell. William Showell (1903 - 1984) was a Canadian painter, known for landscape, portrait and nude paintings. H: 21 1/2 in. L: 18 3/4 in



### 8221: FRAMED WATERCOLOR PAINTING OF A CANAL CITY

USD 500 - 800

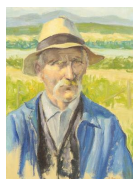
Framed. A magnificent watercolor painting of canal in Belgium. Signed on bottom right which is illegible. H: 11 1/2 in. L: 9 1/2 in.



### 8222: STANLEY LEWIS, CANADIAN (1930-2006)

USD 800 - 1,000

Lithograph, titled "Playground Fragment". Signed on bottom to read S Lewis 61. Stanley Lewis was a Canadian Postwar & Contemporary artist who was born in 1930. Their work was featured in several exhibitions at key galleries and museums, including the National Academy of Design and the Betty Cuninghame Gallery. H: 11 in. L: 14 in.



### 8223: FRAMED PAINTING OF AN OLD MAN BY J. DAMIANI

USD 500 - 700

Framed. An oil painting that depicts an old man who's wearing a hat and standing in an open field. Signature on bottom to read J. Damiani. H: 16 in. L: 12 in.



### 8224: TWO JAPANESE IMARI BOWLS WITH FOLIATE RIMS

USD 50 - 100

On a raised foot. D: 6 7/8 in.



### 8225: FRENCH CHAMPLEVE ENAMEL SEVRES VASE

USD 200 - 300

Pig dragons are zoomorphic forms with a pig-like head and elongated limbless body coiled around to the head and described as "suggestively fetal". H: 3 3/4 in. x W: 2 1/12 in.



### 8226: ANTIQUE CHINESE OCTAGONAL BOWL

USD 50 - 100

Heavily enameled with design of butterflies and clouds in light blue background.



### 8227: SET OF TEN JAPANESE PLATES WITH BIRD MOTIF

USD 300 - 500

Three character mark of Yamada to the bottom. D: 8 3/8 in.

## INTERNATIONAL FINE ART & ANTIQUES SALE



### 8228: TWO CHICKENS WITH FEATHERS MADE OF CUT SEASHELLS

USD 200 - 300

Depicted with one chicken mounting the other. Set upon a wooden stand. Length of base: 11 7/8 in., H: 8 1/2 in.

---



### 8229: BLANC DE CHINE CHINESE PORCELAIN GUANYIN

USD 200 - 250

Wearing a billowy robe and veil, and holding a scroll on her right hand. H:24 1/2 in. (62cm)

---



### 8230: CHINESE FAMILLE ROSE VASE

USD 200 - 300

Body beautifully painted with festive figural theme of women and children in costumes and surrounding with lanterns and decors. Chinese inscription on the back.

---



### 8233: MONGOLIAN MEDICINE CARRIER

USD 50 - 100

With five glass tubes inside the carrier. L:4 1/2 in x W:4 1/2 in.

---



### 8234: CHINESE BRONZE VESSEL

USD 200 - 300

Raised on a straight foot, with a bulbous body and a flaring mouth. Flanked by a handle. H: 7 in.

---



### 8235: ANTIQUE CHINESE YELLOW GROUND DOUBLE GOURD VASE

USD 200 - 300

With a lid. Covered overall in yellow glaze. Five-character mark on the bottom. H: 22 1/2 in.

---



### 8236: RUSSIAN SILVER LIQUOR SET IN ORIGINAL BOX

USD 800 - 1,000

Comprising of a pear shaped decanter with stopper. Matching with six small shot glasses with a round tray. Each piece is decorated with alternating black and silver-color bands. Bottle measures H: 5 5/8 in.

---



### 8237: WILLIAM SHOWELL, CANADIAN (1903 - 1984)

USD 500 - 800

Framed. A sketch drawing of a naked lady. Signature on bottom left to read William Showell. William Showell (1903 - 1984) was a Canadian painter, known for landscape paintings. H: 16 in. L: 12 in.

---

## INTERNATIONAL FINE ART & ANTIQUES SALE



**8238: OIL ON CANVAS PAINTING OF A RURAL TOWN SCENE**

USD 800 - 1,000

Framed. An oil on canvas painting that depicts a mum watching over two girls feeding birds. Not signed. H: 16 1/4 in. L: 22 in.

---



**8239: FRENCH 19TH CENTURY LITHOGRAPH**

USD 200 - 300

Depicts a matchmaking scene that an old lady introducing a young lady to the noble man. Inscription on the bottom. H: 15 1/2 in. L: 20 in.

---



**8240: PIERRE LAWTON, CANADIAN (1933 - )**

USD 500 - 700

Framed, ink on paper drawing that depicts a city street scene. Signature on bottom left to read P. Lawton 20. Pierre Lawton (1933 - ), a French Canadian artist. H: 17 in. L: 13 in.

---



**8241: EBONIZED CARVED WOOD AND PORCELAIN CENTER TABLE**

USD 1,000 - 1,200

Raised on three legs in which each has a carved creature head. Flanked with a tall center column to hold a beautiful hand-painted charger in top center that depicts a lover's scene. With a glass top. H: 27 3/4 in. D: 20 1/4 in. ( only plate 15 in. )

---



**8242: BEAUTIFUL GILTWOOD AND PORCELAIN CENTER TABLE**

USD 1,000 - 1,500

Raised on three curved legs with carved details. Decorated with a beautiful hand-painted porcelain plaque in the top center, titled "Kuss der Wellen (Kiss of the Waves)." Depicts mermaids seducing a man on the boat. Mark on the bottom. Total Height: 30 1/4 in. Total Top Diameter: 15 1/4 in. Diameter of the Plaque Only: 10 3/4 in.

---



**8243: HAND-CARVED MAHOGANY FIRESCREEN**

USD 800 - 1,000

The mahogany wooden frame is beautifully carved rococo details. Framed with a magnificent needlepoint scene of a white parrot, perching on a weaved basket that is full of blossoming flowers. H: 51 1/4 in. L: 28 1/4 in.

---



**8245: MASSIVE MAJOLICA COBALT BLUE BACKGROUND EWER**

USD 1,000 - 1,200

Magnificently hand-painted on the bulbous body with two cameos of immortal scenes with gods and goddesses, against a beautiful cobalt blue background. H: 38 in.

---



**8246: BEAUTIFUL FRENCH GILTWOOD MARBLE-TOP SIDE TABLE**

USD 800 - 1,000

A rectangular yellowish grey-veined marble top above a chest. The hinged front panel with lock opens up to a chest, beautifully adorned with a hand-painted oblong panel of two nobles, surmounted by a carved ribbon-frame, and reticulated woven panels. Finely carved with beautiful entrelac and foliage details, raised on four tapering fluted legs. H: 42 1/2 in. L: 35 1/2 in. W: 36 1/2 in. Property from an exclusive, private collector in Beverly Hills, California.

---

## ***INTERNATIONAL FINE ART & ANTIQUES SALE***



### **8247: ANTIQUE ENGLISH HAND-PAINTED OCCASIONAL TABLE**

USD 1,000 - 1,500

Raised on four legs, with ormolu mounts. Beautifully hand-painted on the side, as well as on top of a lover's scene, with a glass top. H: 22 in. L: 30 in. Property from an exclusive, private collector in Beverly Hills, California.

---



### **8248: FINE ANTIQUE CHINESE EMBROIDERY**

USD 8,000 - 12,000

Late 18th/early 19th century beautiful embroidery work, of museum quality; of gold threads and silk, weaved network of 8 colors on gold silk background. H:66IN X W:40IN

---



### **8249: GROUP OF FOUR CHINESE STONE PENDANTS**

USD 300 - 500

All in different colors and of different designs with magnificent carved details.

---



### **8250: GROUP OF FOUR CHINESE WHITE JADE PIECES**

USD 500 - 700

All carved with great details, two with braided strings.

---