

Artingstall Auctioneers 1874



PRIVATE ESTATE SALE: EXQUISITE ART & DECOR

Sunday - May 1, 2022

PRIVATE ESTATE SALE: EXQUISITE ART & DECOR



8001: WILLIAM WATT MILNE, SCOTTISH (1865 - 1949)

USD 2,000 - 5,000

Framed, depicts a seascape, with some women working on the fishnet. Signed W. W. Milne. William Watt Milne (1865-1949) was a renowned Scottish artist who was popular for his artwork on landscape and rural genre painting. His work can be found in major museums internationally as well as locally in the Norris Museum, St Ives. His paintings have been successfully offered in leading auction houses, including a sale at Sotheby's London for a record price of USD \$14,031 in 2000. H: 11 1/2 in. L: 15 1/2 in.



8002: BEAUTIFUL JAPANESE SATSUMA PLATE

USD 800 - 1,200

With Arabic writing from Quran. Mark on the bottom.

Image unavailable

8003: LARGE CHINESE TWELVE-PANEL FLOOR SCREEN

USD 2,000 - 2,500

Dimensions



8004: LARGE CARVED GILT FRAMED MIRROR WITH RUST FINISH

USD 1,500 - 1,800

Mounted in beveled mirror. With frame: 62 in. x 51 in. Without frame: 48 in. x 36 in.



8005: AFTER-JEANNE BEITZ, FRENCH (1881 - 1965)

USD 3,000 - 5,000

Framed. After-Jeanne Beitz's work, "Lady in White Bonnet." A portrait of a noblewoman in a period dress and an elaborate hat. Jeanne Beitz (1881 - 1965). She was a pupil of Paul Gervais, Jean-Paul Laurens, Henri Royer and Francois Schommer. She then became Societaire des Artistes Francais, exhibited there regularly between 1910 and 1921, obtaining an honorable mention in 1910, a silver medal in 1954 and, in 1959 a gold medal. In 1960, she was classified out of competition. H: 47 in. L: 36 1/4 in.



8006: IMPOSING ENGLISH MAHOGANY CHEST OF DRAWERS

USD 500 - 800

With two small drawers atop 3 large drawers H: 41 1/2 in. L: 40 5/8 in. W: 19 1/2 in.



8007: AFTER-JOAN MIRO, SPANISH (1893 - 1983)

USD 1,500 - 2,500

A lithograph on paper, signature on lower right to read Mir—Joan Mir— (1893 - 1983) was active/lived in Spain, France. He was known for Abstract curvilinear design painting, collage, mural. The record sold price for this artist in auction is USD \$37,064,980 for his work, PEINTURE (f TOILE BLEUE), which was sold at Sotheby's London in 2012. H: 11 in. L: 8 in.

PRIVATE ESTATE SALE: EXQUISITE ART & DECOR



8008: WILLIAM SHOWELL, CANADIAN (1903 - 1984)

USD 100 - 200

Sketch of a group of seated elderly people. Signed to read William Showell. William Showell (1903 - 1984) was a Canadian painter, known for landscape, portrait and nude paintings. L: 10 3/4 in. H: 8 1/2 in.



8009: WILLIAM RICHARDS, BRITISH (19TH CENTURY)

USD 15,000 - 30,000

Giltwood framed. An oil painting that depicts people working on a beach. Signed to read W. Richards. William Richards is a British 19th century artist who is known for marine paintings. The record sold price for this artist in auction is USD \$5,137 for his work, View of Salisbury Cathedral, which was sold in 2007. Without Frame (Painting Only): H: 20 in. x W: 30 in. With Frame: H: 27 1/2 in. x W: 37 in.



8010: LARGE FRAMED CHINESE PAINTING OF GEESE

USD 500 - 800

Signature to read Wu Shan. On gold flecked paper. Depicts four geese amongst white peony flowers and other foliage. Signature to read Wu Shang. H: 24 1/8 in. L: 60 1/4 in.



8011: BEAUTIFUL GILTWOOD AND PORCELAIN CENTER TABLE

USD 1,000 - 2,000

Raised on three curved legs with carved details. Decorated with a beautiful hand-painted porcelain plaque in the top center, titled "Kuss der Wellen (Kiss of the Waves)." Depicts mermaids seducing a man on the boat. Mark on the bottom. Total Height: 30 1/4 in. Total Top Diameter: 15 1/4 in. Diameter of the Plaque Only: 10 3/4 in.



8012: ANTIQUE CHINESE BRONZE FIGURE OF BODHISATTVA

USD 200 - 300

Standing upon a raised hexagonal lotus pedestal and holding a staff across body with both hands. Hair is in topknot secured by an ornamental headdress. H: 12 3/4 in.



8013: LITHOGRAPH OF A BRITISH HORSE RIDING SCENE

USD 200 - 300

A beautiful lithograph that depicts a group of equestrians hanging out on their horses and chatting. H: 13 3/8 in. x W: 18 in.



8014: CHINESE CELADON BOTTLE NECK VASE

USD 500 - 1,000

Thickly formed and molded in raised relief with horizontal string bands around the tall neck. Six-character to read Qianlong on the base. H: 9 1/2 in.

PRIVATE ESTATE SALE: EXQUISITE ART & DECOR



8015: CHINESE MING PERIOD IRON-RED AND GREEN ENAMEL BOWL

USD 2,000 - 5,000

The exterior painted with a motif of lotus flowers, birds, and rabbits. The interior roundel decorated with a single flower. With an unglazed base. On wooden stand. H: 4 in., D: 8 5/8 in.



8016: LARGE CHINESE FRAMED PAINTING OF AN IMPERIAL SCENE

USD 1,500 - 1,800

Framed. A Chinese painting that depicts an Imperial scene. Inscription on the left. H: 7 ft. 3 in. L: 28 in.



8017: CHINESE BLUE AND WHITE LONG-NECKED BOTTLE VASE

USD 300 - 500

Depicting nobles and servants inside a palace hall



8018: JOSEF JOHANN SUSS, AUSTRIAN (1857 - 1937)

USD 600 - 1,000

In a beautiful giltwood frame. Depicts a beautiful girl selling blooming flowers. Signed on the right to read J. Süss. Josef Süss was an Austrian painter who was born in 1857. The record sold price for this artist in auction is USD \$2,656, for his work "großes Gemälde eines alten Strassenmusikers mit Geige und eines kleinen Mädchens", which was sold in 2019.



8019: CHINESE LOTUS COVERED BOWL

USD 200 - 300

Beautifully painted with pink & yellow layered pedals, with gilded finial. Six-character mark to read Yongzheng on the bottom. H: 8 1/4 in. D: 7 in.



8020: 19TH C. JAPANESE HAND-CARVED RED LACQUER CHAIR

USD 500 - 800

Of 19th century. Beautifully hand-carved with details of dragon.



8021: LARGE CHINESE WHITE GLAZED EWER

USD 500 - 1,000

Beautifully decorated in low relief all over. Flanked by a spout and a high handle. H: 35 in. (88.9 cm)



8022: CHINESE ENAMELED PORCELAIN PLATE

USD 200 - 300

Beautifully painted in the center of a seated Lohan.

PRIVATE ESTATE SALE: EXQUISITE ART & DECOR



8023: CHINESE FAMILLE ROSE JARDINIERE WITH TRAY

USD 1,000 - 1,200

Of Republic Period. The body delicately rendered depicting a peach tree with nine fruits hanging amongst many different brightly toned flowers. Large lappet border around mouth rim and a key fret pattern around lipped rim. Large four character mark to the reverse. The base decorated with key fret border and scattered sprigs of lotus flowers. H: 15 in., Diameter: 17 1/8 in.



8024: A PORCELAIN PAINTING, OF A YOUNG GIRL

USD 2,000 - 3,000

Framed. Beautifully painted with a young girl, happily playing with a bird.



8025: JAPANESE SATSUMA VASE

USD 300 - 500

Finely painted with two cameos of children playing against a colorful background with blossoming flowers. Mark on the bottom. H: 2 3/8 in. (6 cm)



8026: FINE JAPANESE SATSUMA FIGURAL VASE

USD 300 - 600

Raised on a short foot with a bulbous shoulder, decorated all around with Japanese figures on the body. Mark on the bottom. H: 7 1/2 in. H: 3 in.



8027: SPINACH JADE-COLOR NEPHRITE BOWL

USD 300 - 500

Semi-translucent with mottled green colors all over. Diameter: 4 in.



8028: EBONIZED CARVED WOOD AND PORCELAIN CENTER TABLE

USD 800 - 1,000

Raised on three legs in which each has a carved creature head. Flanked with a tall center column to hold a beautiful hand-painted charger in top center that depicts a lover's scene. With a glass top. H: 27 3/4 in. D: 20 1/4 in. (only plate 15 in.)



8029: CHINESE PAINTING ON SILK OF WOMEN IN A GARDEN

USD 800 - 1,000

CHING DYNASTY. Depicting two roaming peacocks and five beauties tending to a garden of flowers. H: 13 1/4 in., L: 20 3/4 in.



8030: CHINESE PAINTING ON SILK OF TWO BIRDS

USD 150 - 250

Depicting a pair of small black birds in flight amongst mountains. Mounted on parchment. H: 13 1/4 in., L: 15 1/8 in.

PRIVATE ESTATE SALE: EXQUISITE ART & DECOR



8031: CHINESE UNUSUAL BLUE AND WHITE STEM JAR

USD 500 - 800

With a bulbous body, raised on a tall foot. Painted with a group of beauties around the body. A lot of fire ashes around the body. Mark to read Kangxi on the bottom. H: 7 in.



8032: HAMILTON JAZZ MASTER SEA VIEW DAY DATE QUARTZ WATCH

USD 600 - 700

Original, Hamilton Jazzmaster Seaview Day Date Quartz Men's Watch (Ref: H37511131). NO BOX. Silver-tone stainless steel case with a silver-tone stainless steel bracelet. Unidirectional rotating silver-tone stainless steel with black top ring bezel. Black dial with luminous silver-tone hands and index hour markers. Minute markers around the outer rim. Dial Type: Analog. Luminescent hands and markers. Day of the week and date display at the 3 o'clock position. ETA Caliber 955.122 quartz movement. Scratch resistant sapphire crystal. Pull / push crown. Solid case back. Oval case shape, case size: 42 mm, case thickness: 10.85 mm. Band width: 22 mm, band length: 7.5 inches. Deployment with push button release clasp. Water resistant at 100 meters / 330 feet. Functions: date, day, hour, minute, second. Dress watch style.



8033: HAMILTON KHAKI AVIATION X-WIND AUTO CHRONO WATCH

USD 1,500 - 1,600

Original, Hamilton Men's Khaki X-Wind Automatic Chronograph Men's Watch (Ref: H77616533). NO BOX. Stainless steel case with a brown leather strap. Fixed stainless steel bezel showing drift angle calculator. Black dial with silver-tone luminous hands and Arabic numeral hour markers. Minute markers. Air speed scale around the outer rim. Dial Type: Analog. Luminescent hands and markers. Day of the week and date display at the 9 o'clock position. Chronograph - three sub-dials displaying: 60 seconds, 30 minutes and 12 hours. Hamilton calibre H-21 automatic movement, based upon ETA 7750, containing 25 Jewels, biting at 28800 vph, and has a power reserve of approximately 60 hours. Scratch resistant sapphire crystal. Screw down crown. Half stainless steel / skeleton case back. Round case shape. Case size: 44 mm. Case thickness: 16 mm. Band width: 22 mm. Band length: 8.5 inches. Tang clasp. Water resistant at 100 meters / 330 feet. Functions: chronograph, date, day, hour, minute, second. Khaki X-wind Series. Pilot watch style.



8034: HAMILTON KHAKI NAVY PIONEER AUTO MEN'S WATCH

USD 900 - 1,000

Original, Hamilton Khaki Navy Pioneer Small Second Auto Men's Watch. (Ref: H78465553). NO BOX. Stainless steel case with a brown leather strap. Fixed stainless steel bezel. Silver dial with blue steel spade-shaped hands and black Arabic numeral hour markers. Minute markers. Arabic numeral minute markers (at 5 minute intervals) around the outer rim. Dial Type: Analog. Date display at the 3 o'clock position. Seconds sub-dial above the 6 o'clock position. ETA caliber 2895-2 automatic movement with a 42-hour power reserve. Scratch resistant sapphire crystal. Transparent case back. Round case shape. Case size: 40 mm. Case thickness: 12 mm. Band width: 20 mm. Band length: 7.5 inches. Tang clasp. Water resistant at 100 meters / 330 feet. Functions: date, hour, minute, second. Casual watch style.



8035: HAMILTON KHAKI AVIATION X-WIND AUTO MEN'S WATCH

USD 2,400 - 2,500

Original, Hamilton Khaki Aviation X-Wind Day Date Auto Chrono Men's Watch. (Ref: H77796535). NO BOX. Stainless steel case with a beige cow leather strap. Bi-directional rotating stainless steel bezel. Black dial with silver-tone hands and Arabic numeral hour markers. Minute markers. Cross wind markers around the outer rim. Dial Type: Analog. Luminescent hands and markers. Day of the week and date display at the 9 o'clock position. Chronograph - three sub-dials displaying: 60 second, 30 minute and 12 hours. H-21-Si automatic movement with a 44-hour power reserve. Scratch resistant sapphire crystal. Screw down crown. Solid / transparent case back. Round case shape. Case size: 45 mm. Case thickness: 14.85 mm. Band width: 22 mm. Tang clasp. Water resistant at 100 meters / 330 feet. Functions: chronograph, date, day of the week, hour, minute, second. Casual watch style.

PRIVATE ESTATE SALE: EXQUISITE ART & DECOR



8036: HAMILTON SPIRIT OF LIBERTY AUTO MEN'S WATCH

USD 900 - 1,000

Original. Hamilton American Classic Spirit of Liberty Auto Men's Watch. (Ref: H42415551). NO BOX. Stainless steel case with a brown leather strap. Fixed stainless steel bezel. Silver dial with rose gold-tone leaf-style hands and index hour markers. Minute markers around the outer rim. Dial Type: Analog. Date display at the 6 o'clock position. Hamilton calibre H-10 automatic movement, based upon ETA C07.111, containing 25 Jewels, biting at 21600 vph, and has a power reserve of approximately 80 hours. Scratch resistant sapphire crystal. Pull / push crown. Transparent case back. Round case shape. Case size: 42 mm. Case thickness: 12 mm. Band width: 22 mm. Fold over clasp. Water resistant at 50 meters / 165 feet. Functions: date, hour, minute, second. Casual watch style.



8037: CHINESE BLUE AND WHITE TRIPOD CENSER

USD 300 - 500

Each lobed leg depicts of a man in leisure by the terrace



8038: EARLY 20TH CENTURY BRONZE STATUE BY PJ MENE

USD 1,000 - 2,000

Depicting the two elk fighting with their antlers interlocked on rockery. Mark to read 'PJ Mene' and numbered 15. Possibly by Pierre Jules Mne (1810 - 1879). He was a famous French sculptor and animalier, considered as one of the pioneers of animal sculpture in the 19th century. L: 24 in.



8039: EARLY 20TH CENTURY BRONZE STATUE

USD 1,800 - 2,200

of the girl sitting with deer on light spinach color marble. H: 10 3/4 in. L: 21 in. W: 9 1/2 in.



8040: SET OF TEN BOHEMIAN GLASSES

USD 500 - 700

Each glass is raised on a tall stem, beautifully decorated with gilt details. H: 5 1/4 in.



8041: SET OF SIX BOHEMIAN GLASSES

USD 300 - 500

Each glass is raised on a tall leg, the cobalt blue colored cup is beautifully decorated with elegant gilt details.



8042: SET OF SIX BOHEMIAN GLASSES

USD 400 - 600

Each glass is raised on a tall stem, beautifully decorated with gilt details.

PRIVATE ESTATE SALE: EXQUISITE ART & DECOR



8043: SET OF FIVE BOHEMIAN GLASSES

USD 300 - 400

Each glass is raised on a tall stem, beautifully decorated with gilt details.



8044: SET OF TEN BOHEMIAN GLASSES

USD 700 - 900

Each glass has a splayed leg with a tall stem. Each glass is elegantly decorated with gilt details.



8045: CHINESE BLUE AND WHITE BOWL

USD 300 - 500

Exterior depicting a dragon amidst the clouds and above the waves, interior has double ring along the rim and another on the bottom inside framing clashing waves beneath the clouds.



8046: FLORAL SHAPED SILVER PLATED TRIPOD CENTERPIECE

USD 800 - 1,000

With three suspending floral baskets. The top with a large floral bowl; on three thin tapering feet. Signed. H: 20 1/2 in.



8047: 19TH CENTURY LARGE CARVED GILTWOOD MIRROR

USD 1,000 - 2,000

L: 96 1/2 in. H: 52 in. W: 1 1/2 in.



8048: LARGE CHINESE SPINACH GREEN JADE FIGURE OF LUOHAN

USD 2,000 - 2,500

Wearing long robes and holding a mirror in right hand, rests upon base with carved quilted pattern. Lightly incised with a scattered leaf pattern. H: 40 in.



8049: CHINESE CARVED JADE FIGURAL GROUP

USD 700 - 1,000

In white and green color. Of a phoenix perching on a tree. With a wooden stand. H: 7 1/4 in.



8050: CHINESE SPINACH JADE CARVED DRAGON SCEPTER

USD 300 - 800

With one end in the form of a dragon's head. Of a beautiful deep green tone. L: 6 3/4 in.

PRIVATE ESTATE SALE: EXQUISITE ART & DECOR



8051: TISSOT COUTURIER POWERMATIC 80 MEN'S WATCH

USD 700 - 750

Original. Tissot Couturier Powermatic 80 Men's Watch. (Ref: T035.407.11.051.01). NO BOX. Stainless steel case with a stainless steel bracelet. Fixed stainless steel bezel. Black dial with silver-tone dauphine-style hands and index hour markers. Minute markers around the outer rim. Dial Type: Analog. Date display at the 6 o'clock position. Day of the week display centered on the 12 o'clock position. Tissot Calibre Powermatic 80 (C07.111) Automatic movement, based upon ETA 2824-2, containing 23 Jewels, biting at 21600 vph, and has a power reserve of approximately 80 hours. Scratch resistant sapphire crystal. Pull / push crown. Transparent case back. Round case shape. Case size: 39 mm. Case thickness: 10.8 mm. Band width: 22 mm. Band length: 7.75 inches. Butterfly clasp. Water resistant at 100 meters / 330 feet. Functions: date, day, hour, minute, second. Casual watch style.



8052: TISSOT LE LOCLE AUTO AUTOMATIC COSC MEN'S WATCH

USD 1,200 - 1,300

Original. Tissot Le Locle Automatic COSC Men's Watch. (Ref: T006.408.36.057.00). NO BOX. Rose gold PVD stainless steel case with a black leather strap. Fixed smooth rose gold PVD stainless steel bezel. Black dial with rose gold-tone leaf-style hands and index hour markers. Arabic numerals mark the 3, 6, 9 and 12 o'clock position. Minute markers around the outer rim. Dial Type: Analog. Date display at the 3 o'clock position. ETA Caliber 2824-2 Automatic movement, based upon ETA 2824, containing 25 Jewels, biting at 28800 vph, and has a power reserve of approximately 38 hours. Scratch resistant sapphire crystal. Pull / push crown. Skeleton case back. Round case shape, case size: 39 mm, case thickness: 10 mm. Band width: 19 mm, band length: 7.75 inches. Butterfly clasp. Water resistant at 30 meters / 100 feet. Functions: date, hour, minute, second. Le Locle Series. Casual watch style.



8053: TISSOT HERITAGE VISODATE AUTOMATIC MEN'S WATCH

USD 550 - 650

Original. Tissot Heritage Visodate Automatic Men's Watch. (Ref: T019.430.16.051.01). NO BOX. Stainless steel case with a black leather strap. Fixed stainless steel bezel. Black dial with silver-tone dauphine-style hands and index hour markers. Minute markers around the outer rim. Dial Type: Analog. Day of the week and date display at the 3 o'clock position. ETA caliber 2836-2 automatic movement, based upon ETA 2824-2, containing 25 Jewels, biting at 28800 vph, and has a power reserve of approximately 40 hours. Scratch resistant sapphire crystal. Pull / push crown. Transparent case back. Round case shape. Case size: 40 mm. Case thickness: 12 mm. Band width: 20 mm, band length: 7.75 inches. Deployment clasp. Water resistant at 30 meters / 100 feet. Functions: date, hour, minute, second. Sport watch style.



8054: TISSOT T-RACE THOMAS LUTHI 2019 LIMITED EDITION

USD 700 - 750

Original. Tissot T-Race Thomas Luthi 2019 Limited Edition Men's Watch. (Ref: T115.417.37.057.03). NO BOX. Black and grey PVD stainless steel case with a black and blue rubber strap. Fixed black PVD bezel. Black and blue dial with luminous silver-tone hands and index hour markers. An Arabic numeral appears at the 12 o'clock position. Minute markers. Tachymeter markings around the outer rim. Dial Type: Analog. Luminous hands and markers. Date display at the 3 o'clock position. Chronograph - three sub-dials displaying: 60 second, 30 minute and 1/10th of a second. ETA caliber G10.212 quartz movement. Scratch resistant sapphire crystal. Solid case back. Round case shape. Case size: 47.6 mm. Case thickness: 12.7 mm. Band width: 22 mm. Tang clasp. Water resistant at 100 meters / 330 feet. Functions: chronograph, rattrapante, date, hour, minute, small second. Additional Info: limited edition: 0689/1212.



8055: RADO DIASTAR STAINLESS STEEL ROUND SWISS QUARTZ

USD 800 - 850

Original. Rado Diastar Stainless Steel 36mm Round Swiss Quartz Men's Watch. (Ref: R14341173). NO BOX. Stainless steel case with a stainless steel bracelet. Fixed silver bezel. Black dial with silver-tone hands. Dial Type: Analog. Quartz movement. Round case shape. Case size: 36 mm. Fold over clasp with a push button release. Functions: hour, minute. Dress watch style.

PRIVATE ESTATE SALE: EXQUISITE ART & DECOR



8056: RADO SINTRA BLACK AUTOMATIC MEN'S WATCH

USD 2,800 - 2,900

Original. Rado Sintra Black Automatic Men's Watch. (Ref: R13598152). NO BOX. Platinum-tone ceramic case with a platinum-tone ceramic bracelet. Fixed bezel. Black dial with silver-tone hands and indexes hour markers. Dial Type: Analog. Luminescent hands and markers. Date display at the 6 o'clock position. Rado Calibre 629 (ETA 2892-A2) automatic movement with a 42-hour power reserve. Scratch resistant sapphire crystal. Case size: 34 mm x 30 mm. Rectangle case shape. Hidden push button deployment clasp. Water resistant at 30 meters / 100 feet. Functions: date, hour, minute, second. Additional Info: luminescent hands & markers. scratch resistant watch. Casual watch style.



8057: RADO SINTRA BLACK CERAMIC CHRONO MEN'S WATCH

USD 3,100 - 3,200

Original. Rado Sintra Black Ceramic Chronograph Men's Watch. (Ref: R13477182). NO BOX. Black ceramic case with a black ceramic bracelet. Fixed black ceramic bezel. Black dial with gold-tone hands and stick hour markers. Minute markers around the outer rim. The Rado name appears below the 12 o'clock position. Luminescent hands and markers. Chronograph - three sub-dials displaying: 60 seconds, 30 minutes and 24 hours. Quartz movement. Scratch resistant sapphire crystal. Solid case back. Case dimensions: 32 mm x 29 mm. Case thickness: 10.9 mm. Deployment clasp. Water resistant at 30 meters / 100 feet.



8058: RADO COUPOLE JUBILE MEN'S QUARTZ WATCH

USD 900 - 1,000

Original, Rado Coupole Jubile Men's Quartz Watch. (Ref: R22828715). NO BOX. Stainless steel case with leather bracelet. Sapphire glass with black dial embedded with 4 diamonds at 12, 3, 6 and 9 o'clock position. Dial Type: Analog. Quartz movement. Pull / push crown. Solid case back. Case size: 35 mm. Case thickness: 9 mm. Round case shape. Dress watch style.



8059: RADO INTEGRAL SUPER JUBILE MINI WOMEN'S WATCH

USD 3,500 - 3,600

Original. Rado Integral Super Jubile Mini Women's Watch. (Ref: R20430732). NO BOX. Stainless steel case with silver-tone ceramic and stainless bracelet. Black dial with 4 diamond hour markers. Dial Type: Analog. Quartz movement. Pull / push crown, with titanium double folding clasp with push button. Case size: 18 mm without crown. Case thickness: 5 mm. Rectangular case shape. Dress watch style.



8060: STILL LIFE OIL ON CANVAS PRINT BY HALS YUETER

USD 800 - 1,200

Beautifully giltwood framed. A vividly printwork that depicts thriving fruits and wines. Artist's signature to the bottom left to read Hals Yueter. H: 24 in. L: 36 in.



8061: SKY JONES, AMERICAN (1947 -)

USD 5,000 - 8,000

Framed, a painting of a goddess. Signed to read Whipple, dated 74 on bottom right. Sky Jones was born as Michael Whipple on October 3, 1947 in Salt Lake City, Utah. He graduated from the University of Utah in 1971 with a bachelor degree in art. In 1984, he changed his name to Sky Jones. In 1997, he stopped signing Sky Jones and in 2003, he started signing his art as Siren Bliss. Today, the unassuming and reclusive artist's original works are displayed coast to coast and in the collections of thousands of museums, charities, corporations and private collections. Jones's persistence of principles and standards has placed his art and genius as a beacon in the service of humanity.

PRIVATE ESTATE SALE: EXQUISITE ART & DECOR



8062: LARGE OIL ON CANVAS PAINTING OF A MUSICIAN

USD 500 - 700

Playing cello. Signature on bottom left.



8063: CHINESE BLUE AND WHITE OCTAGONAL MEIPING VASE

USD 500 - 700

With a bulbous shoulder. Each side is beautifully painted with blossoming flowers and trees. H: 18 in. W: 9 in.



8064: PAIR OF WOODEN STANDS

USD 200 - 300

Each is of square shaped and decorated with elegant, carved details.



8065: ARTHUR COX, AMERICAN (19TH CENTURY)

USD 1,000 - 2,000

Giltwood framed, depicts a man walking alone amongst mountain during sunset. Signature to read Arthur Cox. Arthur Cox is an American 19th century artist. His work has been offered at auction multiple times. H: 13 1/4 in. W: 20 in.



8066: ANTIQUE FRAMED LANDSCAPE PAINTING, HENRY CUAPES

USD 2,000 - 3,000

Giltwood framed. Depicts a beautiful landscape under sunset. Signature on bottom right to read Henry Cuapcs. H: 20 in. L: 30 in.



8067: GILTWOOD FRAMED OIL ON CANVAS LANDSCAPE PAINTING

USD 1,200 - 1,500

Giltwood frame. Depicts a beautiful landscape of a countryside house. Signature to read H. Eust. H: 20 in. L: 30 1/4 in.



8068: 14K GOLD RING WITH PEARL AND DIAMOND

USD 500 - 800

Features a pearl and diamonds with 14K gold band. 0.12ct



8069: CHINESE PAINTING OF LOVERS

USD 200 - 600

Named in Chinese Xiang Feng means dating. Depicting a scene of a couple wearing the traditional clothes of Dai sitting together. Signature to the upper right. H: 52 1/2 in. L: 25 3/4 in.

PRIVATE ESTATE SALE: EXQUISITE ART & DECOR



8070: SCROLL PAINTING OF A TIBETAN GIRL

USD 300 - 600

Dressed in a heavy fur coat with two goats. Signature to read Ma Hansong. H: 53 3/8 in., W: 27 in



8071: CHINESE SCROLL PAINTING OF LANDSCAPE

USD 1,000 - 1,500

Possibly by Shan Sui -- Depicting a scene of mountain landscape with river, bridge and fisherman. Inscribed on the upper left, with two artist's seal. H: 53 3/4 in. L: 26 1/2 in.



8072: SET OF TWO SCROLLS

USD 400 - 600

CHINESE SCROLL PAINTING OF PEONY: There are variety of peonies and birds on the painting. Peony represents riches and honor in Chinese culture. Luoyang is a city in Henan province, China, and famous for peony. The title means good scenery in Luoyang. The year on the painting is 1982. CHINESE SCROLL PAINTING OF BEAUTIES: There are two girls in the painting. The elder one is playing a pipa, and the younger one is holding a fan. The painting is entitled a variety of flowers as in Chinese culture, people usually compare girls to flowers. L: 21 1/2 in.(54.5cm) x H: 64 in.(162.5cm)



8073: SKY JONES, AMERICAN (1947 -)

USD 2,000 - 3,000

Lithograph. Titled "Embrace #5". Depicts a couple passionately embracing each other, intertwined with floral blossoms. The piece bears an embossed seal of "From Studio of Michael R Whipple", pencil signed. Sky Jones was born as Michael Whipple on October 3, 1947 in Salt Lake City, Utah. He graduated from the University of Utah in 1971 with a bachelor degree in art. In 1984, he changed his name to Sky Jones. In 1997, he stopped signing Sky Jones and in 2003, he started signing his art as Siren Bliss. Today, the unassuming and reclusive artist's original works are displayed coast to coast and in the collections of thousands of museums, charities, corporations and private collections. Jones's persistence of principles and standards has placed his art and genius as a beacon in the service of humanity.



8074: SKY JONES, AMERICAN (1947 -)

USD 1,500 - 2,000

Lithograph. Titled "Chaperon". Depicts a naked girl with a roaring dragon. The piece bears an embossed seal of "From Studio of Michael R Whipple" and pencil signed. Sky Jones was born as Michael Whipple on October 3, 1947 in Salt Lake City, Utah. He graduated from the University of Utah in 1971 with a bachelor degree in art. In 1984, he changed his name to Sky Jones. In 1997, he stopped signing Sky Jones and in 2003, he started signing his art as Siren Bliss. Today, the unassuming and reclusive artist's original works are displayed coast to coast and in the collections of thousands of museums, charities, corporations and private collections. Jones's persistence of principles and standards has placed his art and genius as a beacon in the service of humanity.



8075: SKY JONES, AMERICAN (1947 -)

USD 1,000 - 2,000

Lithograph. Titled "Dawn". Depicts a beautiful lady under sky full of stars. The piece bears an embossed seal of "From Studio of Michael R Whipple", pencil signed. Sky Jones was born as Michael Whipple on October 3, 1947 in Salt Lake City, Utah. He graduated from the University of Utah in 1971 with a bachelor degree in art. In 1984, he changed his name to Sky Jones. In 1997, he stopped signing Sky Jones and in 2003, he started signing his art as Siren Bliss. Today, the unassuming and reclusive artist's original works are displayed coast to coast and in the collections of thousands of museums, charities, corporations and private collections. Jones's persistence of principles and standards has placed his art and genius as a beacon in the service of humanity.

PRIVATE ESTATE SALE: EXQUISITE ART & DECOR



8076: SKY JONES, AMERICAN (1947 -)

USD 1,000 - 2,000

Lithograph. Titled "The Old Man". The piece bears an embossed seal of "Certificate of Authenticity Studio of Michael R Whipple", pencil signed. Sky Jones was born as Michael Whipple on October 3, 1947 in Salt Lake City, Utah. He graduated from the University of Utah in 1971 with a bachelor degree in art. In 1984, he changed his name to Sky Jones. In 1997, he stopped signing Sky Jones and in 2003, he started signing his art as Siren Bliss. Today, the unassuming and reclusive artist's original works are displayed coast to coast and in the collections of thousands of museums, charities, corporations and private collections. Jones's persistence of principles and standards has placed his art and genius as a beacon in the service of humanity.



8077: JOSEPH GIUNTA, CANADIAN (1911 - 2001)

USD 1,500 - 2,500

Framed. Depicts a countryside road. Signature to read Giunta, dated 46. Joseph Giunta had an artistic career that spanned over 70 years, he was known for both of his styles, realism and gestural abstraction. The record sold price for this artist in auction is USD \$3,219 for his works, "Hiver, Laurentides, Que", which was sold in 2007. H: 18 in. L: 23 3/4 in.



8078: WILLIAM SHOWELL, CANADIAN (1903 - 1984)

USD 500 - 800

Framed. Titled "Young Girl". A pastel on canvas painting of a young girl contemplating. Signature to read William Showell. William Showell (1903 - 1984) was a Canadian painter, known for landscape, portrait and nude paintings. H: 24 in. L: 20 in.



8079: CANADIAN OIL ON CANVAS PAINTING OF A FISHING MAN

USD 250 - 500

Framed, Signature on bottom to read Topham, Thurstan. H: 12 1/4 in. x L: 16 in.



8080: 14K GOLD RING WITH PEARL

USD 500 - 800

Features a pearl with 14K gold band.



8081: STANLEY LEWIS, CANADIAN (1930 - 2006)

USD 800 - 1,000

Framed, a drawing of an old man's portrait. Signed on top right to read LEWIS - 53. Stanley Lewis (1930 - 2006) was known for sculpture and printmaking. He was regarded by many as a national treasure in the contemporary art world. During his 56 year international career he created "poetry in stone," and his prolific body of work is an enormous contribution to art and Canadian culture. As a teacher and mentor, his generosity, energetic personality and wealth of knowledge inspired several generations of artists. His work was featured in several exhibitions at key galleries and museums, including the National Academy of Design and the Betty Cuninghame Gallery. H: 15 1/4 in. L: 21 1/4 in.



8082: CHINESE JADE BRACELET WITH 14K GOLD

USD 700 - 900

The bracelet features different colors of jadeite stones.

PRIVATE ESTATE SALE: EXQUISITE ART & DECOR



8083: FRAMED WATERCOLOR LANDSCAPE PAINTING BY M. ANGUS

USD 300 - 500

Framed. A magnificent watercolor painting of a forest. Signature on the bottom to read M. Angus and dated 1890.



8084: STANLEY LEWIS, CANADIAN (1930 - 2006)

USD 500 - 700

Framed, lithograph titled "Woman with Hat" and numbered 10/50. Pencil signed LEWIS - 61 on the bottom right. Stanley Lewis (1930 - 2006) was known for sculpture and printmaking. He was regarded by many as a national treasure in the contemporary art world. During his 56 year international career he created "poetry in stone," and his prolific body of work is an enormous contribution to art and Canadian culture. As a teacher and mentor, his generosity, energetic personality and wealth of knowledge inspired several generations of artists. His work was featured in several exhibitions at key galleries and museums, including the National Academy of Design and the Betty Cuninghame Gallery. H: 20 1/2 in. L: 12 1/4 in.



8085: 14K GOLD RING WITH BURMESE JADE

USD 1,500 - 2,500

Centering an oval shaped apple green jade, mounted in 14K gold.



8086: PEARL BROOCH WITH 14K GOLD

USD 600 - 800

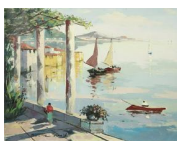
Of 15 pearls circled together mounted in 14K gold.



8087: ANTONIO DEVITY, ITALIAN (1901 - 1993)

USD 400 - 600

Framed, a beautiful oil painting that depicts a small waterfall and a tranquil, flowing river amongst forest. Signed on bottom right. Stamped on the back of the canvas to read A. DeVity. Antonio DeVity was born in Reggio-Calabria in southern Italy. He lived in Naples and later moved to Rome where he was taught by Giacomo Balla, creator of futurism. He lived and worked in Paris, then returned to Naples, opening a studio and producing paintings of France and Italy for the remainder of his career. DeVity's works have won international awards and he is recognized for his bright colors and impressionist treatment of the streets and waterways of Paris and Venice. H: 12 in. L: 24 in.



8088: MODERN OIL ON CANVAS LANDSCAPE PAINTING

USD 500 - 800

Depicts a coastal boardwalk overlooking boats on the sea. Signature on bottom left to read Norelle Amalfi. H: 23 3/4 in L: 30 1/2 in.



8089: WILLIAM SHOWELL, CANADIAN (1903 - 1984)

USD 800 - 1,000

A drawing that depicts a lady dropped on ground. Signature on bottom right to read William Showell 66. William Showell (1903 - 1984) was a Canadian painter, known for landscape, portrait and nude paintings. H: 19 in. L: 24 in.

PRIVATE ESTATE SALE: EXQUISITE ART & DECOR



8090: MARCEL STARY, CANADIAN (1918-1962)

USD 500 - 700

Framed, a watercolor painting of a ranch with tents and canoes. Signature on bottom left to read M. Stary. Marcel Stary (1918 - 1962) was a Canadian artist. He was born in the former Czechoslovakia and studied Art in Prague. Marcel escaped during the Soviet occupation and came to Montreal, Canada in 1948. He traditionally worked in oil, watercolor and acrylics. His subjects included the landscape and life of the Inuit people in the Arctic and Labrador. H: 12 in. L: 16 in.



8091: CHINESE BLUE AND WHITE PORCELAIN RICE BOWL

USD 200 - 400

Depicting of rams amidst pine trees and lush shrubs. Six- character mark on the base.



8092: DRAWING OF THREE MUSICIANS BY J. WOLBERG

USD 200 - 300

Framed, depicts three musicians happily playing music. Signature on lower left to read J. Walbaq. H: 10 in. L: 9 in.



8093: 14K GOLD RING WITH BURMESE JADE

USD 1,000 - 2,000

Centering an oval shaped green jade, mounted in 14K gold.



8094: CHINESE JADEITE PENDANT WITH 14K GOLD

USD 2,000 - 3,000

The translucent jadeite carved as a girl holding peach.



8095: FRAMED OIL ON BOARD PAINTING BY DUPOND

USD 250 - 350

Framed. An oil on board painting that depicts two men and a pineapple. Signature on lower right to read M. Dupond, dated 45. H: 19 in. L: 25 in.



8096: HAROLD LLOYD LYON, CANADIAN (1930 - 2020)

USD 1,500 - 2,000

Framed, depicts a beautiful landscape. Signature on bottom right to read Lyon. Harold Lloyd Lyon (1930 - 2020) was a Canadian painter. Working in oil, his subjects include the northern Ontario landscape, Prairie grain elevators, derelict barns, floral still life, West Coast fishing boats, children and character portraits. However, he is best known for his scenes of cowboys, ranch life and horses in winter. The record sold price for this artist is USD \$4,060, for his work, "NEW SNOW", which was sold in 2010. H: 22 in. L: 28 in.

PRIVATE ESTATE SALE: EXQUISITE ART & DECOR



8097: CHINESE BLANC DE CHINE BRUSHWASHER

USD 200 - 400

In white monochrome with two qiling dragons by the rim



8098: FRANCOIS (CARBUCCIA) CARBU, FRENCH (1896 - UNKNOWN)

USD 800 - 1,000

Framed, depicts a shore scene with waves crashing on the shore. Signature on bottom to read Carbu.Francois (Carbuccia) Carbu, was a French artist who was known for painting of seascapes and boats.H: 21 in. L: 38 1/4 in.



8099: OIL PAINTING OF A CITY SCENE BY CHER HOEVEN

USD 500 - 800

Framed, an oil painting that depicts a city street scene. Signature to read Cher Hoeven. H: 26 in. L: 19 in.



8100: CANADIAN PAINTING OF A CAMPING MAN IN FOREST BY CW

USD 300 - 500

Signature on bottom right to read CW. H: 18 in. L: 14 in.



8101: DUTCH OIL ON CANVAS PAINTING OF A SHEPHERD

USD 1,000 - 2,000

Depicts a shepherd with a flock of sheep on an open field, near the river by H. Ripthat. H: 19 3/4 in. L: 24 in.



8102: SKY JONES, AMERICAN (1947 -)

USD 1,000 - 2,000

Lithograph. Titled "The Invitation". Depicts beautiful nymphs inhabiting in a beautiful blossoming pond with a man. The piece bears an embossed seal of "From Studio of Michael R Whipple", pencil signed.Sky Jones was born as Michael Whipple on October 3, 1947 in Salt Lake City, Utah. He graduated from the University of Utah in 1971 with a bachelor degree in art. In 1984, he changed his name to Sky Jones.In 1997, he stopped signing Sky Jones and in 2003, he started signing his art as Siren Bliss. Today, the unassuming and reclusive artist's original works are displayed coast to coast and in the collections of thousands of museums, charities, corporations and private collections. Jones's persistence of principles and standards has placed his art and genius as a beacon in the service of humanity.



8103: SKY JONES, AMERICAN (1947 -)

USD 2,000 - 3,000

Lithograph. Titled "Twila #3". The piece bears an embossed seal of "Certificate of Authenticity Studio of Michael R Whipple", pencil signed.Sky Jones was born as Michael Whipple on October 3, 1947 in Salt Lake City, Utah. He graduated from the University of Utah in 1971 with a bachelor degree in art. In 1984, he changed his name to Sky Jones.In 1997, he stopped signing Sky Jones and in 2003, he started signing his art as Siren Bliss. Today, the unassuming and reclusive artist's original works are displayed coast to coast and in the collections of thousands of museums, charities, corporations and private collections. Jones's persistence of principles and standards has placed his art and genius as a beacon in the service of humanity.

PRIVATE ESTATE SALE: EXQUISITE ART & DECOR



8104: SKY JONES, AMERICAN (1947 -)

USD 1,000 - 1,500

Lithograph. Titled "Space Warp". The piece bears an embossed seal of "From Studio of Michael R Whipple", pencil signed. Sky Jones was born as Michael Whipple on October 3, 1947 in Salt Lake City, Utah. He graduated from the University of Utah in 1971 with a bachelor degree in art. In 1984, he changed his name to Sky Jones. In 1997, he stopped signing Sky Jones and in 2003, he started signing his art as Siren Bliss. Today, the unassuming and reclusive artist's original works are displayed coast to coast and in the collections of thousands of museums, charities, corporations and private collections. Jones's persistence of principles and standards has placed his art and genius as a beacon in the service of humanity.



8105: BEAUTIFUL BLACK PEARL NECKLACE

USD 1,000 - 2,000

Mounted in 14K gold.



8106: PAIR OF BLACK PEARL EARRINGS

USD 850 - 950

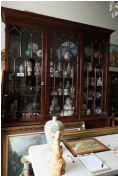
Mounted in 14K gold. Pearl: 10 1/2 mm



8107: CHINESE CARVED JADEITE PENDANT

USD 150 - 300

With 18K gold clasp.



8108: MASSIVE AMERICAN LIBRARY BOOKCASE

USD 1,200 - 1,500

Of early 20th century.



8109: ORMOLU-MOUNTED ANTIQUE FRENCH SHOW CABINET

USD 2,000 - 3,000

Of 19th century. H: 92 1/8 in L: 79 in. W: 22 1/4



8110: ART NOUVEAU CARVED MAHOGANY SIDEBOARD

USD 10,000 - 20,000

With marble top and tile backsplash, and large oval mirror on the top. Two show cabinets on the sides with a glass door and decorated with stained glass. H: 101 1/2 in. L: 146 1/4 in. W: 21 1/4 in.

PRIVATE ESTATE SALE: EXQUISITE ART & DECOR



8111: LARGE CARVED WHITE RIVER JADE BOULDER OF GUANYIN

USD 13,000 - 15,000

Of a white and yellow tones. In a standing position and holding a ruyi scepters, her billowing robe trails around her. Flowers and trees surround her. H: 15 in. Weight: 518 oz.



8112: CHINESE CELADON CRACKLEWARE BOWL

USD 500 - 600

Six-character mark to read Yongzheng on the bottom. H: 4 in. Diameter: 8 in.



8113: CHINESE CELADON VASE

USD 350 - 550

Four-character mark to read Qianlong on the bottom. H: 10 in. W: 6 1/2 in.



8114: ANTIQUE LARGE CHINESE WOODEN ALTAR TABLE

USD 1,800 - 2,200

L: 75 in. (190.5 cm) H: 14 in. (35.6 cm) W: 19 in. (48.3 cm)



8115: ANTIQUE CHINESE CARVED WOOD NESTING SIDE TABLES

USD 300 - 400

Of varying sizes, each with the same openwork design to the apron. Each with humpback stretchers near the base. H: 24 in.



8116: SET OF FOUR CHINESE PORCELAIN HANGING PANELS

USD 500 - 600

Each porcelain panel is beautifully painted with winter landscape, with inscription on top. Enframed in a wooden panel with gilt details. L: 11 1/2 in. H: 28 1/2 in.



8117: THAI TAPESTRY

USD 200 - 300

With magnificent details. L: 36 in. H: 21 1/2 in.



8118: FRENCH NEEDLEPOINT TAPESTRY OF A NOBLE PARTY

USD 200 - 300

In great details, depicts a noble party scene of recital. Signature on bottom right. L: 43 1/2 in. H: 29 1/2 in.

PRIVATE ESTATE SALE: EXQUISITE ART & DECOR



8119: CHINESE POTTERY VASE

USD 200 - 300

Decorated with figures of immortals around the body, flanked by a dragon around the ribbed neck of the vase.H: 19 in. W: 7 in.



8120: PAIR OF CHINESE HORSE FIGURES WITH JADE INLAYS

USD 800 - 1,200

Parts of the body with jade inlays. H: 9 1/2 in. (tallest) L: 12 in. W: 3 in.



8121: CHINESE LANDSCAPE SCROLL PAINTING

USD 500 - 700

L: 6 ft. 4 in.



8122: PAIR OF CHINESE CLOISONNE VASES

USD 200 - 300

Decorated with panels of beautiful plum blossoms and peonies on the body. H: 7 in. W: 3 in.



8123: JAPANESE FIGURE OF A GEISHA

USD 500 - 700

Wearing a beautiful kimono and a intricate head-piece. In a glass box.With Box: H: 21 in. L: 12 in. W: 10 in.Figure Only: H: 17 1/2 in. L: 8 in. W: 7 in.



8124: JAPANESE MEIJI PERIOD ENAMELED FIGURE OF GEISHA

USD 300 - 350

Dressing in a beautiful kimono, painted with enamel of blossoming flowers.H: 15 7/8 in. W: 6 in.



8125: JAPANESE MEIJI PERIOD KUTANI FIGURE OF A BUDDHA

USD 300 - 350

Modeled in a sitting position, dressing in an multi-colored, enameled robe with lotus motif.H: 8 1/2 in.



8126: CHINESE BRONZE CENSER WITH PLINTH

USD 500 - 700

Decorated with gilt details of Buddhist scriptures all around the body. The plinth is beautifully decorated with gilt details of water lily.H: 7 1/4 in. W: 7 in.

PRIVATE ESTATE SALE: EXQUISITE ART & DECOR



8127: CHINESE BRONZE FIGURE OF A FOO LION

USD 200 - 300

H: 8 in. L: 9 in. W: 3 in.



8128: CHINESE JADEITE PENDANT OF A DOUBLE GOURD

USD 150 - 250

Of a lavender and light green hue. A carved monkey is stretched on one side and a leafy branches and flower on the other. A butterfly carved by the waist of the gourd, The reverse is of a bat. In a 14K mark on the hook. H: 1 3/4 in.



8129: SET OF TWO CHINESE BRONZE HORSES

USD 300 - 500

H: 7 in. (tallest) L: 7 in. (longest) W: 1 1/2 in.



8130: PAIR OF CHINESE PORCELAIN SNUFF BOTTLES

USD 500 - 800

Republic period. From a private collection in California. One with peach blossoms and one depicting a man and a child. H: 3 3/8 in.



8131: PAIR OF CHINESE BLUE AND WHITE BOTTLE VASES

USD 400 - 800

Body depicting a figural scene beneath a band of ruyi around the shoulder, and below leaf spears by the neck and a band of tight waved close to the lobed mouth. Each has six-character mark within double rings on the base.



8132: ROUND CHINESE BLUE AND WHITE INCENSE HOLDER

USD 200 - 400

Depicting of figural scenes by the porch and open skies. Six-character mark on the base.



8133: CHINESE BLUE AND WHITE SQUARE VANITY BOX

USD 200 - 400

Depicting of dragons amidst flames and clouds.



8134: THREE ASSORTED CHINESE JADEITE PLAQUES

USD 300 - 500

One is heavily carved with rural scene, two with children and peaches, one with a teacher and a performing student. H: 4 3/4 in.

PRIVATE ESTATE SALE: EXQUISITE ART & DECOR



8135: LARGE CHINESE DRAGON VASE

USD 800 - 1,000

With raised design of dragons chasing flaming pearl on the body, against a dark blue background. Flanked by two chilongs on the neck as handles. Raised six-character mark on the body to read Qianlong.H: 15 7/8 in.



8136: CHINESE CELADON VASE

USD 300 - 350

Flanked by two tubes on the neck as handles. Six-character mark on bottom to read Qianlong.



8137: GROUP OF EIGHT CHINESE ASSORTED ITEMS

USD 200 - 300

Comprising of a bronze pagoda; pair of vessels with high handles; four teapots; and a bronze tripod censer.



8138: CHINESE BLUE AND WHITE MEIPING VASE WITH COVER

USD 500 - 800

Of slender form topped with a domed cover with finial. H: 16 in.



8139: CHINESE JADE BEADED NECKLACE

USD 2,000 - 3,000

Of an apple green tone, with a yellow tassel at the end. L: 22 3/4 in.



8140: ANTIQUE CHINESE CARVED JADE PIG DRAGON

USD 1,000 - 1,500

Pig dragons are zoomorphic forms with a pig-like head and elongated limbless body coiled around to the head and described as "suggestively fetal".H: 3 3/4 in. x W: 2 1/12 in.



8141: JAPANESE IMARI HEXAGONAL BOWL

USD 200 - 300

Painted in the center of a foo lion. A four-character double ring mark on the bottom.H: 5 1/8 in. W: 10 3/4 in.



8142: CHINESE BLUE AND WHITE LIDDED JAR

USD 800 - 1,200

Decorated with a dragon in relief on the body, chasing a flaming pearl.H: 16 in

PRIVATE ESTATE SALE: EXQUISITE ART & DECOR



8143: CHINESE ENAMELED FIGURAL VASE

USD 200 - 300

Beautifully painted in multicolor of a figural scene around the body. Four-character mark on the bottom.H: 18 in. (45.7 cm)



8144: CHINESE DARK BLUE GLAZE GLOBULAR VASE

USD 600 - 800

Four-character mark to read Kangxi on the bottom.H: 14 in. (35.6 cm) W: 8 in.



8145: CHINESE BLUE AND WHITE PORCELAIN VASE

USD 1,000 - 2,000

Painted all around the body with fishes. Flanked by two creature ring handles on the shoulder. H: 9 1/2 in.



8146: CHINESE IRON RED VASE WITH FOO LION HEAD HANDLES

USD 300 - 500

Seal Mark to read Kangxi to the bottom.H: 12 7/8 in.



8147: 18TH C. CHINESE MADE FOR EXPORT CUP AND SAUCER

USD 200 - 300

From an estate in Beverly Hills. With delicate floral motif painted through out. D: 5 1/2 in.



8148: SET OF EIGHT CHINESE PORCELAIN PLATES AND BOWLS

USD 200 - 300

Four plates with floral design, and another four octagonal bowls with sage green interior.



8149: LARGE CHINESE PORCELAIN VASE

USD 800 - 1,200

Decorated around the body with different panels of landscape and figural motifs. Six-character mark to read Qianlong on the bottom. H: 20 in.



8150: LARGE CHINESE BLUE AND WHITE TRIPOD CENSER

USD 300 - 500

Raised on three creature legs, beautifully painted with flowers and birds around the body. Four-character on the back of the short neck, and flanked by two tall handles on the sides.H: 23 in. (58.42 cm)

PRIVATE ESTATE SALE: EXQUISITE ART & DECOR



8151: GILDED FAMILLE ROSE HAND-PAINTED PORCELAIN VASE

USD 500 - 800

Six-character mark to read Tongzhi on the shoulder of the vase. Flanked by a foo lion on top of the lid as finial. H: 29 1/4 in. (74.3 cm)



8152: TALL CHINESE ENAMELED LIDDED TEMPLE JAR

USD 300 - 500

Beautifully painted around the body with birds, trees and blossoming flowers. Flanked by a gilded foo lion atop as finial. H: 25 in. (63.5 cm)



8153: TWO THAI EMBROIDERED TAPESTRIES

USD 200 - 250

Highly detailed with beads and sequins and in various colors. One depicting a horse rider and the other depicting a figure riding an elephant. L: 36 in., H: 24 in.



8154: CHINESE BLUE AND WHITE HEXAGONAL PLANTER

USD 1,000 - 2,000

With a flaring rim. Painted with figural scene in details around the body. H: 19 3/4 in.



8155: HAND-PAINTED CHINESE PORCELAIN VASE

USD 300 - 500

Figural motif all around the body. H: 14 1/4 in.



8156: PAIR OF REPUBLIC PERIOD CHINESE FAMILLE ROSE JARS

USD 1,000 - 2,000

Each is beautifully painted with peacocks amongst blossoming flowers, with inscription on the back, in mirror image. Mark on the bottom to read Qianlong. H: 17 in. (43.2 cm)



8157: CHINESE CELADON AND BLUE ROULEAU VASE

USD 200 - 300

Painted a figural scene around the vase, flanked by two chilongs on the neck as handles. H: 16 3/4 in. (42.5 cm)



8158: ANTIQUE CHINESE HAND PAINTED ROULEAU PORCELAIN VASE

USD 300 - 600

Painted with a figural scene on the body, with inscription on the back. Mark on the bottom. H: 18 1/2 in. (47 cm)

PRIVATE ESTATE SALE: EXQUISITE ART & DECOR



8159: LARGE EM & CO. FLOWER PLATE

USD 300 - 500

Beautifully painted with blossoming flowers all around the plate. Mark on the bottom.



8160: MULTI-PANELED VASE WITH FLORAL DESIGN

USD 200 - 300

Fitted with gilt by the foot, body, and mouth, the body decorated with floral motif throughout. H: 16 7/8 in.



8161: A CHINESE GOLDEN POWDER GLAZED VASE

USD 3,000 - 5,000

Moulded in high relief of dragons chasing pearl above sea waves throughout the body all the way to its trumpet neck. H: 23 in.



8162: ANTIQUE CHINESE CARVED WOOD STATUE OF A GUANYIN

USD 1,000 - 2,000

In long flowing gown, her hair in high bun, and standing on double pedestal. H: 40 in.



8163: CHINESE BLUE AND WHITE MEIPING VASE

USD 300 - 500

Finely painted with panels of figural scenes around the body. H: 17 in. (44 cm)



8164: CHINESE BLUE AND WHITE BOTTLE VASE

USD 300 - 500

The globular body rising to a tall cylindrical neck with a slightly flaring rim. A pair of dragon shaped handles on the side of the neck. Six character mark of Zhizheng. H: 16 1/4 in.



8165: PAIR OF CHINESE FAMILLE ROSE VASES

USD 800 - 1,200

With a pair of elephant shaped handle. Body painted with Chinese beauties. H: 21 1/8 in.



8166: CHINESE BLUE AND WHITE HEXAGONAL TEAPOT WITH LID

USD 300 - 500

Painted around the body with flowers and auspicious objects. Flanked by a long sprout and a high handle. H: 17 in.

PRIVATE ESTATE SALE: EXQUISITE ART & DECOR



8167: CHINESE BLUE AND WHITE JAR

USD 300 - 500

Depicting of boys playing in the field. With appliques of beast heads on each side.



8168: CHINESE FAMILLE ROSE VASE

USD 300 - 500

Raised on a splayed foot, beautifully painted with warriors around the body as well as on the neck. Six-character mark to read Daoguang on the bottom. H: 16 3/4 in.



8169: CHINESE FAMILLE ROSE VASE

USD 500 - 700

Beautifully painted with cranes around the body and blossoming flowers around the neck under a flared rim. Mark to read Daoguang on the bottom.



8170: CHINESE CARVED BAMBOO FIGURE OF A GUANYIN

USD 300 - 500

Dressing in a flowing robe, with left hand pouring out holy water from a vase. With a foo lion guarding beside her. H: 14 1/2 in.



8171: JAPANESE BALUSTER LIDDED JAR

USD 200 - 300

Beautifully decorated with interspersed large and small leafy blooms, against a dark blue background. H: 14 1/8 in.



8172: 19TH CENTURY CHINESE LIDDED FAMILLE ROSE JAR

USD 200 - 300

Finely painted with a figure scene around the body. H: 12 3/4 in.



8173: CHINESE PORCELAIN FIGURAL VASE

USD 200 - 300

Depicts a garden scene all around the body as well as on the neck. Six-character mark to read Kangxi on the bottom. H: 14 7/8 in.



8174: CHINESE PORCELAIN HEXAGONAL VASE

USD 200 - 300

Raised on short foot, with a flared mouth. Decorated with panels of figural scenes on the body along with panels of roosters around the neck. H: 14 1/2 in.

PRIVATE ESTATE SALE: EXQUISITE ART & DECOR



8175: SMALL CHINESE POTTERY EWER

USD 200 - 300

Flanked by a handle and a spout around the shoulder. With ribbed design all over the ewer. H: 7 1/4 in.



8176: ANTIQUE INDIAN BRONZE FIGURE OF GANESHA

USD 200 - 300

H: 7 1/4 in.



8177: CHINESE CARVED JADE FIGURE OF GUANYIN

USD 2,000 - 3,000

With a serene expression and standing atop of a double-lotus pedestal. H: 12 7/8 in.



8178: PAIR OF CHINESE BRONZE HORSES

USD 500 - 800

H: 14 1/4 in. L: 15 in.



8179: CHINESE BLACK GLAZED POTTERY JAR

USD 200 - 300

With a heavy bottom, tapered to a long, narrow neck with a flared mouth. H: 14 1/8 in.



8180: CHINESE YELLOW GROUND PORCELAIN VASE

USD 200 - 300

Beautifully decorated with blossoming peonies and other flowers with rockery and birds. Inscriptions on the back. Six-character mark to read Qianlong on the bottom. H: 13 1/8 in.



8181: CHINESE BLUE & WHITE AND IRON RED GLOBULAR VASE

USD 300 - 500

Beautifully painted with different sets of pattern all around the body. Flanked by two mystic creature ring handles on the shoulder. H: 15 1/2 in.



8182: CHINESE FAMILLE ROSE JAR

USD 500 - 800

With a bulbous body rising to a straight neck. Painted with antiques and auspicious fruit. H: 13 3/4 in.

PRIVATE ESTATE SALE: EXQUISITE ART & DECOR



8183: ANTIQUE 19TH C. SANG DE BOEUF OCTAGONAL VASE

USD 500 - 1,000

Four-character mark on the bottom to read Yongzheng. H: 17 1/2 in.



8184: CHINESE CELADON AND BLUE PORCELAIN VASE

USD 300 - 700

Beautifully painted with flowers and two birds perching on rockery on the body. H: 15 3/4 in.



8185: CHINESE YUAN-STYLE BLUE AND WHITE MEIPING VASE

USD 200 - 300

Painted with a figural scene all around the body. H: 16 7/8 in.



8186: ANTIQUE CHINESE BRONZE TRIPOD VESSEL

USD 1,000 - 2,000

Raised on three legs, flanked by two handles. H: 8 1/8 in.



8187: CHINESE BRONZE SEATED GUANYIN

USD 300 - 500

With one hand in Vitarka mudra. The other hand is holding a vase. Sitting on a double lotus pedestal. H: 16 3/4 in.



8188: A GILT BRONZE FIGURE OF A TIBETAN BUDDHA

USD 500 - 800

Finely cast seated in dhyanasana on a double-lotus pedestal, the hands held in dharmachakramudra holding a pair of Vajras. H: 13 1/4 in.



8189: CHINESE EXPORT BOWL

USD 100 - 150

Painted with a Chinese character 'shou' in the center meaning longevity. H: 3 1/8 in. D: 10 in.



8190: FLAMBE-COLOR OVOID PORCELAIN VASE

USD 200 - 300

H: 10 3/4 in.

PRIVATE ESTATE SALE: EXQUISITE ART & DECOR



8191: CHINESE BLUE AND WHITE PHOENIX TAIL VASE

USD 300 - 600

Designed with landscape in cartouche panels.H: 12 1/4 in.



8192: ANTIQUE BRONZE TRIPOD VESSEL

USD 200 - 300

With ring handles H: 3 3/8 in.



8193: ANTIQUE CHINESE FAMILLE ROSE ROOSTER PLATE

USD 200 - 300

Magnificently painted in the center of roosters amongst garden rocks and blossoming flowers. Mark on the bottom.D: 8 3/4 in.



8194: CHINESE CARVED SPINACH JADE STANDING GUANYIN

USD 1,000 - 1,200

She stands, wearing an elegant billowing, hooded robe and holds a bottle with both hands. H: 8 1/8 in.



8195: PAIR OF HAPPY BUDDHAS BEARING AUSPICIOUS SYMBOLS

USD 200 - 300

H: 11 7/8 in.



8196: CHINESE CARVED SPINACH JADE BEAUTY

USD 200 - 300

Attached to carved wood stand. H: 6 1/4 in.



8197: PAIR OF CHINESE ENAMELED PORCELAIN HANGING VASES

USD 300 - 500

Each vase is painted with a figural scene with inscription. Each vase has a four-character mark on the back to read Qianlong.H: 7 in. x W: 5 in.



8198: CHINESE ENAMELED PORCELAIN JARDINIERE

USD 500 - 700

Beautifully painted with scene of children playing outdoor around the jardiniere. With a wide rim and a carved hole on the bottom.H: 13 1/2 in.

PRIVATE ESTATE SALE: EXQUISITE ART & DECOR



8199: CHINESE JUNYAO VASE WITH PURPLE SPLASH

USD 200 - 300

With a ribbed body and a slightly flared rim.H: 6 1/4 in.



8200: CHINESE PEACH BLOOM GLAZED JAR WITH LID

USD 200 - 300

Of a bulbous form, flanked by a small finial atop of the lid.H: 10 in. x W: 12 in.



8201: CHINESE FAMILLE ROSE CHARGER

USD 350 - 550

Of round Chinese charger depicting phoenixes and peonies. H: 15 in.



8202: CHINESE BLANC DE CHINE FIGURE OF GUANYIN

USD 500 - 800

Three marks to the back. H: 20 3/4 in.



8203: CHINESE BLUE AND WHITE LANDSCAPE VASE

USD 500 - 700

Beautifully painted with a landscape scene on the body, flanked by two handles on the neck. H: 23 1/2 in.



8204: CHINESE BRONZE JAR WITH COVER

USD 3,000 - 5,000

Of well-potted Hu form raised on a tapered foot, flanked by a twin mask loop ring handles, the globular body encircled by two wide bands of etched design. Below, incised upright leaves around the flaring neck; the domed cover surmounted with three pierced latches. H: 11 5/8 in.



8205: CHINESE IRON RED FISH VASE

USD 300 - 500

Decorated with a blue and white fish against the dark red background.H: 9 1/2 in.



8206: CHINESE JUNYAO DISH

USD 200 - 300

L: 5 1/2 in. H: 1 3/4 in.

PRIVATE ESTATE SALE: EXQUISITE ART & DECOR



8207: CHINESE PORCELAIN JAR

USD 200 - 300

Beautifully painted with blossoming flowers on the body. H: 8 1/8 in.



8208: CHINESE SANG DE BOEUF VASE

USD 500 - 800

Raised on a splayed foot, with a flaring mouth. Flanked by two tubes on the neck as handles. H: 15 in.



8209: TIBETAN BRONZE CAST OF A SCEPTER

USD 1,800 - 2,200

With carved three faces on the top and three faces (carving of three elephant heads, each piece is a symbol of power which has been used for entrance in the house)



8210: JAPANESE 19TH CENTURY BRONZE BASE KORO AND COVER

USD 1,200 - 1,500

With silver and gold inlaid on garden setting in a globular body raised on three upright legs, flanked with loop handles issuing from lion's head to the sides, and a Hsi-hsi seating on the top of the lid as a finial. H: 11 3/8 in.



8211: ITALIAN INLAID WOODEN MANTEL CLOCK

USD 800 - 1,000

Finely decorated with gilt bronze. H: 21in.



8212: BEAUTIFUL SILVER-PLATED TANKARD

USD 500 - 800

With raised design of children figures in relief all around the body, depicting a scene of picking grapes from vines for wine making. Flanked by a high handle, a spout and a hinged cover with a child holding a bundle of wheats as finial. H: 9 1/2 in.



8213: PAIR OF FRENCH SEVRES COBALT BLUE BACKGROUND VASES

USD 1,000 - 1,500

Converted as lamps. Each vase is beautifully hand-painted with a panel of a love scene, and a panel of landscape at the back with gilt details. Flanked on the two sides by lion head ring as handles. Each vase is mounted on a gilt bronze base. Total Height: 25 1/2 in. Vase Only: H: 14 in.



8214: SILVER-PLATED TANKARD

USD 500 - 800

With a beautiful design in relief of a wine making scene around the body with raised figures of immortals picking grapes, making wine. Flanked by a high handle and a hinged cover with a child figure as finial. H: 13 in.

PRIVATE ESTATE SALE: EXQUISITE ART & DECOR



8215: EBONIZED WOOD AND PORCELAIN CENTER TABLE

USD 1,000 - 2,000

Raised on three curved legs with beautiful gilt bronze details. With a finely hand-painted porcelain charger on the top center that depicts a maiden bidding farewells to ships, with a glass top. H: 28 in. D: 21 1/4 in. (only plate D: 15 1/2 in.)



8216: FRENCH SEVRES PORCELAIN VASE MOUNTED AS LAMP

USD 600 - 1,000

Beautifully hand-painted with a love scene. Painted on the neck and the bottom of the splayed feet with gilt details against a cobalt blue background. Flanked by two gilt bronze ring handles on the sides and mounted on a gilt bronze plinth. Total Height: 33 in. Vase Only: 14 1/2 in.



8217: FRENCH SEVRES SKY BLUE BACKGROUND LIDDED VASE

USD 300 - 600

Beautifully hand-painted with a panel of a love scene with a panel of landscape scene on the body with gilt details; against a beautiful light blue background. Flanked by two gilt bronze lion-head ring handles. Mounted on a bronze plinth. (Lid is restored). Total Height: 19 in. Without Plinth: 17 1/2 in.



8218: PAIR OF FIVE-BRANCH BRONZE CANDELABRA

USD 300 - 500

Each with a fluted, circular base. The fluted column is flanked by five upswept arms with floral shaped sconces. Decorated with a crystal column in the top center. H: 13 1/2 in.



8219: REED & BARTON SILVER-PLATED CENTERPIECE

USD 700 - 1,000

Raised on a circular base with rococo details. Extended with reticulated column which flanked by two candlesticks on the sides with floral sconces. Seated on top center with a glass bowl. H: 15 in.



8220: MAGNIFICENT LARGE MAJOLICA VASE

USD 2,000 - 3,000

Mounted with pierced paw-footed bases, handles and rims. Beautifully painted with multi-color, raised enamel of a noble warrior, blowing a horn. Signed on the body to read A. Cebanglle. Flanked by two lion head ring handles. H: 26 1/2 in.



8221: FRENCH SEVRES COBALT BLUE BACKGROUND COVERED VASE

USD 300 - 400

Flanked by two gilt bronze high handles on the sides with a face of nymph. Beautifully hand-painted with a cameo of a love scene in the front; and a cameo of a landscape scene on the back. Mounted on a gilt bronze plinth. (Restored) Total Height: 20 in. Vase Only: H: 19 in.

PRIVATE ESTATE SALE: EXQUISITE ART & DECOR



8222: PAIR OF FRENCH SEVRES CRANBERRY RED GROUND VASES

USD 1,500 - 1,800

Converted to lamps. Each vase is beautifully hand-painted with a panel of love scene, and a on the body with exquisite gilt details; against the cranberry red background. Mounted on a bronze plinth. Total Height (of each): 24 3/4 in. Vase Only: H: 18 in.



8223: 19TH C. FRENCH SEVRES COBALT BLUE BACKGROUND VASE

USD 500 - 1,000

Converted as a lamp. Beautifully hand-painted on the body with a cameo of a love scene in the front; with a cameo of a landscape scene at the back, with gilt details. Mounted on a gilt bronze plinth. Total Height: 29 3/4 in. Vase Only: H: 17 in.



8224: MAGNIFICENT GILT BRONZE MANTEL CLOCK

USD 800 - 1,200

With a gilt bronze case with great details, clock dial with roman numeral markings. Adorned with a figure of a nobleman sitting on top, sitting on a tree trunk, and playing with a bird. H: 18 in.



8225: PAIR OF FRENCH SEVRES BLUE GROUND LIDDED VASES

USD 1,500 - 2,000

Of 19th Century, and both urns are converted as lamps. Each urn is flanked by two gilt bronze lion ring handles on the sides; beautifully hand-painted with a cameo of a love scene on the body in the front, and a cameo of a landscape scene at the back. Mounted on a gilt bronze plinth. Total Height: 32 in. Vase Only: H: 16 in.



8226: FRENCH SEVRES WHITE GROUND VASE, CONVERTED TO LAMP

USD 300 - 500

Converted to lamp. Flanked by gilt bronze lion head handles on the sides. Finely hand-painted with a lover's scene and a landscape scene with gilt details on the bulbous body. Mounted on a gilt bronze plinth. Total Height: 27 3/4 in. Vase Only: H: 14 in.



8227: GILT BRONZE & WHITE MARBLE LAMP

USD 400 - 600

The circular white marble base is decorated with gilt bronze details. Flanked by a central column with three-arm candelabrum, decorated with a white, cylindrical lamp shade. H: 25 1/8 in.



8228: MAGNIFICENT GILT BRONZE MANTEL CLOCK

USD 800 - 1,200

Gilt bronze clock case with magnificent details and raised on scrolling feet. Clock dial with roman numeral markings; and adorned with a figural group on top of lovers. H: 18 1/2 in.



8229: FRENCH SEVRES WHITE BACKGROUND PORCELAIN VASE

USD 500 - 800

Converted as a lamp. The white background porcelain vase is finely hand-painted with gilt details of a figural scene around the bulbous body. Mounted on a gilt bronze plinth. Total Height: 27 1/4 in. Vase Only: H: 13 1/4 in.

PRIVATE ESTATE SALE: EXQUISITE ART & DECOR



8230: WOODEN AND BRONZE FIGURE OF A CHILD

USD 300 - 600

Sitting on top of the wooden base covered with a rug and holding a mirror. H: 22 1/2 in. W: 22 1/2 in.



8231: PAIR OF ANTIQUE CRYSTAL LUSTERS, CONVERTED AS LAMPS

USD 500 - 700

Converted as a pair of electric lamps. With two glass covers and crystal drops. H: 17 in.



8232: BEAUTIFUL ROYAL DOULTON PORCELAIN PLATE

USD 200 - 300

Mounted with a silver rim with mark. Beautifully hand-painted in the center and around the borders with colorful birds, against a purplish blue background. Marks on the bottom to read 8215; and Royal Doulton England. Diameter: 11 1/2 in.



8233: BEAUTIFUL FRENCH NEEDLEPOINT OF A HUNTING SCENE

USD 200 - 300

Giltwood framed. The needlepoint depicts a hunting scene amongst a forest with dogs and birds with great details. With Frame: L: 21 in. H: 21 in.



8234: 19TH C. OBLONG-SHAPED PORCELAIN JARDINIERE

USD 1,400 - 1,800

Beautifully hand-painted around the porcelain jardiniere with children playing; flanked by two lion-head ring handles on two sides. With the original metal lining. The rim is chipped. L: 20 in. Depth: 7 in.



8235: CHINESE BLUE AND WHITE WATER VESSEL

USD 300 - 600

Depicting a figural scene by the court grounds.



8236: OIL PAINTING ON CANVAS OF A PERSIAN WOMAN

USD 1,000 - 2,000

A lady in Persian dress, sitting on the chair, playing with her hair. H: 16 in. L: 12 in.



8237: RICHARD G. LOWE, AMERICAN (20TH CENTURY)

USD 600 - 800

Lithograph signed Richard G. Lowe, and dated. Without Frame: H: 13 1/2 in. x W: 9 1/2 in. Without Frame: H: 29 in. x W: 24 in.

PRIVATE ESTATE SALE: EXQUISITE ART & DECOR



8238: FRAMED OIL ON CANVAS STILL LIFE PAINTING

USD 800 - 1,000

Beautifully framed. An oil on canvas painting that depicts blossoming flowers in vibrant colors. Signed on bottom left which is illegible. H: 36 in. L: 24 in.



8239: FRAMED OIL ON CANVAS PAINTING OF CANAL

USD 1,000 - 1,500

With few gondolas. Signature on the lower right. H: 24 in., L: 36 in. [Dimension without frame]



8240: PIERRE LAWTON, CANADIAN (1933 -)

USD 100 - 200

A watercolor drawing on paper of empty boats. Signed on bottom right to read PLawton 64. Pierre Lawton (1933 -), is a French Canadian artist. L: 24 in. H: 18 in.



8241: WATERCOLOR PAINTING OF A RIVER SCENE

USD 300 - 500

A watercolor drawing on paper of a riverbank scene, with a house on one side. Pencil signed on bottom right which is illegible. L: 24 in. H: 20 in.



8242: LEO ROTH, ISRAELI (1914 - 2002)

USD 1,500 - 2,000

Depicts numerous human figures in an abstract form. Leo Roth (1914-2002), also known as Lior Roth, was an Israeli painter, born in 1914 in Austria-Hungary. In 1920, Roth moved to Germany and, in 1933, immigrated to Palestine. He studied at the École des Beaux-Arts in Paris and completed frescoes in Italy and France in the 1950s. Roth first settled in Tel Aviv, then moved to Kibbutz Kinneret, then finally to Kibbutz Afikim where he remained until his death. He served as Director of the Art Academy of the Kibbutzim. In 1959, he was awarded the Jordan Valley Prize for Painting. Roth exhibited in the United States, Israel, Mexico, Spain, Holland, Sweden, and Denmark. He died in 2002. Roth's work was influenced by Cubism and bears much in common with the work of compatriot painter Naftali Bezem. His colourful canvases contain biblical imagery and references to early Israeli pioneer culture. The record sold price for this artist is USD \$6,900 for his work, The Shear, which was sold at Montefiore in 2015. H: 9 in. L: 6 1/2 in.



8243: FRAMED OIL PAINTING ON CANVAS OF FOREST

USD 500 - 800

Framed. Depicting a beautiful landscape of a creek with foliage and trees, and mountains in the distance. Signature on the left bottom which is illegible. L: 20 in., H: 24 in.



8244: OIL ON CANVAS PAINTING OF CLASSICAL RUINS

USD 300 - 500

H: 40 in. L: 30 in.

PRIVATE ESTATE SALE: EXQUISITE ART & DECOR



8245: WINTER LANDSCAPE DRAWING BY R. R. PICARD

USD 300 - 500

A drawing of a winter landscape under a beautiful sunset. Signed on bottom right to read R. R. Picard, dated 1953.L: 28 in. H: 21 in.



8246: OIL PAINTING OF LANDSCAPE

USD 700 - 900

An oil painting that depicts houses amongst mountains. Unsigned.L: 48 in. H: 24 in.



8247: OIL ON CANVAS PAINTING OF A LADY BY S. FOURNIER

USD 500 - 800

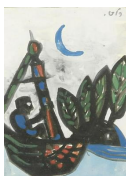
An oil on canvas painting that depicts a lady leaning against a wall. Signature on bottom left to read S. Fournier 74.H: 30 in. L: 24 in.



8248: FRAMED OIL PAINTING ON CANVAS OF LANDSCAPE

USD 500 - 700

Framed. A beautiful oil painting of a landscape. Signed on bottom right to read K. Isbrandt.With Frame: L: 38 in. H: 32 1/2 in. Without Frame: L: 29 in. H: 23 1/2 in.



8249: LEO (LIOR) ROTH, ISRAELI (1914 - 2002)

USD 1,000 - 2,000

Depicts a man sailing in a small boat under moonlight. Signature on top right.Leo (Lior) Roth (1914 - 2002) was an Israeli painter who was born in 1914. Roth's work was influenced by Cubism and bears much in common with the work of compatriot painter Naftali Bezem. His colorful canvases contain biblical imagery and references to early Israeli pioneer culture.The record sold price in auction is USD \$6,900 for his work "The Shear", which was sold in 2015.H: 4 3/4 in. L: 3 1/2 in.



8250: ACRYLIC PAINTING OF SMALL CONCERT BY J. ROYBAL

USD 200 - 300

Depicting a scene of five boys playing music instruments. Signature to read J. Roybal to the bottom right. H: 24 in. L: 20 in.



8251: OIL ON CANVAS PAINTING OF A CITY STREET SCENE

USD 300 - 500

Framed. An oil on canvas painting that depicts a city street scene. Unsigned.With Frame: L: 25 1/2 in. H: 22 in.Without Frame: L: 19 1/2 in. H: 15 1/2 in.

PRIVATE ESTATE SALE: EXQUISITE ART & DECOR



8252: SIMON KARCZMAR, POLISH (1903 - 1982)

USD 800 - 1,200

Simon Karczmar is an artist. The artist's work has been offered at auction multiple times. Sold at Matsart Auctioneers & Appraisers, Jerusalem in 2005. Born in Warsaw, Poland, in 1903, Simon Karczmar studied art in Paris, where he lived for twenty years. Although he left France for Israel in 1962, most of his work evokes his experiences in Eastern Europe. In this series of images known collectively as Shtetl, Karczmar draws inspiration from his childhood memories of the vacations he spent at his grandfather's house in Lithuania. The word shtetl is Yiddish for little town and refers to the villages with significant Jewish populations that could once be found throughout Eastern Europe. The nostalgia of Karczmar's renderings contrasts with the darker views of life for Jews revealed in the photographs by Vishniac and drawings of Lilien. While the photographs in The Vanished World seem to emphasize the deprivation experienced by Jews in the years leading up to World War II, Karczmar depicts similar scenes yet focuses on the sense of community and tradition. H: 8 in. L: 12 in.



8253: HERMAN HEIMLICH, CANADIAN (1904 - 1986)

USD 800 - 1,000

Framed, an oil on board painting that depicts a room with a balcony. Signature on bottom right to read H. Heimlich 61. Herman Heimlich (1904 - 1986), was a Canadian artist. His works were featured in an exhibition at the Art Museum University of Toronto, Justina M. Barnicke Gallery. H: 28 1/2 in. L: 24 1/2 in



8254: FRAMED OIL PAINTING OF A MOSQUE BY VERRES G.

USD 1,000 - 2,000

Framed. An oil painting that depicts a mosque. Signature on bottom right to read Verres G. H: 20 in. L: 24 in.



8255: FRAMED OIL ON CANVAS PAINTING, OF A LANDSCAPE

USD 250 - 350

Framed, an oil painting that depicts some boats on a beach, with houses at the background. Signature to read Geo S Masse. H: 18 in. L: 24 in.



8256: OIL PAINTING BY CHRISTOPHER STEFANOFF

USD 1,000 - 1,200

Framed, an oil painting that depicts a bare tree amongst forest. Signed on the upper right side to read Chr Stefanoff, dated 1952. H: 18 1/4 in. L: 24 1/4 in.



8257: OIL PAINTING L. BURCHFIELD

USD 300 - 400

Signature to read as L. Burchfield. H: 20 in. L 24 in.



8258: OIL PAINTING ON CANVAS OF TWO BOYS BY CHER HOEVEN

USD 500 - 700

An oil on canvas painting of two boys; one is lying down on the ground, and the other one is leaning against a door. Signed to read Cher Hoeven

PRIVATE ESTATE SALE: EXQUISITE ART & DECOR



8259: OIL ON BOARD PAINTING OF STILL LIFE BY Y. LANNY

USD 300 - 500

An oil on board painting that depicts an abundance of ripe fruits on table with chalices. Signed by Y. Lanny.



8260: OIL ON CANVAS PAINTING OF A DOG AND A WHITE CAT

USD 200 - 300

Framed. An oil on canvas painting of a dog and a white cat at a backyard. Signature on bottom right to read Carla Pettit.



8261: OIL PAINTING OF A BLACKSMITH BY SHLOSSBERG

USD 300 - 500

Framed. An oil painting on canvas depicts a blacksmith forging a metal piece. Signature to read Shlossberg.



8262: BERNARD POTHAST, DUTCH (1882 - 1966)

USD 5,000 - 7,000

Bernard Pothast was a Dutch painter who was born in 1882. The record sold price for this artist in auction is USD \$40,845 for "The new dress," which was sold in 2000.



8263: OIL ON BOARD PAINTING OF A GIRL BY SHLOSSBERG

USD 500 - 700

Framed, an oil on board painting that depicts a beautiful girl with braids. Signature on bottom right to read Shlossberg. H: 17 1/2 in. L: 13 1/2 in.



8264: OIL ON CANVAS PAINTING OF A WINTER LANDSCAPE

USD 500 - 800

Framed. An oil on canvas painting that depicts a winter landscape scene. Signed on bottom left to read His.



8265: OIL PAINTING ON CANVAS OF AN INDIGENOUS GIRL

USD 200 - 300

In a giltwood framed. Signed on bottom right to read Stone.



8266: OIL PAINTING BY THOMAS WHITTLE THE YOUNGER

USD 300 - 500

Framed. Depicts of figures tending chicken in a pastoral landscape. Signed to read T. Whittle, and dated 1871.

PRIVATE ESTATE SALE: EXQUISITE ART & DECOR



8267: OIL ON CANVAS PAINTING OF A LANDSCAPE SCENE

USD 200 - 300

Framed. Signed on bottom left to read Y. Dino.



8268: OIL PAINTING OF A FALL LANDSCAPE

USD 300 - 400

Framed. An oil painting that depicts a fall forest. Signed on lower right to read Wini Myers.



8269: PAIR OF FRAMED PAINTINGS OF EUROPEAN STREET SCENE

USD 300 - 500

Both are framed, depict European street scenes. Pencil signed on the bottom left. H: 13 in. L: 10 in.



8270: ANTAL PŹCZELY, HUNGARIAN (1891 - 1956)

USD 800 - 1,200

An oil on canvas painting that depicts ladies gathering and playing cards. Signed on bottom. Antal PŹczely was a Hungarian painter who was known for figural and landscape paintings. The record sold price for this artist in auction is USD \$4,251 for "Magazinul de antichita?i," which was sold in 2021.



8271: PAINTING, ZVI EHRMAN, POLISH (1903 - 1993)

USD 500 - 800

Framed. An oil on canvas that depicts a city street scene. Signature on bottom left to read Ehrman Zvi. Zvi Ehrman was a Polish painter who was known for painting. The record sold price for this artist in auction is USD \$1,208 for his work "Jewish Boy in Cyprus Internment Camp," which was sold in 2015.



8272: PAINTING, ZVI EHRMAN, POLISH (1903 - 1993)

USD 500 - 800

Framed. An oil painting that depicts a city street scene. Signed on bottom left to read Zvi Ehrman. Zvi Ehrman was a Polish painter who was known for painting. The record sold price for this artist in auction is USD \$1,208 for his work "Jewish Boy in Cyprus Internment Camp," which was sold in 2015.



8273: FRAMED CHINESE INK DRAWING OF VEGETABLES

USD 500 - 800

Framed. A Chinese ink drawing of cabbage and mushrooms, with inscription on left. Signature to read Kuchan, dated 1980. Li Kuchan (1898-1983) was a master painter, calligrapher and educator of art. He studied with Xu Beihong and Qi Baishi, who considered Li, as the best student. H: 11 in.(28cm) W: 14 in.(35.5cm)

PRIVATE ESTATE SALE: EXQUISITE ART & DECOR



8274: OIL ON CANVAS PAINTING OF A PARISIAN STOREFRONT

USD 300 - 500

Framed. An oil on canvas painting that depicts storefront. Signature to read Jean Pierre Altman. 24 in. (H) x 20 in. (L).



8275: FRAMED OIL PAINTING OF BOATS

USD 300 - 600

Signature to read P. Seatun. H: 24 in L: 36 in



8276: NORMAN ROCKWELL, AMERICAN (1894 - 1978)

USD 5,000 - 7,000

Framed, titled "She's my Baby". A lithograph that depicts a boy and a girl. Numbered 124/200 and signed on bottom right to read Norman Rockwell. Norman Rockwell (1894 - 1978) was an American painter and illustrator. His works have a broad popular appeal in the United States for their reflection of American culture. Rockwell is most famous for the cover illustrations of everyday life he created for The Saturday Evening Post magazine over nearly five decades. The record sold price for the original piece of this artist in auction is USD \$46 million for his work, "Saying Grace" which was sold in 2013. H: 27 in L: 20 in



8277: CHINESE FRAMED PAINTING OF A LANDSCAPE

USD 1,800 - 2,500

Signature to read Li Xiongcai, dated Ding Mao (1987). Li Xiongcai (1910-2001) is equally skillful at painting figures, landscapes and flower & birds. He has carried on the traditions of the Lingnan School. During the long period, Lingnan made innovations in technique and developed its own style. He paints with bold fluid sweeps of the brush, creating an imposing atmosphere and suggesting great majesty and splendor. People has named and honored his works as "Li's Landscapes" or "Li's Pines". H: 28 3/8 in.(72cm) x W: 18 3/4 in.(47.5cm)



8278: FRAMED OIL PRINT OF PEACOCKS AND CHICKENS

USD 1,200 - 1,500

Framed. A beautiful painting of two majestic peacocks with chickens and chicks. Unsigned. H: 24 in L: 36 in



8279: THREE HAND PAINTED TRANSLUCENT PORCELAIN PLAQUES

USD 500 - 700

Emotional motifs: plaque on the left depicts a woman saying goodbye to her husband and son as they join other soldiers going off to battle; middle plaque depicts a young woman helping an elderly woman sew; plaque on the right depicts a man and woman in a museum, the man visibly moved by a particular piece. Stamped "PPM 1302" on verso. H: 7 1/8 in. x W: 5 5/8 in.



8280: FRAMED OIL PAINTING OF A GARDEN SCENE

USD 200 - 300

No signature could be found. H: 36 in. L: 48 in.

PRIVATE ESTATE SALE: EXQUISITE ART & DECOR



8281: OIL PAINTING ON CANVAS OF A NOBLE WOMAN

USD 600 - 800

Giltwood framed. Depicting a scene of a noble woman toasting, in a beautiful dancing dress. H: 16 in. W: 12 in.



8282: OIL PAINTING ON CANVAS OF A MOTHER AND BABY

USD 500 - 800

Depicts a noble woman sitting on a luxury chair, playing with a baby on her arm. H: 16 in. L: 12 in.



8283: FRAMED WATERCOLOR PAINTING OF A CITY SCAPE.

USD 500 - 800

Framed. A watercolor painting that depicts a cityscape. Signed on the bottom in Hebrew. H: 6 3/4 in. L: 8 1/2 in.



8284: OIL PAINTING ON CANVAS OF LANDSCAPE

USD 250 - 550

An oil on canvas painting that depicts a view of a bridge cross the river of a small town. Signature on bottom right to read Leifton. H: 24 in. L: 36 in.



8285: STILL LIFE OIL ON CANVAS PAINTING

USD 100 - 200

A beautiful oil on canvas painting that painted with vivid tones, depicts blossoming flowers in a vase on a table. H: 24 in. L: 16 in.



8286: OIL PAINTING ON CANVAS OF LANDSCAPE

USD 300 - 500

An oil on canvas painting that depicts a view of countryside, with boats flow on the river. Signature on bottom right to read Leifton. H: 24 in. L: 36 in.



8287: OIL PAINTING OF LAKE SHORE SCENE BY D. DALTON.

USD 300 - 500

An oil on canvas painting that depicts a lake shore scene with many ships docking. Signature on bottom right to read D. Dalton. H: 24 in. L: 36 in.



8288: OIL PAINTING ON CANVAS OF BLOOMING FLOWERS

USD 300 - 500

A beautiful oil on canvas painting that depicts a basket-full of blooming flowers. Signature on bottom right to read Plebalin. H: 24 in L: 36 in.

PRIVATE ESTATE SALE: EXQUISITE ART & DECOR



8289: OIL PAINTING ON CANVAS OF SEASHORE

USD 400 - 800

An oil painting that depicts a seashore scene, surrounding by some green trees. Signature on bottom right to read Leifton. H: 24 in. L: 36 in.



8290: OIL PAINTING OF A BEAUTIFUL GARDEN BY W. TODD

USD 500 - 800

An oil painting that depicts a beautiful garden. Signature on bottom left to read W. Todd. H: 24 in. L: 36 in.



8291: TIBETAN GILTBRONZE SEATED BUDDHA

USD 7,000 - 8,000

Seated on a lotus pedestal. Beautifully decorated with precious stones all around. H: 12 in. W: 12 in.



8292: CHINESE WOOD ALTAR TABLE

USD 500 - 800

With elaborately carved openwork aprons. H: 35 in. W: 43 1/2 in.



8293: ANTIQUE TIBETAN GILT BRONZE HANGING FRAME

USD 1,000 - 3,000

With elaborately carved openwork aprons. H: 35 in. W: 43 1/2 in.



8294: CHINESE CARVED BRONZE ROUND BOX WITH COVER

USD 800 - 1,200

With a Yuan Shikai Silver Dragon Dollar Coin design inlaid on the cover. Marked Hong xian Yunanian. H: 1 1/4 in. D: 3 in.



8295: CHINESE CARVED STONE FIGURE OF HE XIANGU

USD 200 - 300

Modeled as He Xianggu, one of The Eight Immortals. Dressing in a flowing gown and holding lotus flower. H: 8 in.



8296: PAIR OF CHINESE CARVED WOOD JARDINIÈRES

USD 500 - 800

Finely carved wooden flower jardinières with stands. Carved in relief of flowers scrolls all over the body. H: 35 in.

PRIVATE ESTATE SALE: EXQUISITE ART & DECOR



8297: LARGE CHINESE SIX-PANEL FLOOR SCREEN

USD 1,000 - 1,500

Beautifully decorated with a garden scene with beauties and children relaxing. In perfect condition. L: 86 in. x H: 72 1/2 in.



8298: OIL ON CANVAS PAINTING OF A COAST SCENE

USD 300 - 500

Framed. An oil on canvas painting that depicts ocean waves crashing on coast. Signed on bottom right to read George K. Payne. With Frame: L: 48 1/2 in. H: 28 1/2 in. Without Frame: L: 40 in. H: 20 in.



8299: OIL ON CANVAS PAINTING OF POTTED DAISIES

USD 100 - 200

Giltwood framed. An oil on canvas painting that depicts potted, blooming daisies. Signed on bottom right to read R. Paramault. With Frame: L: 23 1/2 in. H: 29 1/2 in. Without Frame: L: 17 1/2 in. H: 24 in.



8300: OIL ON CANVAS PAINTING OF A SEACOAST

USD 100 - 200

Giltwood framed. Signed on bottom right to read Bettijon. With Frame: L: 47 1/2 in. H: 28 in. Without Frame: L: 40 in. H: 20 1/2 in.
