

Artingstall Auctioneers 1874



SINGLE OWNER'S COLLECTION, NO RESERVE SALE

Sunday - October 2, 2022

SINGLE OWNER'S COLLECTION, NO RESERVE SALE



8001: CHINESE MAROON RED AND BLUE SHALLOW DISH

USD 500 - 700

Centrally depicting three fishes against a maroon ground with floral motif. Rim with a border of scrolls and inscriptions. H: 3 in. D: 16 1/4 in.



8002: CHINESE AMBER-COLORED SEAL STAMP

USD 350 - 550

Depicting of an imposing dragon guarding its pearl, atop a carved base. H 4 3/4 in,



8003: A CHINESE CLOISONNE MIRROR

USD 200 - 300

Depicting colorful flowers on blue ground. D: 7 1/2 in.



8004: A CHINESE WOODEN TRAVELLING BOX

USD 350 - 550

Has three small rectangular drawers, and matching metal cabinet doors and handle. H: 6 3/4 in. L: 6 3/4 in. W: 4 3/4 in.



8005: A FOLIATE-RIMMED CLOISONNE MIRROR

USD 250 - 350

A maroon-ground mirror, decorated with colorful flowers. Green patina on the back. D: 9 in.



8006: A CHINESE CARVED STONE PLAQUE

USD 300 - 500

Of mottled brown color, carved with great details of mystic creatures. H: 8 in. L: 6 in.



8007: A BOOK OF OLD CHINESE SKETCHES AND SCRIPTS

USD 500 - 700

Decorated in magnificent details. H: 8 1/2 in. L: 6 in.



8008: CHINESE JADE DAGGER BLADE, WITH STORAGE BOX

USD 350 - 550

Ornamental, with slit in the middle, and blade with various stylized inscriptions. With a wooden box. L: 12 7/8 in. W: 3 1/4 in.

SINGLE OWNER'S COLLECTION, NO RESERVE SALE



8009: CHINESE BRONZE STANDING GUANYIN

USD 550 - 750

With green patination all over. Guanyin with its robe and bun stands on a double lotus throne, one hand posing in a halt, while the other holding an ingot. H: 15 1/2 in.



8010: CHINESE ORNAMENTAL STONE DAGGER BLADE

USD 250 - 350

Of mottled reddish brown color, with a wooden box. L: 14 1/2 in.



8011: ASIAN METAL DAGGER

USD 300 - 400

Size: H: 13 in.



8012: CHINESE BRONZE MIRROR

USD 250 - 350

Carved in great details and decorated with gilt accents. D: 7 1/2 in.



8013: CHINESE BRONZE MIRROR

USD 200 - 300

Carved in great details, D: 6 in.



8014: CHINESE BRONZE MIRROR

USD 200 - 300

Carved in great details. D: 7 in.



8015: CHINESE METAL SPEAR

USD 200 - 300

With etched Chinese characters. L: 11 1/2 in.



8016: CHINESE JADE RUYI SCEPTER

USD 250 - 350

With cursive handle and foliate scepter head, L: 8 1/4 in.

SINGLE OWNER'S COLLECTION, NO RESERVE SALE



8018: RECTANGULAR CHINESE YELLOW JADE PLAQUE

USD 300 - 500

Carved in great details of a horse carriage. With a wooden box. H: 6 in. L: 16 3/4 in.



8019: CHINESE BRONZE DAGGER

USD 250 - 350

With stylized symbols. L: 15 3/4 in.



8020: CHINESE BRONZE MIRROR

USD 200 - 300

Carved in fine details. D: 8 in.



8021: CHINESE BEAD BRACELET, WITH BOX

USD 150 - 250

With a wooden box. L: 10 3/4 in.



8022: CHINESE BRONZE DAGGER

USD 250 - 350

With various etchings on the blade. With a wooden box. L: 15 3/4 in.



8023: CHINESE BRONZE MIRROR

USD 200 - 300

Carved in magnificent, fine details. D: 9 1/2 in.



8024: CHINESE BRONZE MIRROR

USD 200 - 300

Featuring phoenixes and dragons within a border of scrolls. D: 9 1/2 in.



8025: CHINESE JADE BANGLE

USD 200 - 300

With ribbed design. D: 3 in.

SINGLE OWNER'S COLLECTION, NO RESERVE SALE



8026: CHINESE CARVED JADE STONE

USD 150 - 250

Of a ruyi head and peach above a raised wave H: 4 3/4 in. L: 3 1/2 in.



8027: CHINESE DAGGER WITH HANGING TASSEL

USD 200 - 300

An unusual Chinese dagger decorated with hanging ornament at the end. H: 6 1/4 in. L: 6 in.



8028: CHINESE WOODEN JEWELRY BOX

USD 550 - 750

Top opens upward, while the two front doors open to reveal two square drawers on top, and a more slender bottom drawer. H: 10 in. L: 9 1/2 in. W: 6 3/4 in.



8029: CHINESE MAROON RED AND BLUE SHALLOW DISH

USD 500 - 700

Centrally painted with blossoming flowers against the beautiful maroon red background. Six-character mark on the outer rim to read Xuande. H: 3 in. D: 16 1/4 in.



8030: GREEN BEAD NECKLACE WITH TASSEL PENDANT

USD 250 - 350

With a wooden box. L: 20 1/2 in.



8031: A GLAZED DEEP CONICAL JUNYAO STONEWARE BOWL

USD 250 - 350

With splashes of graduated colors on its largely brown body, interior has mottled black splash resembling a mollusk shell pattern. With a wooden box. H: 2 1/2 in. D: 4 3/4 in.



8032: CHINESE PORCELAIN BOTTLE VASE, WITH STORAGE BOX

USD 350 - 450

The bulbous body features vigorous branches filled with large blooms, the back has inscriptions in black, on a milky white ground, and rising from it is an orange-colored neck. Mark on the base to read Qianlong. With a wooden box. H: 7 1/4 in.



8033: A CHINESE ROUND TUREEN AND COVER

USD 250 - 350

In bulbous form, and depicting peaches hanging from branches. Six character in double ring mark on base to read Yongzheng. With a wooden box. H: 6 in. D: 10 in.

SINGLE OWNER'S COLLECTION, NO RESERVE SALE



8034: CHINESE ROUND TUREEN AND COVER

USD 250 - 350

In bulbous form and with depicting peaches in branches. Six-character mark on the base to read Yongzheng. With a wooden box. H: 6 in. D: 10 1/4 in.



8035: TIBETAN BUDDHISM CABINET PLATE, OF THE GREEN TARA

USD 800 - 1,000

With a green and gold mandorla, the Green Tara seats in meditating pose on a lotus throne. The Green Tara represents maternal compassion, and protector from harm toward enlightenment. A large dragon mark on the base. D: 8 3/4 in.



8036: CHINESE PORCELAIN BRUSH POT, OF PEACHES

USD 250 - 350

Depicting peaches and leaves hanging from the branches. Six-character mark on the base to read Yongzheng. With a wooden box. H: 7 1/8 in. D: 7 3/8 in.



8037: CHINESE IMPERIAL YELLOW SEAL STAMP

USD 250 - 350

Stamp handle depicts of a beast in recumbent position atop a base carved with phoenix and tendrils that fits the seal. With a wooden box. H: 4 3/4 in.



8038: A CHINESE PORCELAIN BRUSH POT

USD 250 - 350

Painted with lush and large chrysanthemum blooms on branches, and inscription on the back. Six-character mark on the base to read Yongzheng. With a wooden box. H: 7 in. D: 7 1/4 in.



8039: A CHINESE TUREEN AND COVER, WITH WOODEN BOX

USD 350 - 450

Depicting of peaches and bats. Six-character mark on base to read Yongzheng. With a wooden box. H: 6 in. D: 10 1/4 in.



8040: CHINESE YELLOW BOWL, WITH BOX

USD 250 - 350

Of peaches on the interior and raised lotus petals around the bowl. Mark on the base to read Qianlong. With a wooden box. H: 3 1/2 in. D: 7 1/2 in.



8041: CHINESE SONG DYNASTY JUNYAO-STYLE WINE VESSEL

USD 250 - 350

With a purple splash on its mottled blue-green body, having two handles and an elaborate foliate rim. H: 10 1/4 in.

SINGLE OWNER'S COLLECTION, NO RESERVE SALE



8042: A CHINESE IMPERIAL YELLOW SEAL STAMP

USD 250 - 350

An imposing beast seats atop a carved base that fits the seal. With a wooden box. H: 5 in.



8043: CHINESE PORCELAIN PLATE, NINE PEACHES & THREE BATS

USD 350 - 550

Depicts of bats and five peaches on the interior, and four peaches on the exterior. Six-character in double ring mark on the base to read Yongzheng. With wooden box. D: 8 3/4 in.



8044: TIBETAN BUDDHISM CABINET PLATE, OF THE WHITE TARA

USD 800 - 1,000

Centrally depicting the White Tara in meditation posture on a lotus pod, and surrounded by a border of similar images around the plate. The foliate rim decorated with enameled scribbles. An imposing dragon and script in red on the base of the plate. D: 8 3/4 in.



8045: A CHINESE IMPERIAL YELLOW CENSER

USD 300 - 400

The bulbous body heavily carved, and has a beast handle on each side. The openwork top has a matching beast handle. H: 5 in.



8046: A CHINESE BLUE AND WHITE BRUSH POT

USD 300 - 500

Depicting two dragons amidst fire and clouds facing each other with a scroll bearing inscription in between, all under borders of scrolls and scrolling waves. Four-character mark on the base to read Qianlong. With a wooden box. H: 5 1/8 in. D: 6 in.



8047: A CHINESE AMBER-COLORED STAMP SEAL, FOO DOG HANDLE

USD 250 - 350

A playful foo dog chases its ball on its back, as it seats atop a boulder, which fits the oval stamp. With a wooden box. H: 4 3/4 in. L: 5 in.



8048: CHINESE CELADON POT, WITH WOODEN BOX

USD 200 - 300

With a beautiful waisted neck and bulbous body form, its neck moulded with two fine rings around, and each side has a handle of a slender beast. With a wooden box. H: 3 1/2 in.



8049: CHINESE CELADON SQUARE FORM GU VASE

USD 200 - 300

The wide square mouth tapers down to a knop midsection and continues to form a slightly waisted and flared base. With a wooden box. H: 8 1/4 in.

SINGLE OWNER'S COLLECTION, NO RESERVE SALE



8050: CHINESE LIUYEPING VASE

USD 200 - 300

In willow form, depicting a lush garden, and inscriptions on the back. Mark on the base to read Qianlong. With wooden storage box. H: 7 3/4 in.



8051: CHINESE AMBER-COLORED STAMP AND INKWELL

USD 250 - 350

Stamp handle has a beast handle, and inkwell has a chiling carved on the fitted stamp mouth, and beside it a matching moulded foo lion stand atop the square well, carved with phoenix on four sides. H: 5 in.



8052: CHINESE CINNABAR-COLORED CENSER

USD 300 - 400

The bulbous body deeply carved with mythical creature between borders of lotus petals and ruyi heads, Bearing two ram-head with chiling body handles on the shoulder. Openwork cover with foo dog finial in the same color. Mark on the base. With a wooden box. H: 5 in.



8053: CHINESE AMBER-COLORED SEAL AND INKWELL

USD 300 - 400

Stamp handle has a beast handle, and inkwell has a bat carved on the fitted stamp mouth, and beside it a matching moulded foo lion stand atop the square well, carved with dragons on four sides. With a wooden box. H: 4 1/2 in.



8054: CHINESE CELADON CRACKLEWARE POT

USD 300 - 400

With waisted neck to continue to form a bulbous body, simple beast handle on each side. With a wooden storage box. H: 3 1/2 in.



8055: CHINESE CELADON TRUMPET VASE

USD 200 - 300

With a wide mouth and long subtly flared body with a raised band in the middle. With a wooden box. H: 7 3/4 in.



8056: CHINESE BEIGE CRACKLEWARE VASE, WITH STORAGE BOX

USD 200 - 300

Fine black lines all over its bulbous body with chiling handles, raised by a circular foot. With a wooden box. H: 3 3/4 in.



8057: PAIR OF CHINESE IMPERIAL YELLOW SEAL MARKS

USD 300 - 400

Handles moulded with a figural beast, and sides are heavily carved with symbols. Qianlong seal. With wooden boxes. H: 4 1/2 in.

SINGLE OWNER'S COLLECTION, NO RESERVE SALE



8058: PAIR OF CHINESE CELADON BOWLS, WITH STORAGE BOX

USD 350 - 550

Each with lobed body and interior moulded with a pair of fish. Each comes with a wooden box. H: 2 in. D: 5 1/2 in.



8059: CHINESE CELADON YAOLINGZUN VASE

USD 200 - 300

In mallet form, with two chilong handles. With wooden storage box. H: 7 1/2 in.



8060: CHINESE YELLOW AND BLUE BOWL

USD 200 - 300

Featuring blue dragons on the interior and exterior against a yellow ground. Six-character mark on the base to read Chenghua. With a wooden box. H: 3 in. D: 7 1/4 in.



8061: CHINESE CELADON TRIPOD CENSER

USD 250 - 350

Raised on three leg, with a storage box. H: 4 1/2 in. D: 4 1/2 in.



8062: PAIR OF CONICAL GLAZED STONEWARE BOWLS

USD 300 - 400

In mottled black and beige color. With wooden boxes. H: 1 7/8 in. D: 4 3/4 in.



8063: PAIR OF BEAUTIFUL VASES OF DRAGONS CHASING PEARLS

USD 2,000 - 3,000

Hand-carved vases with dragons. H: 24 3/4 in.



8064: CHINESE BROWN CRACKLEWARE VASE

USD 250 - 350

With fine lines all over the body. A handle on each side. With a wooden box. H: 4 in.



8065: PAIR OF IRON RED BOWLS, WITH BOX

USD 350 - 550

Each bowl is raised on a short foot; beautifully decorated in the interior of floral motif. With a wooden box. H: 2 1/4 in. D: 8 in.

SINGLE OWNER'S COLLECTION, NO RESERVE SALE



8066: CHINESE SONG-STYLE PORCELAIN VASE

USD 200 - 300

Etched and carved with floral blooms, with black glaze. With a wooden box. H: 10 7/8 in,



8067: CHINESE JUNYAO-STYLE WINE VESSEL

USD 250 - 350

With ovoid body in dark brown-black, and maroon splash on its body. Two handles on the sides and an elaborate foliate rim. H: 11 in.



8068: CHINESE PORCELAIN PLATE, OF NINE PEACHES

USD 350 - 550

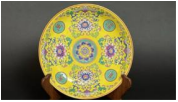
Depicts of bats and five peaches and blooms on the interior, and four peaches on the exterior. Six-character in double ring mark on the base to read Yongzheng. With wooden box. D: 8 3/4 in.



8069: A CHINESE BUDDHIST IRON FIGURE OF AMITABHA

USD 500 - 700

He seats in a meditating pose, hands together with only the fingers touching palms up, on a lotus throne, wearing his head and ear piece. He is said to be the Buddha of Eternal Life, and one of the five cosmic Buddhas of Esoteric Buddhism. With a wooden box. H: 11 1/2 in.



8070: CHINESE IMPERIAL YELLOW DISH

USD 550 - 750

Beautifully painted with blossoming chrysanthemums in the interior against a imperial yellow background; alongside with four characters meaning longevity. A six-character mark to read Yongzheng on the base. D: 8 1/2 in.



8071: CHINESE JUNYAO VASE

USD 200 - 300

With an ovoid form body and waisted neck and slightly flared rim, its dark blue body features a maroon splash, H: 10 1/2 in.



8072: A CHINESE FIGURE OF A BUDDHA

USD 300 - 500

His hair on a bun and layered robe, he seats with his hands together, and in a meditating pose on a weaved floor pad. H: 9 3/4 in.



8073: CHINESE CONICAL STONWARE TEA BOWL

USD 150 - 250

resembles a tortoiseshell, with random beige drips all over the brown-ground body. H: 2 1/2 in. D: 6 1/2 in.

SINGLE OWNER'S COLLECTION, NO RESERVE SALE



8074: CHINESE IRON FIGURE OF AVALOKITESHVARA

USD 300 - 500

Seated on a food dog with an elaborate robe and headpiece, this Bodhisattva is known for his infinite compassion. H: 9 1/2 in.



8075: CHINESE CARVED BAMBOO FIGURE OF MONEY GOD

USD 250 - 350

A standing figure of an amused and long-bearded Chinese money god wearing a lotus crown and belted robe with the symbol of prosperity, left hand holding an ingot. H: 24 3/4 in.



8076: A BRONZE FIGURE OF A PENSIVE BUDDHA

USD 300 - 500

His right hand touches its cheek in a pondering mode - originated from the figure of Prince Siddharta as he thought of the four phases of life - birth, old age, sickness, and death. H: 12 14 in.



8077: CHINESE EARTHENWARE TEAPOT

USD 200 - 300

With a lobed bulbous body, and matching cover and finial. Mark on the base. Comes with a wooden storage box. H: 4 in.



8078: BEAUTIFUL CHINESE FAMILLE ROSE BOTTLE VASE

USD 500 - 800

Raised on a short leg, beautifully painted with "shou" symbols and flying bats all around the globular body, as well as on the neck.



8079: TIBETAN BRONZE FIGURE OF A BUDDHA

USD 350 - 550

Seated on the back of a foo dog, set on a base. H: 9 1/4 in.



8080: KOREAN SONG-STYLE MEIPING VASE

USD 200 - 300

Purple splash on a blue mottled ground body. H: 10 1/8 in.



8081: CHINESE BRONZE PAGODA INCENSE BURNER

USD 500 - 700

Standing on four legs that support the pagoda with fine details of chimes and sloped roof with overhangs, H: 12 in.

SINGLE OWNER'S COLLECTION, NO RESERVE SALE



8082: LOVELY CHINESE WU CAI PORCELAIN STEM CUP

USD 500 - 700

Raised on a tall, sprayed foot; beautifully decorated with floral motif all around.



8083: CHINESE FAMILLE ROSE GREEN GROUND VASE

USD 800 - 1,200

Beautifully decorated with blossoming flowers all around the globular body, and flanked by a long, narrow neck.



8084: CHINESE FAMILLE ROSE LOBED VASE

USD 800 - 1,000

Of an unusual design, beautifully painted with of panels of a mother and a child on the body, against a maroon red background. Magnificently decorated with blossoming lilies on the neck; flanked by gilded handles on two sides.



8085: CHINESE STONEWARE TEABOWL

USD 150 - 250

Resembling a tortoiseshell; dark brown body features light beige drips and splashes. With a wooden box. H: 2 1/2 in. D: 6 1/2 in.



8086: A CHINESE FIGURE OF A SEATED BUDDHA

USD 350 - 550

His legs crossing and hands together. Comes in a wooden storage box. H: 10 in.



8087: AN ARCHAIC BRONZE FOOD VESSEL

USD 300 - 500

Its bulbous body carved, bears two D handles on the rim, and stands on three pointed legs. H: 9 in.



8088: CHINESE TIBETAN BEJEWELED URN

USD 250 - 350

With filigree design and adorned with accessory stones of varying sizes. The cover has a matching design and bears an openwork crown finial. With a wooden box. H: 4 3/4 in.



8089: A CHINESE EARTHENWARE TEAPOT

USD 150 - 250

With a c-handle on one side, and a short spout on another. the bulbous body etched with inscription. Cover has a round finial. Mark on the base. H: 3 1/2 in.

SINGLE OWNER'S COLLECTION, NO RESERVE SALE



8090: ASIAN BLACK GLAZED SQUARE TEAPOT

USD 200 - 300

With a D handle on the side, a short spout, and mark on the base. H: 3 in.



8091: AN ARCHAIC BRONZE TRIPOD VESSEL AND COVER

USD 300 - 500

The vessel of globular form, supported by three legs, the shoulder with two upright square loop handles, the exterior decorated with friezes of interlocking zoomorphic geometric spirals, the domed cover surmounted by mythical beasts, the bronze with a green patina. H: 8 1/4 in.



8092: ASIAN EARTHENWARE TEAPOT

USD 200 - 300

The body with texture of vertical lines around, one side with a c-loop handle, and a spout on the other side. The cover with matching texture and a knob button. A stamped mark on the bottom. H: 3 in.



8093: CHINESE CONICAL STONWARE TEA BOWL

USD 150 - 250

Resembles a tortoiseshell. H: 2 1/2 in. D: 6 1/2 in.



8094: CHINESE CONG VASE

USD 250 - 350

With notched details at the corners, and short neck. H: 11 1/2 in.



8095: CHINESE DAGGER HANDLE, OF A BEAST MASK

USD 300 - 400

Archaic style beast mask cover for a dagger or letter opener handle. H: 7 in.



8096: CHINESE STONE SEAL, OF DRAGON WITH PEARL

USD 200 - 300

Depicting a dragon intensely guarding a pearl atop a handle carved with a dragon and other various inscriptions and symbols. H: 8 3/4 in.



8097: CHINESE ARCHAIC STYLE MIRROR

USD 150 - 250

Depicting of stylized scrolls and beasts within a border of scrolls. D: 8 1/2 in.

SINGLE OWNER'S COLLECTION, NO RESERVE SALE



8098: CHINESE CARVED CONG VASE, OF TAOTIE AND PHOENIX

USD 300 - 400

In cong form, the tall square vase divided into three heavily moulded panels, of phoenix between taotie masks. Size: H: 8 1/2 in.



8099: A CHINESE FIGURAL BUDDHA

USD 250 - 350

hands clasped together, and seated in meditation pose on a lotus throne. H: 7 3/4 in.



8100: AN ASIAN EARTHENWARE TEAPOT

USD 150 - 250

With a smooth bulbous body and cover with acorn finial. Mark on the base. With wooden storage box. H: 3 3/4 in.



8101: CHINESE CLOISONNE MIRROR

USD 200 - 300

Beautifully decorated with blossoming flowers against a turquoise background. D: 9 1/2 in.



8102: TIBETAN WALL PLAQUE, OF BODHISATTVA YAMANTAKA

USD 300 - 500

Depicting Yamantaka, the destroyer of death deity, framed within a border of ruyi heads. H: 10 1/8 in. L: 10 1/8 in.



8103: CHINESE GREEN PORCELAIN BRUSH POT, WITH BOX

USD 250 - 350

On mint green ground, it depicts of a large dragon slightly submerged in the clashing waves, and amidst a background of blooms and tendrils all over. A six-character mark on base to read Qianlong. With a wooden box. H: 8 in. D: 8 1/4 in.



8104: ASIAN BLACK TEAPOT, WITH MARK ON THE BASE

USD 200 - 300

Body with inscription, and inscription repeating on the domed cover with a flat surface knob finial. Carved mark on the base. H: 3 1/2 in.



8105: YELLOW CHINESE INCENSE BURNER

USD 250 - 350

Of bulbous body with both handles of mythical creatures. Cover has finial with matching creature. Carved mark on the base. Comes with a wooden box. H: 5 in.

SINGLE OWNER'S COLLECTION, NO RESERVE SALE



8106: A CHINESE GU VASE, WITH WOODEN STORAGE BOX

USD 250 - 350

Depicting of large blooms and overlapping banana leaves, the elongated vessel proceeds upwards and bears a wide green trumpet mouth. Mark on the base on a matching green ground. A gu was used as a wine beaker or carafe. A six-character mark to read Qianlong on the base. With a wooden box. H: 8 3/4 in.



8107: A CHINESE BEIGE GLAZED JAR, WITH WOODEN STORAGE BO

USD 200 - 300

With very fine black etches on the body, and two chilong handles. With a wooden box. H: 3 3/4 in.



8108: A CHINESE PORCELAIN VASE, WITH STORAGE BOX

USD 200 - 300

Of peaches in a branch. A six-character mark to read Qianlong on the base. With a wooden box. H: 10 in.



8109: CHINESE PORCELAIN VASE, WITH FLORAL DESIGN

USD 250 - 350

Having a rectangular and pear-shaped form on an octagonal base, it depicts a floral motif and bears an inscription in black ink at the back. Two figural handles in red orange on its body. A six-character mark on the base to read Qianlong. With a wooden box. H: 9 1/2 in.



8110: A CHINESE ORANGE AND GOLD JAR AND COVER

USD 300 - 500

Orange-ground body depicts of a gilded dragon under a border of ruyi heads and amidst blooms and tendrils. Cover has matching motif, and with an acorn finial. A six-character mark to read Qianlong in blue ink on the base. With a wooden box. H: 9 3/4 in.



8111: A CHINESE LOBED PORCELAIN BOWL, OF PEACHES & BATS

USD 150 - 250

Featuring nine peaches and five bats, this bowl depicts of longevity and good fortune. Mark in double square on the base to read Qianlong. With a wooden box. H: 2 3/8 in. D: 5 3/8 in.



8112: CHINESE CELADON BOTTLE VASE

USD 200 - 300

With long neck, and two loop handles on it bulbous body. Comes with wooden storage box. H: 11 in.

SINGLE OWNER'S COLLECTION, NO RESERVE SALE



8113: SMALL CHINESE BRUSH POT, OF NINE PEACHES AND A BAT

USD 300 - 500

Depicting auspicious symbols of the nine peaches and a bat for longevity, timelessness, and good fortune. Six-character within double ring mark on the base to read Yongzheng. With a wooden box. H: 7 in. D: 7 1/2 in.



8114: A HAND-PAINTED RELIGIOUS DISPLAY PLATE

USD 500 - 700

Centrally painted of a seated Buddha, with a foliated rim. Beautifully painted of a red, majestic dragon on the base, encircled by a band of inscription. D: 8 3/4 in.



8115: A FINE CHINESE LOTUS BOWL

USD 200 - 300

Of concave form, raised on a short leg. H: 2 3/4 in. D: 6 3/4 in.



8116: A HAND-PAINTED RELIGIOUS DISPLAY PLATE

USD 500 - 700

Centrally painted of a seated Buddha, with a foliated rim. Beautifully painted of a red, majestic dragon on the base, encircled by a band of inscription. D: 8 3/4 in.



8117: A CHINESE CRAVED STONE BRUSH POT

USD 300 - 400

Beautifully carved with a dragon chasing a pearl, and etched with an inscription. A four-character stamped mark on the base to read Qianlong. H: 5 1/2 in.



8118: CHINESE TRIPOD CELADON DISH

USD 300 - 400

Raised on three short cabriole legs. H: 1 1/2 in. D: 5 7/8 in.



8119: CHINESE PLATE, WITH MOTIF OF BLOOMS AND BATS

USD 300 - 400

Bats around the sides, and six-character squared blue mark on the base to read Yongzheng. With a wooden box. D: 8 in.



8120: A BEAUTIFUL CELADON LOTUS LEAF BOWL

USD 200 - 300

Raised on a short foot. H: 2 7/8 in. D: 7 in.

SINGLE OWNER'S COLLECTION, NO RESERVE SALE



8121: CHINESE GREEN DEEP BOWL

USD 300 - 400

Beautifully decorated on the exterior of floral motif. Inscription on the base to read Qianlong period. H: 2 1/2 in. D: 5 7/8 in.



8122: CHINESE MINT GREEN BOWL

USD 300 - 400

Beautifully decorated on the exterior of floral motif. Inscription on the base to read Qianlong period. H: 2 1/2 in. D: 5 7/8 in.



8123: CHINESE IMPERIAL YELLOW PLATE

USD 500 - 600

Depicting four roundels on a floral motif and surrounding a mandala at the center of the interior. Five bats surround the side, and a six-character squared mark on the base to read Yongzheng. D: 8 1/4 in.



8124: CHINESE TRIPOD CELADON BOWL

USD 200 - 300

Raised on three short cabriole legs, flanked by a drum-shaped body. H: 1 7/8 in. D: 3 3/4 in.



8125: CHINESE BLUE PORCELAIN PLATE

USD 300 - 500

Centrally painted with a red dragon chasing a pearl amidst clouds, and surrounded equidistantly by large chrysanthemum blooms. Mark on the base to read Kangxi. D: 8 1/2 in.



8126: CHINESE IMPERIAL YELLOW BOWL

USD 300 - 400

Beautifully decorated on the exterior of blossoming floral motif against an imperial yellow background. Inscription on the base to read Qianlong period. H: 2 1/2 in. D: 5 7/8 in.



8127: CHINESE CELADON FIGURAL BOAT

USD 200 - 300

Size: H: 3 in. L: 5 in. W: 1 3/4 in.



8128: CHINESE BLUE DISPLAY PLATE, OF FLORAL MOTIF

USD 300 - 400

Interior with large blooms on blue ground, and a four-character mark in double square on the base to read Yongzheng. With wooden box. D: 8 1/4 in.

SINGLE OWNER'S COLLECTION, NO RESERVE SALE



8129: GREEN-GLAZED CHINESE TRUMPET VASE

USD 200 - 300

With a bulbous central, and mottled brown specks all over. With a wooden box. H: 7 14 in.



8130: CHINESE IMPERIAL YELLOW BOWL

USD 300 - 400

With green glaze interior, and etched floral design and auspicious symbols on yellow exterior. Inscription on the base to read Qianlong period. With a wooden box. H: 2 1/2 in. D: 5 7/8 in.



8131: A CHINESE PAINTED PLATE, OF A PHOENIX CENTRALLY

USD 300 - 500

Beautifully painted in the center of a phoenix perching on a garden rock. A four-character squared mark to read Yongzheng on the base. With a wooden box. D: 8 3/8 in.



8132: A BLANC DE CHINE GUANYIN, IN LALITASANA POSE

USD 500 - 700

Wearing a flowy robe, and hooded as well over her head, and has a lotus pendant. Her robe hides her hand, though exposes slightly her right foot. Two stamped marks on the lower back, with a wooden box. H: 14 in.



8133: CHINESE GREEN BOWL, WITH INSCRIPTION ON THE BASE

USD 300 - 500

Raised on a short leg, of concave form. Beautifully decorated with floral motif around the exterior. Inscription on the base to read Qianlong period. With a wooden box. H: 2 1/2 in. D: 5 7/8 in.



8134: CHINESE PORCELAIN DISPLAY PLATE

USD 300 - 500

Centrally depicting potted plants against a white ground, and within a black border of large blooms and tendrils. Five bats on the interior. A six-character mark to read Yongzheng on the base. With a wooden box. D: 8 1/4 in.



8135: PAIR OF TWO IRON RED-COLORED BOWLS

USD 200 - 300

With etchings of meandering tendrils. With a wooden box. H: 2 1/2 in. D: 8 in.



8136: CHINESE IMPERIAL YELLOW CABINET PLATE, WITH BOX

USD 300 - 500

Interior has four large blooms and a medallion in the middle, and within a border of multicolored scrolls around the plate. Five bats on the exterior. A six-character mark on the base to read Yongzheng. D: 8 1/4 in.

SINGLE OWNER'S COLLECTION, NO RESERVE SALE



8137: PAIR OF CONICAL CELADON BOWLS, WITH BOX

USD 200 - 300

Each bowl is raised on a short foot, and beautifully decorated with blossoming floral motif in low relief in the interior. With a wooden box. H: 2 3/8 in. D: 8 in.



8138: CHINESE PAINTED PLATE, OF PHOENIX AND BLOOMS

USD 500 - 700

Depicting a phoenix perched on a branch of a tree with plenty of blooms, on blue ground, and iron red scrolling border. Five bats around the sides, and a six-character squared seal mark on green ground on the base to read Qianlong. H: 8 1/4 in.



8139: A BLANC DE CHINE FIGURE, OF A SEATED GODDESS

USD 500 - 700

Her hair in a bun, and wears a one-sleeved garment. She seats in lotus pose, with right hand resting on her leg, and left hand upward open on her right foot. Two stamped marks on the lower back. H: 11 1/2 in.



8140: CHINESE PORCELAIN DISPLAY PLATE

USD 500 - 700

Centrally featuring several potted flowers and plants on white ground, within a border of tendrils and large blooms on black ground. Five bats around the exterior, and a six-character mark on the base to read Yongzheng. D: 8 1/4 in.



8141: CHINESE MOTTLED AND GLAZED DARK GREEN VASE

USD 200 - 300

Slightly in meiping form; with high shoulders and tapering body. With a wooden box. H: 6 1/4 in.



8142: A CHINESE FAMILLE ROSE VASE, OF FLORAL MOTIF

USD 200 - 300

Painted with lush large blooms and branches, and an inscription at the back. A six-character mark in read to read Qianlong on the base. H: 9 7/8 in.



8143: CHINESE PORCELAIN PLATE, OF PEACHES AND BATS

USD 500 - 700

Featuring peaches on the interior and exterior, and with a double-ring six-character mark on the base to read Yongzheng. D: 8 3/4 in.



8144: CHINESE MINIATURE CRACKLEWARE HU-FORM VASE

USD 200 - 300

In octagonal shape, and with tubular handles. With a wooden box. H: 6 in.

SINGLE OWNER'S COLLECTION, NO RESERVE SALE



8145: CHINESE IRON RED PLANTER, OF DRAGONS

USD 500 - 700

Depicting of two dragons face each other with a scroll between them, and a pearl between their tails, below a border of scrolls around the rim, and above waves and mountains. A four-character mark in red on the base to read Qianlong.. H: 6 1/8 in. D: 7 3/8 in.



8146: A SEATED BLANC DE CHINE GUANYIN HOLDING A SCROLL

USD 500 - 700

A Chinese porcelain figure of the Goddess of Mercy, wearing a lotus pendant and in her flowy robe, she seats with her right hand resting on her knee and her left hand gently crossing over while cradling a scroll. Two stamped marks on the lower back. With a wooden box. H: 14 in,



8147: SMALL CHINESE RICE BOWL, WITH WOODEN BOX

USD 200 - 300

Bearing an elaborate and slightly raised floral motif on the exterior. A double-ring six-character mark to read Yongzheng on the base. H: 1 1/2 in. D: 3 1/2 in.



8148: CHINESE CELADON PORCELAIN TRUMPET VASE

USD 200 - 300

With two rings around the body, and extremely flared mouth. With a wooden box. H: 8 in.



8149: CHINESE MAROON RED SHALLOW DISH

USD 500 - 700

Centrally painted with a flying dragon and a majestic phoenix chasing a flaming pearl, against a maroon red background. A six-character mark on the outer rim to read Xuande. H: 3 in. D: 16 1/8 in.



8150: CHINESE CELADON LOTUS BOWL, WITH WOODEN BOX

USD 200 - 300

Of concave form, raised on a short; with a lobed exterior. With a wooden box. H: 2 1/2 in. D: 6 in.



8151: CHINESE IMPERIAL YELLOW BOWL

USD 500 - 700

Centrally depicting a dragon in the interior, and painted on the exterior with four round cartouches bearing a red dragon in each, all over a diaper of red keyfret on yellow ground, and between a border of scrolls on the rim and foot. Six-character mark to read Guangxu on the base. H: 2 3/4 in. D: 6 1/4 in.

SINGLE OWNER'S COLLECTION, NO RESERVE SALE



8152: CHINESE PORCELAIN VASE, OF PEACHES ON BRANCH

USD 300 - 500

In burnt orange on white ground, and gilded rim. A six-character mark to read Qianlong on the base. With a wooden storage box. H: 10 1/4 in.



8153: CHINESE BLUE AND IRON RED PLATE

USD 500 - 700

Bearing three gold fish centrally, and bats around the side, among tendrils and blooms. H: 2 1/2 in. D: 17 7/8 in.



8154: CHINESE IRON RED AND BLUE & WHITE GLOBULAR VASE

USD 700 - 1,000

Magnificently painted with a majestic dragon over a roaring ocean with scrolling waves of a iron red background. Six-character mark near the rim to read Xuande. H: 16 3/4 in.



8155: CHINESE IMPERIAL YELLOW GLOBULAR VASE

USD 500 - 800

Finely painted with a flying dragon chasing a flaming pearl around the globular body against the imperial yellow background. Flanked by a long, narrow neck with a flaring mouth. Six-character mark to read Qianlong. H: 15 in.



8156: FINE CHINESE MULTICOLOR POTTERY VASE

USD 500 - 700

Finely painted with multicolor all over the vase, decorated with foo lions in low relief around the bulbous body. Flanked by two creature head on the swelling shoulder. H: 14 1/2 in.



8157: CHINESE PORCELAIN BOWL

USD 300 - 500

Deep bowl in orange and with a lush garden motif. A four-character mark to read Qianlong on the base. With a wooden box. H: 2 3/4 in. D: 6 in.



8158: CHINESE PORCELAIN PLATE, OF PEACHES IN A BRANCH

USD 500 - 800

Interior and exterior painted with peaches. A six-character in double ring mark on the base to read Yongzheng. With wooden storage box. D: 8 3/4 in.



8159: CHINESE PEAR-SHAPED VASE, WITH BOX

USD 200 - 300

Raised on an orange sprayed foot. Of floral motif on orange foot, inscription on the back, and a six-character mark on the base to read Qianlong. With a wooden box. H: 11 1/2 in.

SINGLE OWNER'S COLLECTION, NO RESERVE SALE



8160: CHINESE PORCELAIN VASE, FLORAL AND BOW MOTIF

USD 500 - 700

Blue-ground body is covered with flowers and tendrils, and further moulded with a wrapped of a pink ribbon. A four-character mark on the green base to read Yongzheng. Wooden box included. H: 11 1/2 in.



8161: CHINESE FAMILLE ROSE VASE, WITH BOX

USD 200 - 300

With floral motif and inscription on the back. Six-character mark to read Qianlong on the base. H: 10 1/4 in.



8162: CHINESE FAMILLE ROSE BOTTLE VASE, WITH WOODEN BOX

USD 300 - 500

With large floral motif, and inscription on the back. A double-rim, six-character mark on the base to read Yongzheng. With a wooden box. H: 9 in.



8163: BEAUTIFUL GLAZED CHINESE CELADON CONG VASE

USD 300 - 500

In square form, and ribbed design. With a wooden box. H: 10 1/8 in.



8164: CHINESE IMPERIAL YELLOW GLOBULAR VASE

USD 700 - 800

Finely painted with a dragon chasing a flaming pearl around the bulbous body. Flanked by a long, narrow neck. Six-character to read Qianlong on the bottom. H: 14 3/4 in.



8165: FINE CHINESE BLUE AND WHITE VASE

USD 500 - 700

Beautifully painted blossoming flowers with scrolling vines around the body and on the shoulder. Six-character to read Qianlong. H: 13 3/4 in.



8166: CHINESE BLUE AND WHITE SHALLOW DISH

USD 300 - 500

With foliate rim, and depicting a floral motif. H: 2 1/2 in. D: 18 1/4 in.



8167: TEAL CHINESE BI, ON METAL STAND

USD 200 - 300

Of beautiful mottled turquoise color, with a metal stand. D: 12 in.

SINGLE OWNER'S COLLECTION, NO RESERVE SALE



8168: CHINESE BLUE AND WHITE BOWL

USD 300 - 500

Of concave form, raised on a short leg. Depicting of meandering blooms and tendrils. H: 5 1/2 in. D: 15 3/4 in.



8169: CHINESE RED AND BLUE SHALLOW BOWL

USD 500 - 700

Centrally depicting an imposing dragon on a maroon red ground, rim with blue and white scroll motif and a six-character mark on the outer rim to read Xuande. H: 2 3/4 in. D: 16 1/4 in.



8170: CHINESE BLUE AND WHITE OVAL PLANTER, PHOENIX

USD 500 - 700

With meandering tendrils on flared rim, over an openwork body. Base depicts of two dancing phoenixes. Six-character mark on the rim to read Xuande. H: 4 in. L: 11 in. W 9 1/2 in.



8171: PAIR OF CHINESE POTTERY JARS

USD 500 - 700

Each is decorated with an ebonized panels in relief on the bulbous body; also flanked by two creature heads on the swelling shoulder. H: 14 in.



8172: PAIR OF CHINESE MULTICOLOR POTTERY JARS

USD 800 - 1,000

Each jar is beautifully decorated with panels of aquatic scenes and phoenix around the bulbous body. Flanked by two creature heads on the swelling shoulder, with a flaring mouth. Four-character mark on the shoulder. H: 14 in.



8173: CHINESE BLUE AND WHITE OVAL PLANTER

USD 500 - 700

Painted with clouds bordering the flared rim above an vertical openwork body. Base depicting of a large dragon within double rings. A six-character mark to read Xuande on the rim. H: 4 in. L: 11 in. W: 9 1/2 in.



8174: UNUSUAL CHINESE BLUE AND WHITE MOONFLASK

USD 800 - 1,000

Raised on a short, sprayed leg. Finely painted with an unusual design with geometric patterns around the body. Flanked by two handles on the shoulder. Six-character mark to read Xuande on the neck. H: 11 1/2 in.



8175: CHINESE BLUE AND WHITE BOWL

USD 300 - 500

Raised on a short leg with a scalloped rim. Beautifully painted with a band of blossoming flowers on the exterior; finely painted with a scene of scholars in the center, encircled by by a band of blossoming peonies. H: 6 in. D: 15 1/2 in.

SINGLE OWNER'S COLLECTION, NO RESERVE SALE



8176: CHINESE BLUE AND WHITE TEAPOT

USD 300 - 500

Beautifully painted phoenixes on the body; flanked by a high handle of bamboo design with a lid. A four-character mark on the shoulder. H: 6 in.



8177: CHINESE BLUE AND WHITE BOWL

USD 300 - 500

Raised on a short leg. Beautifully painted with a band of blossoming peonies on the exterior; finely painted with a scene of a foo lion in the center, encircled by a band of blossoming chrysanthemums H: 6 1/2 in. D: 16 1/2 in.



8178: PAIR OF CHINESE BLUE AND WHITE LIDDED JARS

USD 800 - 1,200

Each jar is decorated with panels in relief of blossoming flowers around the bulbous body. With a domed lid, flanked by a foo dog atop as finial. H: 16 in.



8179: PAIR OF CHINESE BLUE AND WHITE PEAR-SHAPED VASES

USD 800 - 1,000

Each vase is beautifully painted on the exterior of a flying phoenix amongst blossoming peonies with scrolling vines. A Six-character mark to read Xuande on the shoulder of each vase. H: 13 1/4 in.



8180: CHINESE BLUE AND WHITE BOWL

USD 300 - 500

Raised on a short leg. Beautifully painted with a band of blossoming peonies on the exterior; finely painted with a scene of a scholar with his horse in the center, encircled by a band of blossoming chrysanthemums. H: 6 1/2 in. D: 16 1/2 in.



8181: MAGNIFICENT CHINESE BLUE AND WHITE MOONFLASK

USD 500 - 700

Raised on a short leg. Finely painted a dragon and a phoenix on each side of the flattened body. Flanked by two ruyi scepters on the shoulder as handles. Six-character Qianlong on the bottom. H: 14 in.



8182: CHINESE IRON RED AND BLUE & WHITE LIDDED JAR

USD 300 - 500

Finely painting with an aquatic scene around the bulbous body of fishes and water lilies over rolling waves. A six-character mark to read Xuande on the swelling shoulder. H: 16 in.



8183: CHINESE IMPERIAL YELLOW GROUND VASE

USD 500 - 700

Beautifully painted blossoming flowers all around the body against a imperial yellow background. Six-character to read Qianlong on the bottom. H: 16 1/2 in.

SINGLE OWNER'S COLLECTION, NO RESERVE SALE



8184: BEAUTIFUL CHINESE BLUE AND WHITE VASE

USD 700 - 900

Raised on a sprayed leg. Beautifully painted with blossoming peonies and scrolling vines around the body as well as on the shoulder. Flanked by two handles on the neck. Six-character mark to read Qianlong on the bottom. H: 14 in.



8185: BEAUTIFUL CHINESE BLUE & WHITE LIDDED JAR

USD 500 - 700

Beautifully decorated with panels of blossoming flowers in relief around the bulbous body. With a lid with foliated rim. H: 13 in.



8186: FINE CHINESE BLUE AND WHITE GLOBULAR VASE

USD 500 - 700

Raised on a short leg, finely painted of blossoming peonies and scrolling vines around the bulbous body. Flanked by a long, narrow neck with a slightly flaring mouth. Six-character mark to read Qianlong on the bottom. H: 15 1/4 in.



8188: MAGNIFICENT CHINESE LIME GREEN GROUND VASE

USD 800 - 1,200

Magnificently painted of a dragon and a phoenix around the body against a lime green background, with blossoming flowers and scrolling vines. Six-character mark to read Qianlong on the bottom. H: 17 1/4 in.



8189: TIBETAN ORNAMENTAL BLADE

USD 300 - 500

With stylised inscriptions and etchings all over the blade.



8190: A TIBETAN ORNAMENTAL SWORD

USD 300 - 500

Finely carved with different hieroglyphic patterns on both sides.



8191: BEAUTIFUL JADE LIKE STONE BRACELET

USD 150 - 250

Strung, and with formed hook and rectangular slot to clasp.



8192: SINGLE STAND BEAD NECKLACE

USD 100 - 200

Comprising of many small beads.

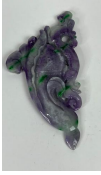
SINGLE OWNER'S COLLECTION, NO RESERVE SALE



8193: FLAT STONE BRACELET

USD 150 - 250

With formed hook and rectangular slot to clasp. Finely carved with patterns.



8194: CHINESE PURPLE PENDANT

USD 150 - 250

Of beautiful purple and green colors, finely carved.



8195: CHINESE SINGLE STRAND RED BEAD NECKLACE

USD 150 - 250

Comprising of small dark red and red beads.



8196: A WOODEN POINTING STAFF

USD 200 - 300

Top part has a totem design of three stacked masks, and handle is textured, deeply ribbed, and spiraled



8197: A LONG SINGLE STRAND WOODEN BEAD

USD 200 - 300

Comprising of carved beads, with a tassel on the end.



8198: CHINESE HAND CARVED JADE OPENWORK BI

USD 250 - 350

Magnificently carved with great details; of mottled dark brown color.



8199: A TIBETAN ORNAMENTAL DAGGER

USD 500 - 700

A carved mystic creature head as the hilt; with carving all over the dagger.



8200: A TIBETAN BRONZE SWORD

USD 300 - 500

Carved with stylized etchings from the pommel to the guard, with a plain, clean blade.

SINGLE OWNER'S COLLECTION, NO RESERVE SALE



8201: A CHINESE ORNAMENTAL SWORD

USD 250 - 350

With a ribbed grip, carved vertical guard, and slender triangular blade.



8202: A CHINESE BRACELET

USD 150 - 200

Strung and intricately carved rectangular pieces, and with a round clasp.



8203: A PAIR OF ROUND CHINESE RED STONE BOWLS

USD 200 - 300

With dark red and white color all over the bowl.



8204: A PAIR OF TIBETAN HAND-MADE JEWELLED CUPS

USD 250 - 350

Filigree gilt and band of bejeweled stones.



8205: CHINESE STONE CONG

USD 150 - 250

Body etched with inscriptions on all four square sides



8206: CHINESE CINNABAR-COLORED STONE VESSEL

USD 250 - 350

Flanked by two elephant head handles, while two panels bear a raised mask, standing on an oval plinth.



8207: CHINESE JADE-LIKE CONG

USD 150 - 250

Etched with inscriptions on all four square panels, standing on short round base.



8208: CHINESE JADE-LIKE SHORT CONG

USD 100 - 200

All four panels with various inscriptions, raised on short round base.

SINGLE OWNER'S COLLECTION, NO RESERVE SALE



8209: CHINESE HAND-CARVED WINE VESSEL

USD 500 - 700

In the form of a dragon.



8210: CHINESE STONE DRAGON AND BEAST STAMPS

USD 350 - 550

One rectangular block stamp with a beast handle sits on a fitted square base, with a dragon lurking on the side a step below and on top of a larger rectangular stamp with dragon carving on textured surface.



8211: CHINESE ROUND MONOCHROME BROWN BOWLS

USD 250 - 350

With a beautiful bulbous and evenly caramel colored body.



8212: CHINESE PLATE, WITH FLORAL MOTIF

USD 350 - 550

With several large and small blooms on a shrub against a white ground. Red mark in double square borders on the base



8213: A PAIR OF FINELY CARVED SPEAR TIPS

USD 350 - 550

Finely carved with great details.



8214: A CHINESE CELADON BOWL

USD 200 - 300

Evenly conical shape raised on a smaller round base of the same color.



8215: A FINELY MOULDED ORNAMENTAL SPEAR TIP

USD 350 - 550

With moulded masks on one end.



8216: SET OF TWO CHINESE JADE-LIKE NECKLACES

USD 200 - 300

Each stone in small ring form, strung together.

SINGLE OWNER'S COLLECTION, NO RESERVE SALE



8217: AN UNUSUAL CHINESE CINNABAR-COLORED WINE VESSEL

USD 300 - 400

A mythical beast lurks around the cup and lid to form as its handle, the lid with a border of scrolls, body carved, and standing on three tall and slightly flared spear legs.



8218: A CHINESE LONGQUAN CELADON TWIN FISH BOWL

USD 250 - 350

Exterior is evenly ribbed to resemble lotus petals, while interior is moulded with a twin fish design.



8219: A PAIR OF AMBER-COLORED OF PI XIU & PI YAO

USD 250 - 350

Of dark amber colors, carved with magnificent details.



8220: A PAIR OF YELLOW FIGURAL STONE STAMPS

USD 200 - 300

Of foo dog handles; one looking down, the other with head bent down to play with a ball. Black inscriptions on the body.



8221: A PAIR OF ONYX STONE PYRAMID PAPER WEIGHTS

USD 200 - 300

Of identical pyramid shape.



8222: A PAIR OF YELLOW BRUSH WASHERS

USD 250 - 350

Each one with ruyi heads as handles, and inscriptions in black on the body.



8223: A PAIR OF AMBER COLORED BURSH WASHERS

USD 200 - 300

Each one with a dragon lurking on the body and lid, and further inscriptions on the body. Mark on the base.



8224: A CHINESE CINNABAR RED-COLORED INK BASE

USD 150 - 250

Of red and white color; finely carved with a water lily pond scene around the base.

SINGLE OWNER'S COLLECTION, NO RESERVE SALE



8225: A CHINESE BRUSH WASHER

USD 100 - 200

With a beautiful caramel brown colored and bulbous body.



8226: A SET OF TWO TIBETAN CARVED MASKS

USD 350 - 550

Finely carved with details; one is taller than the other.



8227: A SET OF TWO CARVED BEAD BRACELETS

USD 250 - 350

Each bead is finely carved with details.



8228: SET OF TWO CHINESE SPINACH JADE-LIKE BRACELETS

USD 250 - 350

Of beautiful mottled dark green and green color.



8229: PAIR OF TWO CHINESE CINNABAR-COLORED PENDANTS

USD 200 - 300

Molded with a stretched dragon on top. Stamp on the base.



8230: LONG CHINESE BEADED NECKLACE AND PENDANT

USD 150 - 250

Comprising of different type of stone beads and pendants.



8231: PAIR OF CHINESE YELLOW STONE PENDANTS

USD 200 - 300

Molded stretched out dragon on top, and mark on the base



8232: A COLLECTION OF ETCHED STONES

USD 350 - 550

With fine details of etched and carved details of characters and immortals.

SINGLE OWNER'S COLLECTION, NO RESERVE SALE



8233: A CHINESE RECTANGULAR PLAQUE

USD 350 - 450

In slightly amber color, and textured surface.



8234: CHINESE AMBER-COLORED BRUSH WASHER

USD 250 - 350

With a shallow well, and an auspicious symbol etching on the surface. Mark on the bottom.



8235: A PAIR OF ONYX OBELISK PAPER WEIGHTS

USD 350 - 550

With clean linear and smooth texture.



8236: A BEAUTIFUL CHINESE JADE-LIKE ROUND PENDANT

USD 150 - 250

Of lotus flowers on a cabbage pod



8237: CHINESE AMBER-COLORED FIGURE, OF A PIXIU

USD 250 - 350

Finely carved with great details.



8238: CHINESE CELADON BULL HEAD CUP

USD 350 - 550

An unusual celadon cup with a bull head. With a wooden box.



8239: CHINESE PORCELAIN FUSHOU PATTERN LOTUS RIM PLATE

USD 350 - 450

Four-character mark to read Yongzheng on the bottom. With a wooden box.



8240: SET OF TWO CHINESE CARVED JADE PENDANTS

USD 200 - 300

Of mottled green and brown colors; finely carved with scrolling patterns.

SINGLE OWNER'S COLLECTION, NO RESERVE SALE



8241: CHINESE BOTTLE VASE

USD 250 - 350

The bulbous body is flanked by a long neck with a flaring rim. With a wooden box.



8242: CHINESE AMBER-COLORED LIDDED CENSER

USD 200 - 300

Carved with fine details; flanked by a foo dog atop as a finial. Carved characters on the base.



8243: CHINESE RED STONE INKWELL

USD 100 - 200

With a reclining foo dog at one end of the block, and a shallow well beside it.



8244: A CHINESE CELADON TRIPOD CENSER

USD 150 - 250

Raised on three legs with bulbous body.



8245: TIBETAN BUDDHISM BRONZE CEREMONIAL DAGGER

USD 300 - 500

Handle of a crowned mask with turquoise above a band of oval turquoise, the blade head resembles a bird mask with snake pendants toward the blade tip.



8246: TIBETAN DAGGER WITH MAHAKALA HEAD

USD 250 - 350

Carved with magnificent details



8247: FINE CHINESE VASE IN BROWN MONOCHROME

USD 200 - 300

Following a Grecian-shaped classic vessel, with c-shaped handles on the neck. H: 9 1/4 in.



8248: CHINESE CELADON DOUBLE GOURD VASE

USD 300 - 500

Raised on a short foot and the body is beautifully incised with blossoming peonies all around the body.
