

Artingstall Auctioneers 1874



ANTIQUES AND COLLECTIBLES ESTATE AUCTION

Sunday - November 20, 2022

ANTIQUES AND COLLECTIBLES ESTATE AUCTION



8001: CHINESE HARDWOOD CABINET

USD 500 - 800

Beautifully made. Which opens to six equal open compartments and two drawers - three on each side, plus a pull-out drawer between the first and second shelves. Standing on four legs.



8002: A FINE CHINESE HARDWOOD CABINET

USD 500 - 800

Beautifully made. Which opens to six equal open compartments and two drawers - three on each side, plus a pull-out drawer between the first and second shelves. Standing on four legs.



8003: PAIR OF ANTIQUE CHINESE CARVED AND GILT WOOD PANELS

USD 300 - 500

Lacquered, gilded, and ebonized. Size:



8004: A BEAUTIFUL FOUR-PANEL CARVED WOOD SCREEN

USD 500 - 800

The two middle panels stand taller than the outside panels; all of which have open work designs - with the each of the outside panels having two stacked octagonal designs, creating a visual highlight of the number 8 or infinity. Below the open work are rectangular carved panels of figures and landscapes.



8005: ANTIQUE CHINESE CARVED WOOD STANDING PANEL

USD 500 - 800

Intricate. Openwork. With sturdy legs.



8006: SET OF FOUR HAND-CARVED WOODEN PANELS

USD 500 - 800

Carved and incised with great design and details. Size:



8007: SET OF FOUR FRAMED ARTWORKS

USD 400 - 500

Of landscapes in seasons.



8008: CHINESE WOODEN SIDE TABLE WITH MARBLE TOP

USD 200 - 300

With fitted round marble top, and with open work design bellowing apron, an X wood stretcher keeps the four legs stable.

ANTIQUES AND COLLECTIBLES ESTATE AUCTION



8009: A PAIR OF CHINESE MING STYLE ROUND-BACK CHAIR

USD 750 - 1,500

Having a vertical panel in the middle of the open back rest, with curved crestrail ending with outward hook handles, and bearing solid wood seat. Lacquered.



8012: SOUTHEAST ASIAN HAND-MADE WOODEN MASK WALL DECOR

USD 100 - 200

Likely a traditional wooden mask hand-made in Sri Lanka, to ward off evil spirits and commemorate cultural heritage.



8013: SET OF SILVER-PLATED FLATWARE, SERVICE FOR SIX (6)

USD 200 - 300

Comes with a wooden storage with red velvet lining.



8014: SET OF FOUR TABLE DECORS

USD 200 - 250

Of a framed picture, a plate, a table screen, and a small fan-shaped painted porcelain table decor.



8015: SET OF NINE MINIATURE VASES

USD 150 - 200

of various figural and landscape designs on different vase shapes, all with white ground.



8016: PAIR OF PORCELAIN RECLINING FIGURES

USD 150 - 200

Of a man and a lady, both in period costumes.



8017: SET OF TWO TABLE SCREENS

USD 150 - 200

Larger round plaque depicts of cranes, and the small one has fine carving in the center.



8018: CHINESE CLOISSONNE VASE

USD 250 - 350

One panel depicts of a mountainous landscape, the other of an inscription.

ANTIQUES AND COLLECTIBLES ESTATE AUCTION



8019: A CHARMING ASIAN TEA SET, SET OF FIVE

USD 125 - 200

Composing of a teapot and four (4) tea cups.



8020: CHINESE JADE FIGURAL STATUE, OF STANDING GUANYIN

USD 500 - 800

Wearing a flowy garment, the Guanyin holds a staff and a leashed pixiu. On a fitted wooden stand.



8021: MOULDED CLAY, OF A HUMAN FACE, NIAO-SUNG STYLE

USD 100 - 200

If moulded in period, per Taiwannews.com, "it is believed to have been created between 1,300 and 1,800 years ago and is part of the Niao-Sung Culture, located in today's Xinshi District. The work has clear facial features, with a straight nose and braided hair, providing a clue as to how people looked in those days."



8022: CHINESE LIUYEPING PORCELAIN VASE

USD 125 - 200

Depicting of birds on shrubs. Mark on base.



8023: CHINESE BLUE AND RED DEEP BOWL

USD 200 - 300

Depicting meandering flowers on the interior and exterior, mark on the base.



8024: GILTWOOD FRAMED OIL PAINTING BY M.C. THOMPSON

USD 250 - 450

Giltwood framed. Depicts a small shed next to a coast. Signature to read M.C. Thompson. With Frame: L: 22 3/4 in. H: 18 3/4 in. Without Frame: L: 16 in. H: 12 1/4 in.



8025: FERNELEY RAMUS (1868 - 1937)

USD 200 - 500

Framed. A watercolor painting that depicts a village scene. Signature on bottom right to read F. Ramus, dated 1914. Ferneley Ramus (1868 - 1937) was a prolific painter in both oils and watercolors. H: 9 1/4 in. L: 16 3/4 in.



8026: A PORTRAIT DRAWING OF A LADY

USD 500 - 700

A beautiful drawing that depicts a lady dressing in a dress with a shawl. Not signed. H: 20 in. L: 15 3/4 in.

ANTIQUES AND COLLECTIBLES ESTATE AUCTION



8027: FRAMED OIL ON BOARD PAINTING OF LANDSCAPE

USD 100 - 300

Framed. An oil on board painting that depicts a girl and a few sheep next to a river amongst a fall forest. Signature on bottom right which is illegible. H: 20 in. L: 24 1/8 in.



8028: ROBERT SCOTT TEMPLE, BRITISH (CIRCA 1850 - 1937)

USD 200 - 500

Framed. Titled "Autumn", a beautiful painting that depicts a tranquil fall forest. Robert Scott Temple was a British painter who was born in circa 1850. The record sold price for this artist in auction is USD \$1,694 for "Home", which was sold in 2018. With Frame: L: 25 1/2 in. H: 21 1/2 in. Without Frame (Painting Only): L: 18 1/4 in. H: 14 1/4 in.



8029: OIL PAINTING ON BOARD OF A RIVERBANK BY LABROSSE

USD 150 - 250

Framed. An oil on board painting that depicts a riverbank. Signature to read LABROSSE on bottom right. H: 13 in. L: 16 in.



8030: CHINESE BLUE AND WHITE JARDINIERE

USD 1,000 - 2,000

Painted with trees in the woods beneath a border of hanging garlands. H: 20 7/8 in. D: 20 3/4 in.



8031: JAPANESE BALUSTER LIDDED JAR

USD 100 - 200

Beautifully decorated with interspersed large and small leafy blooms, against a dark blue background. H: 14 1/8 in.



8032: PAIR OF CHINESE CELADON CRACKLEWARE CONG VASES

USD 500 - 800

Of compressed forms. H: 8 1/2 in.



8033: PAIR OF CHINESE PAINTED PORCELAIN FIGURES

USD 50 - 100

H: 14 1/2 in.



8034: JAPANESE CALLIGRAPHY SCROLL

USD 100 - 300

Inscriptions to the left. H: 51 in., L: 12 1/2 in.

ANTIQUES AND COLLECTIBLES ESTATE AUCTION



8035: JACK BEDER, CANADIAN (1910 - 1987)

USD 500 - 1,000

Framed. A watercolor painting that depicts a winter landscape. Signature on bottom right to read J.B. Jack Beder (1910 - 1987), was a well respected Canadian artist. Born in Poland in 1910 and immigrated to Montreal in 1926. He studied at the *École des Beaux-Arts de Montréal* from 1929-1934, during which time he won several awards and prizes for drawing and painting. His style was representational and impressionist and his main influences were Maurice Cullen and, more importantly, James Wilson Morrice, both Canadian painters. He was best known for Montreal street scenes and 1930s Montreal cafes, but also painted landscapes, still-lives, gardens and portraits/figures. He worked in oils, acrylics, gouaches, watercolors, pastels, drawings and prints (serigraphs, linoprints, monotypes and monoprints). He also produced sculpture, mostly non-objective, in wood, limestone, marble, serpentine, plaster and liquitex/ cardboard. The record sold price for this artist in auction is USD \$7,145 for "Tree Image (Sculpture #43)", which was sold in 2017. With Frame: 19 1/2 in. x 17 1/2 in. Without Frame (Painting Only): 10 in. x 8 in.



8036: GILTWOOD FRAMED OIL PAINTING OF A LANDSCAPE

USD 400 - 800

Depicting a rural riverbank.



8037: FRAMED OIL PAINTING OF MOUNTAINS

USD 1,000 - 2,000

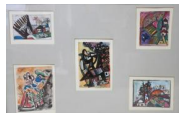
Framed. An oil painting that depicts a winter landscape scene with towering mountains, overlooking a tranquil pond. Signature to the lower right which is illegible. H: 30 in. L: 40 in.



8038: FRAMED WATERCOLOR PAINTING OF A CITY SCAPE.

USD 500 - 800

Framed. A watercolor painting that depicts a cityscape. Signed on the bottom in Hebrew. H: 6 3/4 in. L: 8 1/2 in.



8039: LEO ROTH, ISRAELI (1914 - 2002)

USD 2,000 - 3,000

Leo Roth was an Israeli painter who was born in 1914. Their work was featured in exhibitions at The Petach Tikva Museum of Art and The Jerusalem Artists' House. Leo Roth's work has been offered at auction multiple times. Since 2003 the record price for this artist at auction is USD \$6,900 for "The Shear", sold at Montefiore in 2015. The artist died in 2002.



8040: 19TH CENTURY CHINESE LIDDED FAMILLE ROSE JAR

USD 100 - 200

Finely painted with a figure scene around the body. H: 12 3/4 in.



8041: PAIR OF MONOCHROMATIC VASES ON BURNER STANDS

USD 100 - 300

H: 11 1/8 in.

ANTIQUES AND COLLECTIBLES ESTATE AUCTION



8043: CHINESE BLUE & WHITE AND IRON RED GLOBULAR VASE

USD 150 - 250

Beautifully painted with different sets of pattern all around the body. Flanked by two mystic creature ring handles on the shoulder. H: 15 1/2 in.



8044: CHINESE PORCELAIN VASE OF ROOSTER

USD 300 - 400

Depicting a rooster and a hen courting scene. Inscription on one panel. Mark on the base.



8045: CHINESE SCROLL OF POETRY

USD 300 - 500

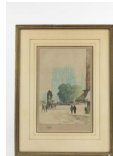
Signature to read Ding Chengming. H: 38 3/4 in. L: 13 in.



8046: ALEXANDER STUART BOYD R.S.W., SCOTTISH (1854-1930)

USD 200 - 400

Framed. A watercolor painting that depicts farmers and merchants in West Kilbride, a village in Scotland. Signature on bottom left to read AS Boyd, West Kilbride, 1918. Alexander Stuart Boyd was a Scottish illustrator, cartoonist and painter, who was best-known for his work with The Graphic and Punch. He also illustrated a variety of books, including many with a Scottish background, and several girls' stories by authors such as May Baldwin and L.T. Meade. H: 7 in. W: 10 1/4 in.



8047: FRAMED PRINT OF A CITY SCENE

USD 300 - 500

Framed. A print that depicts a European city street scene. Signed on bottom right ' Henri Le Riche.' Print Only: L: 9 3/4 in. H: 15 in. With Frame: L: 17 1/4 in. H: 23 in.



8048: FRAMED OIL ON BOARD PAINTING OF CHRIST

USD 3,000 - 5,000

Framed, finely painted in great details, depicts a scene with Christ and the followers. Signature to read J. H. Moley. H: 13 in. L: 10 1/8 in.



8049: MARC CHAGALL, RUSSIAN-FRENCH (1887 - 1985)

USD 500 - 800

Framed. Lithograph, titled "Nocturne a Venice". On paper with an indigo background. Pencil signed on the bottom. Marc Chagall (1887 - 1985) was a Russian-French artist of Belarusian Jewish origin. As an early modernist, he was associated with several major artistic styles and created works in a wide range of artistic formats, including painting, drawings, book illustrations, stained glass, stage sets, ceramics, tapestries and fine art prints. With Frame: H: 26 1/2 in. x W: 23 1/2 in. Without Frame: H: 13 1/2 in. x W: 10 1/2 in.

ANTIQUES AND COLLECTIBLES ESTATE AUCTION



8050: OIL ON CANVAS PAINTING OF A CITY STREET SCENE

USD 200 - 500

Framed. An oil on canvas painting that depicts a city street scene. Unsigned. With Frame: L: 25 1/2 in. H: 22 in. Without Frame: L: 19 1/2 in. H: 15 1/2 in.



8051: WILLIAM THURSTON TOPHAM, CANADIAN (1888 - 1966)

USD 200 - 400

Depicts a group of people taking an art class and drawing. Signature to read "Topham / 67" on the bottom right. William Thurston Topham (1888 - 1966) was a Canadian painter, known for landscape painting, war artist. One of his works, "The Brook in Winter", was sold at Waddington's in 2008. H: 8 in. L: 10 in.



8052: BEAUTIFUL LAMP WITH ART NOUVEAU SHADE

USD 200 - 300

The base in the form of a jug with two large handles. The shade decorated with rectangular tiles of creamy green tones. H: 17 1/2 in.



8053: CHINESE BLUE AND WHITE GU VASE

USD 300 - 500

Finely painted with landscapes and blossoming flowers on the body, as well as on the neck. H: 20 in. (50.8 cm)



8054: A UNIQUE PAINTED AND RAISED DOUBLE GOURD VASE

USD 1,000 - 1,500

Decorated in high relief with dragons chasing pearl. H: 22 1/4 in.



8055: CHINESE SQUARE PORCELAIN VASE MOUNTED AS LAMP

USD 400 - 800

Size:



8056: WILLIAM RAMSEY, BRITISH (EARLY 20TH CENTURY)

USD 800 - 1,000

Framed, a beautiful painting that depicts a farmer near his farm house, with some geese nearby. Signature to read W Ramsey. The record sold price for William Ramsey in auction is USD \$2,499, which was sold at Christie's in 1998. H: 13 1/4 in. L: 19 in.



8057: FRAMED OIL PAINTING, OF A STILL LIFE

USD 500 - 800

Dimensions. H: 10 in. L: 8 in.

ANTIQUES AND COLLECTIBLES ESTATE AUCTION



8058: FERNELEY RAMUS (1868 - 1937)

USD 400 - 500

Framed, a painting that depicts a village scene. Signature on bottom right to read F. Ramus, 1915. Ferneley Ramus (1868 - 1937), an artist who was a prolific painter in both oils and watercolors. H: 9 in. L: 16 1/4 in.



8059: MARCEL STARY, CANADIAN (1918-1962)

USD 500 - 800

Framed, a watercolor painting that depicts a bare tree in a barren land. Signature to read M. Stary. Marcel Stary (1918 - 1962) was a Canadian artist. He was born in the former Czechoslovakia and studied Art in Prague. Marcel escaped during the Soviet occupation and came to Montreal, Canada in 1948. He traditionally worked in oil, watercolor and acrylics. His subjects included the landscape and life of the Inuit people in the Arctic and Labrador. H: 14 1/4 in. L: 18 1/4 in.



8060: PIERRE LAWTON, CANADIAN (1933 -)

USD 1,000 - 2,000

Depicts a fisherman dragging the fishing net back to his fishing boat. Framed and signature on the bottom right. Pierre Lawton (1933 -), is a French Canadian artist. H: 11 in. x W: 14 in.



8061: LARGE CHINESE BRONZE-MOUNTED PORCELAIN VASE

USD 200 - 300

With floral motif on blue ground, ornately carved/chaised bronze plates decorated the foot, body, neck and mouth of the vase. H: 18 in.



8062: CHINESE CARVED STONE HEAD OF A SCHOLAR

USD 300 - 500

H: 20 in. W: 10 in.



8063: CHINESE BLUE AND WHITE PORCELAIN VASE

USD 400 - 800

Of ovoid-shaped body, decorated with tendrils and blooms in branches motif on white ground.



8064: LARGE CHINESE GU VASE

USD 800 - 1,000

Painted with figural scene around the flared neck. With six-character mark on bottom to read Guangxu. H: 14 1/8 in.

ANTIQUES AND COLLECTIBLES ESTATE AUCTION



8065: JORDI PLA DOMENECH, SPANISH (1917 - 1992)

USD 200 - 500

A lithograph that depicts a mother and her daughter. Pencil signed on bottom. Signed on bottom right to read Pla Domenech. Jordi Pla Doenech (1917 - 1992) was a Spanish painter who was known for painting. The record sold price for this artist in auction is USD \$600 for "Woman in Perfume Bottle", which was sold in 2010. H: 14 3/4 in. L: 15 in.



8066: MODERN OIL PAINTING OF STILL LIFE

USD 500 - 800

Depicts plate-full of fruits and a tea cup on a table. Signature on bottom left to read M. Dupond. H: 12 3/4 in. L: 21 3/4 in.



8067: FRAMED OIL ON CANVAS PAINTING OF DUTCH CITY

USD 800 - 1,200

Framed, an oil painting that depicts a Dutch city scene. Signature on bottom to read R. Brosse. H: 13 1/8 in. L: 11 1/8 in.



8068: FRAMED OIL ON CANVAS OF A BARN SCENE

USD 500 - 1,000

Framed, an oil painting that depicts the inside of a barn with roosters, birds and a duck eating. Unsigned. H: 11 1/4 in. L: 14 1/4 in.



8069: DUTCH OIL ON CANVAS PAINTING OF A VILLAGE SCENE

USD 500 - 800

Framed. Painted in great details of a village town scene. Unsigned. H: 15 in. L: 1 1/4 in.



8070: GILTWOOD FRAMED OIL ON CANVAS PAINTING

USD 500 - 800

Giltwood framed. Depicts an old woman telling story to two kids. Unsigned. H: 13 in. x W: 9 1/2 in.



8071: CHINESE BLUE AND WHITE RICE BOWL

USD 400 - 800

With figural pattern depicting of soldiers on horses in the forest approaching a palace gate. Inside of the bow has a man perched on a tree. Four-character mark on the base. H: 6 1/2 in. D: 10 3/4 in.



8072: CHINESE PORCELAIN VASE, REPUBLIC PERIOD

USD 200 - 500

Mostly in famille verte; depicting a picturesque scene of the palace grounds, with court yard filled with lush greens and scenic mountainous landscape behind the palace. Orange wings attached as handles on the neck of the vase. Squared stamp in iron red on the base. H: 16 1/2 in.

ANTIQUES AND COLLECTIBLES ESTATE AUCTION



8073: CHINESE FAMILLE ROSE JAR

USD 500 - 800

With a bulbous body rising to a straight neck. Painted with antiques and auspicious fruit. H: 13 3/4 in.



8074: BRONZE CANDLE HOLDER OF AN ANGEL

USD 100 - 200

A female angel carrying a trumpet shaped candle holder standing on a square pedestal. H: 15 in.



8075: CHINESE PAINTING OF A BIRD UNDER A LEAF

USD 300 - 500

Signature to read Sheng Zhi. L: 60 in. (152.5cm) x W: 17 3/4 in. (45 cm)



8076: FRAMED PAINTING OF A SHIP BY HAGUENAUER

USD 600 - 800

Framed. Depicts a ship near a port, signature on top left to read Haguenauer 50. H: 19 3/4 in. L: 24 in.



8077: ROMEO VINCELETTE, CANADIAN (1902 - 1979)

USD 1,000 - 1,200

Depicts a snowy landscape. Signature on bottom right to read R. Vincelette. Romžo Vincelette (1902 - 1979) was a Canadian painter, specialized in fall and winter landscape paintings. H: 20 in. L: 24 in.



8078: PAINTING OF BOATS SAILING NEAR PORT (DAMAGED)

USD 200 - 300

Framed, the painting is damaged. Depicts men sailing on boats, not signed. H: 10 1/2 in. L: 14 in.



8079: GILTWOOD FRAMED OIL ON BOARD PAINTING OF HOLLAND

USD 400 - 800

Landscape. No signature could be found.



8080: FRAMED DRAWING OF A FARMER AND A HOUSE

USD 100 - 200

Framed. A drawing of a farmer and a house. Signed on bottom and signature to read C. McBean. H: 10 in. L: 13 in.

ANTIQUES AND COLLECTIBLES ESTATE AUCTION



8081: CHINESE BRONZE PLANTER

USD 100 - 200

Incised with a continuous design of an austere temple. D: 10 in. x H: 10 in.



8082: ANTIQUE 19TH C. SANG DE BOEUF OCTAGONAL VASE

USD 200 - 500

Four-character mark on the bottom to read Yongzheng. H: 17 1/2 in.



8083: CHINESE BLUE AND WHITE ROLEAU VASE

USD 200 - 300

Painted on the body, and on the neck with "Double Happiness", against a background flanked on the neck with two chilongs as handles. H: 19 1/2 in.



8085: WATERCOLOR DRAWING OF A CITYSCAPE

USD 300 - 400

A watercolor painting that depicts a cityscape. Signed on bottom right which is illegible. H: 13 in. L: 18 3/4 in.



8086: FRAMED PAINTING OF A WINDMILL

USD 400 - 600

Giltwood framed, depicts a windmill in a rural town. Signature on bottom right which is illegible. H: 16 in. x W: 11 1/2 in.



8087: FRAMED DUTCH PAINTING OF A WINTER CITY SCENE

USD 800 - 1,200

Giltwood framed, depicts of a quaint town, with people strolling on a frozen lake. Unsigned. H: 10 in. x L: 14 1/2 in.



8088: 18TH C. PAINTING OF A NOBLE FAMILY GATHERING

USD 500 - 1,000

Depicts a family embracing each other in a grand living room. H: 14 1/4 in. x L: 22 in.

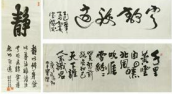


8089: 19TH CENTURY OIL ON CANVAS PAINTING

USD 200 - 300

Giltwood framed, depicts a woman in front of fences. H: 18 1/8 in. L: 13 in.

ANTIQUES AND COLLECTIBLES ESTATE AUCTION



8090: THREE CHINESE CALLIGRAPHY SCROLLS

USD 300 - 500

Signature to read Bao Jie. H: 45 1/2 in., L: 19 3/4 in.



8091: ANTIQUE INDIAN BRONZE FIGURE OF GANESHA

USD 50 - 100

H: 7 1/4 in.



8092: ENGLISH INLAID WOODEN BOX WRITING CASKET

USD 150 - 200

Of rectangular form, the hinged top opening to reveal a secret compartment with folded leather top and smaller compartments for writing implements. H: 7 in. W: 15 3/4 in. Depth: 10 in.



8093: PAIR OF CHINESE ENAMELED PORCELAIN HANGING VASES

USD 300 - 500

Each vase is painted with a figural scene with inscription. Each vase has a four-character mark on the back to read Qianlong. H: 7 in. x W: 5 in.



8094: GILTWOOD FRAMED PAINTING ON BOARD OF A DUTCH SCENE

USD 250 - 350

Giltwood framed, depicts a beautiful canal city, painted in fine details. H: 9 1/2 in. L: 13 1/2 in.



8095: DUTCH OIL ON BOARD PAINTING OF A TOWN SCENE

USD 350 - 700

Framed, depicts a daily life scene of town people on street. Not signed. H: 14 in. L: 10 in.



8096: FRAMED LANDSCAPE PAINTING

USD 500 - 700

Framed, a watercolor painting that depicts a grass field with tall trees in the background. Signature to bottom right to read F. Wiohurshi, dated 22. H: 9 1/2 in. x L: 11 3/4 in.



8097: FRAMED PAINTING OF AN OLD GENTLEMAN

USD 500 - 1,000

Framed, a watercolor painting that depicts an old man in a sitting position. Signature on bottom reads Shlossberg. H: 19 in. L: 13 3/8 in.

ANTIQUES AND COLLECTIBLES ESTATE AUCTION



8098: FRAMED PAINTING OF A RURAL CITY SCENE

USD 500 - 800

Depicts a woman feeding chicken next to a river. Signature to the bottom right. H: 16 1/4 in. x L: 20 1/4 in.



8099: CHINESE SCROLL PAINTING OF LANDSCAPE

USD 150 - 300

Signature to read Feng Chaoran. L: 40 in. x W: 17 1/4 in.



8100: CHINESE BOTTLE-SHAPED PORCELAIN VASE

USD 500 - 1,500

With colorful design of flowers, shrubs and pomegranate fruits on white bulbous body. H: 15 in.



8101: CHINESE GREEN GLAZED VASE

USD 200 - 500

Raised on a short foot, with ribbed design all around the body. H: 15 in.



8102: TWO POTTERY BOWLS, ARTIFACT FROM A SHIPWRECK

USD 50 - 100

Both of concave forms, and raised on a short foot. H: 2 3/4 In. D: 6 5/8 In.



8103: HERMAN HEIMLICH, CANADIAN (1904 - 1986)

USD 1,000 - 1,200

Depicts fruits and potted flowers. Signature on bottom right to read H. Heimlich 61. Possibly by Herman Heimlich (1904 - 1986), a Canadian artist. His works were featured in an exhibition at the Art Museum University of Toronto, Justina M. Barnicke Gallery. H: 16 in. L: 19 in.



8104: WILLEM FREDERIK NOORDIJK, DUTCH (1887 - 1970)

USD 800 - 1,000

Painted in great details, depicts a farmer and two milk cows. Signed on bottom right to read W. Noordijk. Willem Frederik Noordijk (1887 - 1970) was a Dutch painter who was known for landscape paintings. The record sold price for this artist in auction is USD \$1,734 for his work, "Skaters by the City Walls of Naarden," which was sold in 2001. H: 16 in. L: 23 3/4 in.

ANTIQUES AND COLLECTIBLES ESTATE AUCTION



8105: OIL PAINTING ON CANVAS OF A POTTED FLOWERS

USD 50 - 100

A scene of a pot of blooming flowers. H: 36 in. L: 24 in.



8106: OIL PAINTING ON CANVAS OF A THINKING WOMAN

USD 300 - 500

A deep thinking woman sits on the beach cafe seat, wearing a red beautiful dress. Signature is on the bottom left corner. H: 36 in. L: 24 in.



8107: A FLIRTATIOUS MOMENT, AFTER JOHANN.HAMZA 19TH C

USD 300 - 500

Oil painting on canvas; In the foreground, a maiden holding hands with a soldier seated. After artist Johann Hamza, German, 1850-1927H: 24 in., L: 36 in.



8108: CHINESE PAINTING OF A WOMAN

USD 300 - 500

Signature to read He Jiaying. H: 17 1/8 in. x W: 13 1/4 in.



8109: CHINESE BLUE AND WHITE MEIPING VASE

USD 150 - 250

With floral and meandering tendrils design.



8110: CHINESE ENAMELED FIGURAL VASE

USD 200 - 300

Beautifully painted in multicolor of a figural scene around the body. Four-character mark on the bottom.H: 18 in. (45.7 cm)



8111: CHINESE CARVED BISQUE PORCELAIN VASE

USD 300 - 600

Decorated in relief of dragons chasing flaming pearl on the bulbous body. Flanked by two chilongs in the neck as handles, with a flaring mouth. H: 26 7/8 in.



8112: OIL PAINTING ON CANVAS OF LANDSCAPE

USD 250 - 350

An oil on canvas painting that depicts a view of a bridge cross the river of a small town. Signature on bottom right to read Leifton. H: 24 in. L: 36 in.

ANTIQUES AND COLLECTIBLES ESTATE AUCTION



8113: OIL PAINTING ON CANVAS OF A LUXE GARDEN

USD 200 - 300

A beautiful oil on canvas painting that depicts a luxe garden of a lovely house backyard, with some cute chairs and a table are prepared for an afternoon tea. Unsigned.H: 24 in. L: 36 in.



8114: OIL PAINTING ON CANVAS OF A POTTED FLOWERS

USD 500 - 800

A scene of a potted plant with different kind of beautiful blooming flowers. Signature read as SacksonH: 24 in. L: 36 in.



8115: PAINTING OF CHILDREN IN HOT AIR BALLOONS

USD 250 - 350

The baskets brimming with figures playing instruments. H: 24 in., L: 36 in.



8116: OIL PAINTING ON CANVAS OF PARISIAN SHOPS

USD 250 - 350

Artist's signature to the bottom right. H: 24 in. L: 36 in.



8117: CHINESE MULTI-PANELED IRON RED VASE

USD 400 - 800

In meiping-shaped body, depicting of a peacock amidst flowers and leaves. H: 18 1/8 in.



8118: CHINESE GREEN GLAZE VASE

USD 150 - 350

The tapered bottom slowly swelled to a bulbous shoulder; covered overall with a dark green glaze.



8120: OIL PAINTING ON CANVAS OF A HARBOUR SCENE

USD 300 - 500

An oil on canvas painting that depicts a coastal city scene, with a yacht at the city port. Unsigned.H: 13 1/2 in. L: 16 1/2 in.



8121: OIL PAINTING ON CANVAS OF LANDSCAPE

USD 200 - 250

An oil on canvas painting that depicts a view of countryside, with boats flow on the river. Signature on bottom right to read Leifton. H: 24 in. L: 36 in.

ANTIQUES AND COLLECTIBLES ESTATE AUCTION



8122: OIL ON CANVAS PAINTING OF OVERGROWN POND

USD 200 - 300

Signature to read Chucn Styles on bottom right. H: 24 in. L: 36 in.



8123: OIL ON CANVAS PAINTING OF A COUNTRY CABIN

USD 200 - 250

A beautiful oil on canvas painting. Depicts a scene of a beautiful country cabin with its front alley, surrounding by different plants and flowers in the forest. H: 24 in. L: 36 in.



8124: OIL PAINTING ON CANVAS OF A POTTED FLOWERS

USD 200 - 300

A scene of a potted plants with different beautiful blooming flowers. Unsigned. H: 24 in. L: 36 in.



8126: ANTIQUE LARGE JAPANESE IMARI CHARGER

USD 200 - 300

The center decorated with blossoming chrysanthemums amongst scrolling foliage encircled by panels of floral and bird designs. Predominately in red, blue enamels with some gilding. Blooming peonies amidst dense foliage painted to the exterior. Diameter: 18 in.



8127: JAPANESE BLUE AND WHITE CHARGER

USD 100 - 200

With scene depicting solitary figure in a landscape, surrounded by trees, mountains and buildings. Orange cranes, sun and decorative accents. Diameter: 16 in.



8128: STILL LIFE OIL PAINTING BY CARL RONNEY

USD 800 - 1,200

A magnificent oil on canvas painting that depicts a scene of different kinds of fruit on some silver plates. Signature on bottom right to read Carl Ronney. H: 24 in. L: 36 in.



8129: OIL PAINTING ON CANVAS OF LANDSCAPE

USD 200 - 300

An oil on canvas painting that depicts a view of riverside which shows a countryside area. Signature on bottom right to read Leifton. H: 24 in. L: 36 in.



8130: OIL PAINTING ON CANVAS OF SEASHORE

USD 100 - 300

An oil painting that depicts a seashore scene, surrounding by some green trees. Signature on bottom right to read Leifton. H: 24 in. L: 36 in.

ANTIQUES AND COLLECTIBLES ESTATE AUCTION



8131: 20TH CENTURY OIL PAINTING BY ALLEN HADLEY

USD 350 - 450

Depicts four children playing on the beach and finding shells in summer time. Signature on bottom left to read Allen Hadley. H: 24 in. L: 36 in.



8132: OIL PAINTING OF A BEAUTIFUL GARDEN BY W. TODD

USD 200 - 300

An oil painting that depicts a beautiful garden. Signature on bottom left to read W. Todd. H: 24 in. L: 36 in.



8133: CHINESE SCROLL PAINTING OF A BOY ON A COW

USD 300 - 500

H: 35 1/8 in. X W: 8 1/8 in.



8134: LARGE 19TH CENTURY JAPANESE IMARI CHARGER

USD 300 - 400

From the Private Collection of Harry Lawrence of Laguna Beach. Enameled with geese on rockery and in flight below various geometrical designs, within panels of red and blue foliage around the rim, painted around the exterior splashes of three meandering tendrils and flower blossoms. H: 18 1/2 in. (47cm)



8135: OCTAGONAL CHINESE FAMILLE VERTE PORCELAIN CHARGER

USD 300 - 500

Decorated with figural motif and garlands, exterior side of the plate has floral wreaths



8136: CHINESE CARVED BONE FAN

USD 250 - 350

Carved with multiple scenes of daily life.



8137: OIL ON CANVAS PAINTING OF A SEASIDE COTTAGE

USD 250 - 350

Signature on bottom left to read Leifton. H: 24 in. L: 36 in.



8138: BEAUTIFUL STILL LIFE OIL PAINTING BY B. PERRET

USD 200 - 300

An oil on canvas painting that depicts a scene of a different kind of blooming beautiful flowers potted in a vase. Signature on bottom right corner to read B. Perret. Bertrand Perret (XIX-XX) was an artist who was born in XIX. The oldest auction result registered online was for the painting, "Still Life with Fruit, Pitcher and Tumbler" which was sold in 2007 at Jackson'sH: 24 in. L: 36 in.

ANTIQUES AND COLLECTIBLES ESTATE AUCTION



8139: OIL PAINTING ON CANVAS OF A SCENE OF COUNTRYSIDE

USD 150 - 250

Depicting a scene of a countryside. A flowing river is on the left and right side is a small path towards the forest. A pavilion stands in the middle. Signature on bottom left to read Burch Field. H: 24 in. L: 36 in.



8140: OIL PAINTING ON CANVAS OF STILL LIFE

USD 150 - 250

H: 24 in. L: 36 in.



8141: OIL PAINTING OF LANDSCAPE BY JAMES MCDUKEI

USD 250 - 350

Painted beautifully of a countryside house next to a pond; and a lady is walking down a path. Signed on bottom right to read James McDukei. H: 24 in. L: 36 in.



8142: FRAMED PAINTING OF SUNBURST

USD 300 - 400

Signature to read Leo Witte. H: 28 in. L: 20 1/4 in.



8144: ANTIQUE CHINESE BRONZE FOOD VESSEL

USD 300 - 800

Raised on a plinth, flanked by two creatures on the sides as handles. H: 17 in. W: 22 in.



8145: CHINESE BRONZE STATUE OF A SEATED GUANYIN

USD 500 - 800

Seated in a flowing gown on a double-lotus platform.



8146: CHINESE BLUE AND WHITE GINGER JAR

USD 400 - 800

Size:



8147: FRAMED PAINTING OF TIGER IN THE FLOWER

USD 300 - 400

Signature to read Leo Witte to the lower right. H: 27 1/4 in. L: 20 1/2 in.

ANTIQUES AND COLLECTIBLES ESTATE AUCTION



8148: FRAMED COLLAGE PRINT OF GATHERING

USD 300 - 400

No signature could be found. H: 20 1/4 in. L: 30 1/2 in.



8149: STEPHEN BARTLETT, BRITISH (1942-)

USD 500 - 800

Depicts an abstract take of a potted plant, predominantly in blue, green and red colors. Artist's name is printed on the bottom. H: 22 1/2 in. x W: 21 1/2 in.



8150: FRAMED PRINT OF A CITY HARBOR SCENE BY CARZON

USD 350 - 550

Framed. A print that depicts a city harbor scene. Pencil signed on the bottom and numbered 79/100.



8151: CHINESE PAINTING OVER PRINT OF PEONIES

USD 300 - 500

Depicts overflowing peonies in a vase with a foo dog sitting on the side. Inscription to top right. H: 36 in. x L: 21 in.



8152: OIL ON CANVAS PAINTING OF CASTLE IN THE MOUNTAIN

USD 200 - 300

Signature to read as J. Conte to the bottom right. H: 24 in. L: 30 in.



8153: CHINESE SCROLL PAINTING OF A BEAUTY

USD 300 - 500

Signature to read Fu Bao Shi. H: 40 3/4 in. x W: 12 1/8 in.



8154: ANTIQUE BLUE AND WHITE SQUARE VASE WITH LID

USD 300 - 500

Each side of the rectangular panel is hand-painted with a figural scene. H: 13 3/4 in.



8155: LARGE CHINESE CELADON JAR

USD 200 - 500

Flanked by two creature heads on the shoulder as handles. H: 14 1/2 in.

ANTIQUES AND COLLECTIBLES ESTATE AUCTION



8156: STILL LIFE WITH BEACH VIEW OIL ON CANVAS PAINTING

USD 100 - 200

An oil on canvas painting that depicts a bowl of ripe fruits at a patio that overlooking a beautiful coast. Unsigned. H: 30 in L: 24 in.



8157: OIL ON CANVAS PAINTING OF SEA COVE

USD 100 - 200

An oil on canvas painting that depicts ocean waves crashing onto the rocky coast. Signature on the bottom right which is illegible.



8158: OIL PAINTING ON CANVAS OF POTTED FLOWERS

USD 300 - 500

Depicts beautiful and colorful blossoming flowers potted in a basket. H: 24 in. L: 36 in.



8159: OIL PAINTING ON CANVAS BY O. HUCKET

USD 800 - 1,000

On a light yellow ground. Signed to read 'O. Hucket.' H: 48 in., L: 24 in.



8160: OIL ON CANVAS PAINTING OF A GARDEN WITH DIRT ROAD

USD 300 - 400

Beautiful blossoming flowers are blooming on the two sides of the path. H: 30 in L: 40 in.



8161: RENOIR REPRODUCTION OIL ON CANVAS PAINTING

USD 500 - 800

In the style of Pierre-Auguste Renoir's "Dance in the Country." H: 36 in. L: 24 in.



8163: CHINESE BLUE AND WHITE GLOBULAR VASE

USD 300 - 800

Six-character mark to read Qianlong on the bottom. H: 18 1/2 in.



8164: 19TH C. OBLONG-SHAPED PORCELAIN JARDINIERE

USD 1,400 - 1,800

Beautifully hand-painted around the porcelain jardiniere with children playing; flanked by two lion-head ring handles on two sides. With the original metal lining. The rim is chipped. L: 20 in. Depth: 7 in.

ANTIQUES AND COLLECTIBLES ESTATE AUCTION



8165: SMALL KOREAN BLUE AND WHITE BOWL

USD 200 - 300

Painted on the exterior with blossoming flowers, with a wooden stand. Damaged around the rim. H: 3 in. D: 7 in. Part of the collection of Mrs. Daisy Lintilhac



8166: OIL PAINTING ON CANVAS OF A GIRL READING

USD 250 - 350

Signature to read M. Mitvet. Depicting a girl thinking. H: 36 in. L: 22 in.



8167: OIL ON CANVAS PAINTING OF LOVERS BY M. SOVINO

USD 800 - 1,000

Both of them are sitting down in a forest setting, with a bird and a flower basket. Signed on bottom to read M. Sovino. H: 36 in L: 24 in.



8168: ANTIQUE CHINESE BRONZE VESSEL OF A CREATURE

USD 800 - 1,000

The creature with two horns and mouth agape; with another face on its rear end. The center register with Archaic-style design and with a zoomorphic handle attached. On a raised, slightly flared base. H: 10 in.



8170: 18 CENTURY CHINESE LOW HARDWOOD TABLE

USD 500 - 800

On four hooved feet, the openwork carved aprons with scroll design. H: 10 1/2 in., L: 20 1/4 in., W: 13 in. Beverly Hills Private Collection of Mr. Bary



8171: CHINESE SILK EMBROIDERED OF SCHOLARS

USD 200 - 300

Depicting a scene of five Chinese scholars in the garden. With one is dancing and one is walking and the other three scholars playing Weiqi. H: 16 1/2 in. L: 40 in.



8173: CHINESE BLUE AND WHITE DISH, EARLY QING DYNASTY

USD 300 - 500

Painting in the center with a Chinese character "Shou", encircled by five bats. On a wooden stand. H: 3 1/4 in. D: 11 in. Part of the collection of Mrs. Daisy Lintilhac



8174: CHINESE BLACK GLAZED RIBBED VASE

USD 400 - 800

H: 10 1/8 in.

ANTIQUES AND COLLECTIBLES ESTATE AUCTION



8175: CHINESE CARVED SPINACH JADE BEAUTY

USD 200 - 300

Attached to carved wood stand. H: 6 1/4 in.



8176: CHINESE PAINTING OF A PINE TREE

USD 150 - 250

Inscription on bottom right.



8177: 75CHINESE LANDSCAPE PAINTING

USD 150 - 250

Inscription on top right.



8178: PAINTING OF AN EUROPEAN CANAL CITY STREET SCENE

USD 250 - 350

Signed on bottom right to read Anakawa.



8179: PAINTING OF A GODDESS

USD 300 - 500

Signed on bottom right.



8180: CHINESE PAINTING OF A RURAL SCENE

USD 200 - 300

With farmers and cows in a rural setting. Inscription on the right.



8181: CHINESE SCROLL OF THE THREE-CHARACTER CANON

USD 300 - 600

Mounted against a decorative ground. Length:



8182: A BEAUTIFUL CHINESE SCROLL

USD 100 - 500

Depicting of characters under a large tree, inscription on the left of the scroll. H: 51 in. L: 19 in.

ANTIQUES AND COLLECTIBLES ESTATE AUCTION



8183: CHINESE TURQUOISE GROUND BOTTLENECK VASE

USD 300 - 500

With foo lions. Double-ring six-character mark to read Kangxi on the bottom. H: 16 in.



8185: CHINESE CARVED STONE FIGURE OF STANDING GUANYIN

USD 500 - 1,500

In spinach color. With her hair in a top knot bun and wearing a hooded robe. Holding a bottle in one hand and brush in the other. H: 13 1/8 in.



8186: HAND CARVED BAMBOO FIGURE OF A OLD MAN

USD 50 - 100

With crutch. H: 11 in.



8187: CHINESE CALLIGRAPHY SCROLL

USD 300 - 500

Seven character calligraphy. H: 53 1/4 in. L: 12 1/4 in.



8188: BURMESE KALAGA TAPESTRY

USD 400 - 800

Figures in costumes dancing at night in a forest.



8189: LARGE BEAUTIFUL CHINESE SILK TAPESTRY

USD 400 - 800

Depicting of various activities in the courtyard, filled with backgrounds of trees, shrubs, and landscapes.



8190: SMALL CHINESE SILK RUNNER

USD 800 - 1,000

Depicting colorful designs and inscription in black, all on red background.



8192: CHINESE BLUE AND WHITE PORCELAIN VASE

USD 200 - 500

Painted all around the body with fishes. Flanked by two creature ring handles on the shoulder. H: 9 1/2 in.

ANTIQUES AND COLLECTIBLES ESTATE AUCTION



8194: CHINESE BRONZE FIGURE OF A SEATED BUDDHA

USD 400 - 800

With cracks around the figure



8196: PAIR OF FIGURES OF BOYS SEATED ON BUFFALOS

USD 1,000 - 1,500

Of two boys riding buffalos. Mark to read Qianlong at the back.



8197: PAIR OF CHINESE BRONZE RAMS

USD 1,000 - 2,000

The rams are modeled in standing position. Each of the ram has its front leg stepping on top of a coin and a stack of ingots respectively. H: 15 1/2 in. L: 13 3/4 in.



8198: CHINESE BRONZE STATUE OF A SEATED GUANYIN

USD 500 - 800

Sitting atop a lotus pedestal, and holding a baby. H: 13 in.



8199: 19TH CENTURY CHINESE BLUE AND WHITE GRAVY BOAT

USD 400 - 800

Painted on the exterior with blooming flowers, and flanked by a handle. H: 3 1/4 in. L: 9 1/4 in. Part of the collection of Mrs. Daisy Lintilhac



8200: ANTIQUE SMALL CHINESE BLUE & WHITE CEREMONIAL CUP

USD 300 - 500

Hand-painted with a garden scene, with poem writing around the body. On a wooden stand. With the original purchase sticker on the bottom from Warren Imports. H: 2 1/2 in. D: 3 18 in. Part of the collection of Mrs. Daisy Lintilhac



8201: CHINESE CELADON TRIPOD CENSER

USD 500 - 800

With bulbous-shaped body, and a cover of Japanese silver openwork design of meandering tendrils. Size: H: 5 in.



8202: A SET OF TWO RICE BOWLS

USD 400 - 800

Diameter:

ANTIQUES AND COLLECTIBLES ESTATE AUCTION



8203: SANG DE BOUEF CHINESE DOUBLE GOURD VASE

USD 500 - 800

With two inverted L handles connecting the upper and bottom part of the gourd. H: 10 3/4 in.



8204: A CHINESE JADE FIGURE, OF A MONKEY ON A MONKEY

USD 400 - 800

A small monkey playfully rests on the shoulder of a bigger monkey.



8205: SET OF FOUR WINE CUPS

USD 500 - 800

Size: H: 2 3/4 in. D: 3 3/4 in.



8207: SET OF FOUR CONICAL WINE CUPS

USD 500 - 800

In earthen color, footed. Size: H: 1 3/4 in. D: 4 in.



8208: CHINESE SHANG DYNASTY-STYLE BRONZE BELL, WITH BOX

USD 800 - 1,200

Made from a hand-carved mold of various characters and inscriptions. Size: H: 10 3/4 in.



8209: RECTANGULAR CHINESE BRONZE VESSEL

USD 400 - 800

Raised on four column legs, with two upright handles. Size: H: 9 1/2 in. L: 8 1/4 in. W: 6 1/2 in.



8210: A PAIR OF SEMI CONICAL CEREMONIAL CUPS

USD 300 - 400

Comes with a box H: 1 3/4 in. D: 3 3/4 in.



8211: A CHINESE CELADON TRIPOD CENSER

USD 500 - 800

With two twisted handles on rim, with beast biting a ring on each side of the bulbous-shaped body, and legs with beast face. H: 5 1/2 in.

ANTIQUES AND COLLECTIBLES ESTATE AUCTION



8212: CHINESE REPUBLIC PERIOD FAMILLE ROSE BOWL W/ COVER

USD 200 - 300

H: 2 in. D: 5 3/4 in. Part of the collection of Mrs. Daisy Lintilhac



8213: CHINESE BRONZE FIGURE OF A SEATED BUDDHA

USD 400 - 800

Seated on a double lotus stand.



8215: ELABORATE CHINESE BRONZE INCENSE BOX AND COVER

USD 800 - 1,200

Etched with various design all over its body, with tall wilted petal handles. Size: H: 11 1/2 in. L: 14 in W: 5 in.



8216: CHINESE BRONZE VESSEL, WITH BOX

USD 400 - 800

In a mythical beast form. Size: H: 7 1/2 in. L: 7 3/4 in.



8217: BRONZE STATUE OF BUDDHA - SOLD SEPARATELY

USD 1,000 - 2,000

Standing atop of lotus pedestals, with left hands holding vessels. H: 19 1/2 in.



8218: CHINESE BLUE AND WHITE GU VASE

USD 250 - 350

Beautifully painted with blossoming flowers with scrolling vines all around the body, with a large flaring mouth.



8219: LARGE CHINESE TURQUOISE GROUND VASE

USD 300 - 500

Painted around the body with an immortal scene. Flanked by two red elephant-trunk as handles. Four-character mark on bottom to read YongQing ChangChun. H: 20 7/8 in.



8220: BLUE AND WHITE BOTTLE VASE WITH METAL TRIMS

USD 150 - 350

Painted with a war scene on the body, flanked by two handles on the neck. Mark to the bottom. H: 15 7/8 in.

ANTIQUES AND COLLECTIBLES ESTATE AUCTION



8222: FRAMED PAINTING OF SEAFOOD

USD 1,000 - 1,200

Depicts a table-full of seafood lying on a table. Signature on bottom right to read M. Dupead. H: 12 1/2 in. L: 31 in.



8223: FRAMED OIL PAINTING ON CANVAS OF LILY

USD 200 - 500

Signature to read Ldsmourer. H: 30 in. L: 18 in.



8224: FRAMED TAPESTRY OF A PARTY

USD 300 - 500

H: 18 in. L: 34 1/2 in.



8225: MODERN WATERCOLOR PAINTING ON PAPER

USD 300 - 400

Signature to read Terrance Curtis. H: 18 in. L: 24 in.



8226: 19TH CENTURY DUTCH OIL PAINTING

USD 500 - 800

Dutch Golden Age painting is the painting of the Dutch Golden Age, a period in Dutch history roughly spanning the 17th century during and after the later part of the Eighty Years' War (1568-1648) for Dutch independence. H: 16 in. x W: 24 in.



8227: OIL PAINTING OF A CITY SCENE BY CHER HOEVEN

USD 300 - 500

Framed, an oil painting that depicts a city street scene. Signature to read Cher Hoeven. H: 26 in. L: 19 in.



8228: FRANCOIS (CARBUCCIA) CARBU, FRENCH (1896 - UNKNOWN)

USD 800 - 1,000

Framed, depicts a shore scene with waves crashing on the shore. Signature on bottom to read Carbu. Francois (Carbuccia) Carbu, was a French artist who was known for painting of seascapes and boats. H: 21 in. L: 38 1/4 in.



8231: OIL PAINTING ON CANVAS, OF A LANDSCAPE

USD 200 - 500

Size: H20 1/4in x L30 1/4in

ANTIQUES AND COLLECTIBLES ESTATE AUCTION



8232: OIL PAINTING ON CANVAS, OF A FARM SCENE

USD 500 - 800

Size: H: 30 in. L: 25 in.



8233: OIL PAINTING ON CANVAS, OF A BEAUTIFUL GIRL

USD 200 - 500

Size: H: 34 in. L: 23 in.



8235: OIL PAINTING ON CANVAS OF FARMERS

USD 500 - 800

Working on the field, cutting woods in a with two horses. Signature on bottom left to read J. Evelevn. Without Frame: L: 30 in. H: 20 in.



8236: FRAMED PRINT OF LANDSCAPE BY ROBERT WOOD

USD 500 - 800

Framed. A print of a view of a waterfall goes through the mountains and forest. Signed to read Robert Wood, and numbered 955/1000 on the bottom. L: 22 1/2 in; H: 18 in.



8237: GYULA NEMETH GUTAHAZY, HUNGARIAN (1880 - 1935)

USD 1,000 - 2,000

Framed. An oil painting that depicts three pet dogs that are chained to a tree on an open field. Gyula Nemeth Gutahazy was a Hungarian impressionist & Modern painter who was born in 1880. H: 16 in. W: 19 1/2 in.



8238: FRAMED OIL PAINTING OF A COUPLE BY SHLOSSBERG

USD 800 - 1,200

Framed. An oil painting of a couple. Signed to read Shlossberg. H: 17 3/4 in. L: 26 1/4 in.



8239: DANIEL SHERRIN, BRITISH (1868 - 1940)

USD 5,000 - 7,000

Depicts a couple working on a field. Signature on bottom right to read D. Sherrin. Daniel Sherrin (1868 - 1940) was an English painter who was commissioned by King George V to paint Sandringham and this painting is still hanging in Buckingham Palace. His work is highly detailed, describing objects such as ships and cattle accurately while maintaining a sense of light and atmosphere. Sherrin's work can be found in mostly British museum collections, including the Bury Art Museum and the Williamson Art Gallery & Museum in Cloughton. The record sold price for this artist in auction is USD \$16,159 for "2 Works: Untitled Landscapes", what was sold at Pundole's in 2012. Exhibited : The Royal Academy H: 16 in. L: 24 in.

ANTIQUES AND COLLECTIBLES ESTATE AUCTION



8240: FRAMED OIL ON CANVAS PAINTING OF STILL LIFE

USD 300 - 500

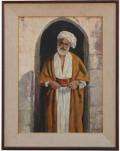
Framed. A beautiful oil on canvas painting of a luxurious bouquet of blossoming flowers that are potted in a chalice.



8241: FRAMED OIL ON CANVAS PAINTING OF A BEARDED MAN

USD 400 - 600

Framed. An oil painting that depicts a bearded man. Signed on bottom which is illegible. H: 26 in. L: 21 3/4 in.



8242: FRAMED OIL PAINTING OF A MAN BY SHLOSSBERG

USD 500 - 1,000

Framed, depicts an oil man dressing in long robe. Signature to read Shlossberg on bottom right. H: 24 in. L: 18 1/4 in.



8243: MODERN OIL LANDSCAPE PAINTING BY RR. RENAD

USD 500 - 800

Framed, a modern oil painting that depicts a tranquil stream amongst a fall forest. Signature on bottom right to read RR. Renad, 1950. H: 17 in. x W: 13 1/8 in.



8244: UNUSUAL CHINESE BLUE AND WHITE MOONFLASK

USD 800 - 1,000

Raised on a short, sprayed leg. Finely painted with an unusual design with geometric patterns around the body. Flanked by two handles on the shoulder. Six-character mark to read Xuande on the neck. H: 11 1/2 in.



8245: CHINESE IMPERIAL YELLOW GLOBULAR VASE

USD 500 - 800

Finely painted with a flying dragon chasing a flaming pearl around the globular body against the imperial yellow background. Flanked by a long, narrow neck with a flaring mouth. Six-character mark to read Qianlong. H: 15 in.



8247: FINE CHINESE MULTICOLOR POTTERY VASE

USD 500 - 700

Finely painted with multicolor all over the vase, decorated with foo lions in low relief around the bulbous body. Flanked by two creature head on the swelling shoulder. H: 14 1/2 in.



8248: BEAUTIFUL CHINESE BLUE & WHITE LIDDED JAR

USD 500 - 700

Beautifully decorated with panels of blossoming flowers in relief around the bulbous body. With a lid with foliated rim. H: 13 in.

ANTIQUES AND COLLECTIBLES ESTATE AUCTION



8249: CHINESE CARVED BRONZE FIGURE OF 'SHOU'

USD 500 - 800

Represents longevity in Chinese religion, he is recognized by his high, domed forehead and the peach which he carries as a symbol of immortality. H: 32 in.



8250: SET OF 16 CHINESE PLATES AND SIDE PLATES

USD 200 - 400

Square-shaped.
