

# Artingstall Auctioneers 1874



PRIVATE COLLECTION OF DR. LIN & OTHER ESTATES

---

Sunday - December 11, 2022

## PRIVATE COLLECTION OF DR. LIN & OTHER ESTATES



### 8001: MAGNIFICENT SCULPTURE OF THE 8 NOBLES TABLE SCREEN

USD 1,000 - 2,000

This fine white jade or jade-like stone sculpture is mounted on a beautifully carved hardwood frame to serve as a desk screen. About 1400 years ago, a Tang Emperor, conquered small kingdoms to build one of the greatest nations worldwide. In his battles, he relied heavily on his outstanding fast running horses, which almost always led to his victory/success. Eight of them were sculptured in large blocks of stone and are known as the 8-noble horses. Since then the 8-Noble Horses theme has become a popular painting and sculpturing motif throughout Chinese history, to express the wish of speedy success. Carved on the upper edge. From Dr. Robert I-San Lin (#4352), 86-year old senior Chinese artwork appraiser appointed by China Commission on Artwork Authentication, whose grandfather was a major Chinese antique collector/dealer in early 1900s. (His bio, published in Journal of Authentication of Artworks, 2015, is available on request). 31.8 (H) x 34.7 x 12.2 cm (including frame)



### 8002: AN IMPORTANT VASE, OF EARLY KANGXI

USD 700 - 1,400

The shape of this early Kangxi (ca. 1662-1680 AD) vase resembles some Song Dynasty Yu Hu Chwen Ping. This shape is unique for and is rare. The body is made of very fine white clay with grayish tint and is quite thick and heavy, reminiscent of the thick walled early Ming porcelain. Its glaze has a pale grayish green tint and some surface shine, reminiscent of early Ming Xuande's Shining Green Glaze. Early Kangxi imperial factory is known to imitate early Ming wares. However, the pale cobalt blue and the very refined painting are definitely early Kangxi. The line drawing and the gentle washing of the blue to cover the areas within the outlines are unprecedentedly delicate. Thus the eyes, ears, noses, beard, the crowns/head dresses, the fingers, and the facial expressions are vividly depicted with fine lines. In the painting, the 8 immortals ride on clouds and gather above mystical garden by the lakeside. Each of them carries his/her instruments. The garden has a pine tree, some exotic plants, and weird rocks and peaks. These strange motifs appear primarily in late Ming porcelain. The outer base has a very well-written Kangxi imperial mark within a double circle. Vases like this are primarily used for decorating imperial household or literati desks. Due to over 350 years of aging, the mouth rim has a few very minute chips. From Dr. Robert I-San Lin (#329), 86-year old senior Chinese artwork appraiser appointed by China Commission on Artwork Authentication, whose grandfather was a major Chinese antique collector/dealer in early 1900s. (His bio, published in Journal of Authentication of Artworks, 2015, is available on request). Brought to California in 1960s. H.25.3 cm; 1049 grams.



### 8003: A RARE QIANLONG DOU CAI DRAGON VASE

USD 3,000 - 6,000

is well formed vase has a fine, white clay body and slightly greenish glaze, typical of early Qianlong. All the decorations are outlined on the semi-dried clay body with underglaze cobalt blue. Then the semi-decorated vase was dried, covered with glaze liquid, and fired at high temperature, ca. 1300 degree C. After firing, enamels of dark green, light green, light bluish green, red, and yellow were meticulously brushed into the outlines, without lacking or extending beyond the outlines. Thereafter the semi-finished vase was further fired at a lower temperature. These enamels are almost transparent, and their surfaces flat and even, so that they look like very thin layers of colored glass. This is a feature of Qianlong Dou Cai. Looking at the green enamels against a side-lighting, the enamels emit a mother-of-pearl-like glow (called Ge Li Guan). This is also features of Qianlong Dou Cai porcelain. A very well written Qianlong mark is at the center of the outer base, with the blue pigment appears to sink to the bottom of the glaze. The main motif is playful, auspicious, non-threatening Chi Dragons (??), which are common motifs during Qianlong. Its shape closely resembles the club vase of Kangxi, suggesting it was made during early Qianlong, about 15 years after Kangxi. The enamels are consistent with early Qianlong; Qianlong reign lasted 60 years; during this long period, porcelain decoration style and enamels change significantly. From Dr. Robert I-San Lin (#1376), 86-year old senior Chinese artwork appraiser appointed by China Commission on Artwork Authentication, whose grandfather was a major Chinese antique collector/dealer in early 1900s. (His bio, published in Journal of Authentication of Artworks, 2015, is available on request). Brought to California in 1960s. H 19.7 cm; 467 g.



### 8004: AN ELEGANT KANGXI RED GLAZE BRUSH HOLDER

USD 800 - 1,600

It has a mellowed/dull red glaze that is even and unctuous. Due to 350 years of aging, the glaze has lost the surface shine that is common on newly fired porcelain. It is very heavy for its size, partly reflect the high density clay that was common of Kangxi porcelain; partly due to its thick wall. Before mid Kangxi, Kiln temperature was hard to control (usually 1300 deg C). Slightly over heating could cause the object to buckle/warp. Making the flat wall thick reduces the risk. (Round wares are exposed to lesser risk of warping.) The transparent high-fire glaze that covers the mouth rim, outer base, and inner wall has a pale greenish tint, typical of early Kangxi. The outer base has a Linzhi mushroom mark in underglaze cobalt blue of pale blue color that appear to settle at the bottom of the transparent glaze, which is also typical for early Kangxi. Emperor Kangxi ruled China for 60 years. Around the 15th to 25th year, porcelain wares were prohibited to have the reign mark, in order to avoid that the sacred reign mark to be shattered/trashed when a ware was broken. Thus most of porcelain produced then has double circle mark, or rarely rabbit or leaf mark. Linzhi mark is very rare and was used only on important porcelain wares. From Dr. Robert I-San Lin (#1513), 86-year old senior Chinese artwork appraiser appointed by China Commission on Artwork Authentication, whose grandfather was a major Chinese antique collector/dealer in early 1900s. (His bio, published in Journal of Authentication of Artworks, 2015, is available on request). Brought to California in 1960s. H. 13.9, dia. 12.0 cm; 822 g.

## PRIVATE COLLECTION OF DR. LIN & OTHER ESTATES



### 8005: A RARE POLYCHROME JAR, OF WANLI PERIOD

USD 400 - 800

This jar depicts travelers in a fantasy land. Everything seems strange: the clouds descend low to the ground and hover around trees, leaves/flowers floating in the air, strong wind sweeping the red head covers, huge insects flying in the sky. Although some of the scenes had appeared in mid Ming porcelain decoration, but never in such combination. The triangular upward petals that decorate the jar shoulder, and the golden brown glaze applied onto the mouth rim indicate it is a late Ming work. Looking at the inside wall, a circular ridge can be seen around the mid height of the jar, also indicating that it was made by luting the upper and lower halves together, a common jar-making technique of Ming, but not Qing Dynasty. The Wanli mark at the low end of the shoulder definitively confirms that the jar was made during Wanli (??). During Wanli, severe famines spread in China and most Chinese were under extreme hardship. Perhaps the hardship inspired the artist to go abstract and the jar should be recognized as an outstanding ancient abstract artwork. From Dr. Robert I-San Lin (#1524), 86-year old senior Chinese artwork appraiser appointed by China Commission on Artwork Authentication, whose grandfather was a major Chinese antique collector/dealer in early 1900s. (His bio, published in Journal of Authentication of Artworks, 2015, is available on request). Brought to California in 1960s. H.18.3 cm.

---



### 8006: AN EARLY JIAJING BLUE AND WHITE MEIPING VASE

USD 400 - 800

Its shape is very typical for early Jiajing (ca. 1522 Ð 1537 A.D. ??) and is unique for Jiajing (see e.g., Gen Bao Chan ÒIdentification of Ming and Qing Porcelain, P. 125, graph 229. ISBN 962-321-0125. The outer base was fired to pale grayish red color (kiln red) that is common for early Jiajing porcelain. The glaze has a very light bluish tint and has little surface shines due to 500 years of aging. The motif of cranes flying among clouds was very common during Jiajing, reflecting the popularity of Daoism (??). The underglaze cobalt blue is pale grayish blue and sinks to the bottom of the glaze, very typical for early Jiajing. From Dr. Robert I-San Lin (#1574), 86-year old senior Chinese artwork appraiser appointed by China Commission on Artwork Authentication, whose grandfather was a major Chinese antique collector/dealer in early 1900s. (His bio, published in Journal of Authentication of Artworks, 2015, is available on request). Brought to California in 1960s. H.25.9 cm.

---



### 8007: A RARE LATE MING-EARLY QIN SKY BLUE JAR

USD 600 - 1,200

The drum-shape jar has thick-walls and is very heavy. A band of 13 conical protrusions decorates the shoulder and near the foot rim. The outer base is concave upward, with surface polished naturally by 400 years of aging. It is covered in large areas by Òkiln-redÓ formed by migration of trace iron from clay interior to the surface during drying and firing, resulting in oxidized iron on the surface with pale orange-red color. The pale sky blue glaze had lost most of the shine of newly fired porcelain due to about 400 year aging. This type cobalt-blue glaze was started in late Ming and became popular during Kangxi period of Qing. The interior surface has many horizontal ring of finger-width, leftover from potterÓs handwork, this type of interior features is common among Song/Yuan/Ming jars. More interestingly, the blue glaze has numerous dark colored crackle lines that form a fine network. These features distinguish this jar from most of blue glazed porcelain, and make it highly valuable. An animal head holding a ring in its mouth decorates the left and right sides. From Dr. Robert I-San Lin (#1582), 86-year old senior Chinese artwork appraiser appointed by China Commission on Artwork Authentication, whose grandfather was a major Chinese antique collector/dealer in early 1900s. (His bio, published in Journal of Authentication of Artworks, 2015, is available on request). Brought to California in 1960s. H. 20.6, dia. 23.0 cm; 2726 g.

---



### 8008: A VERY RARE SCHOLAR WATER POT, OF EARLY KANGXI

USD 500 - 700

It has a well formed, thick, and heavy body in the shape of ÒTai Bai ZwenÓ (???). Tai Bai Zwen is a unique shape started in early Kangxi as illustrated by this scholar water pot. The mottled red reflects the early Kangxi porcelain artists trying to make copper red glaze. This red glaze contains numerous crystallized red spot scattered among a grey ground. Such attempts eventually led to successful making of the Òpeach bloomÓ of mid/late Kangxi. The external base is covered by intensive Òkiln redÓ and has a central depress circle. These are features of some early Kangxi porcelain wares. Due to nearly 400 year of contact with the underlying surfaces, the outer base has been naturally ground smooth. The long aging has caused the glaze to lose the shine of newly fire porcelain. From Dr. Robert I-San Lin (#1891), 86-year old senior Chinese artwork appraiser appointed by China Commission on Artwork Authentication, whose grandfather was a major Chinese antique collector/dealer in early 1900s. (His bio, published in Journal of Authentication of Artworks, 2015, is available on request). Brought to California in 1960s. H.7.9, dia. 12.1 cm; 510 g.

---

## PRIVATE COLLECTION OF DR. LIN & OTHER ESTATES



### 8009: AN UNUSUAL MID MING BLUE AND WHITE BOWL

USD 600 - 800

It has a thin wall which is heavy for its size, very unusual for Ming period. The deep bowl with vertical wall, the aged greenish glaze that has lost surface shine, and the dark underglaze cobalt blue indicate that it was made during mid Ming, probably during late Jiaping (1522 -1566, A.D.). The motifs on the outer wall (children playing by a large bucket of water, the palm trees, the swirling clouds) and that on the inner bottom (2 officials greeting each other by tall bamboo tree, the entrance gate, the clouds/fog descending to the ground) were common during Jiaping and further indicate that this bowl was made during Jiaping. The intense dark cobalt blue is consistent with the dating. The outer base has a roughly written 'Fu' (good luck) mark. From Dr. Robert I-San Lin (#1894), 86-year old senior Chinese artwork appraiser appointed by China Commission on Artwork Authentication, whose grandfather was a major Chinese antique collector/dealer in early 1900s. (His bio, published in Journal of Authentication of Artworks, 2015, is available on request). Brought to California in 1960s. H. 6.3, dia. 10.7 cm; 158 g.



### 8010: A RARE AND GENUINE TANG SAN CAI PILLOW

USD 300 - 600

The head-resting plate rests on a well-sculptured and animated lion, unusual for Tang ceramics. The enamel/glaze has totally lost the shine of newly fired pottery with glaze. The blue is intense and iridescent when examined with side lighting. Numerous age-induced crackle lines with yellow impregnation can be seen. All these features are typical due to 1300 years of aging. Tang San Cai (???) wares have commanded high prices; as a result, numerous imitations have been made and sold. It is rather easy to distinguish a genuine one from a fake, based on glaze aging. The motif on the resting plate is a child playing among carps in a lotus pond; this is an auspicious emblem of Buddhism that was popular during mid Tang. From Dr. Robert I-San Lin (#2783), 86-year old senior Chinese artwork appraiser appointed by China Commission on Artwork Authentication, whose grandfather was a major Chinese antique collector/dealer in early 1900s. (His bio, published in Journal of Authentication of Artworks, 2015, is available on request). Brought to California in 1960s. 10.9 (H) x23.8 x 15.1 cm; 1381 g.



### 8011: A FINELY CARVED PENDANT WITH CRAB DESIGN

USD 200 - 400

This very heavy pendant is cleverly carved to depict a golden crab on a beautiful translucent white rock. The artist exploited different color and/or texture to carve so that the golden brown portion becomes a crab. This technique is called Chiau Se. The stone is very dense, with a waxy surface; it is white jade or a jade like stone. The pendant has a red silk ribbon with blue and yellow bands, and a golden color agate bead. In ancient China, huge pendants (sometimes weighing hundreds grams) were hang on the body to demonstrate ones rank and wealth. From Dr. Robert I-San Lin (#3620), 86-year old senior Chinese artwork appraiser appointed by China Commission on Artwork Authentication, whose grandfather was a major Chinese antique collector/dealer in early 1900s. (His bio, published in Journal of Authentication of Artworks, 2015, is available on request). 8.3 x 4.0 x 3.4 cm; 183 g.



### 8012: A RARE QING DYNASTY PORCELAIN SNUFF BOTTLE

USD 300 - 600

It has a porcelain body of very fine clay and a unctuous glaze, on which it is decorated with motifs common for Qianlong period, e.g., the ground of green meandering/intertwined branches, the musical jade 'Chin' (a piece of triangle shape flat jade that produce musical sound of various pitch when it is hanging and stricken. Chin also represents 'celebration' as the latter has the same pronunciation in Chinese.) The painting technique is typical for Qianlong, e.g., the 4 descending blue branches on the shoulder is painted with darker blue color around the edge and on the lower part of each leaf to yield a stereo feeling. The base has a well-written and typical Qianlong mark. The mouth rim and the cover have thick gold glaze, which is of the 'powder gold' type, not the 'water gold' type (chemical liquid gold compound) of late Qing. All these suggest that it may be a product of Qianlong. Due to over 200 years aging, the spoon has broken off from the cover and is lost. From Dr. Robert I-San Lin (#3623), 86-year old senior Chinese artwork appraiser appointed by China Commission on Artwork Authentication, whose grandfather was a major Chinese antique collector/dealer in early 1900s. (His bio, published in Journal of Authentication of Artworks, 2015, is available on request). Brought to California in 1960s. 6.3 (H) x 4.9 x 2.0 cm; 46 g.



### 8013: AN IMPERIAL GOLD AND RED CONICAL BOWL, OF GUANGXU

USD 800 - 1,600

This well-formed bowl has very fine pure white clay body, transparent glaze on the inside that show pure white color due to the white clay body, the combination of clay and glaze is very different from porcelains made before mid Qing, when glaze almost show greenish tint. The outer wall is covered by a pink gold-red glaze. The pale pink color indicates that it is made during late Qing when China was very poor and the gold-red glaze is deficient in gold. The very white and smooth tip of the foot rim without kiln-red indicates it is made close to modern days when such refined clay became available. The engraved motif of a ferocious open-mouth dragon gliding among clouds is typical for late Qing imperial wares. The genuine imperial mark in iron red is on the outer base confirming that is a Guangxu imperial ware. From Dr. Robert I-San Lin (#4248), 86-year old senior Chinese artwork appraiser appointed by China Commission on Artwork Authentication, whose grandfather was a major Chinese antique collector/dealer in early 1900s. (His bio, published in Journal of Authentication of Artworks, 2015, is available on request). Brought to California in 1960s. H. 4.6, dia. 10 cm; 95 g.

## PRIVATE COLLECTION OF DR. LIN & OTHER ESTATES



### 8014: A MAGNIFICENT CELADON JAR

USD 600 - 1,200

It has unctuous, crackled glaze, with Ming Dynasty Chenghua (??) mark. Although Chenghua is known to produce porcelain with unctuous glaze, its shape, with perfectly curved surface contour, resembles closely that of Kangxi jars of this size and its half-spherical cover is also typical of Kangxi jar covers. Since Kangxi potters are known to imitate Chenghua wares and to write Chenghua mark on porcelain; it is probably made during Kangxi. From Dr. Robert I-San Lin (#227), 86-year old senior Chinese artwork appraiser appointed by China Commission on Artwork Authentication, whose grandfather was a major Chinese antique collector/dealer in early 1900s. (His bio, published in Journal of Authentication of Artworks, 2015, is available on request). Brought to California in 1960s. H. 25.6, dia. 21.4 cm; 2405 g.



### 8015: QING ZHEE TANG WOOD BRUSH HOLDER

USD 1,000 - 2,000

This well-carved hardwood brush holder has 4 panels of engraved jade or jade-like stone, depicting the scenery of Qing Dynasty gardens of Yangzhou and Suzhou. One panel depicts the Suzhou garden with a circular gate leading to a rock garden, ponds and pavilions. The second depicts the strange rocks (Tai Fu Rock) with strange large holes on the fore ground and elegant pavilions on the far side across a stream/lake, with an up-curved bridge, a scene of the ÖSkinny West LakeÖ (???) of Yangzhou. The 3rd panel is similarly engraved, with a huge ÖTai Fu RockÖ and pavilions by the water, probably a scene of another Suzhou garden. The 4th panel depicts willow trees and a zigzag bridge leading to an open pavilion on the fore ground and a cruising boat on the far side of the water, a scene of Yang Zhou. From Dr. Robert I-San Lin (#4437), 86-year old senior Chinese artwork appraiser appointed by China Commission on Artwork Authentication, whose grandfather was a major Chinese antique collector/dealer in early 1900s. (His bio, published in Journal of Authentication of Artworks, 2015, is available on request). 14.4 (H) x 9.9 x 9.9 cm; 529 g.



### 8016: A RARE SILVER SEAL OF XU BEIHONG

USD 200 - 400

Size



### 8017: A METICULOUSLY SCULPTURED PLAYING TIGERS, ON BASE

USD 1,000 - 2,000

The jade or jade like stone is pale white and translucent, with waxy surface texture. The tigers are carved in details, showing the stripes on the skin, powerful neck and legs, open mouths bearing teeth, and the typical long hair on the belly. They look highly animated and ferocious. The dominant one puts one of his leg on the head of the other and another leg pressing the left leg of the weak one. A magnificent piece of artwork. The matching hardwood base is equally well sculptured to resemble a hardwood root-sculpture. Qing period. From Dr. Robert I-San Lin (#4862), 86-year old senior Chinese artwork appraiser appointed by China Commission on Artwork Authentication, whose grandfather was a major Chinese antique collector/dealer in early 1900s. (His bio, published in Journal of Authentication of Artworks, 2015, is available on request). Brought to California in 1960s. 20.2 x 12.0 x 5.9 cm (with base); 18.3 x 8.9 (H) x 3.5, 369 g (jade alone).



### 8018: A LARGE SCHOLAR'S BRUSH, WITH JADEITE HANDLE

USD 200 - 400

The jadeite or hard stone has excellent combination of bright green (?) and dull brownish-red (?) patches, mingling naturally. Under magnifying glass, it shows fine crystal/granular structures and cloudy/foggy patches (??), a feature of genuine natural jadeite. Where the green and brownish red colors are in close contact, each maintains its own color, indicating that the colored patches are not from artificially dyeing. The 4 words on the cover of the box Ö????Ö(sacred brush with jade handle) indicates that it probably was made for or belonged to the imperial household. From Dr. Robert I-San Lin (#5580), a senior Chinese artwork appraiser, whose grandfather was a major Chinese antique dealer in early 1900s. (Dr. LinÖs bio, in Journal of Authentication of Artworks, 2015, is available on request). Total length 30 cm, diameter 1.4 cm, weight 61 g.



## PRIVATE COLLECTION OF DR. LIN & OTHER ESTATES



### 8019: A VERY FINE GILT BRONZE STATUE, OF A BUDDHA

USD 9,000 - 18,000

This very fine Chinese Ming Dynasty gilt bronze depicts Shakyamuni Buddha, the Enlightened One, sitting solemnly in a style combining traditional Chinese Buddhist style with Tibetan style, which was popular during Ming. The Sage of the Shakyamuni Clan sits formally and crosses his legs(???), with eyes gaze forward and the hair in Ósnail-curlyÓ (??) piled on a???, with a single gold crown/bead adorning his head. His earlobes are long. His right arm and the hand extend across the knee in the earth touching mudra. The left arm performs the mudra of meditation with palm upward in the lap. His robe covering his body from left to right. A lower garment is tied at the waist. The most unusual of this statue are: (1) his gown and the throne are covered all over with dozens of meticulously sculpture human figures, vividly depicting the life of the Buddha in great detail, including his death while lying under the Buddhist tree; many animals, including elephant, and the 8-auspicious Buddhist symbols; (2) the lotus throne consisting upward and downward rows of lotus petals, with each petal having elaborate branch-like decoration; (3) the base cover-plate is welded to the main body without an open seam; (4) the statue is extremely heavy, even though, striking the base cover-plate yields a resonance indicating the statue is hollow without a filling material; thus the statue must have very thick walls. (5) the front base wall has 2 words engraved on it, reading from left to right ÔTai HeÓ (Great Harmony). Traditionally, Chinese language is written from right to the left but during Ming, some imperial Buddhist statues have marks written from left to right; these were made as gifts to high ranking Tibetan monks or rulers, or were designed or made by Tibetan artists. (Tibetan language is written from left to right.) Tai He refers to the palace of Tai He(???), the largest palace in the Forbidden City. These 2 words indicate that this statue was once belonged to the Palace. From Dr. Robert I-San Lin (#5835), a senior Chinese artwork appraiser, whose grandfather was a major Chinese antique dealer in early 1900s. (Dr. LinÓs bio, in Journal of Authentication of Artworks, 2015, is available on request). 43 x 35 x 23.4 cm; 12834 g (extremely heavy)



### 8020: AN EXQUISITE GILT SNUFF BOTTLE, OF QING DYNASTY

USD 400 - 800

It is very elaborately and delicately carved to depict scenes of ÔDream of the Red ChamberÓ (???), which was the most read novel of Qing Dynasty. All in great detail: a lady sits by porch of a pavilion; another tall and slender lady wearing long dragging gown strolls in a garden; pavilion roofs, window and doors are visible; a garden full of lavish flowering plants and trees; even the background is carved with diamond-shape units. It is amazing how so many things can be carved on a snuff bottle. A well-carved 4-word Qianlong mark is on the outer base, the writing style and carving workmanship are typical for Qianlong period. From Dr. Robert I-San Lin (#5967), a senior Chinese artwork appraiser, whose grandfather was a major Chinese antique dealer in early 1900s. (Dr. LinÓs bio, in Journal of Authentication of Artworks, 2015, is available on request). H. 7.7, width 3.6 cm, 27.6 g.



### 8021: A MAGNIFICENT MOON FLASK, WITH FRONT FACING DRAGON

USD 1,500 - 3,000

It has a very heavy body of fine clay and a smooth glaze with trace greenish tint. The workmanship and the material are almost perfect, except that there is a dent in glaze (1.5 mm dia.) on one side near the claw of the hind leg. From a major California collector. 33.0 x 27.6 x 16.8 cm; 2909 g.



### 8022: A BEAUTIFUL VASE, WITH UNDERGLAZE GREEN PAINTING

USD 500 - 1,000

The painting on this vase is a master piece of art and depicts view of mountains, waterfalls, a large lake, sail boats, water birds and flying birds in-formation, a bamboo hut, banana tree, broad-leaf weeds, flowering plant sprouting from rocks, and a sage walking on a plateau by the water. An animal head holding a ring is on the left and right sides. The outer base has a Daoguang mark in underglaze blue. The foot rim has light grayish color due to aging, contacting with materials beneath it. Porcelain painting with underglaze pigments (????, by being under the glaze, the painting is protected by the glaze) is far more difficult than on-glaze painting with color enamels, because in the former case, the pigment has to be brushed onto the surface of a semi-dried clay body. Then the porcelain is further dried, covered with glaze-water suspension, and finally fired at high temperature. The color after firing may deviated far from original color. Further, it is hard to brush-paint fine lines on the rough semi-dried clay surface. Thus, underglaze color painted porcelain is rare, mostly made during Kangxi period and is highly valued. From a major California collector. H 38.8 cm; 3366 g.



### 8023: PAIR OF 19TH C EUROPEAN GILTWOOD FRAMED MIRRORS

USD 500 - 800

Each mirror is of oval shaped, adorned with intricate details all over and flanked with three-branch candelabra under the mirror. H: 30 1/2 in.

## PRIVATE COLLECTION OF DR. LIN & OTHER ESTATES



### 8024: AN ORIGINAL FENDI STAINLESS STEEL WOMEN'S WATCH

USD 300 - 500

With a rectangular face, and stainless bracelet

---



### 8025: PAIR OF CHINESE BRONZE BUDDHIST TEMPLE CANDLESTICKS

USD 500 - 800

Of 18th century. Each has a splayed feet, with two handles in the mid-body. Flanked by a long neck with a flaring mouth; and two ring handles around the neck. H: 17 3/4 in.

---



### 8026: TIBETAN BRONZE FIGURE OF A BUDDHA

USD 800 - 1,200

Seated, and with details of an elaborate headpiece and robe.

---



### 8027: CHINESE MULTI COLOR ART DECO TALL TEAPOT

USD 100 - 150

Of bamboo design, in rectangular shape. Flanked by a C-shape handle and a spout.

---



### 8028: FINE CHINESE CARVED WOODEN BRUSH POT

USD 1,000 - 1,500

Deeply relief-carved with a figural scene around the body. H: 9 in. W: 7 3/4 in. Deep: 7 in.

---



### 8029: SET OF THREE CHINESE MAHOGANY DISPLAY CABINETS

USD 7,000 - 9,000

Each cabinet is raised on four sprayed legs; Flanked on top with a circular frame with shelves. With drawers and compartment on the bottom.

---



### 8030: A CHINESE MAHOGANY ALTAR TABLE

USD 500 - 700

With scrolling key fret carving apron. Size: H: 33 1/2 x L: 40 x W: 20in

---



### 8033: ANTIQUE CHINESE ROSEWOOD CABINET

USD 800 - 1,200

With two reticulated, hinged front doors that open up to shelves for storage. The reticulated front doors are decorated with panels of carved Chinese characters to read FuLuShou. H: 47 1/2 in. L: 30 in. W: 16 1/2 in.

---

## PRIVATE COLLECTION OF DR. LIN & OTHER ESTATES



### 8034: A SET OF OCCASIONAL ROSEWOOD TABLE AND FOUR CHAIRS

USD 1,500 - 2,500

With beautiful carvings on the backrests and aprons of the chairs, and with matching carving on all sides of the table fitted with marble top.

---



### 8035: ANTIQUE CHINESE MAHOGANY THREE-PIECE FOYER SET

USD 700 - 1,000

Comprising of two accent armchairs and an occasional table. H: 19 in. L: 17 in. W: 16 in.

---



### 8036: FINE ANTIQUE HUANGHUALI DAYBED, W/OCCASIONAL TABLE

USD 120,000 - 150,000

A daybed with single solid wooden footrest, and convertible to a two-seater loveseat completed with back cushions, throw pillows, and a small tea table.

---



### 8037: A BEAUTIFUL ANTIQUE CHINESE HUANGHUALI CABINET

USD 15,000 - 18,000

With two large doors, with carved panel on each. Inside has three shelves and two drawers in the middle. Size: H: 47 1/2in x L: 30in x W: 16 1/2in.

---



### 8039: ANTIQUE CHINESE RED MAHOGANY ALTAR TABLE

USD 1,000 - 2,000

Raised on four tall legs and with carving apron. H: 32 in. L: 40 in. W: 20 in.

---



### 8040: BRONZE FIGURAL STATUE, OF A NYMPH

USD 500 - 800

Modeled as a beautiful nymph in a flowing dressing, with hair tied up; with a marble plinth. Size: H: 28 in.

---



### 8041: CHINESE STONE BUST OF GUANYIN

USD 350 - 450

Carved in fine details, with a serene expression.

---



### 8042: 15TH CENTURY CARVED STONE BUDDHA HEAD

USD 300 - 400

A large statue with eyes closed in meditation. H: 9 1/2 in.

---



## PRIVATE COLLECTION OF DR. LIN & OTHER ESTATES



### 8043: CHINESE STONE INLAID BRONZE WINE VESSEL OF AN OX

USD 1,000 - 2,000

Modeled as an ox standing on its four legs. Decorated with taotie around the body. Flanked by a small ox as finial atop the cover. Opening in the front with a spout. H: 8 3/8 in.



### 8045: SET OF THREE CHINESE BRONZE FIGURES OF FU LU SHOU

USD 700 - 900

Each one in flowing robe standing upright holding respective symbols and amulets.



### 8047: MASSIVE SPINACH JADE COLORED HARD STONE GUANYIN

USD 3,000 - 5,000

Dressing in a flowing robe, pouring out holy water from a vase on one hand; with a child standing aside. H: 50 1/2 in.



### 8048: ANTIQUE LARGE CHINESE CARVED WOOD STANDING GUANYIN

USD 600 - 800

Carved of a slender form, she wears a flowing robe and has her right hand in Karana mudra. She holds prayer beads in her left hand and stands atop a lily pad base on a dragon's head. H: 36 in.



### 8049: BRONZE VESSEL WITH GOLD INLAID

USD 1,000 - 2,000

Gold inlays were found throughout the body and vase H: 22 5/8 in.



### 8050: CHINESE WOODEN ROUND STOOL WITH CLOISONNE TOP

USD 700 - 800

Raised on six curved legs. Decorated atop with an inserted round cloisonne medallion of twin fish in the center. Encircled by a band of blossoming lotuses with scrolling vines against a turquoise background. H: 13 1/2 in.



### 8051: A MAHOGANY GRANDFATHER CLOCK

USD 500 - 800

A tall, elegant, longcase clock with a metal dial with Roman numerals. H: 92 1/2 in. L: 18 3/4 in. W: 10 1/2 in.



### 8052: CHINESE GILTBRONZE FIGURE OF A HAPPY BUDDHA

USD 1,000 - 1,200

Wearing a loose robe and in a sitting position. H: 19 in. W: 26 in.

## PRIVATE COLLECTION OF DR. LIN & OTHER ESTATES



### 8053: CHINESE IMPERIAL YELLOW GLOBULAR VASE

USD 500 - 700

Finely painted with a dragon chasing a flaming pearl around the bulbous body. Flanked by a long, narrow neck. Six-character to read Qianlong on the bottom. H: 14 3/4 in.

---



### 8054: UNUSUAL CHINESE BLUE AND WHITE MOONFLASK

USD 500 - 700

Raised on a short, sprayed leg. Finely painted with an unusual design with geometric patterns around the body. Flanked by two handles on the shoulder. Six-character mark to read Xuande on the neck. H: 11 1/2 in.

---



### 8055: PAIR OF CHINESE POTTERY JARS

USD 600 - 800

Each is decorated with an ebonized panels in relief on the bulbous body; also flanked by two creature heads on the swelling shoulder. H: 14 in.

---



### 8056: CHINESE CARVED WHITE JADE BI

USD 350 - 450

Of mottled white and brown colors; carved with magnificent details with chilongs and scrolls.

---



### 8057: CHINESE CARVED WHITE AND BROWN JADE PENDANT

USD 200 - 300

In mottled white and brown colors; carved as a mystic creature with wings.

---



### 8058: UNUSUAL CHINESE CARVED HORN-LIKE SNUFF BOTTLE

USD 250 - 350

Magnificently carved in details of Chinese characters on both sides of the body; with a stopper.

---



### 8059: LARGE CHINESE CARVED JADE RING

USD 200 - 300

Of mottled white and brown colors; carved with textured pattern on the exterior.

---



### 8060: CHINESE DARK GREEN JADE PENDANT

USD 150 - 250

Of dark green colors; carved with symbols on both sides of the body.

---

## PRIVATE COLLECTION OF DR. LIN & OTHER ESTATES



### 8061: COLLECTION BOX OF FIVE CHINESE COINS

USD 350 - 450

Each coin is of a different value and each has a profile of Sun Yat-sen; whom was a Chinese statesman, physician, and political philosopher. He served as the first provisional president of Republic of China and the first leader of Kuomintang political party.

---



### 8062: GROUP OF TWO CHINESE ITEMS

USD 250 - 350

Comprising of an old Chinese coin and a round bi with gilt details.

---



### 8063: FINE CHINESE MULTICOLOR POTTERY VASE

USD 500 - 700

Finely painted with multicolor all over the vase, decorated with foo lions in low relief around the bulbous body. Flanked by two creature head on the swelling shoulder. H: 14 1/2 in.

---



### 8064: CHINESE LACQUERED TIERED TRAVELING BOX

USD 200 - 400

Flanked with a tall handle atop; with several tiers for storage. Beautifully painted on the exterior with gilt details of blossoming flowers. H: 15 3/4 in.

---



### 8065: CHINESE TIERED HEXAGONAL WOODEN BOX

USD 300 - 600

With a handle; inlaid with mother-of-pearl on the cover with a dragon. Each tiered box has a carved stone bi.

---



### 8066: CHINESE TIERED TRAVELLING BOX

USD 400 - 800

Flanked by a tall handle atop; with woven texture all over on the exterior. H: 16 in.

---



### 8067: PAIR OF MASSIVE CHINESE FAMILLE JAUNE VASES

USD 5,000 - 7,000

Very elaborately painted all over, the large key fret border rectangular panels on the body depicting two varying scenes of an emperor with his army and his court. The yellow ground densely filled with lotus flowers, insects, phoenixes, bats, and citron fruit. The shoulder with moulded chilong and the neck with two moulded foo lions and a ball. The neck with two smaller key fret border panels also depicting similar scenes of an emperor. The flared mouth with foliate rim. H: 48 1/2 in.

---

## PRIVATE COLLECTION OF DR. LIN & OTHER ESTATES



### 8068: CHINESE BLUE AND WHITE ROULEAU VASE

USD 500 - 800

Body painted with a landscape scene of a small house in the mountain. Pair of butterfly handles on the neck. H: 23 5/8 in.

---



### 8069: ANTIQUE CHINESE GLAZED PORCELAIN VASE

USD 500 - 800

Covered in a mottled brown glaze. Four-character mark to the base to read Yongzheng (of period). H: 16 1/2 in.

---



### 8070: CHINESE GREEN JADE BANGLE WITH CERTIFICATE

USD 300 - 500

Of mottled green and dark green colors.

---



### 8071: CHINESE GREEN JADE BANGLE WITH CERTIFICATE

USD 300 - 500

Of mottled green and dark green colors.

---



### 8078: CHINESE GREEN JADE BANGLE WITH CERTIFICATE

USD 300 - 500

Of mottled green and dark green colors.

---



### 8079: CHINESE GREEN JADE BANGLE WITH CERTIFICATE

USD 300 - 500

Of mottled green and white colors.

---



### 8080: CHINESE GREEN JADE BANGLE WITH CERTIFICATE

USD 300 - 500

Of mottled green and dark green colors.

---



### 8081: CHINESE GREEN JADE BANGLE WITH CERTIFICATE

USD 300 - 500

Of mottled green and dark green colors.

---

## PRIVATE COLLECTION OF DR. LIN & OTHER ESTATES



### 8082: CHINESE HARDWOOD MAHOGANY CABINET

USD 1,000 - 2,000

Beautifully made. Which opens to six equal open compartments and two drawers - three on each side, plus a pull-out drawer between the first and second shelves. Standing on four legs. H: 75 3/4 in. L: 39 3/4 in. W: 23 1/2 in.



### 8083: A FINE CHINESE HARDWOOD MAHOGANY CABINET

USD 1,000 - 2,000

Beautifully made. Which opens to six equal open compartments and two drawers - three on each side, plus a pull-out drawer between the first and second shelves. Standing on four legs. H: 77 in. L: 39 1/2 in. W: 23 1/2 in.



### 8084: A BEAUTIFUL FOUR-PANEL CARVED EBONIZED WOOD SCREEN

USD 800 - 1,000

The two middle panels stand taller than the outside panels; all of which have open work designs - with the each of the outside panels having two stacked octagonal designs, creating a visual highlight of the number 8 or infinity. Below the open work are rectangular carved panels of figures and landscapes. H: 75 3/4 in. L: 75 1/2 in.



### 8085: CHINESE MAHOGANY ROUND STAND WITH MARBLE TOP

USD 200 - 250

Size: H: 18 3/4 in.



### 8086: SMALL CHINESE MAHOGANY ALTAR TABLE

USD 300 - 400

Size: H: 14 1/2 in. L: 20 1/2 in. W: 6 3/4 in.



### 8087: CHINESE CARVED ROUND JADE BI

USD 350 - 450

Finely carved with a band of chilongs on the outer band. Of mottled white and brown colors.



### 8088: CHINESE CARVED WHITE JADE PENDANT

USD 150 - 250

Finely carved with a foo lion on one side; a monkey on top of an elephant on the other side of the body; of white color.



### 8089: CHINESE CARVED JADE OF A MYTHICAL CREATURE

USD 150 - 250

With a string of coins. Of green, white and lavender colors.



## PRIVATE COLLECTION OF DR. LIN & OTHER ESTATES



**8090: SMALL CHINESE CARVED JADE BRUSH WASHER**

USD 150 - 250

With design of fruits.

---



**8091: SMALL CHINESE CARVED JADE CEREMONIAL CUP**

USD 200 - 300

Flanked by a chilong.

---

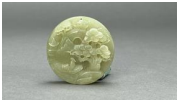


**8092: CHINESE DARK GREEN JADE PENDANT**

USD 150 - 250

With carved symbols on one side of the body.

---



**8093: BEAUTIFUL CHINESE CARVED JADE PENDANT**

USD 200 - 300

Finely carved with great details of a town scene, with blossoming trees.

---



**8095: FINE CHINESE CARVED JADE PENDANT**

USD 200 - 300

Finely carved with blossoming flowers.

---



**8097: CHINESE CARVED JADE PENDANT**

USD 150 - 250

Of greyish green color. Fine carved with chilong on one side and elephant on the other side.

---



**8098: CHINESE CARVED JADE OF WATER LILY**

USD 150 - 250

Of mottled green, white and lavender colors.

---



**8099: CHINESE CARVED WHITE JADE PENDANT OF A MOTH**

USD 150 - 250

Carved in magnificent details.

---

## PRIVATE COLLECTION OF DR. LIN & OTHER ESTATES



### 8100: CHINESE CARVED JADE OF A HORSE WITH A BIRD

USD 150 - 200

The bird is atop of the running horse.

---



### 8101: CHINESE CARVED JADE PENDANT

USD 200 - 300

Of mottled green color.

---



### 8102: LARGE CHINESE CARVED JADE RING

USD 250 - 350

Of mottled brown and grey colors; carved with textured pattern on the exterior.

---



### 8103: CHINESE CARVED WHITE JADE SNUFF BOTTLE

USD 200 - 300

Finely carved with a beautiful town scene on one side of the body; and a ruyi scepter with peach on the other side. With a stopper.

---



### 8104: CHINESE CARVED WHITE JADE SNUFF BOTTLE

USD 200 - 300

Intricately carved with a beautiful town scene on the body; with a stopper.

---



### 8105: CHINESE SHORT OAK ALTAR STAND

USD 500 - 800

Size: H: 16 in. L: 56 in. W: 18 1/8 in.

---



### 8106: CHINESE MAHOGANY WOODEN STAND WITH MARBLE TOP

USD 300 - 500

Size: H: 35 in. L: 12 3/4 in. W: 12 3/4 in.

---



### 8107: CHINESE SQUARE MAHOGANY CHAIR

USD 200 - 250

Size: H: 19 1/2 in. L: 18 1/4 in. W: 18 1/4 in.

---

## PRIVATE COLLECTION OF DR. LIN & OTHER ESTATES



### 8108: ANTIQUE CHINESE CARVED MAHOGANY STANDING PANEL

USD 1,000 - 2,000

Intricate. Openwork. With sturdy legs. H: 62 in. L: 23 1/2 in. W: 18 in.

---



### 8109: CHINESE CARVED GREEN JADE BEADED NECKLACE

USD 400 - 500

Each jade bead is carved with auspicious pattern.

---



### 8110: MAGNIFICENT CARVED CHINESE WOODEN BEADED NECKLACE

USD 450 - 550

Each carved wooden bead is finely carved of a luohan's head.

---



### 8111: FINE CARVED CHINESE AMBER BEADED NECKLACE

USD 400 - 500

Each bead is finely carved of a happy Buddha's face.

---



### 8113: MULTICOLOR GLASS BEADED NECKLACE

USD 150 - 250

Each glass bead is of different color and design.

---



### 8114: LARGE CHINESE AMBER BEADED NECKLACE

USD 350 - 450

Each bead is of beautiful, semi-translucent yellow color.

---



### 8115: CHINESE PINK PEKING GLASS SNUFF BOTTLE

USD 150 - 250

Finely carved with fishes on both sides of the body; with a stopper.

---



### 8117: GROUP OF THREE CHINESE JADE PENDANTS

USD 350 - 450

In different colors and shapes.

---

## PRIVATE COLLECTION OF DR. LIN & OTHER ESTATES



### 8119: CHINESE SQUARE MAHOGANY STAND

USD 200 - 300

Size. H: 29 in. L: 17 in. W: 16 3/4 in.

---



### 8125: BEAUTIFUL CHINESE CHARGER

USD 200 - 500

Painted with a landscape scene in the center.

---



### 8126: BRONZE FIGURE OF A ROARING TIGER

USD 200 - 400

Standing on all four legs on a base, the tiger with great details on its body and with a fierce expression on its face.

---



### 8127: MAHOGANY CHEST WITH DRAWERS

USD 200 - 300

With flowers and brass hardware. In verso marked "Brittany Heritage".H: 57 in. W: 26 1/2 in. Depth: 17 in.

---



### 8128: AMERICAN INLAID VENEERED SECRETARY BOOKCASE

USD 1,000 - 2,000

With three drawers- a shrine compartment inside.

---



### 8129: LARGE CHINESE SPINACH GREEN JADE FIGURE OF LUOHAN

USD 2,000 - 2,500

Wearing long robes and holding a mirror in right hand, rests upon base with carved quilted pattern. Lightly incised with a scattered leaf pattern. H: 40 in.

---



### 8130: GILDED FAMILLE ROSE HAND-PAINTED PORCELAIN VASE

USD 300 - 800

Six-character mark to read Tongzhi on the shoulder of the vase. Flanked by a foo lion on top of the lid as finial.H: 29 1/4 in. (74.3 cm)

---



### 8131: CHINESE FAMILLE ROSE VASE

USD 300 - 500

Beautifully painted with blossoming flowers around the vase. A double-ring mark on the bottom. H: 23 in.

---

## PRIVATE COLLECTION OF DR. LIN & OTHER ESTATES



**8132: ANTIQUE 18TH C. CHINESE CELADON CRACKLEWARE VASE**

USD 3,000 - 5,000

Of tall phoenix tail form, covered over all in dark green, crackle glaze. Beautifully decorated in low relief of blossoming flowers around the bulbous body. H: 24 1/2 in. (62 cm)



**8133: WOODEN AND BRONZE FIGURE OF A CHILD**

USD 200 - 500

Sitting on top of the wooden base covered with a rug and holding a mirror. H: 22 1/2 in. W: 22 1/2 in.



**8134: CHINESE BRONZE FIGURE OF A SEATED BUDDHA**

USD 500 - 800

With cracks around the figure.



**8135: FRENCH STAND WITH MARBLE-TOP AND MIRROR**

USD 300 - 500

With a reddish pink-veined marble-top, one lower and one upper shelf. A single drawer with an ormolu pull. Features a mirror, adorned with an oblong hand-painted plaque of depicts a group of nobles. Decorated all around with fine gilt details. H: 47 in. L: 22 in. W: 12 in. Property from an exclusive, private collector in Beverly Hills, California.



**8136: PAIR OF CHINESE CELADON CRACKLEWARE VASES**

USD 500 - 800

Each vase is raised on a short foot, with a heavy-bottom body. Flanked by a long neck with a lobed rim. H: 9 1/4 in.



**8137: PAIR OF JAPANESE CLOISONNE VASES**

USD 400 - 600

Each painted with a crane in a pond with blossoming flowers, with a beautiful sky blue background. Both are in perfect conditions. H: 7 1/4 in.



**8138: CHINESE RED GLAZE PORCELAIN STEM DISH**

USD 150 - 250

Raised on a tapering tall leg, with foliated rim. Six-character mark to read Qianlong on the bottom. H: 4 in. D: 7 1/2 in.



**8139: GROUP OF SIX CHINESE PORCELAIN FIGURES**

USD 300 - 500

Of different designs, as immortals and generals.



## PRIVATE COLLECTION OF DR. LIN & OTHER ESTATES



### 8141: JAPANESE CLOISONNE VASE WITH HEXAGONAL BODY

USD 200 - 300

The sides of the body with alternating panels of dragons and phoenixes. The dragons chasing a flaming pearl; the phoenixes with multicolor feathers. The top of the body with a scrolling floral pattern on a dark yellow background. H: 7 1/2 in.

---



### 8142: GERMAN LIDDED KETTLE

USD 100 - 200

Decorated on the body with a group of people in a restaurant setting. Carved marks on the bottom. H: 15 7/8 in.

---



### 8143: FINE JAPANESE CLOISONNE VASE

USD 200 - 250

In ovoid form, and with blooms and branches design in a cartouche.

---



### 8145: ELEGANT BLACK GLASS PERFUME BOTTLE AND DAUBER

USD 150 - 200

With a sleek bottle form and a tear drop cover that extends to function as a dauber.

---



### 8146: TWO EUROPEAN PORCELAIN VESSELS

USD 50 - 150

Each is beautifully painted with blossoming flowers against the ivory white ground. H: 12 in.

---



### 8147: PAIR OF GILDED CANDLESTICKS

USD 100 - 200

Each with moulded leaves around the body, standing on round splayed base

---



### 8148: CHINESE FAMILLE ROSE FIGURE OF FU XING

USD 200 - 300

One of the three star gods of ancient China, Fu Xing is the god symbolizing blessings and happiness.

---



### 8149: A BEAUTIFUL STERLING SILVER CENTERPIECE

USD 3,000 - 5,000

Finely chased two-handled oval centerpiece with a tray. H: 5 1/4 in. x L: 17 1/2 in. x W: 10 in.

---

## PRIVATE COLLECTION OF DR. LIN & OTHER ESTATES



**8150: CHINESE BRONZE STATUE OF A SEATED GUANYIN**

USD 500 - 800

Seated in a flowing gown on a double-lotus platform.

---



**8151: BRONZE STATUE OF BUDDHA - SOLD SEPARATELY**

USD 1,000 - 2,000

Standing atop of lotus pedestals, with left hands holding vessels. H: 19 1/2 in.

---



**8152: CHINESE BLUE AND WHITE GU VASE**

USD 250 - 350

Beautifully painted with blossoming flowers with scrolling vines all around the body, with a large flaring mouth.

---



**8153: JAPANESE BLUE AND WHITE CHARGER**

USD 100 - 200

With scene depicting solitary figure in a landscape, surrounded by trees, mountains and buildings. Orange cranes, sun and decorative accents. Diameter: 16 in.

---



**8154: CHINESE BRONZE BUST, OF A WARRIOR**

USD 5,000 - 8,000

With a headpiece, the face has fierce expression

---



**8155: CHINESE GARLIC HEAD VASE, MADE FOR PERSIAN MARKET**

USD 1,000 - 2,000

With Islamic design and flowers on raised background. H:15in.

---



**8156: CHINESE BLUE AND WHITE MEIPING VASE WITH COVER**

USD 500 - 800

Of slender form topped with a domed cover with finial. H: 16 in.

---



**8157: ANTIQUE CHINESE EARTHENWARE WELL-HEAD AND BUCKET**

USD 300 - 600

Possibly Han dynasty. The cylindrical body is flanked by an arched handle. H: 10 3/4 in.

---

## PRIVATE COLLECTION OF DR. LIN & OTHER ESTATES



**8158: ANTIQUE CHINESE BLUE AND WHITE JAR**

USD 250 - 450

Finely painted with a flying dragon and a phoenix around the body.



**8159: CHINESE PORCELAIN FIGURE OF GUAN YU**

USD 80 - 100

Stamped marks on the bottom.



**8160: CHINESE IRON RED & WHITE OCTAGONAL MEIPING VASE**

USD 500 - 800

Painted with a marine scene around the body.



**8161: CHINESE UNUSUAL BLUE AND WHITE STEM JAR**

USD 500 - 800

With a bulbous body, raised on a tall foot. Painted with a group of beauties around the body. A lot of fire ashes around the body. Mark to read Kangxi on the bottom. H: 7 in.



**8162: TRIPOD BRONZE CENSER**

USD 600 - 800

Two rectangular handles attached on the mouth, and with lobed bulbous body standing on three tall legs. Size:



**8163: CHINESE FAMILLE ROSE VASE**

USD 300 - 500

Raised on a splayed foot, beautifully painted with warriors around the body as well as on the neck. Six-character mark to read Daoguang on the bottom. H: 16 3/4 in.



**8164: ANTIQUE CHINESE IRON RED AND BLUE PORCELAIN VASE**

USD 200 - 400

The bottom-heavy body is painted by scrolling leaves and peonies. Flanked by two creature head with rings on the neck . H: 12 1/2 in.



**8165: ANTIQUE CHINESE PORCELAIN FIGURAL LIDDED TUREEN**

USD 300 - 500

The body and the cover is painted by a figural scene; with an inscription on the back of the body.

## PRIVATE COLLECTION OF DR. LIN & OTHER ESTATES



### 8166: CHINESE FAMILLE ROSE BRUSHPOT

USD 250 - 350

Beautifully painted with still life around the body, with a gilded rim. Factory mark on the bottom.

---



### 8167: CHINESE CELADON JAR, WITH BLUE MARK ON THE BASE

USD 150 - 350

With beautiful floral and scrolling leaves motif around the body. Six-character to read Qianlong on the bottom. H: 10 in.

---



### 8168: CHINESE BLUE AND WHITE SQUARE VASE

USD 200 - 300

Beautifully painted with repeating floral motif all around the vase. Flanked by elephant heads on the neck as handles. English marks on bottom. H: 10 1/2 in.

---



### 8169: PAIR OF CHINESE HAND CARVED VASES

USD 150 - 500

Highly detailed hand carved auspicious symbols to body and neck. With two side panels depicting moulded vases and flowers with abalone detail. Key fret pattern to flared lip, base and neck. H: 12 1/4 in.

---



### 8170: CHINESE ENAMELED GLOBULAR VASE

USD 500 - 800

With a bulbous body and a flaring mouth. Flanked by two creature heads on the shoulder as handles. Beautifully painted with figural scenes around the body. H: 14 3/4 in.

---



### 8171: CHINESE CELADON LIDDED JAR

USD 300 - 500

Six-character mark to read Qianlong on bottom. H: 13 7/8 in.

---



### 8172: CHINESE IRON RED AND WHITE GARLICHEAD VASE

USD 200 - 300

Painted with a figural scene around the body.

---



### 8173: CHINESE BLUE AND WHITE MOON FLASK

USD 800 - 1,200

With meandering tendrils and blooms motif. Signature around the rim.

---

## PRIVATE COLLECTION OF DR. LIN & OTHER ESTATES



### 8175: LOUIS XV STYLE GILT-METAL MOUNTED OAK BUREAU

USD 200 - 300

The drop-front writing surface opening to a fitted interior with a hidden compartment; Provenance: The Estate of Joan Benny, Beverly Hills. L: 25 1/2 in. H: 36 in. Depth: 18 in.



### 8176: PAIR OF SILVER PLATED CANDLE HOLDERS

USD 100 - 200

With foliate designs decorating each register. Leaves cast around the base. H: 12 in.



### 8177: PAIR OF CHINESE CELADON CANDLEHOLDERS

USD 300 - 500

Both are in shaped of recumbent shishi. H: 3 3/4 in. L: 5 1/2 in.



### 8178: PAIR CARVED STONE CHILONGS

USD 700 - 900

Of grey and brown colors; modeled as two chilongs with four legs and tail, with a roaring stance.



### 8180: SILVER-PLATED BOX WITH HINGED COVER

USD 200 - 300

Raised on a base, finely decorated all around the body. Mark on the bottom. H: 6 5/8 in.



### 8181: THAI BRONZE HEAD OF BUDDHA

USD 200 - 500

Wearing a diadem with a medallion in the center. H: 16 1/4 in. (41cm)



### 8182: CHINESE FAMILLE ROSE VASE WITH TWO HANDLES

USD 350 - 700

Festive figural painting on white ground below a diaper of enamel border on the neck. Raised leopard head biting on a red ring on each side. H : 15 1/4 in.



### 8183: PAIR OF BRONZE CANDLESTICKS LUSTERS

USD 200 - 500

Each is raised on a square, white marble plinth. Seated on top with a detailed, gilt bronze figural group of a boy and a girl, against a leafy background. Flanked by an extended column with a single sconce on top; adorned with a gilt bronze band with crystal drops. H: 16 in.



## PRIVATE COLLECTION OF DR. LIN & OTHER ESTATES



### 8184: CHINESE BLUE AND WHITE PHOENIX TAIL VASE

USD 100 - 200

Designed with landscape in cartouche panels. H: 12 1/4 in.

---



### 8185: A CUT GLASS VASE, AND A DRINKING GLASS

USD 200 - 300

Of one narrow neck vase, and one drinking glass.

---



### 8186: CHINESE CELADON FIGURE, OF A BUDDHA

USD 100 - 500

Moulded figure in a robe, and body adorned with strings and prayer beads, on a plinth. H: 11 in.

---



### 8187: ANTIQUE CHINESE WOODEN BOX WITH HINGED COVER

USD 100 - 200

H: 7 in. L: 17 1/2 in. W: 9 1/8 in.

---



### 8188: CHINESE WOODEN CHEST

USD 100 - 200

With hinged cover. H: 5 1/2 in. L: 12 in. W: 7 1/2 in.

---



### 8189: JAPANESE BLACK LACQUER AND GILT BOX

USD 50 - 100

With delicate leaves and flowers painted to the exterior. L: 14 1/2 in. (37cm) x W: 11 1/2 in. (29cm) x H: 3 5/8 in. (9cm)

---



### 8190: ENGLISH INLAID WOODEN BOX WRITING CASKET

USD 150 - 200

Of rectangular form, the hinged top opening to reveal a secret compartment with folded leather top and smaller compartments for writing implements. H: 7 in. W: 15 3/4 in. Depth: 10 in.

---



### 8191: UNUSUAL PORCELAIN FIGURE OF A MAN

USD 50 - 100

Hugging a tree trunk and playing golf.

---

## PRIVATE COLLECTION OF DR. LIN & OTHER ESTATES



**8192: LARGE CHINESE GU VASE**

USD 800 - 1,000

Painted with figural scene around the flared neck. With six-character mark on bottom to read Guangxu. H: 14 1/8 in.

---



**8193: CHINESE FAMILLE ROSE VASE**

USD 200 - 500

Beautifully painted with cranes around the body and blossoming flowers around the neck under a flared rim. Mark to read Daoguang on the bottom.

---



**8194: CHINESE MING BLUE AND WHITE BOWL**

USD 800 - 1,200

With figural pattern depicting of soldiers on horses in the forest approaching a palace gate. Inside of the bowl has a man perched on a tree. Four-character mark on the base. H: 6 1/2 in. D: 10 3/4 in.

---



**8195: CHINESE PORCELAIN VASE, REPUBLIC PERIOD**

USD 200 - 500

Mostly in famille verte; depicting a picturesque scene of the palace grounds, with court yard filled with lush greens and scenic mountainous landscape behind the palace. Orange wings attached as handles on the neck of the vase. Squared stamp in iron red on the base. H: 16 1/2 in.

---



**8196: LARGE CHINESE PORCELAIN VASE**

USD 400 - 800

Decorated around the body with different panels of landscape and figural motifs. Six-character mark to read Qianlong on the bottom. H: 20 in.

---



**8197: 19TH CENTURY CHINESE LIDDED FAMILLE ROSE JAR**

USD 100 - 200

Finely painted with a figure scene around the body. H: 12 3/4 in.

---



**8198: PAIR OF CHINESE PAINTED PORCELAIN FIGURES**

USD 50 - 100

Modeled as a man and a woman, dressing in dark green robe-like clothing with hats. H: 14 1/2 in.

---



**8199: TALL CYLINDRICAL CERAMIC BRUSH POT**

USD 50 - 100

Painted with butterflies throughout. H: 9 in.

---

## PRIVATE COLLECTION OF DR. LIN & OTHER ESTATES



### 8200: PAIR OF JAPANESE PEARL EARRINGS

USD 200 - 300

Mounted in 14K gold.



### 8201: 14K GOLD RING WITH TWO PEARLS

USD 500 - 700

Of crossover design, centering a pair of pearls. Mounted in 14K gold.



### 8202: 14K GOLD RING WITH BURMESE JADE

USD 1,000 - 1,200

Centering an oval shaped apple green jade, mounted in 14K gold.



### 8203: 14K GOLD RING WITH BURMESE JADE

USD 1,000 - 1,200

Centering an oval shaped green jade, mounted in 14K gold.



### 8204: CHINESE JADEITE PENDANT WITH 14K GOLD

USD 1,200 - 1,500

The translucent jadeite carved as a girl holding peach.



### 8206: GOLD NECKLACE WITH BLACK PEARL

USD 150 - 300

Pearl: 8.8mm



### 8207: TWO RUBBER CORD NECKLACES

USD 100 - 200

Rubber necklaces.



### 8208: BLACK PEARL NECKLACE

USD 200 - 300

With white gold chain.

## PRIVATE COLLECTION OF DR. LIN & OTHER ESTATES



### 8209: HEART SHAPED JADEITE AND 14K GOLD PENDANT

USD 200 - 300

Of heart shape apple green jadeite pendant with 14K gold surmount.

---



### 8212: 14K WHITE GOLD, PEARL AND DIAMOND RING

USD 400 - 500

Centering a pearl with diamonds on the side. Mounted in 14K white gold.

---



### 8213: PEARL BROOCH WITH 14K GOLD

USD 500 - 700

Of 15 pearls circled together mounted in 14K gold.

---



### 8214: PAIR OF JAPANESE PEARL AND DIAMOND EARRINGS

USD 300 - 500

Mounted in 14K gold.

---



### 8215: 14K GOLD RING WITH PEARL AND DIAMOND

USD 500 - 700

0.2ct

---



### 8216: 14K GOLD NECKLACE WITH PEARL

USD 300 - 500

Pearl: 16mm

---



### 8217: 14K GOLD RING WITH PEARL

USD 700 - 900

Features a pearl with 14K gold band.

---



### 8218: PAIR OF 14K GOLD AND JAPANESE PEARL EARRINGS

USD 400 - 500

Double pearl design. Mounted in 14K gold.

---

## PRIVATE COLLECTION OF DR. LIN & OTHER ESTATES



### 8219: 14K GOLD AND BURMESE JADE RING

USD 2,000 - 3,000

Centering an oval-shaped jade.

---



### 8220: 14K GOLD RING WITH PEARL AND DIAMOND

USD 500 - 700

Centering a pearl, flanked by diamonds. 0.10ct

---



### 8221: 14K GOLD AND CHINESE GREEN JADE RING

USD 1,000 - 1,200

Centering an oval-shaped jade.

---



### 8222: 14K GOLD RING WITH PEARL AND DIAMOND

USD 400 - 600

Features a pearl and diamonds with 14K gold band. 0.12ct

---



### 8224: 14K GOLD AND GREEN JADE BROOCH

USD 300 - 400

Of sailboat design.

---



### 8225: CHERRY SHAPED 14K GOLD BROOCH

USD 600 - 800

Designed as cherry.

---



### 8226: BEAUTIFUL JAPANESE SATSUMA VASE

USD 250 - 350

Beautifully decorated with one cameo of two ladies of drying flowers, and another cameo of a monkey perching on a tree branch under moonlight. H: 4 3/4 in.

---



### 8227: JAPANESE SATSUMA HEXAGONAL BRUSHPOT

USD 200 - 300

Decorated with various characters all around the body. H: 6 cm.

---



## PRIVATE COLLECTION OF DR. LIN & OTHER ESTATES



### 8228: JAPANESE SATSUMA VASE

USD 300 - 500

Finely painted with two cameos of children playing against a colorful background with blossoming flowers. Mark on the bottom. H: 2 3/8 in. (6 cm)

---



### 8229: CHINESE CANTON VASE

USD 200 - 400

Beautifully painted with blossoming flowers, a singing bird and a butterfly on the body as well as on the long neck. H: 9 cm. H: 3 1/2 in.

---



### 8230: MAGNIFICENT JAPANESE SATSUMA BOWL

USD 1,000 - 1,500

Raised on a short foot, beautifully decorated on the outside with blossoming flowers and a butterfly. The center of the bowl is magnificently painted with a panel of figural scenes with beauties, encircled by a band of flowers. Mark on the bottom. H: 4 1/2 cm D: 12 1/2 cm

---



### 8231: HEART SHAPED AMBER NECKLACE

USD 100 - 250

Mounted in silver.

---



### 8233: VINTAGE 18K CARTIER-STYLE LOVE BANGLE

USD 2,500 - 3,500

Size:18

---



### 8234: OBSIDIAN AMULET PENDANT

USD 500 - 800

Carved with dragon. Surrounded by Zircons.

---



### 8236: CHINESE SCROLL OF A BAMBOO TREE

USD 300 - 500

With inscription on top right.

---



### 8237: SET OF TWO JAPANESE SCROLLS

USD 500 - 700

With calligraphy of manual instructions. L: 110 in., L: 80in.

---

## PRIVATE COLLECTION OF DR. LIN & OTHER ESTATES



### 8239: SMALL CHINESE CARVED MAHOGANY CHAIR W/ MARBLE TOP

USD 150 - 300

With a mottled pink marble top. H: 15 in. Diameter: 13 3/4 in.

---



### 8240: FRENCH SHOW CABINET

USD 500 - 800

Size:

---



### 8241: FINE JAPANESE SATSUMA FIGURAL VASE

USD 300 - 600

Raised on a short foot with a bulbous shoulder, decorated all around with Japanese figures on the body. Mark on the bottom. H: 7 1/2 cm. H: 3 in.

---



### 8242: A YELLOW SHOUSHAN TALISMAN, OF A FOO DOG

USD 500 - 800

In the form of a playful foo dog. Size: H: 2 1/4 in. L: 4 in.

---



### 8243: INDIAN PAINTING ON STAMP PAPER

USD 500 - 800

On Jeypoor state stamp paper depicting Krishna playing flute for gopis and a peacock. With a Jaipur government postage stamp. H: 13 1/2 in., L: 8 3/4 in.

---



### 8244: PAIR OF CHINESE HAND-PAINTED ART ON PAPER

USD 600 - 800

Of scholars, sitting in chair. H: 16 1/4 in., L: 10 1/2 in.

---



### 8245: EARLY QING CHINESE PAINTING OF LOVERS ON PAPER

USD 300 - 500

Depicting two Chinese lovers standing on the balcony. Early Qing Dynasty. L: 22 1/2 in., H: 13 in.

---



### 8246: QING DYNASTY CHINESE PAINTING ON PAPER

USD 200 - 300

Vividly painted in radiant colors, depicting a courting gentleman greeting the princess in an elegantly decorated room. H: 16 in., L: 12 1/2 in.

---

## PRIVATE COLLECTION OF DR. LIN & OTHER ESTATES



### 8247: QING DYNASTY CHINESE PAINTING OF BEAUTIES ON SILK

USD 200 - 800

Qing Period. Painted in radiant colors of a group of beauties dressing in flowing robes playing pitch-pot in a garden scene L: 21 in., H: 12 1/2 in.

---



### 8248: CHINESE PAINTING OF A BEAUTY ON PAPER.

USD 100 - 500

Sitting in a tent in a garden. With calligraphy on the side. Qing Dynasty. H: 18 in., L: 12 in.

---



### 8249: CHINESE PAINTING OF A LANDSCAPE

USD 500 - 800

Signature to read Hong Fu. H: 15 5/8 in., L: 11 in.

---



### 8250: CHINESE PAINTING ON SILK OF A BEAUTY READING

USD 200 - 700

Qing Period With calligraphy on the side. L: 13 3/4 in., H: 9 3/4 in.

---



### 8251: PAIR OF CHINESE PAINTINGS OF BEAUTIES ON HORSES

USD 800 - 1,000

Four Chinese beauties are riding horses, walking in the field. H: 13 in., L: 12 in.

---



### 8252: CHINESE PAINTING OF A BEAUTY ON PAPER

USD 500 - 700

A Chinese beauty is holding a book, wearing a traditional Han dressing. Early Qing Dynasty. H: 12 1/2 in., L: 10 in.

---



### 8253: ANTIQUE INDIAN PAINTING ON STAMP PAPER

USD 300 - 500

H: 13 1/2 in. L: 9 1/8 in.

---



### 8254: THREE CHINESE WATERCOLOUR PAINTINGS

USD 300 - 500

With floral motifs. Calligraphy on the side. H:11 in. x W: 9 in.

---

## PRIVATE COLLECTION OF DR. LIN & OTHER ESTATES



### 8255: JAPANESE PAMPHLET WITH PAINTING OF TWO BEAUTIES

USD 100 - 200

From The Central Raw Silk Association of Japan. H: 10 5/8 in. W: 5 3/4 in.

---



### 8256: ANTIQUE INDIAN PAINTING ON STAMP PAPER

USD 500 - 1,000

H: 13 1/4 in. L: 8 5/8 in.

---



### 8257: ANTIQUE INDIAN PAINTING OF RAMA ON STAMP PAPER

USD 500 - 800

Painted Rama in a standing position with gilt painted details to his bow and his garb. On a twenty rupees note stamp paper with a Mewar Udaipur one anna court fee stamp. H: 13 3/4 in., L: 9 in.

---



### 8258: ANTIQUE INDIAN PAINTING ON STAMP PAPER

USD 500 - 1,000

H: 13 1/2 in. L: 8 5/8 in.

---



### 8259: CHINESE PAINTING OF PIGEONS ON PAPER

USD 500 - 800

Of a colorful palette, depicting three birds on a rooftop and a beautifully painted gradient sky in the background. H: 13 1/4 in., L: 20 in.

---



### 8260: CHINESE PAINTING OF A BIRD ON PAPER

USD 200 - 300

Early Qing Period. Of a blue jay gazing up and perched on a delicate prunus tree branch. H: 13 1/4 in., L: 15 1/4 in.

---



### 8261: TWO 19TH CENTURY CHINESE PAINTINGS OF A BEAUTIES

USD 300 - 500

One of a beauty on a boat with auspicious items and a crane at the front. The other depicting three beauties standing outside of a pagoda. Early Qing Dynasty. H: 15 1/2 in., L: 10 1/2 in.

---



### 8262: CHINESE PAINTING ON SILK OF WOMEN IN A GARDEN

USD 800 - 1,000

CHING DYNASTY. Depicting two roaming peacocks and five beauties tending to a garden of flowers. H: 13 1/4 in., L: 20 3/4 in.

---

## PRIVATE COLLECTION OF DR. LIN & OTHER ESTATES



**8263: RAYMOND R. PICARD, CANADIAN (1925 - 2009)**

USD 400 - 800

An oil painting that depicts a gentleman fishing in a flowing stream. Signed on bottom right to read R. Picard, numbered 5/49.L: 12 in. H: 16 in.

---



**8264: DRAWING OF A MAN'S PORTRAIT**

USD 50 - 100

Signed on bottom to read C. Cagnon.W: 6 in. H: 8 in.

---



**8265: DORUS ARTS, DUTCH (1901 - 1961)**

USD 300 - 500

Charcoal painting on paper of landscape scene. Sign on bottom right to read Dorus Arts.Dorus Arts (1901 - 1961) was a Dutch painter and he took lessons at the studios of Gorter, Jan Toorop, Van Vucht Tijssen, and Jurrens. With these masters, he perfected his talent for drawing, etching and painting. The record sold price in auction is USD \$1,651 for his work -- Waterlilies in a Forest Pond, which was sold at Christie's Amsterdam in 2004.L: 10 in. H: 7 in.

---



**8266: PAINTING ON PAPER OF A STUNT WOMAN**

USD 100 - 200

Depicts a naked stunt woman performing with her bicycle on a tightrope, with fire beneath her. Signed on top left.L: 6 3/4 in. H: 8 1/2 in.

---



**8267: LITHOGRAPH OF ROYAL FAMILIES**

USD 200 - 300

With multiple portraits around the border and panels of the royal estates as well as a gathering scene.W: 12 in. H: 16 in.

---



**8268: LIONEL FIELDING DOWNES, CANADIAN (1900 - 1972)**

USD 400 - 700

An oil painting of two naked ladies at a beach. Signature on bottom right to read L. Fielding Downes.Lionel Fielding Downes was a Canadian artist, known for paintings. The record sold price for this artist is USD \$1,025 for his work, "Rue Richelieu", which was sold in 2009.L: 20 in. H: 13 3/4 in.

---



**8269: DRAWING OF THREE DOGS**

USD 100 - 200

Drawing on paper of three dogs playing on a road. Not signed.L: 13 1/2 in. H: 9 1/4 in.

---

## PRIVATE COLLECTION OF DR. LIN & OTHER ESTATES



### 8270: DORUS ARTS, DUTCH (1901 -1961)

USD 700 - 900

Drawing on paper of two lumbers and a horse carriage. Signed on bottom right to read Dorus Arts. Dorus Arts (1901 - 1961) was a Dutch painter and he took lessons at the studios of Gorter, Jan Toorop, Van Vucht Tijssen, and Jurrens. With these masters, he perfected his talent for drawing, etching and painting. The record sold price in auction is USD \$1,651 for his work -- Waterlilies in a Forest Pond, which was sold at Christie's Amsterdam in 2004. W: 12 1/2 in. H: 9 in.

---



### 8271: A BEAUTIFUL LANDSCAPE DRAWING

USD 100 - 200

Depicts a man walking down a path with two goats to a village. Not signed.

---



### 8272: LITHOGRAPH OF ROYAL FAMILIES

USD 100 - 200

With multiple portraits around the border and panels of baptism scenes in the center. W: 12 in. H: 16 in.

---



### 8273: FRENCH LITHOGRAPH OF MOTHER OF JESUS

USD 100 - 200

L: 10 1/4 in. H: 17 in.

---



### 8274: WATERCOLOR PAINTING OF A WAR SCENE

USD 150 - 250

Resting and lying down in a cave near a beach with an abandoned canon, feeling helpless. Signed on bottom right which is illegible. L: 19 1/4 in. H: 14 1/4 in.

---



### 8275: WILLIAM SHOWELL, CANADIAN (1903 - 1984)

USD 200 - 300

Drawing on paper of a cowboy scene. Titled "The Violent Day". Signed on bottom right to read William Showell, dated 64. William Showell (1903 - 1984) was a Canadian painter, known for landscape, portrait and nude paintings. L: 15 1/2 in. H: 17 in.

---



### 8276: WATERCOLOR PAINTING OF A SUMMER SCENE

USD 300 - 500

A watercolor painting that depicts a coast scene wherein a group of people having fun with water activities. Not signed.

---

## PRIVATE COLLECTION OF DR. LIN & OTHER ESTATES



**8277: LIONEL FIELDING DOWNES, CANADIAN (1900 - 1972)**

USD 300 - 500

An oil painting that depicts a farming working on a field. Signed on bottom right to read Downes, dated 47. Lionel Fielding Downes was a Canadian artist, known for paintings. The record sold price for this artist is USD \$1,025 for his work, "Rue Richelieu", which was sold in 2009. H: 12 1/2 in L: 18 1/4 in.

---



**8278: LIONEL FIELDING DOWNES, CANADIAN (1900 - 1972)**

USD 300 - 500

An oil painting that depicts of indigenous people. Signed on bottom right to read L.F. Downes, dated 54. Lionel Fielding Downes was a Canadian artist, known for paintings. The record sold price for this artist is USD \$1,025 for his work, "Rue Richelieu", which was sold in 2009. H: 13 3/4 in. L: 19 1/4 in.

---



**8279: LIONEL FIELDING DOWNES, CANADIAN (1900 - 1972)**

USD 500 - 800

A painting on canvas that depicts a busy street scene. Titled "In t he Bowery NY City." Signed on bottom right to read L. Fielding Downes. Lionel Fielding Downes was a Canadian artist, known for paintings. The record sold price for this artist is USD \$1,025 for his work, "Rue Richelieu", which was sold in 2009. H: 18 1/4 in. L: 24 1/4 in.

---



**8280: LIONEL FIELDING DOWNES, CANADIAN (1900 - 1972)**

USD 200 - 300

A painting on paper of ferries/ Signed on bottom right to read F. Fielding Downes, dated 42. Lionel Fielding Downes was a Canadian artist, known for paintings. The record sold price for this artist is USD \$1,025 for his work, "Rue Richelieu", which was sold in 2009. H: 13 3/4 in. L: 19 3/4 in.

---



**8281: A FINE PLAQUE OF GODDESSES IN A PARLOR**

USD 2,000 - 3,000

Plaque within a beautiful giltwood frame. Impressed mark on the back. Lot is in perfect condition. With Frame: L: 22 in. H: 18 3/4 in. Without Frame (Plaque Only): L: 16 in. H: 12 in.

---



**8283: OIL ON CANVAS PRINT OF A SOCIAL GATHERING**

USD 600 - 800

Depicts a group of nobles socializing next to a piano. 36 in. (L) x 48 in. (W).

---



**8284: LARGE FRAMED OIL PAINTING OF A GARDEN & HOME**

USD 500 - 700

Depicting a small cottage amongst colorful blooming flowers. Signature on bottom left hand corner. H: 48 1/2 in. x L: 56 1/2 in.

---



## PRIVATE COLLECTION OF DR. LIN & OTHER ESTATES



**8285: 19TH C. RUBY RED BOHEMIAN GLASS PUNCH BOWL**

USD 300 - 800

H: 14 in.

---



**8286: CHINESE BLUE AND WHITE OVAL PLANTER, PHOENIX**

USD 500 - 700

With meandering tendrils on flared rim, over an openwork body. Base depicts of two dancing phoenixes. Six-character mark on the rim to read Xuande. H: 4 in. L: 11 in. W 9 1/2 in.

---



**8288: CHINESE WOODEN TRAVELING BOX**

USD 800 - 1,000

The two hinged doors and the hinged cover are inlaid with mother-of-pearl; opens up with drawers and carved stone and jade pendants inside.

---



**8289: A CHINESE WOODEN TRAVELLING BOX**

USD 350 - 550

Has three small rectangular drawers, and matching metal cabinet doors and handle. H: 6 3/4 in. L: 6 3/4 in. W: 4 3/4 in.

---



**8290: CHINESE MINT GREEN BOWL**

USD 300 - 400

Beautifully decorated on the exterior of floral motif. Inscription on the base to read Qianlong period. H: 2 1/2 in. D: 5 7/8 in.

---



**8291: A FINE CHINESE LOTUS BOWL**

USD 200 - 300

Of concave form, raised on a short leg. H: 2 3/4 in. D: 6 3/4 in.

---



**8292: CHINESE GREEN DEEP BOWL**

USD 300 - 400

Beautifully decorated on the exterior of floral motif. Inscription on the base to read Qianlong period. H: 2 1/2 in. D: 5 7/8 in.

---



**8293: CHINESE BLUE PORCELAIN PLATE**

USD 300 - 500

Centrally painted with a red dragon chasing a pearl amidst clouds, and surrounded equidistantly by large chrysanthemum blooms. Mark on the base to read Kangxi. D: 8 1/2 in.

---

## PRIVATE COLLECTION OF DR. LIN & OTHER ESTATES



### 8294: CHINESE CARVED WOODEN BOX WITH PENDANTS

USD 300 - 500

Flanked by a handle atop; the carved front cover opens up to two drawers and each has a carved stone pendant inside.

---



### 8295: CHINESE WOODEN BOX WITH CARVED JADE PENDANTS

USD 300 - 600

The cover is inlaid with mother-of-pearl; opens up with two carved white jade pendants inside.

---



### 8296: A CHINESE BRACELET

USD 150 - 200

Strung and intricately carved rectangular pieces, and with a round clasp. L: 37 1/2 in.

---



### 8297: A SPINACH JADE RUYI SCEPTER

USD 150 - 300

L: 5 1/2 in.

---



### 8298: ANTIQUE CHINESE FIGURAL PORCELAIN JAR

USD 200 - 300

Finely painted with a figural scene around the body. Six-character on the shoulder to read Jiajing.

---



### 8299: GERMAN MUSIC BOX WITH WINE GLASSES

USD 200 - 250

H: 10 1/2 in. W: 4 1/4 in. L: 8 in.

---



### 8300: IRON RED CHINESE BOWL, SQUARED SEAL ON THE BASE

USD 150 - 200

Decorated with three alternating gold fish and shrub in the interior, and several symbols against a pattern of red scrolls. H: 2 1/4 in. D: 4 3/4 in.

---



### 8301: ANTIQUE CHINESE FAMILLE ROSE ROOSTER PLATE

USD 300 - 400

Magnificently painted in the center of roosters amongst garden rocks and blossoming flowers. Mark on the bottom. D: 8 3/4 in.

---

## PRIVATE COLLECTION OF DR. LIN & OTHER ESTATES



### 8303: CHINESE SANG DE BOEUF VASE

USD 300 - 400

Raised on a splayed foot, with a flaring mouth. Flanked by two tubes on the neck as handles. H: 15 in.

---



### 8304: CHINESE ENAMELED MILLE FLEUR VASE

USD 300 - 500

Beautifully painted with enamel of blossoming flowers all around the vase, against a black background. H: 18 in.

---



### 8305: CHINESE BROWN GLAZED POTTERY VASE

USD 300 - 500

Covered in mottled, dark brown glaze all over. The bulbous shoulder is flanked by raised designs. With a long neck and a flared rim. H: 9 1/2 in.

---



### 8306: CHINESE BLUE AND WHITE DRUM SHAPE GRINDER

USD 200 - 300

With poem around the body. H: 7 1/4 in.

---



### 8307: TALL CHINESE TEMPLE JAR WITH LID

USD 500 - 800

Beautifully painted with floral blossoms and scrolling leaves all around the body. Six-character mark to read Kangxi on the bottom. H: 19 1/4 in.

---



### 8308: CHINESE CRACKLEWARE CELADON CANDLE HOLDER

USD 200 - 300

The hexagonal cup with an overlapping lotus leaves around the bottom seats on a round plinth on a bell-shaped base with matching overlapping lotus leaves design.

---



### 8309: ANTIQUE JAPANESE NABESHIMA WARE PLATE

USD 400 - 600

Beautifully painted with various types of vegetables on the plate. Mark of Nabeshima on the bottom of the plate. Diameter: 8 1/2 in.

---



### 8310: CHINESE JUNYAO DISH

USD 200 - 300

L: 5 1/2 in. H: 1 3/4 in.

---

## PRIVATE COLLECTION OF DR. LIN & OTHER ESTATES



### 8311: CHINESE BRONZE FIGURE OF A SEATED BUDDHA

USD 500 - 800

Seated on a double lotus stand.

---



### 8312: PAIR OF CHINESE FIGURAL BRONZES

USD 200 - 300

Pair of antique Chinese bronze standing girl and boy with gilded dress

---



### 8313: ELABORATE CHINESE BRONZE INCENSE BOX AND COVER

USD 800 - 1,200

Etched with various design all over its body, with tall wilted petal handles. Size: H: 11 1/2 in. L: 14 in W: 5 in.

---



### 8314: CHINESE CELADON TRIPOD CENSER

USD 500 - 800

With bulbous-shaped body, and a cover of Japanese silver openwork design of meandering tendrils. Size: H: 5 in.

---



### 8315: ANTIQUE SMALL CHINESE BLUE & WHITE CEREMONIAL CUP

USD 300 - 500

Hand-painted with a garden scene, with poem writing around the body. On a wooden stand. With the original purchase sticker on the bottom from Warren Imports. H: 2 1/2 in. D: 3 1/8 in. Part of the collection of Mrs. Daisy Lintilhac

---



### 8316: 19TH CENTURY CHINESE BLUE AND WHITE GRAVY BOAT

USD 300 - 500

Painted on the exterior with blooming flowers, and flanked by a handle. H: 3 1/4 in. L: 9 1/4 in. Part of the collection of Mrs. Daisy Lintilhac

---



### 8317: A CHINESE CEREMONIAL CUP, WITH A BOX

USD 300 - 500

Size. H: 2 1/2 in. D: 5 in.

---



### 8319: A PAIR OF SEMI CONICAL CEREMONIAL CUPS

USD 300 - 400

Comes with a box H: 1 3/4 in. D: 3 3/4 in.

---

## PRIVATE COLLECTION OF DR. LIN & OTHER ESTATES



### 8320: TIBETAN BRONZE FIGURE OF A SEATED BUDDHA

USD 300 - 500

Dressing in a loose robe, sitting atop of a lotus pedestal.

---



### 8322: CHINESE SHANG DYNASTY-STYLE BRONZE BELL, WITH BOX

USD 800 - 1,200

Made from a hand-carved mold of various characters and inscriptions. Size: H: 10 3/4 in.

---



### 8323: A SET OF TWO CEREMONIAL WINE CUPS

USD 200 - 300

Size: H: 1 3/4 in. D: 3 7/8 in.

---



### 8324: PAIR OF FIGURES OF BOYS SEATED ON BUFFALOS

USD 1,000 - 1,500

Of two boys riding buffalos. Mark to read Qianlong at the back.

---



### 8325: CHINESE HAND-PAINTED FLORAL DISH, WITH BOX

USD 300 - 500

Size: H: 2 1/4 in. D: 10 in.

---



### 8326: SET OF THREE SMALL IMARI SHALLOW BOWLS

USD 50 - 100

With medallions painted in the center roundel and geometric design on exterior. D: 4 1/2 in.

---



### 8327: A SET OF THREE JAPANESE ART WORKS

USD 1,000 - 2,000

Depicting of people and an overview of a busy community. With pencil markings. H: 14 1/2 in. L: 10 in.

---



### 8328: SILVER-PLATED FOOTED EWER

USD 100 - 200

H: 10 in.

---

## PRIVATE COLLECTION OF DR. LIN & OTHER ESTATES



### 8329: UNUSUAL GLASS CANDELABRA

USD 300 - 350

Sitting atop a plinth, with two up-swept arms.

---



### 8330: BEAUTIFUL COBALT BLUE GLASS VASE

USD 300 - 600

Beautifully painted with blooming flowers and adorned with gilt details. H: 12 1/2 in.

---



### 8331: OIL ON CANVAS PAINTING OF A PATIO

USD 150 - 250

Oil on canvas painting. Depicts a patio scene, overlooking a luxurious garden full with blooming flowers. Signed on the right. L: 12 in. H: 16 in.

---



### 8332: OIL ON CANVAS PAINTING OF A COASTAL SCENE

USD 150 - 250

Oil on canvas painting. Depicts a beautiful coastal scene with boats. Signed on lower right which is illegible. L: 16 in. H: 12 in.

---



### 8333: JOYCE ROYBAL, BRITISH (1955 - )

USD 150 - 250

Oil on canvas painting that depicts three kids riding bicycles. Signed on lower right to read J. Roybal. Joyce Roybal is known for her cartoonish, whimsical child genre painting. The record sold price in auction for this artist is USD \$600 which was sold in 2018. L: 16 in. H: 12 in.

---



### 8334: OIL ON CANVAS PAINTING OF A LANDSCAPE SCENE

USD 150 - 250

An oil on canvas painting that depicts a beautiful landscape scene, of a small path amongst trees and scrubs. Signed on bottom right to read R. Whitely. L: 12 in. H: 16 in.

---



### 8335: OIL ON CANVAS PAINTING OF STILL LIFE

USD 150 - 250

An oil on canvas painting that depicts ripe fruits on a table. Signed on bottom right to read D. Rossini. L: 16 in. H: 12 in.

---



### 8336: MODERN OIL ON CANVAS PAINTING OF A LANDSCAPE SCENE

USD 150 - 250

A modern oil on canvas painting that depicts a fall landscape scene. Unsigned. L: 16 in. H: 12 in.

---

## PRIVATE COLLECTION OF DR. LIN & OTHER ESTATES



### 8337: FRENCH ENGRAVING OF A BLACK DOG BY JACQUES REBOUR

USD 150 - 250

Framed. A French engraving of a Dalmatian dog. Pencil signed on to read Jacques Rebour; numbered 1/500.

---



### 8338: FRAMED PAINTING OF A TIGER

USD 150 - 250

Signed on bottom right.

---



### 8339: GILTWOOD FRAMED CHINESE PAINTING OF AN EMPRESS

USD 500 - 1,000

Depicts a regal empress dressing in a deep red robe with tied-up hair; sitting with left arm resting on the table while holding a silk handkerchief.

---



### 8341: CHINESE FRAMED PRINT ON PAPER

USD 500 - 700

Depict a scene of horse hockey. Inscription on top right. H: 13 in. L: 17 1/4 in. Part of the collection of Mrs. Daisy Lintilhac

---



### 8342: MARC CHAGALL, RUSSIAN-FRENCH (1887 - 1985)

USD 800 - 1,200

Framed, lithograph. Titled "Le Bouquet du le Peintre." Pencil signed on bottom. Honored for his distinct style and pioneering role among Jewish artists, Marc Chagall painted dream-like subjects rooted in personal history and Eastern European folklore. Chagall's style has been described as a hybrid of Cubism, Fauvism, and Symbolism, and his supernatural subjects are thought to have significantly influenced the Surrealists. LE BOUQUET DU LE PEINTRE

---



### 8343: MARC CHAGALL, RUSSIAN-FRENCH (1887 - 1985)

USD 800 - 1,200

Framed, lithograph. Titled "Nature Morte Brune." Pencil signed on bottom. Honored for his distinct style and pioneering role among Jewish artists, Marc Chagall painted dream-like subjects rooted in personal history and Eastern European folklore. Chagall's style has been described as a hybrid of Cubism, Fauvism, and Symbolism, and his supernatural subjects are thought to have significantly influenced the Surrealists.

---



### 8344: MODERN WATERCOLOR PAINTING ON PAPER OF A RACCOON

USD 100 - 200

Framed. A modern watercolor painting that depicts a raccoon and a tuft. Signed on lower right to read Janet Stewart. With Frame: L: 21 in. H: 17 in. Without Frame: L: 16 in. H: 12 in.

---



## PRIVATE COLLECTION OF DR. LIN & OTHER ESTATES



### 8345: ANDY WARHOL'S PHOTOGRAPH OF GUNS

USD 2,000 - 4,000

Andy Warhol (American, 1928-1987) ,Gun Collection Photograph.Gelatin Silver Print.Medium: PhotographSignature : Andy Warhol, and estate stamp on versoFrame: includedDeath emerged as a distinctive theme in Warhol's work in the 1960s, with his Marilyn Monroe portraits and the 'Death and Disaster' series. His fears about dying were heightened in 1968 when he was shot and critically injured by Valerie Solanas. The gun depicted here is similar to the .22 snub-nosed pistol that she used. At around the same time as he was painting guns Warhol was also doing a series of knife pictures. Indeed, the first idea was to show them together, along with some dollar-sign paintings, at the Leo Castelli Gallery in New York in January 1982.Property from a private California collectionH: 8 in. x W: 10 in. With Frame: H: 17 in. x W: 21 in.



### 8346: WATERCOLOR PAINTING ON PAPER OF A FALL LANDSCAPE

USD 200 - 300

A beautiful watercolor painting on paper that depicts a fall forest. Signed on bottom right to read Wendy Elmquist.With Mounting: L: 18 in. H: 24 1/2 in.Painting Only: L: 13 in. H: 20 in.



### 8347: LEO (LIOR) ROTH, ISRAELI (1914 - 2002)

USD 800 - 1,000

Framed. A watercolor painting of two heads with a cow. Signed on top left.Leo (Lior) Roth (1914 - 2002) was an Israeli painter who was born in 1914. Roth's work was influenced by Cubism and bears much in common with the work of compatriot painter Naftali Bezem. His colorful canvases contain biblical imagery and references to early Israeli pioneer culture.The record sold price in auction is USD \$6,900 for his work "The Shear", which was sold in 2015.With Frame: L: 16 1/2 in. H: 18 in.Without Frame: L: 5 in. H: 7 in.



### 8348: LEO (LIOR) ROTH, ISRAELI (1914 - 2002)

USD 800 - 1,000

Framed. A watercolor painting that depicts a figural scene. Signed on bottom right.Leo (Lior) Roth (1914 - 2002) was an Israeli painter who was born in 1914. Roth's work was influenced by Cubism and bears much in common with the work of compatriot painter Naftali Bezem. His colorful canvases contain biblical imagery and references to early Israeli pioneer culture.The record sold price in auction is USD \$6,900 for his work "The Shear", which was sold in 2015.With Frame: L: 16 1/2 in. H: 18 in.Without Frame: L: 5 in. H: 7 in.



### 8349: LEO (LIOR) ROTH, ISRAELI (1914 - 2002)

USD 800 - 1,000

Framed. A watercolor painting of two people. Signed on top right.Leo (Lior) Roth (1914 - 2002) was an Israeli painter who was born in 1914. Roth's work was influenced by Cubism and bears much in common with the work of compatriot painter Naftali Bezem. His colorful canvases contain biblical imagery and references to early Israeli pioneer culture.The record sold price in auction is USD \$6,900 for his work "The Shear", which was sold in 2015.With Frame: L: 18 in. H: 16 1/2 in.Without Frame: L: 6 1/2 in. H: 5 1/2 in.



### 8350: LEO (LIOR) ROTH, ISRAELI (1914 - 2002)

USD 800 - 1,000

Leo (Lior) Roth (1914 - 2002) was an Israeli painter who was born in 1914. Roth's work was influenced by Cubism and bears much in common with the work of compatriot painter Naftali Bezem. His colorful canvases contain biblical imagery and references to early Israeli pioneer culture.The record sold price in auction is USD \$6,900 for his work "The Shear", which was sold in 2015.



### 8351: LEO (LIOR) ROTH, ISRAELI (1914 - 2002)

USD 800 - 1,000

Leo (Lior) Roth (1914 - 2002) was an Israeli painter who was born in 1914. Roth's work was influenced by Cubism and bears much in common with the work of compatriot painter Naftali Bezem. His colorful canvases contain biblical imagery and references to early Israeli pioneer culture.The record sold price in auction is USD \$6,900 for his work "The Shear", which was sold in 2015.

## PRIVATE COLLECTION OF DR. LIN & OTHER ESTATES



### 8352: WATERCOLOR PAINTING OF A LANDSCAPE WITH COWS

USD 300 - 500

Framed. A watercolor painting of landscape with cows. Signature on the bottom left to read J.F. Grace. H: 13 1/2 in. L: 18 1/2 in.

---



### 8354: PIERRE LAWTON, CANADIAN (1933 - )

USD 500 - 700

Framed, ink on paper drawing that depicts a city street scene. Signature on bottom left to read P. Lawton 20. Pierre Lawton (1933 - ), a French Canadian artist. H: 17 in. L: 13 in.

---



### 8355: OIL ON BOARD PAINTING OF A WINTER LANDSCAPE

USD 200 - 300

Framed. An oil on board painting that depicts a winter landscape, unsigned. H: 10 in. L: 8 in.

---



### 8356: CARVED AND PAINTED WOOD PANEL OF A HUNTING SCENE

USD 300 - 500

Depicts a deer hunting scene. Carved mark on bottom right. H: 12 in. L: 23 3/4 in.

---



### 8357: OIL ON BOARD PAINTING OF A CITY PORT BY CHW

USD 5,000 - 7,000

An oil on board painting that depicts a city port scene. Signature on bottom left to read CHW. H: 14 in. L: 18 in.

---



### 8358: LEO (LIOR) ROTH, ISRAELI (1914 - 2002)

USD 2,000 - 3,000

Framed. A colorful watercolor painting that depicts few people gathering. Signature on top right. Leo (Lior) Roth (1914 - 2002) was an Israeli painter who was born in 1914. Roth's work was influenced by Cubism and bears much in common with the work of compatriot painter Naftali Bezem. His colorful canvases contain biblical imagery and references to early Israeli pioneer culture. The record sold price in auction is USD \$6,900 for his work, "The Shear", which was sold in 2015. H: 5 1/4 in. L: 8 in.

---



### 8359: MARCEL STARY, CANADIAN (1918-1962)

USD 500 - 700

Framed, a watercolor painting of a ranch with tents and canoes. Signature on bottom left to read M. Stary. Marcel Stary (1918 - 1962) was a Canadian artist. He was born in the former Czechoslovakia and studied Art in Prague. Marcel escaped during the Soviet occupation and came to Montreal, Canada in 1948. He traditionally worked in oil, watercolor and acrylics. His subjects included the landscape and life of the Inuit people in the Arctic and Labrador. H: 12 in. L: 16 in.

---

## PRIVATE COLLECTION OF DR. LIN & OTHER ESTATES



**8360: MANLY EDWARD MACDONALD RCA, CANADIAN (1889 - 1971)**

USD 1,000 - 2,000

A beautiful print-work that depicts a man riding a horse carriage to cross a river. Signature on bottom right to read Manly MacDonald. Manly Edward MacDonald was a well-known Canadian painter, printmaker and educator. His primary medium was oil paint; however, he also worked in pastel, watercolor, etching, drypoint, aquatint and mixed mediums. His subjects included portraits, figures, landscapes, winter scenes, cityscapes, village scenes, farm activity, lakes, rivers, boats and genre. His styles were Realism and Plein Air. His favorite painting location was the countryside around the Bay of Quinte on the north shore of Lake Ontario, near where he was born. The record price for this artist in auction is USD \$16,741 for his work, "BRUCE'S MILL, 10 MILES NORTH OF UNIONVILLE", which was sold in 2014. H: 19 in. L: 24 1/2 in.

---



**8361: WILLEM FREDERIK NOORDIJK, DUTCH (1887 - 1970)**

USD 1,500 - 1,800

An oil on canvas painting that depicts animals outside of a farm house. Signature on bottom to read W Noordijk. Willem Frederik Noordijk (1887 - 1970) was a Dutch painter who was known for landscape paintings. The record sold price for this artist in auction is USD \$1,734 for his work, "Skaters by the City Walls of Naarden," which was sold in 2001. H: 16 in. L: 24 in.

---



**8362: WILLEM FREDERIK NOORDIJK, DUTCH (1887 - 1970)**

USD 1,000 - 2,000

An oil on canvas painting that depicts of a winter town. Signature on bottom left to read W. Noordijk. Willem Frederik Noordijk (1887 - 1970) was a Dutch painter who was known for landscape paintings. The record sold price for this artist in auction is USD \$1,734 for his work, "Skaters by the City Walls of Naarden," which was sold in 2001. H: 16 in. L: 24 in.

---



**8363: OIL ON CANVAS PAINTING OF SNOW SKIING SCENE**

USD 300 - 350

Depicts two skiers skiing down a snowy slope. Unsigned. H: 20 in. L: 24 in.

---



**8364: OIL PAINTING OF A BOY AND A GIRL BY CHER HOEVEN**

USD 800 - 1,000

An oil on canvas painting that depicts a boy and a girl. Signature on bottom right to read Cher Hoeven. H: 23 in. L: 19 in.

---



**8365: DUTCH OIL ON CANVAS PAINTING OF A SHEPHERD**

USD 1,000 - 2,000

Depicts a shepherd with a flock of sheep on an open field, near the river by H. Ripthart. H: 19 3/4 in. L: 24 in.

---



**8366: WATERCOLOR PAINTING OF A SHORE SCENE**

USD 300 - 400

Framed. A watercolor painting that depicts waves crashing on shores. Signature on bottom right to read MR. H: 12 1/2 in. L: 21 in.

---

## PRIVATE COLLECTION OF DR. LIN & OTHER ESTATES



**8367: MARCEL STARY, CANADIAN (1918-1962)**

USD 500 - 800

Framed. A watercolor painting that depicts a tranquil scenery of a lake amongst forest. Signature on bottom right to read M. Stary. Marcel Stary (1918 - 1962) was a Canadian artist. He was born in the former Czechoslovakia and studied Art in Prague. Marcel escaped during the Soviet occupation and came to Montreal, Canada in 1948. He traditionally worked in oil, watercolor and acrylics. His subjects included the landscape and life of the Inuit people in the Arctic and Labrador. H: 12 in. L: 16 in.

---



**8371: SANDU LIBERMAN, ROMANIAN (1923 - 1977)**

USD 300 - 400

Framed, a lithograph of two women. Pencil signed on bottom and numbered 245/250. Sandu Liberman (1923 - 1977) was born in Romania and was known for illustration, and portrait paintings. He settled in Israel in 1962 and was commissioned by the Israeli government to draw a portrait of the President of Guinea and hangs in the royal palace in 1965. The record sold price for this artist in auction is USD \$900 for his work, "Dance I," which was sold in 2015.

---



**8372: WATERCOLOR PAINTING OF A MOSQUE COMPLEX**

USD 300 - 500

Framed, titled "Jerusalem of the Towers". A watercolor painting that is mostly in blue and white color, depicts a mosque complex. The complex displays of domed ceilings and spires, men and women in cultural clothing. Pencil signed on bottom right which is illegible. With Frame: L: 26 in. H: 34 in. Without Frame: L: 17 1/2 in. H: 26 in.

---